

# Monthly Market Report - August 2024



CALIFORNIA REAL ESTATE BROKERS, INC.

## MetroList All Areas

Aug 2024 vs Jul 2024

### New Listing

4724 4489 5% ↑

### Pended

3267 3242 1% ↑

### Sold

3095 3181 -3% ↓

### Avg DOM

31 29 7% ↑

### Month of Inventory

2.3 2.2 5% ↑

## New Listing By County

Aug 2024 vs Jul 2024

|             |      |      |      |   |
|-------------|------|------|------|---|
| Amador      | 90   | 94   | -4%  | ↓ |
| Butte       | 47   | 48   | -2%  | ↓ |
| Colusa      | 22   | 12   | 83%  | ↑ |
| El Dorado   | 310  | 305  | 2%   | ↑ |
| Merced      | 160  | 160  | 0%   |   |
| Nevada      | 200  | 157  | 27%  | ↑ |
| Placer      | 634  | 618  | 3%   | ↑ |
| Sacramento  | 1657 | 1556 | 6%   | ↑ |
| San Joaquin | 786  | 685  | 15%  | ↑ |
| Stanislaus  | 459  | 469  | -2%  | ↓ |
| Sutter      | 71   | 80   | -11% | ↓ |
| Yolo        | 167  | 179  | -7%  | ↓ |
| Yuba        | 121  | 126  | -4%  | ↓ |

## Pended By County

Aug 2024 vs Jul 2024

|             |      |      |      |   |
|-------------|------|------|------|---|
| Amador      | 62   | 51   | 22%  | ↑ |
| Butte       | 22   | 15   | 47%  | ↑ |
| Colusa      | 13   | 6    | 117% | ↑ |
| El Dorado   | 192  | 202  | -5%  | ↓ |
| Merced      | 116  | 115  | 1%   | ↑ |
| Nevada      | 114  | 112  | 2%   | ↑ |
| Placer      | 451  | 464  | -3%  | ↓ |
| Sacramento  | 1182 | 1152 | 3%   | ↑ |
| San Joaquin | 515  | 494  | 4%   | ↑ |
| Stanislaus  | 337  | 353  | -5%  | ↓ |
| Sutter      | 59   | 44   | 34%  | ↑ |
| Yolo        | 131  | 128  | 2%   | ↑ |
| Yuba        | 73   | 106  | -31% | ↓ |

## Sold By County

Aug 2024 vs Jul 2024

|             |      |      |      |   |
|-------------|------|------|------|---|
| Amador      | 54   | 48   | 12%  | ↑ |
| Butte       | 17   | 15   | 13%  | ↑ |
| Colusa      | 11   | 7    | 57%  | ↑ |
| El Dorado   | 189  | 190  | -1%  | ↓ |
| Merced      | 121  | 102  | 19%  | ↑ |
| Nevada      | 107  | 134  | -20% | ↓ |
| Placer      | 460  | 477  | -4%  | ↓ |
| Sacramento  | 1075 | 1141 | -6%  | ↓ |
| San Joaquin | 492  | 469  | 5%   | ↑ |
| Stanislaus  | 300  | 353  | -15% | ↓ |
| Sutter      | 51   | 39   | 31%  | ↑ |
| Yolo        | 132  | 121  | 9%   | ↑ |
| Yuba        | 86   | 85   | 1%   | ↑ |

Data provided by **MetroList**  
THE TRUE SOURCE

Powered by **TrendGraphix**  
YOUR HOME FOR REAL ESTATE DATA

\*Data represents Residential Property class only.

\*Pended represents the number of properties that went into contract during the course of a calendar month.

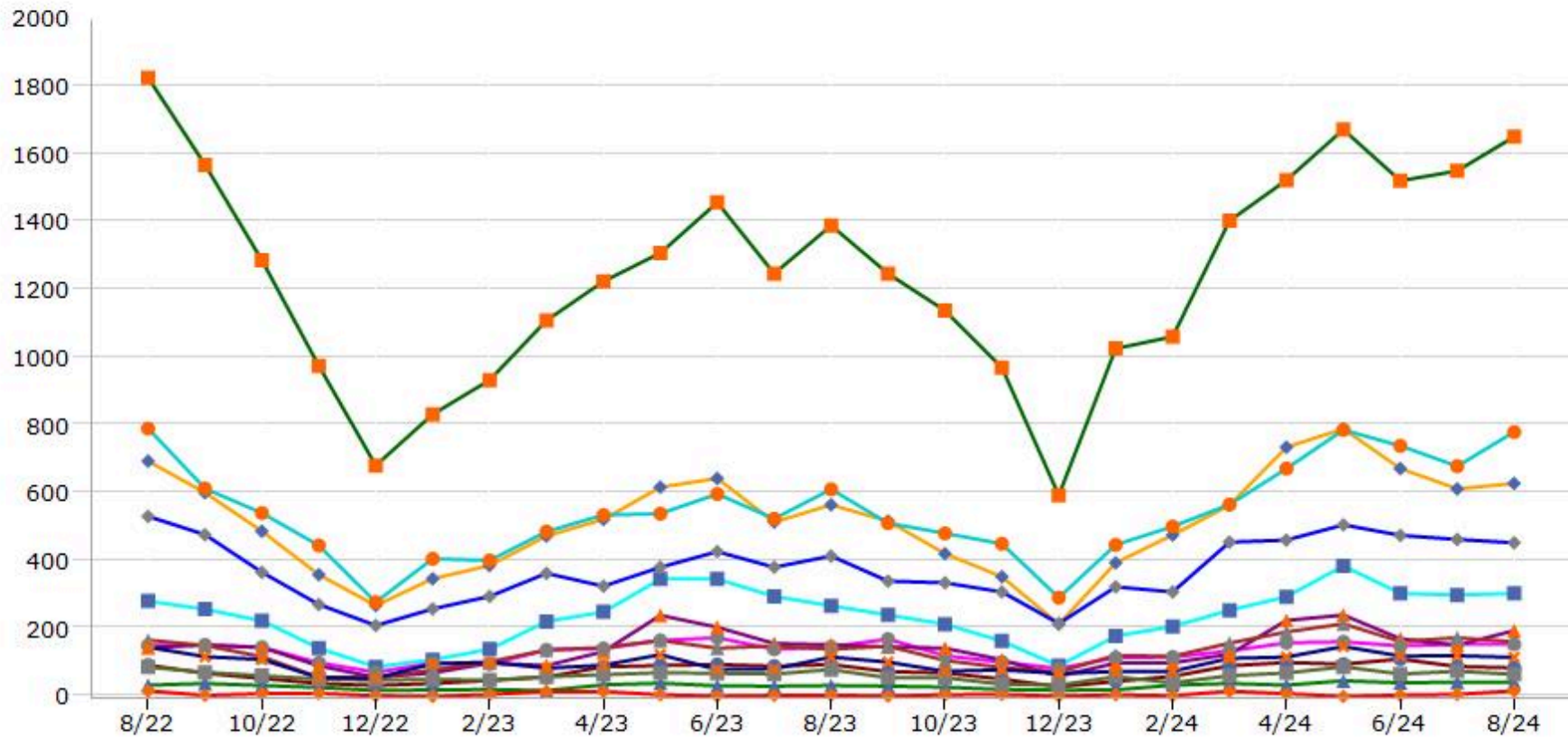
\*Month of Inventory is calculated by dividing the number of homes that went into contract in a given calendar month into the number of homes that were active at the end of a given calendar month.

# Trending Report: Aug 2022 - Aug 2024



CALIFORNIA REAL ESTATE BROKERS, INC.

## New Listing



- Amador
- Colusa
- Merced
- Placer
- Sacramento
- San Joaquin
- Stanislaus
- Sutter
- Yolo
- Yuba
- Butte
- El Dorado
- Nevada

Data provided by **MetroList**  
THE TRUE SOURCE

Powered by **TrendGraphix**  
YOUR HOME FOR REAL ESTATE DATA

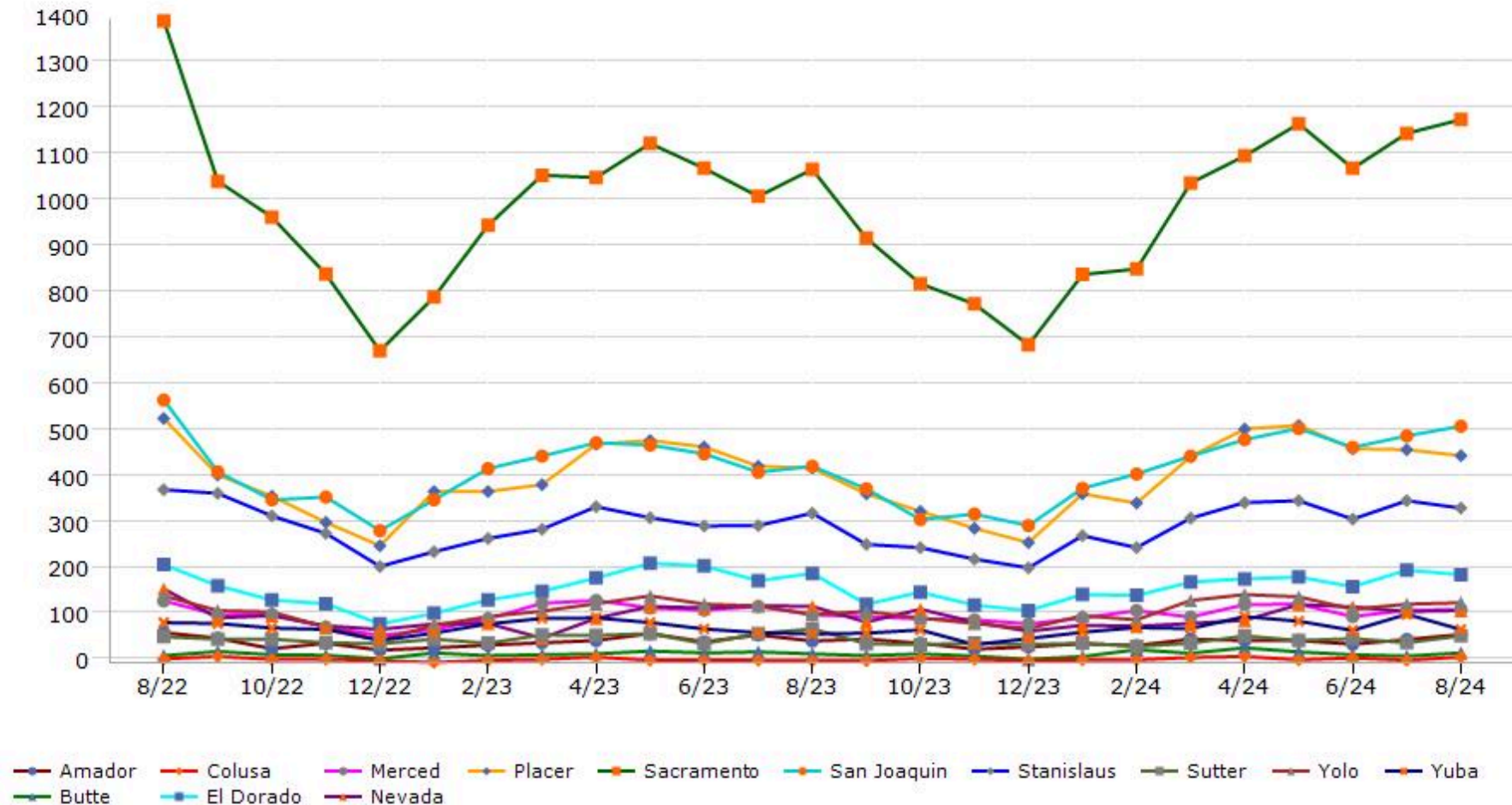
\*Data represents Residential Property class only.

# Trending Report: Aug 2022 - Aug 2024



CALIFORNIA REAL ESTATE BROKERS, INC.

## Pended



Data provided by **MetroList**<sup>®</sup>  
THE TRUE SOURCE

Powered by **TrendGraphix**  
YOUR HOME FOR REAL ESTATE DATA

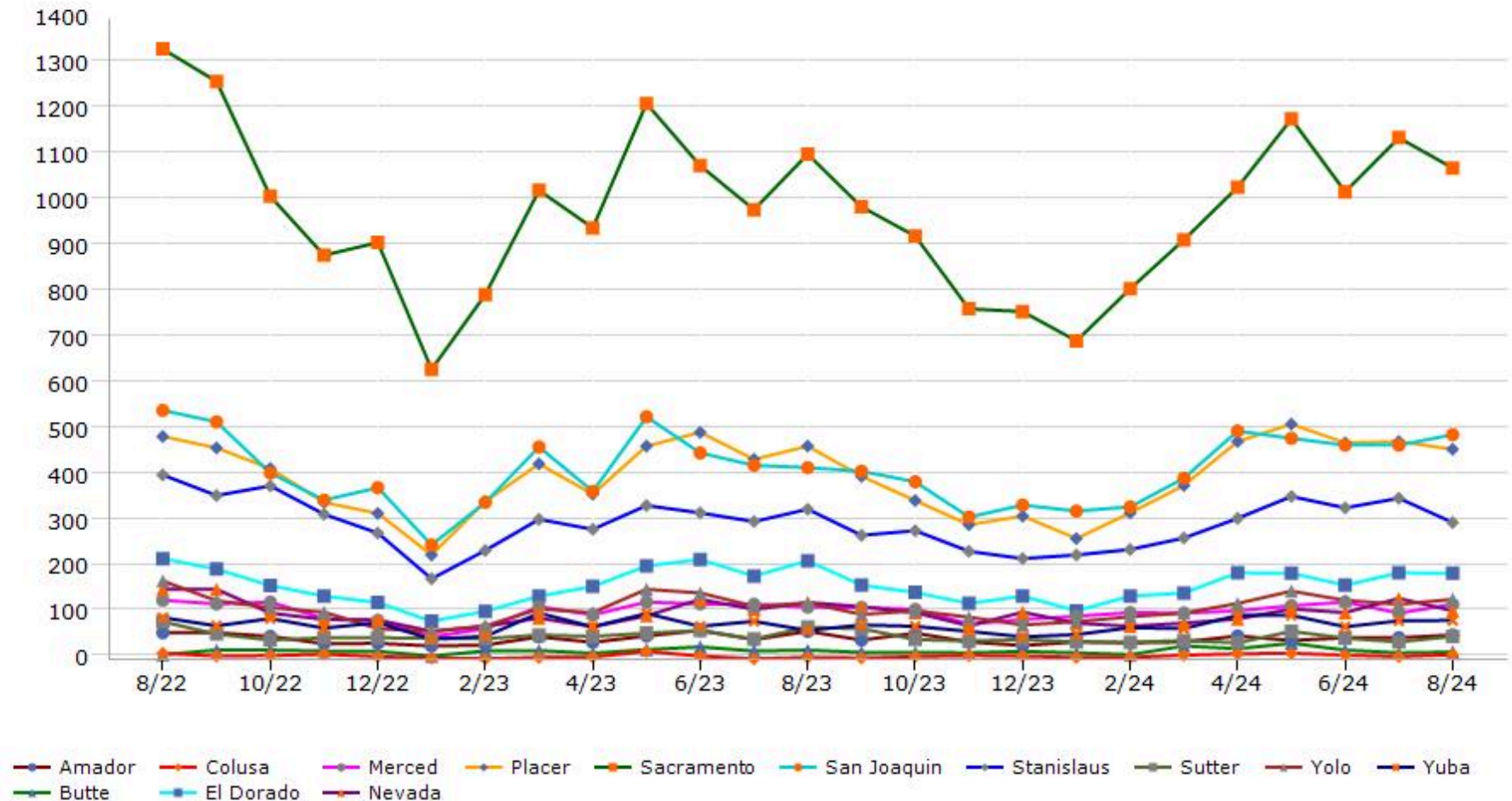
\*Data represents Residential Property class only.

\*Pended represents the number of properties that went into contract during the course of a calendar month.

# Trending Report: Aug 2022 - Aug 2024



## Sold



Data provided by **MetroList**  
THE TRUE SOURCE

Powered by **TrendGraphix**  
YOUR HOME FOR REAL ESTATE DATA

\*Data represents Residential Property class only.

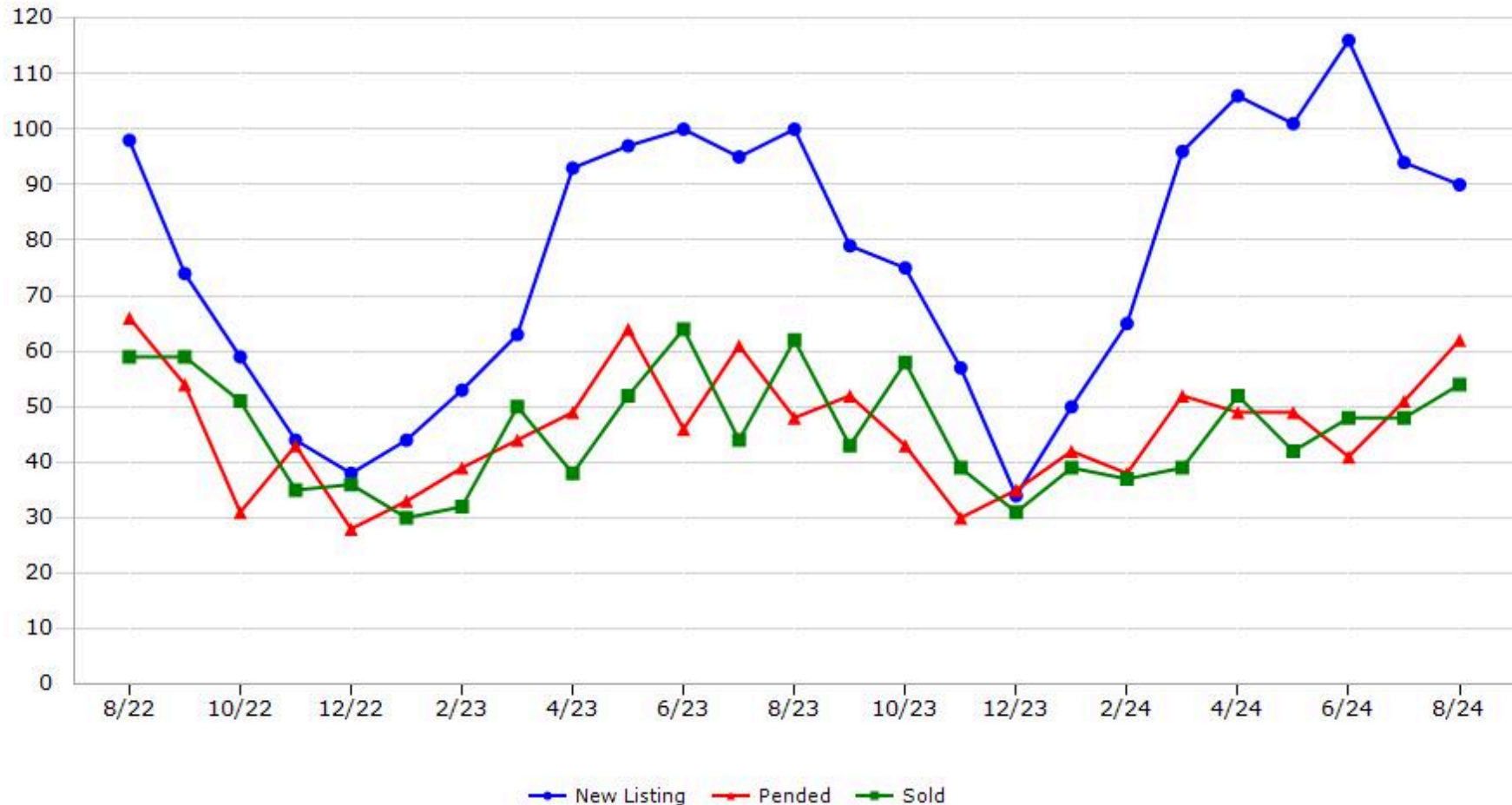


# Trending Report: Aug 2022 - Aug 2024



CALIFORNIA REAL ESTATE BROKERS, INC.

## Amador County



Data provided by **MetroList**® THE TRUE SOURCE Powered by **TrendGraphix** YOUR HOME FOR REAL ESTATE DATA

\*Data represents Residential Property class only.

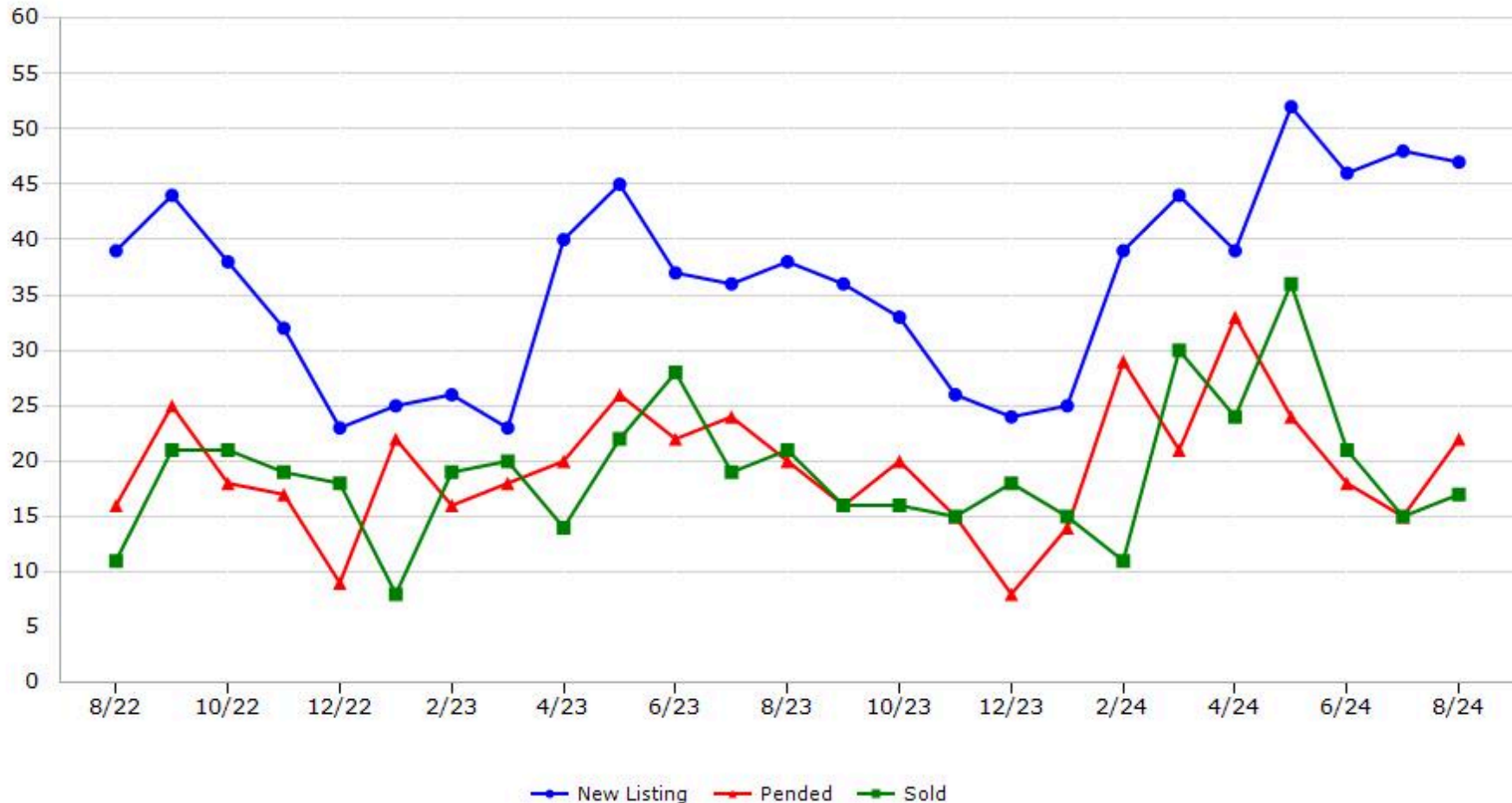
\*Pended represents the number of properties that went into contract during the course of a calendar month.

# Trending Report: Aug 2022 - Aug 2024



CALIFORNIA REAL ESTATE BROKERS, INC.

## Butte County



Data provided by **MetroList**® THE TRUE SOURCE Powered by **TrendGraphix** YOUR HOME FOR REAL ESTATE DATA

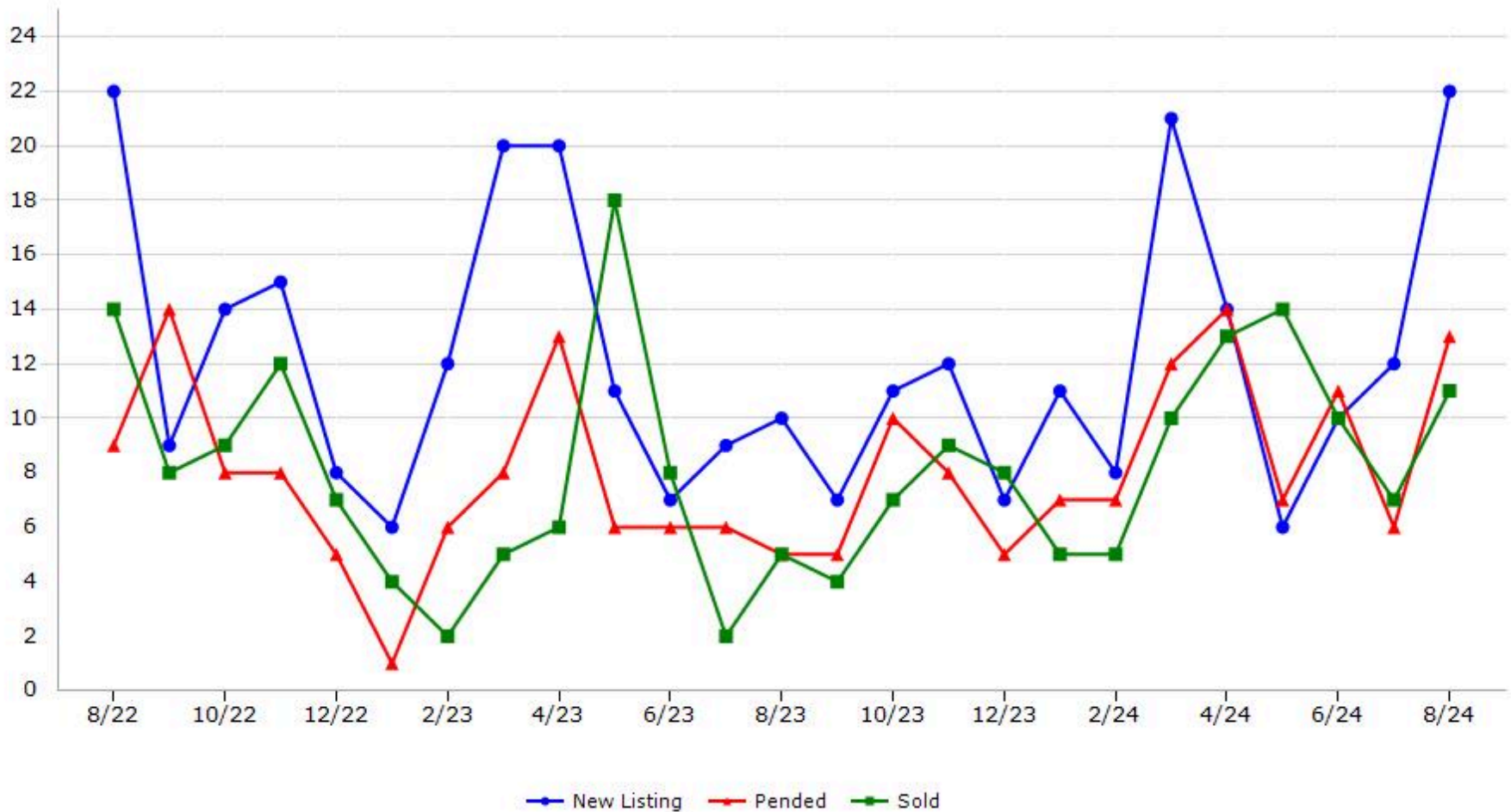
\*Data represents Residential Property class only.

\*Pended represents the number of properties that went into contract during the course of a calendar month.

# Trending Report: Aug 2022 - Aug 2024



## Colusa County



Data provided by **MetroList**® THE TRUE SOURCE | Powered by **TrendGraphix** YOUR HOME FOR REAL ESTATE DATA

\*Data represents Residential Property class only.

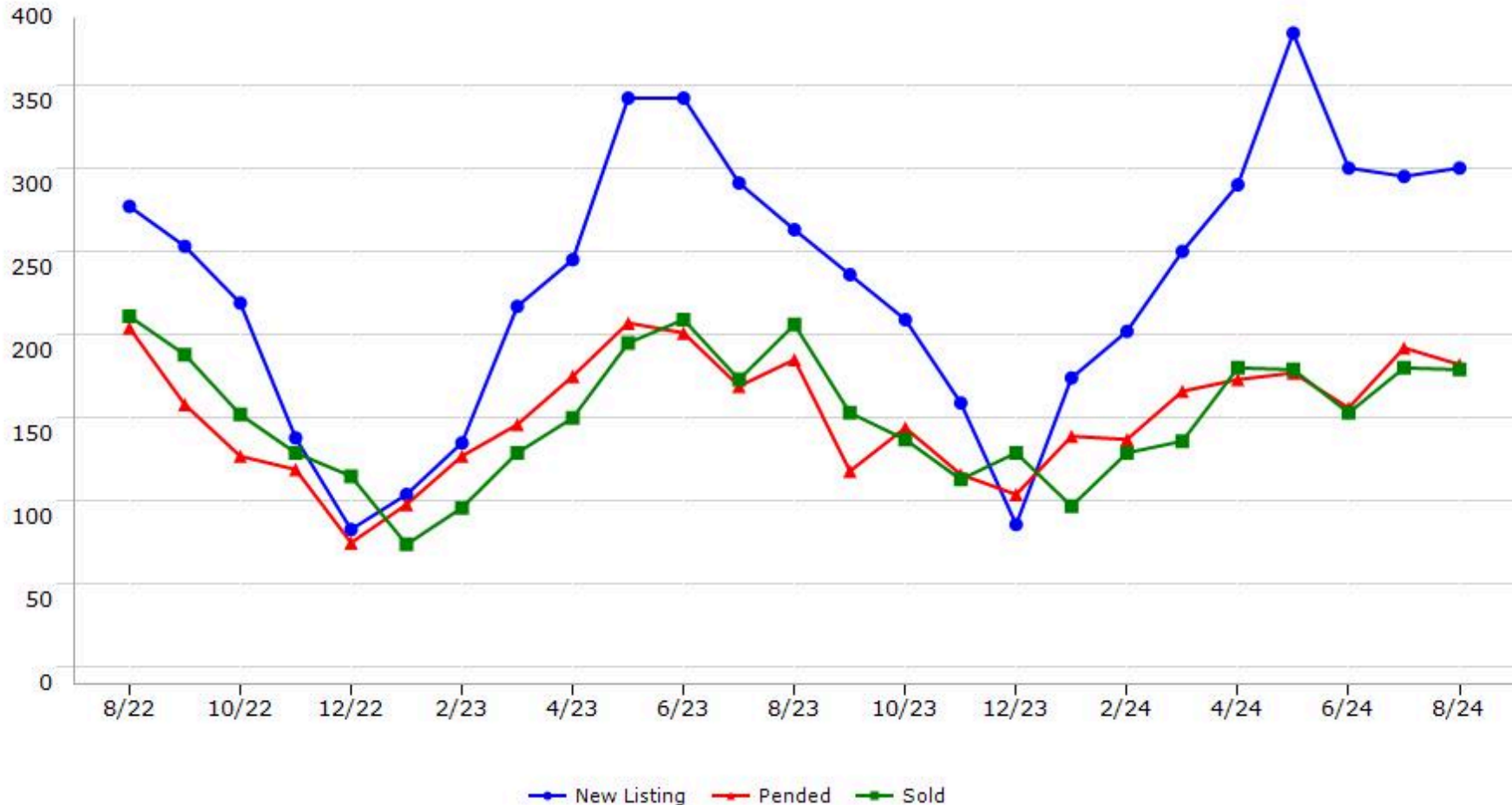
\*Pended represents the number of properties that went into contract during the course of a calendar month.

# Trending Report: Aug 2022 - Aug 2024



CALIFORNIA REAL ESTATE BROKERS, INC.

## El Dorado County



Data provided by **MetroList**® THE TRUE SOURCE Powered by **TrendGraphix** YOUR HOME FOR REAL ESTATE DATA

\*Data represents Residential Property class only.

\*Pended represents the number of properties that went into contract during the course of a calendar month.

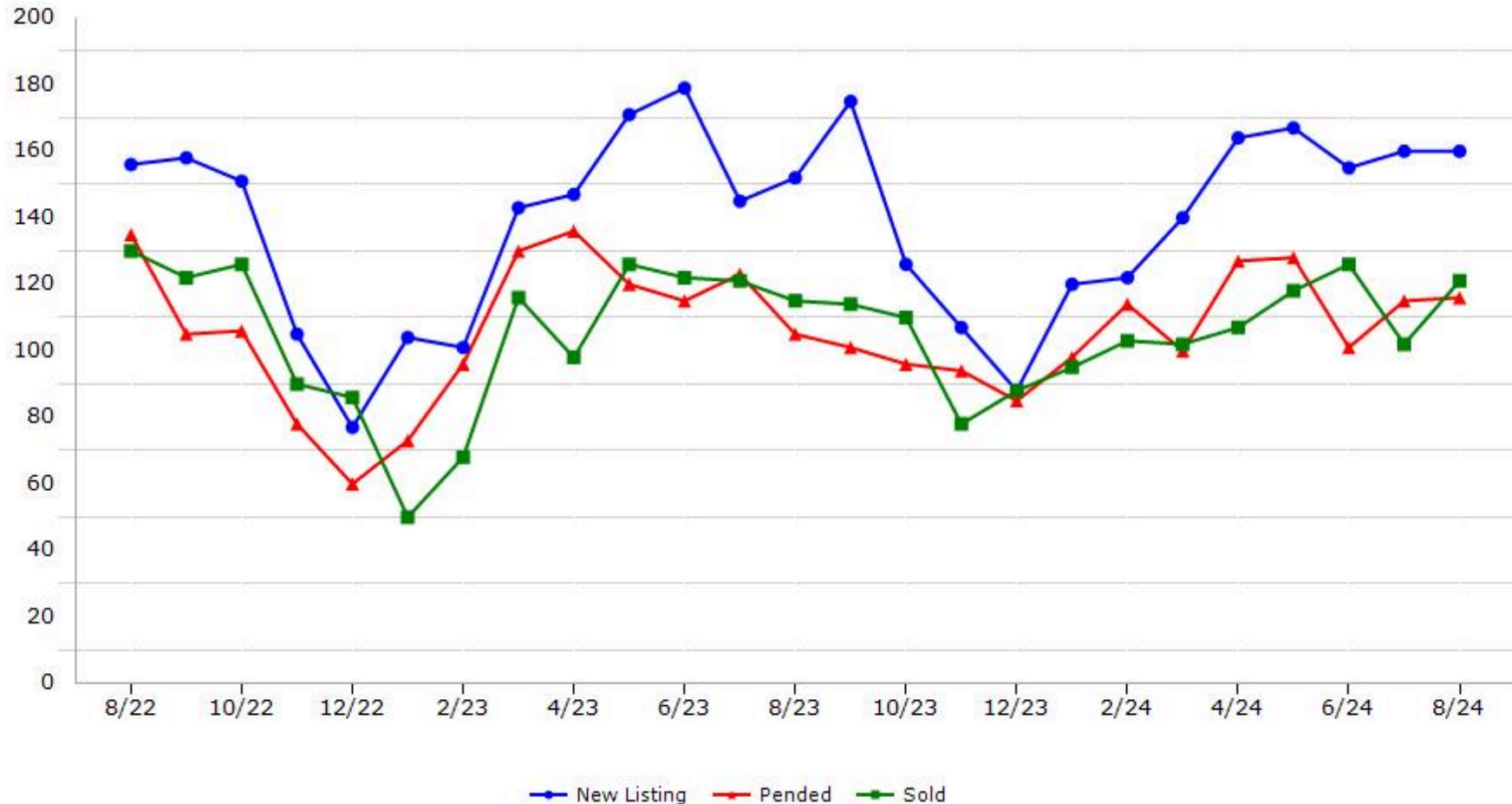


# Trending Report: Aug 2022 - Aug 2024



CALIFORNIA REAL ESTATE BROKERS, INC.

## Merced County



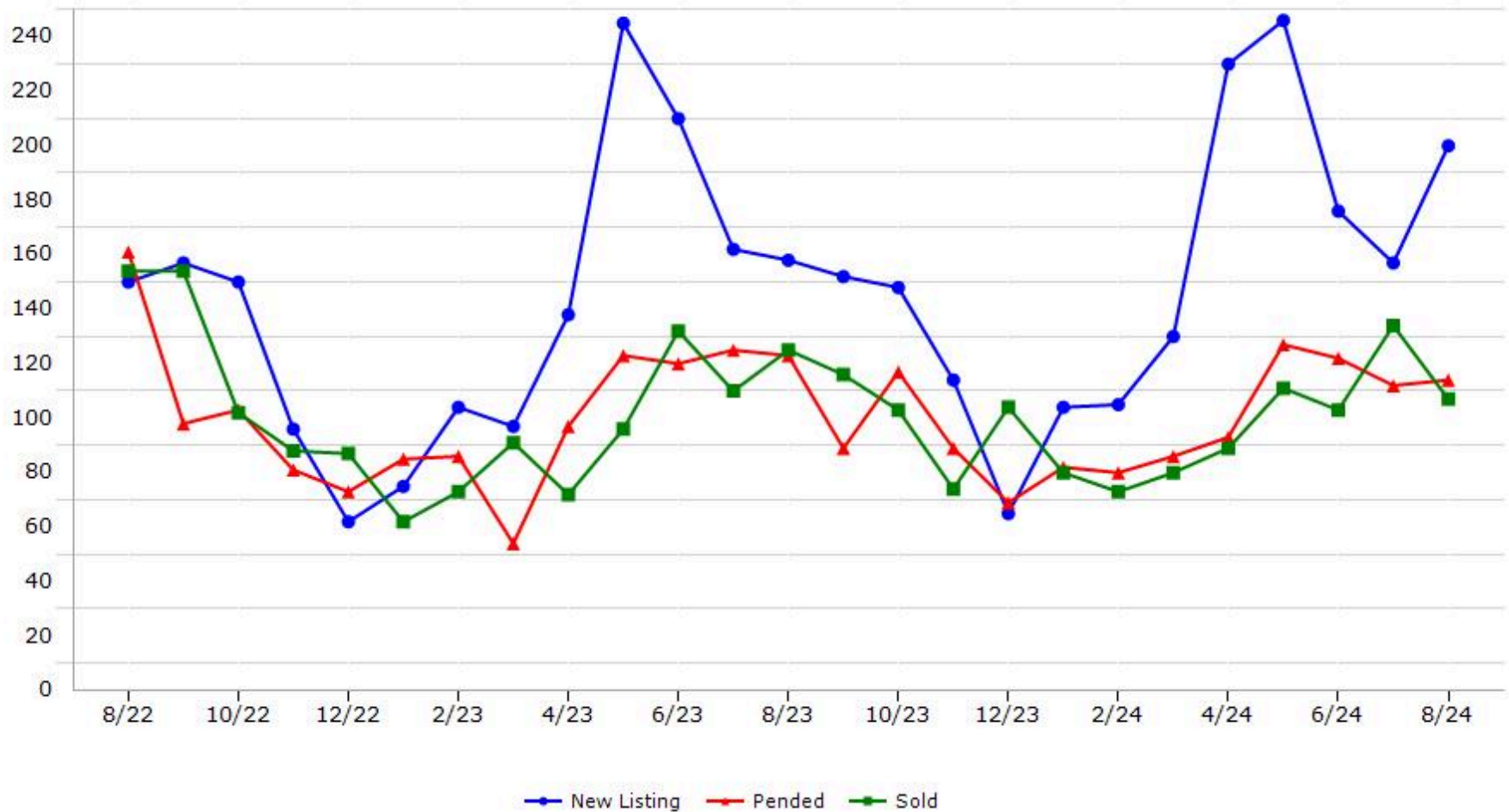
Data provided by **MetroList**® THE TRUE SOURCE Powered by **TrendGraphix** YOUR HOME FOR REAL ESTATE DATA

\*Data represents Residential Property class only.  
\*Pended represents the number of properties that went into contract during the course of a calendar month.

# Trending Report: Aug 2022 - Aug 2024



## Nevada County



Data provided by **MetroList**® THE TRUE SOURCE Powered by **TrendGraphix** YOUR HOME FOR REAL ESTATE DATA

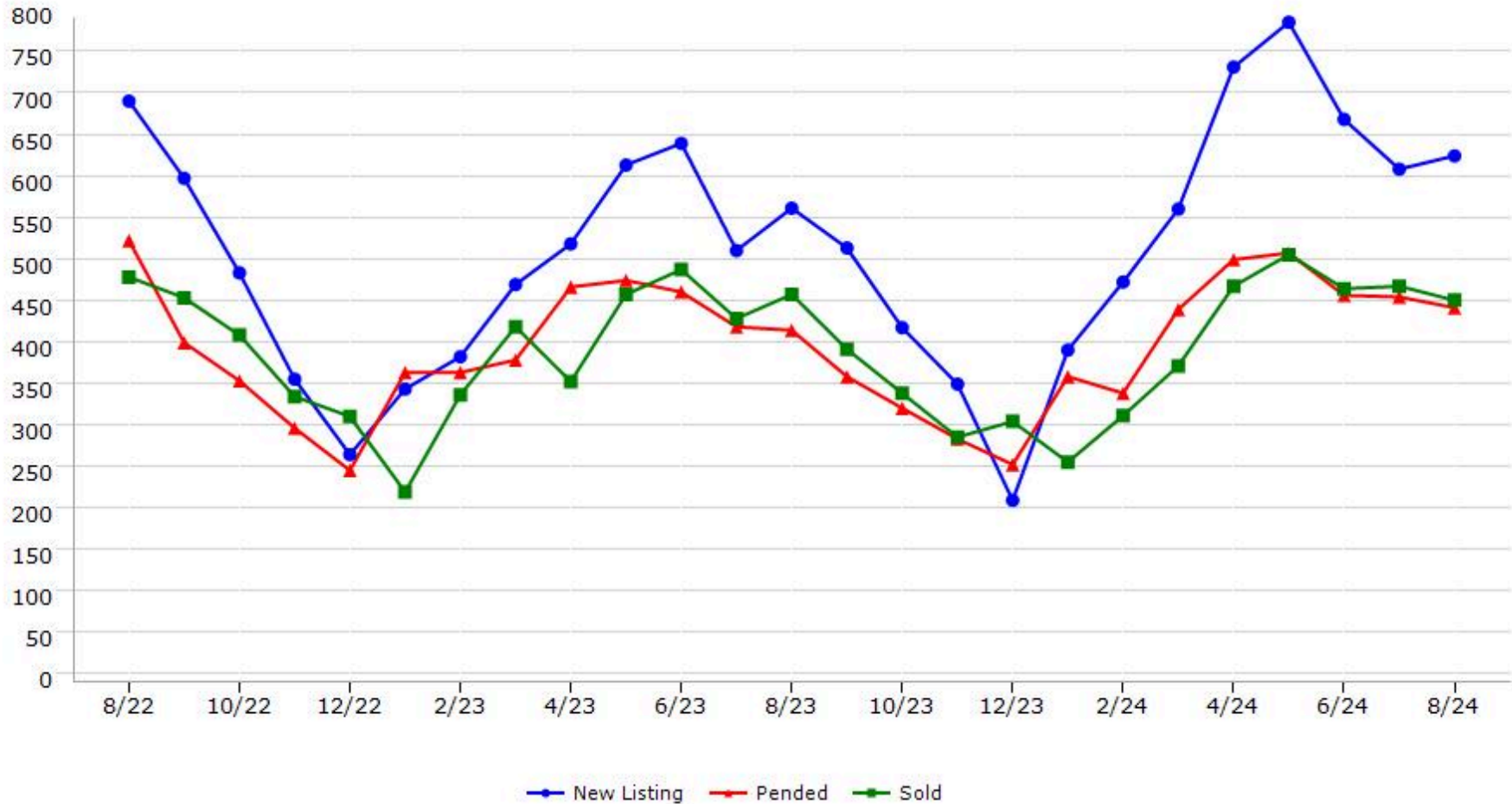
\*Data represents Residential Property class only.

\*Pended represents the number of properties that went into contract during the course of a calendar month.

# Trending Report: Aug 2022 - Aug 2024



## Placer County



Data provided by **MetroList**® THE TRUE SOURCE | Powered by **TrendGraphix** YOUR HOME FOR REAL ESTATE DATA

\*Data represents Residential Property class only.

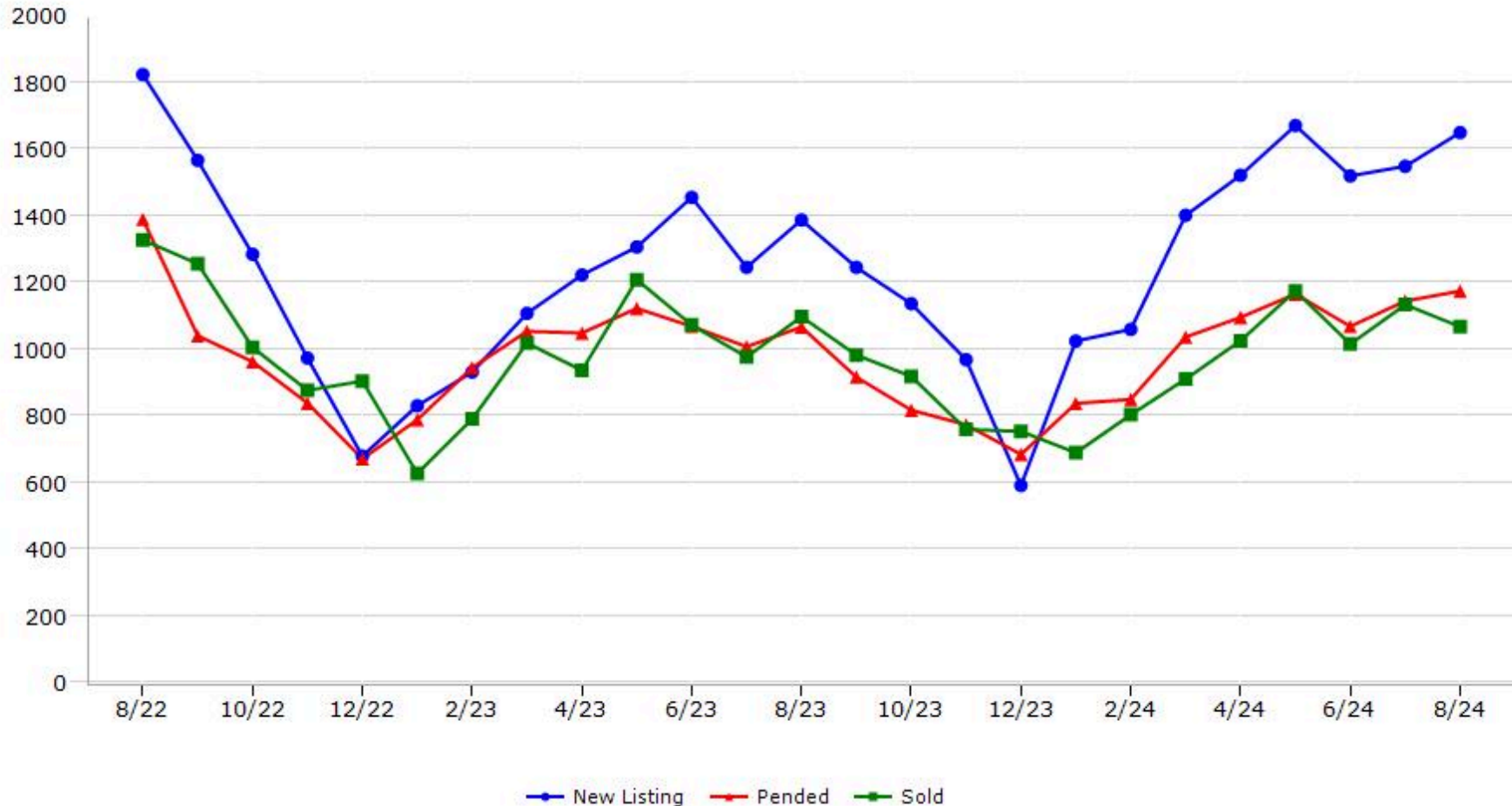
\*Pended represents the number of properties that went into contract during the course of a calendar month.

# Trending Report: Aug 2022 - Aug 2024



CALIFORNIA REAL ESTATE BROKERS, INC.

## Sacramento County



Data provided by **MetroList**® THE TRUE SOURCE Powered by **TrendGraphix** YOUR HOME FOR REAL ESTATE DATA

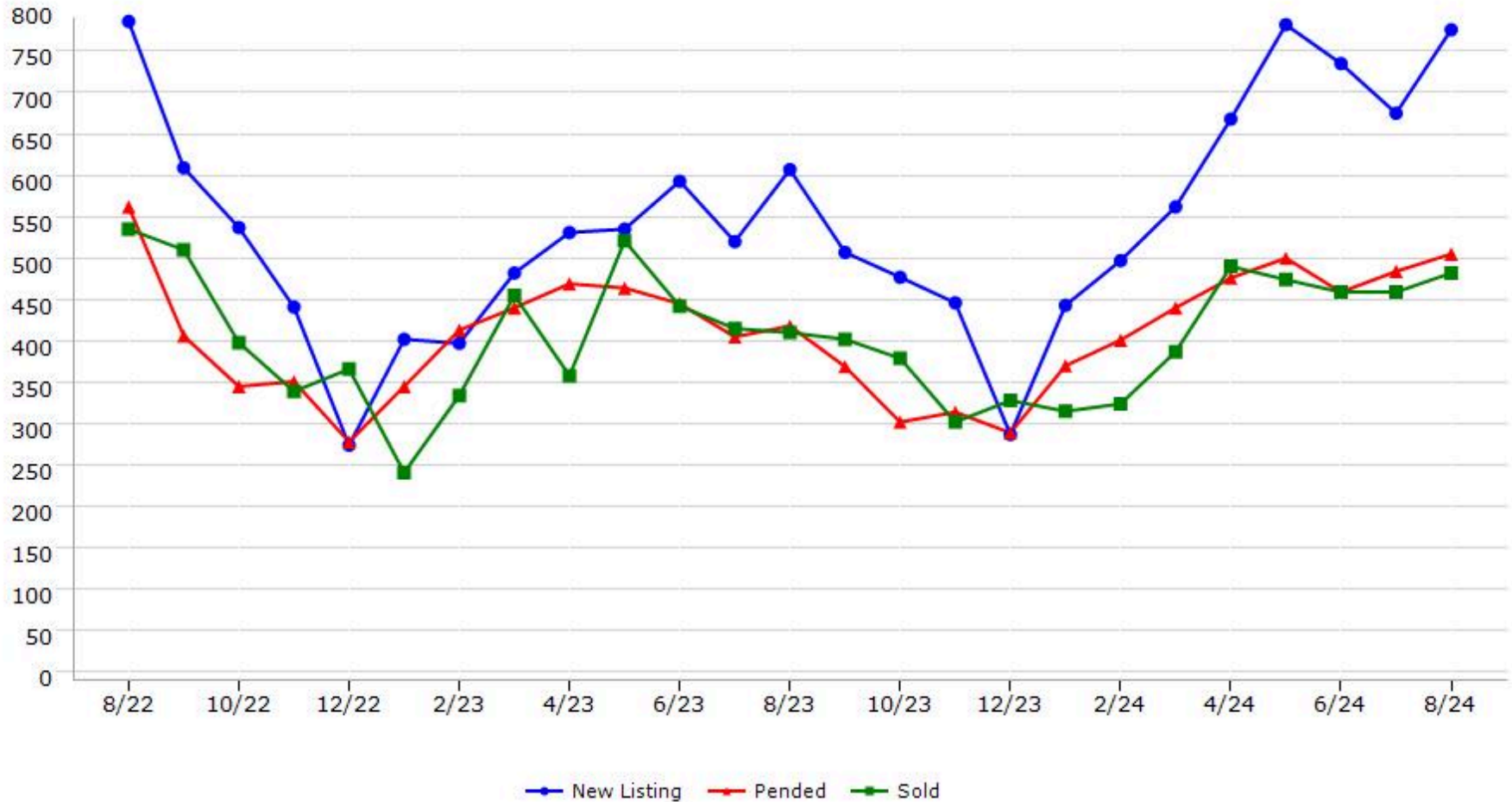
\*Data represents Residential Property class only.

\*Pended represents the number of properties that went into contract during the course of a calendar month.

# Trending Report: Aug 2022 - Aug 2024



## San Joaquin County



Data provided by **MetroList**® THE TRUE SOURCE Powered by **TrendGraphix** YOUR HOME FOR REAL ESTATE DATA

\*Data represents Residential Property class only.

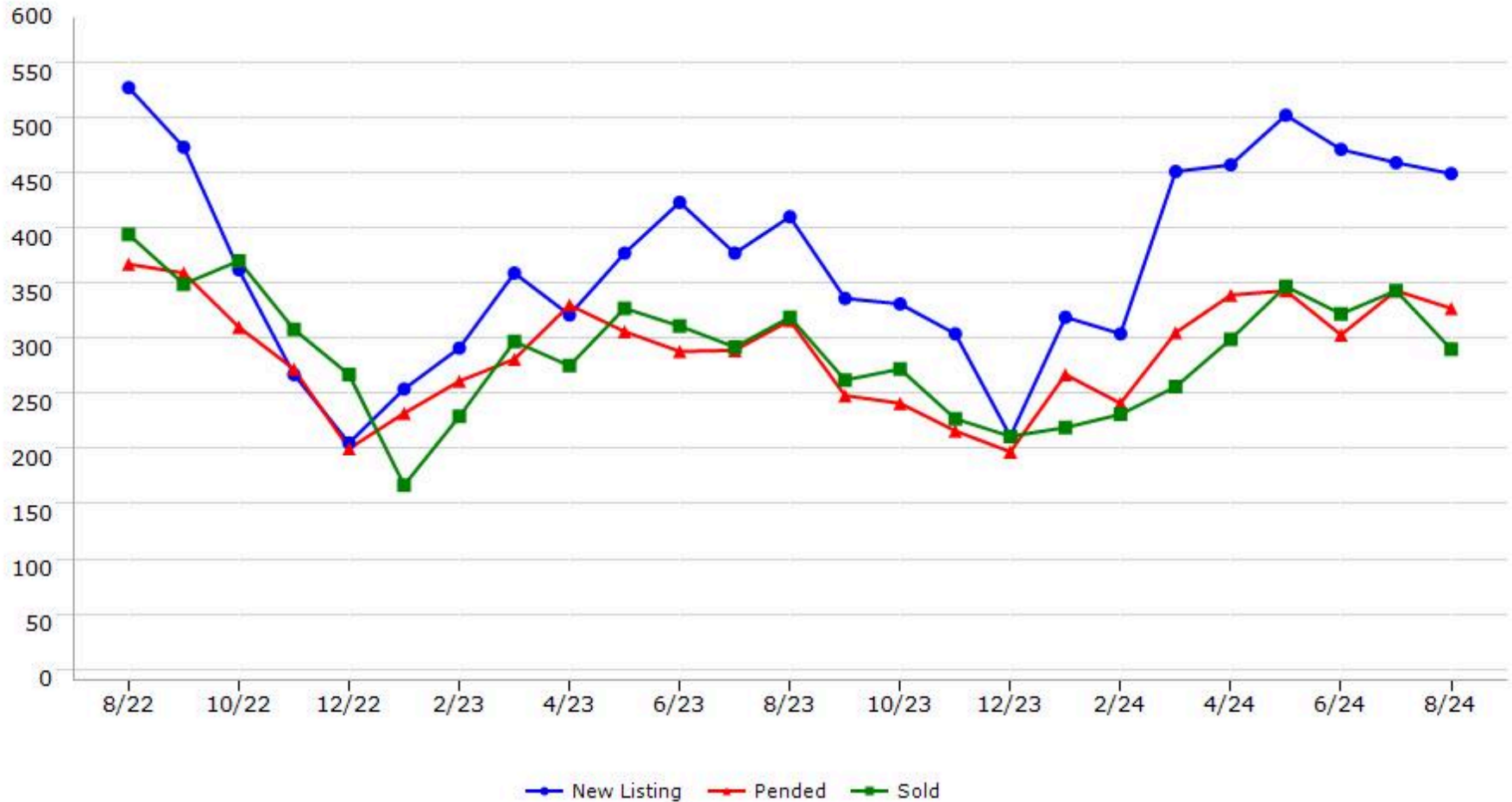
\*Pended represents the number of properties that went into contract during the course of a calendar month.



# Trending Report: Aug 2022 - Aug 2024



## Stanislaus County



Data provided by **MetroList**® THE TRUE SOURCE | Powered by **TrendGraphix** YOUR HOME FOR REAL ESTATE DATA

\*Data represents Residential Property class only.

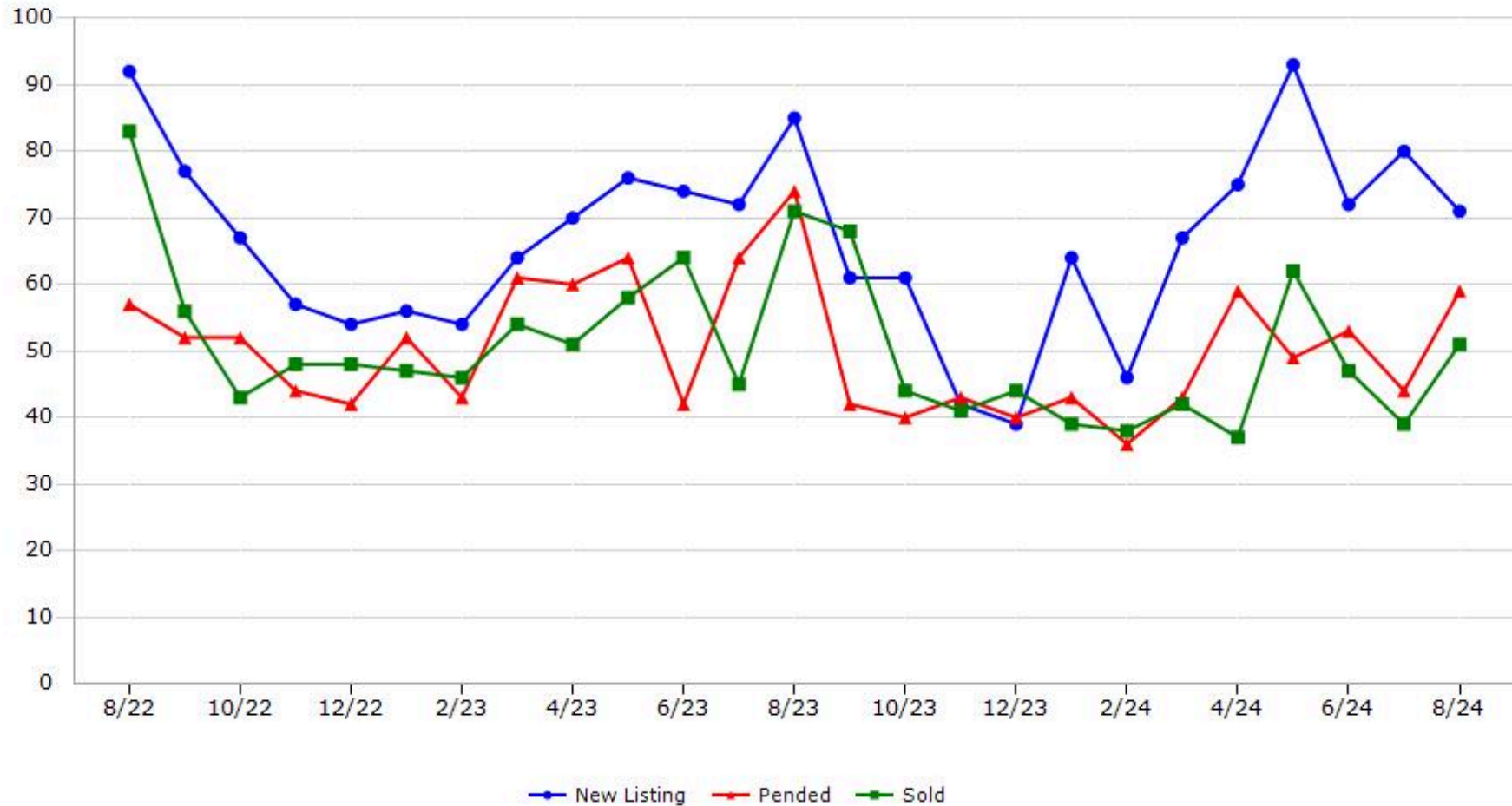
\*Pended represents the number of properties that went into contract during the course of a calendar month.

# Trending Report: Aug 2022 - Aug 2024



CALIFORNIA REAL ESTATE BROKERS, INC.

## Sutter County



Data provided by **MetroList**® THE TRUE SOURCE | Powered by **TrendGraphix** YOUR HOME FOR REAL ESTATE DATA

\*Data represents Residential Property class only.

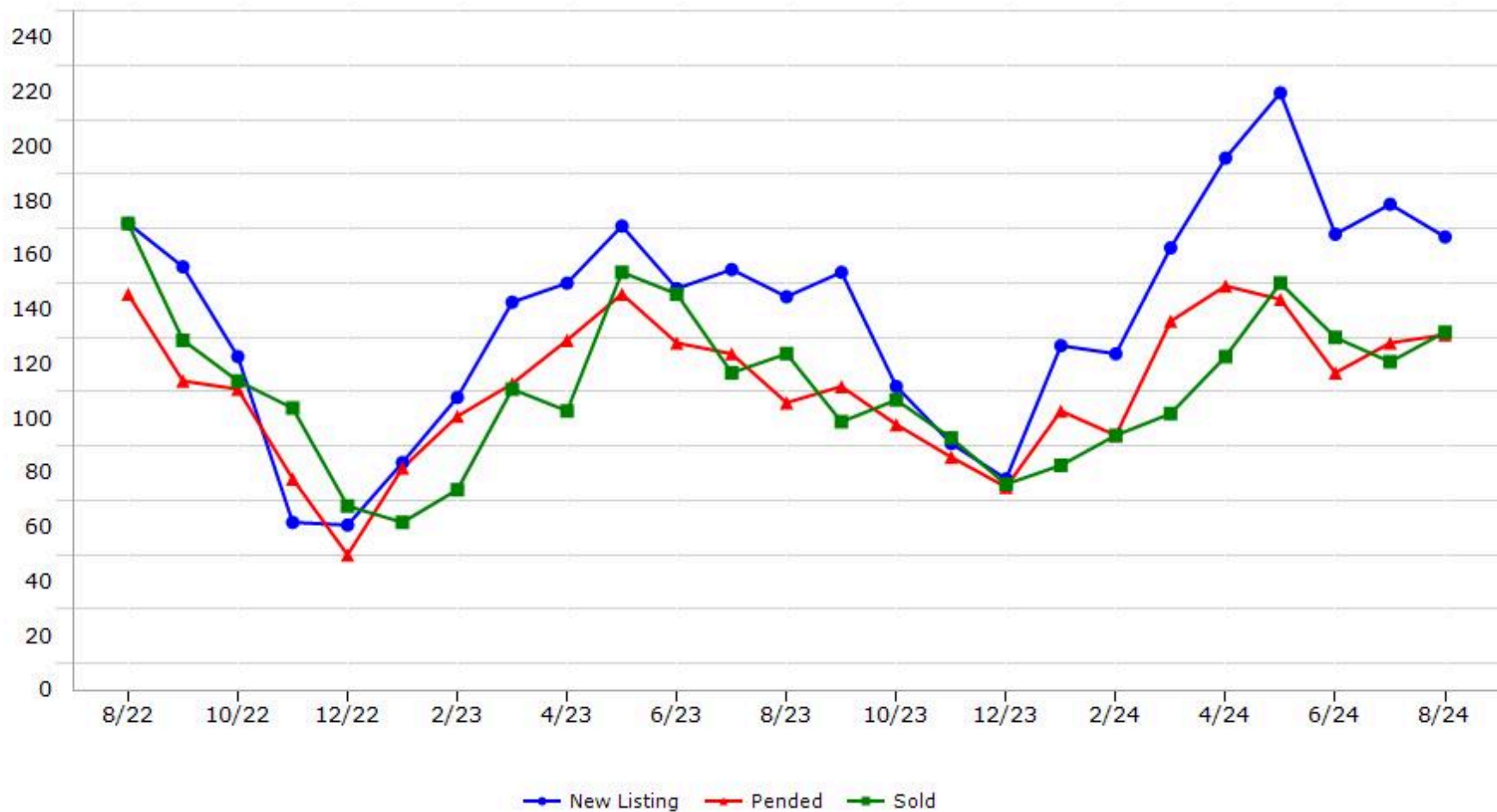
\*Pended represents the number of properties that went into contract during the course of a calendar month.

# Trending Report: Aug 2022 - Aug 2024



CALIFORNIA REAL ESTATE BROKERS, INC.

## Yolo County



Data provided by **MetroList** THE TRUE SOURCE Powered by **TrendGraphix** YOUR HOME FOR REAL ESTATE DATA

\*Data represents Residential Property class only.

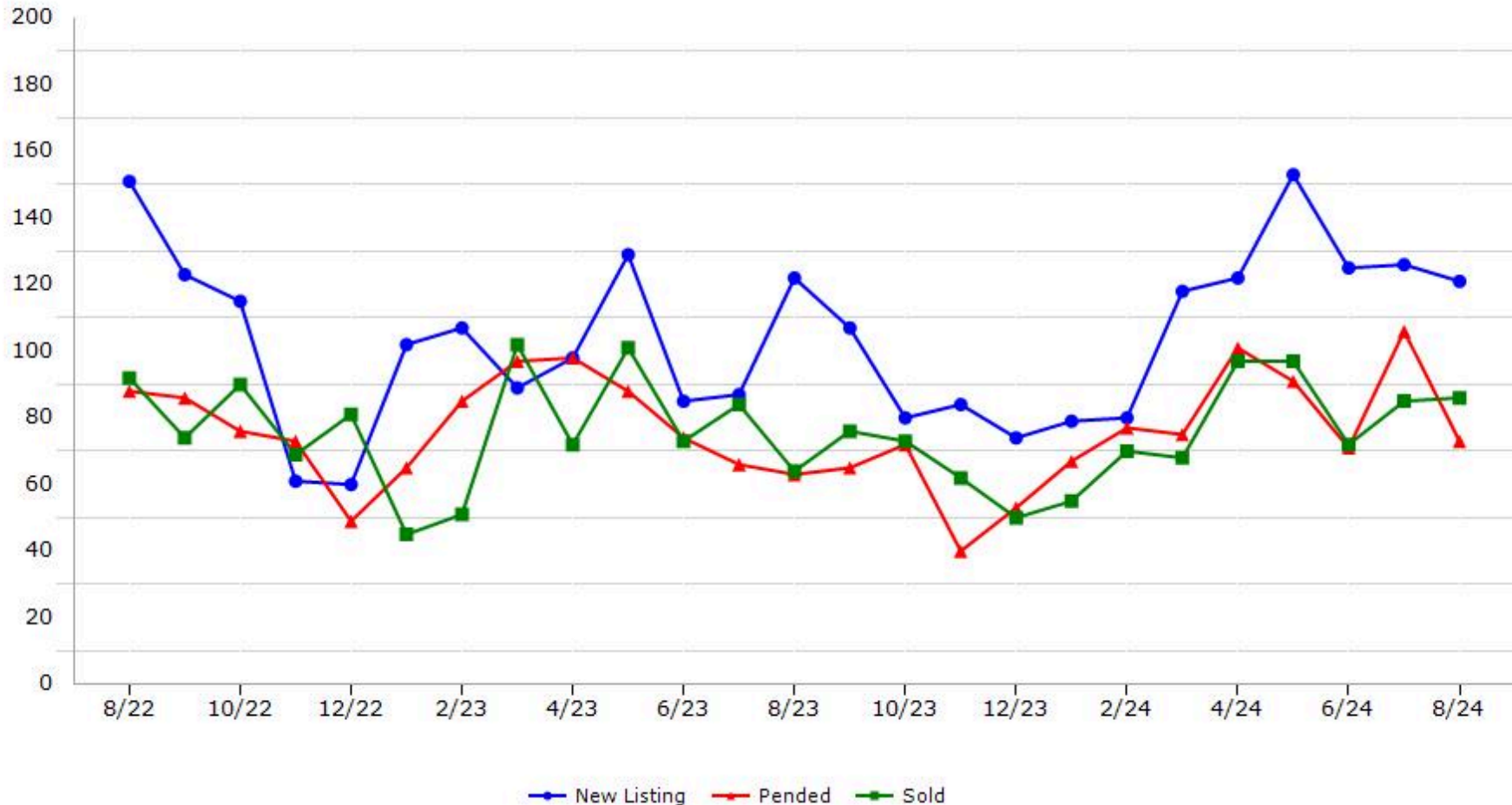
\*Pended represents the number of properties that went into contract during the course of a calendar month.

# Trending Report: Aug 2022 - Aug 2024



CALIFORNIA REAL ESTATE BROKERS, INC.

## Yuba County



Data provided by **MetroList** THE TRUE SOURCE Powered by **TrendGraphix** YOUR HOME FOR REAL ESTATE DATA

\*Data represents Residential Property class only.  
\*Pended represents the number of properties that went into contract during the course of a calendar month.