

# Monthly Market Report - July 2024



CALIFORNIA REAL ESTATE BROKERS, INC.

## MetroList All Areas

Jul 2024 vs Jun 2024

### New Listing

4481 4608 -3% ↓

### Pended

3437 3053 13% ↑

### Sold

3074 3000 2% ↑

### Avg DOM

29 27 7% ↑

### Month of Inventory

2 2.2 -9% ↓

## New Listing By County

Jul 2024 vs Jun 2024

Amador	94	116	-19%	↓
Butte	46	46	0%	
Colusa	12	10	20%	↑
El Dorado	305	310	-2%	↓
Merced	159	154	3%	↑
Nevada	157	176	-11%	↓
Placer	618	678	-9%	↓
Sacramento	1554	1527	2%	↑
San Joaquin	684	745	-8%	↓
Stanislaus	468	481	-3%	↓
Sutter	80	72	11%	↑
Yolo	178	168	6%	↑
Yuba	126	125	1%	↑

## Pended By County

Jul 2024 vs Jun 2024

Amador	55	41	34%	↑
Butte	18	17	6%	↑
Colusa	7	11	-36%	↓
El Dorado	210	167	26%	↑
Merced	121	104	16%	↑
Nevada	119	123	-3%	↓
Placer	484	468	3%	↑
Sacramento	1213	1080	12%	↑
San Joaquin	531	477	11%	↑
Stanislaus	377	324	16%	↑
Sutter	48	55	-13%	↓
Yolo	137	118	16%	↑
Yuba	117	68	72%	↑

## Sold By County

Jul 2024 vs Jun 2024

Amador	47	48	-2%	↓
Butte	14	19	-26%	↓
Colusa	7	10	-30%	↓
El Dorado	181	162	12%	↑
Merced	100	125	-20%	↓
Nevada	129	103	25%	↑
Placer	465	473	-2%	↓
Sacramento	1108	1015	9%	↑
San Joaquin	443	466	-5%	↓
Stanislaus	343	331	4%	↑
Sutter	38	47	-19%	↓
Yolo	118	130	-9%	↓
Yuba	81	71	14%	↑

Data provided by **MetroList**  
THE TRUE SOURCE

Powered by **TrendGraphix**  
YOUR HOME FOR REAL ESTATE DATA

\*Data represents Residential Property class only.

\*Pended represents the number of properties that went into contract during the course of a calendar month.

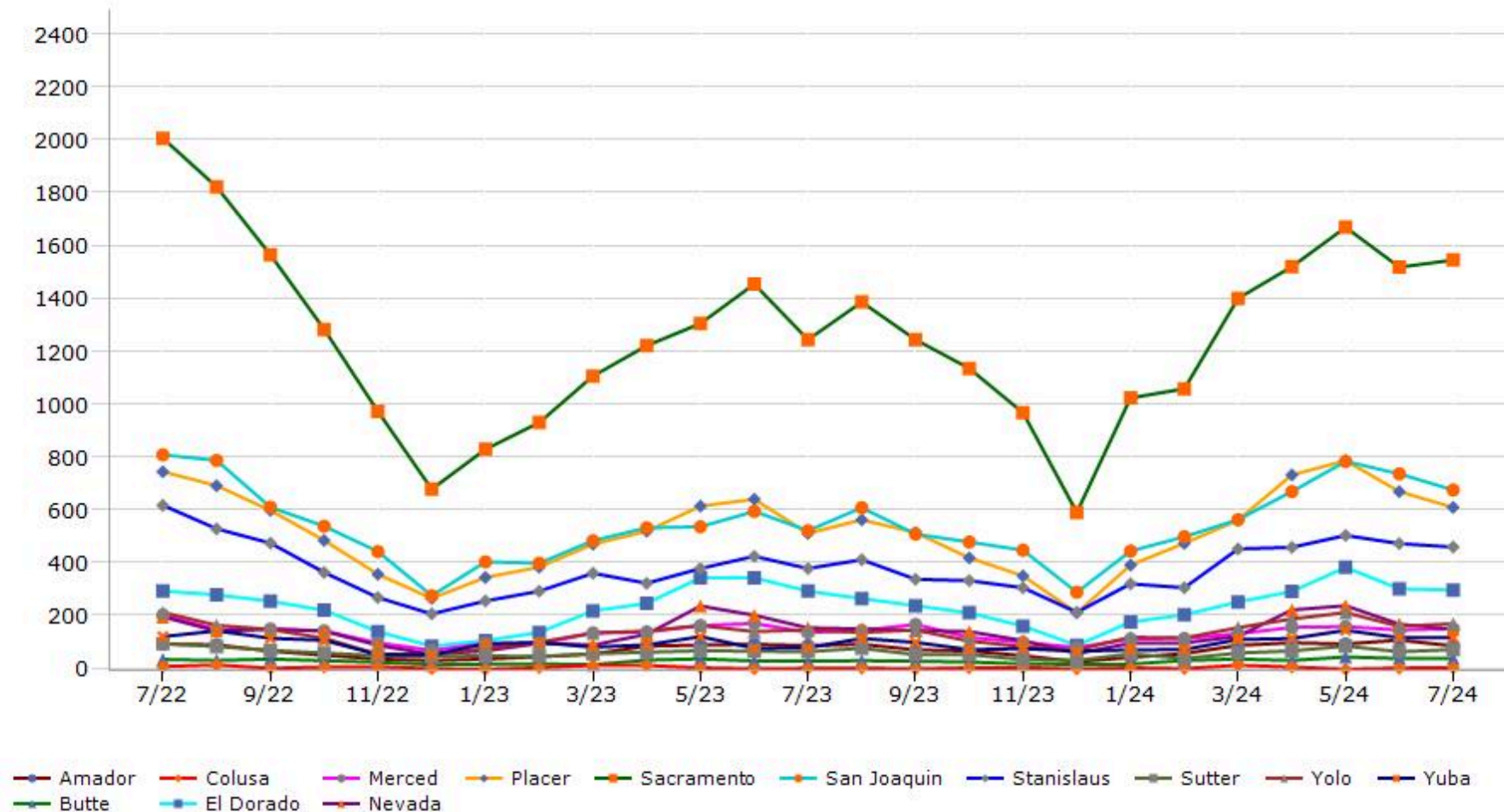
\*Month of Inventory is calculated by dividing the number of homes that went into contract in a given calendar month into the number of homes that were active at the end of a given calendar month.

# Trending Report: Jul 2022 - Jul 2024



CALIFORNIA REAL ESTATE BROKERS, INC.

## New Listing



Data provided by **MetroList**  
THE TRUE SOURCE

Powered by **TrendGraphix**  
YOUR HOME FOR REAL ESTATE DATA

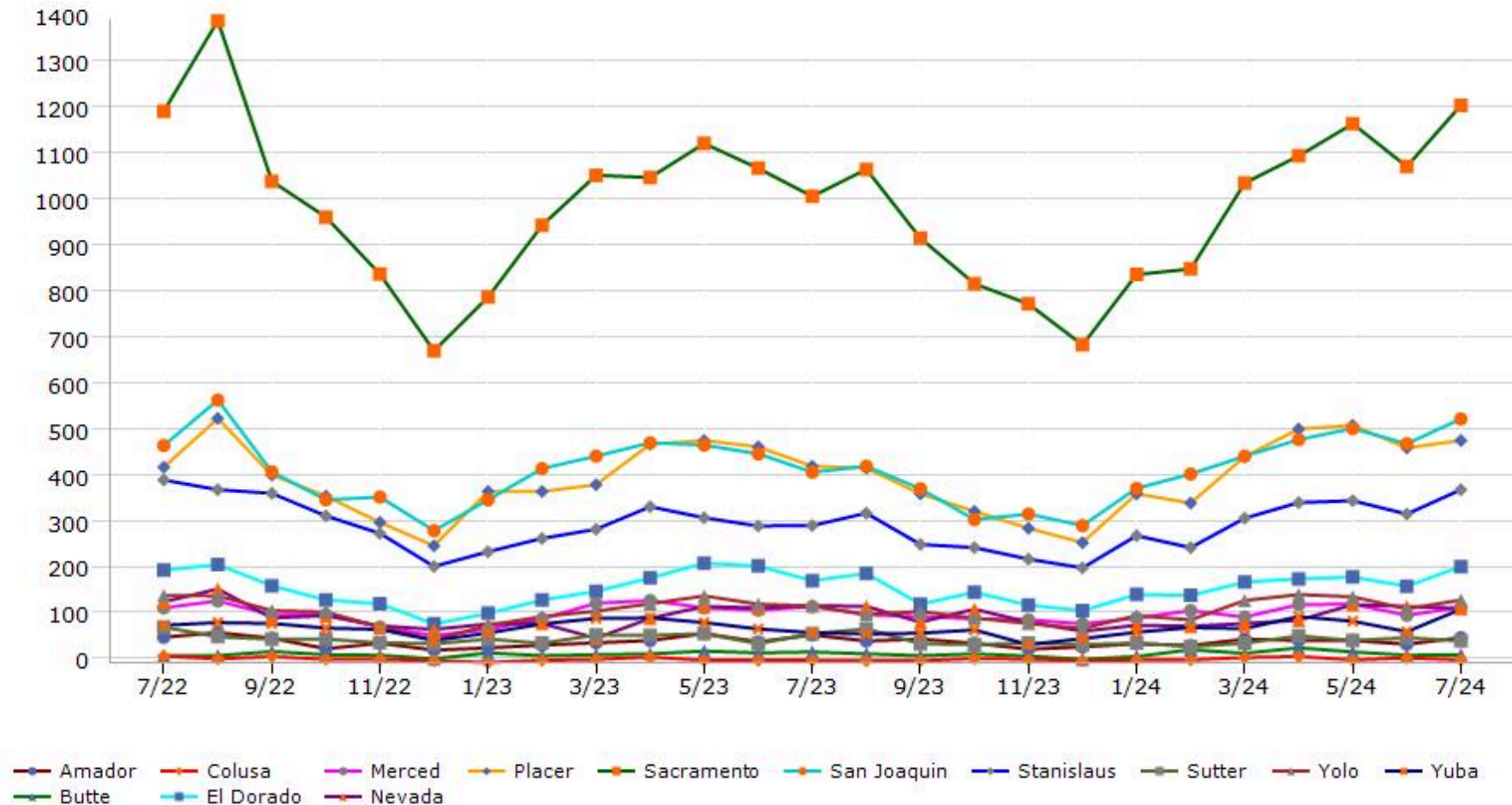
\*Data represents Residential Property class only.

# Trending Report: Jul 2022 - Jul 2024



CALIFORNIA REAL ESTATE BROKERS, INC.

## Pended



Data provided by **MetroList**  
THE TRUE SOURCE

Powered by **TrendGraphix**  
YOUR HOME FOR REAL ESTATE DATA

\*Data represents Residential Property class only.

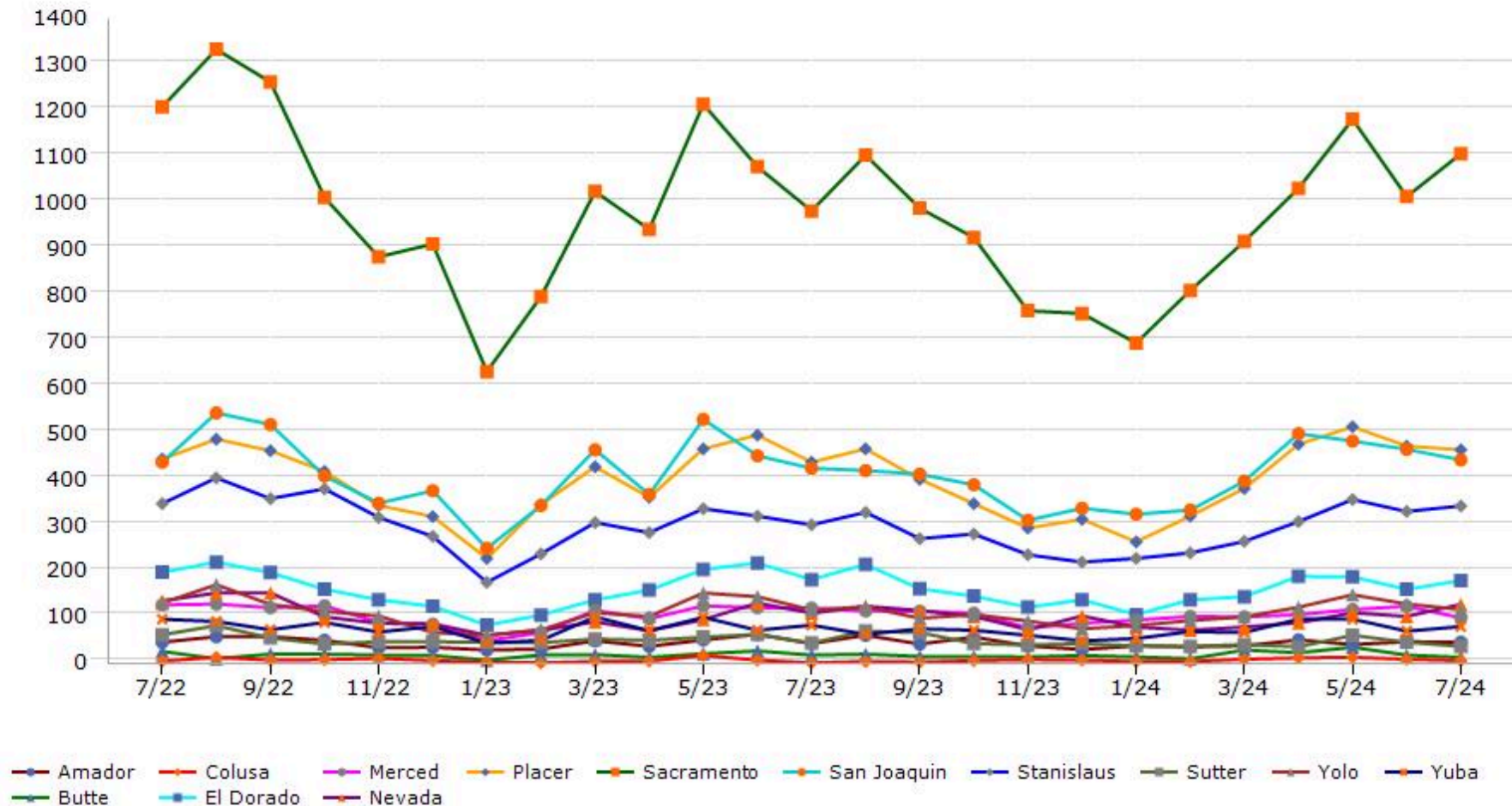
\*Pended represents the number of properties that went into contract during the course of a calendar month.

# Trending Report: Jul 2022 - Jul 2024



CALIFORNIA REAL ESTATE BROKERS, INC.

## Sold



Data provided by **MetroList**  
THE TRUE SOURCE

Powered by **TrendGraphix**  
YOUR HOME FOR REAL ESTATE DATA

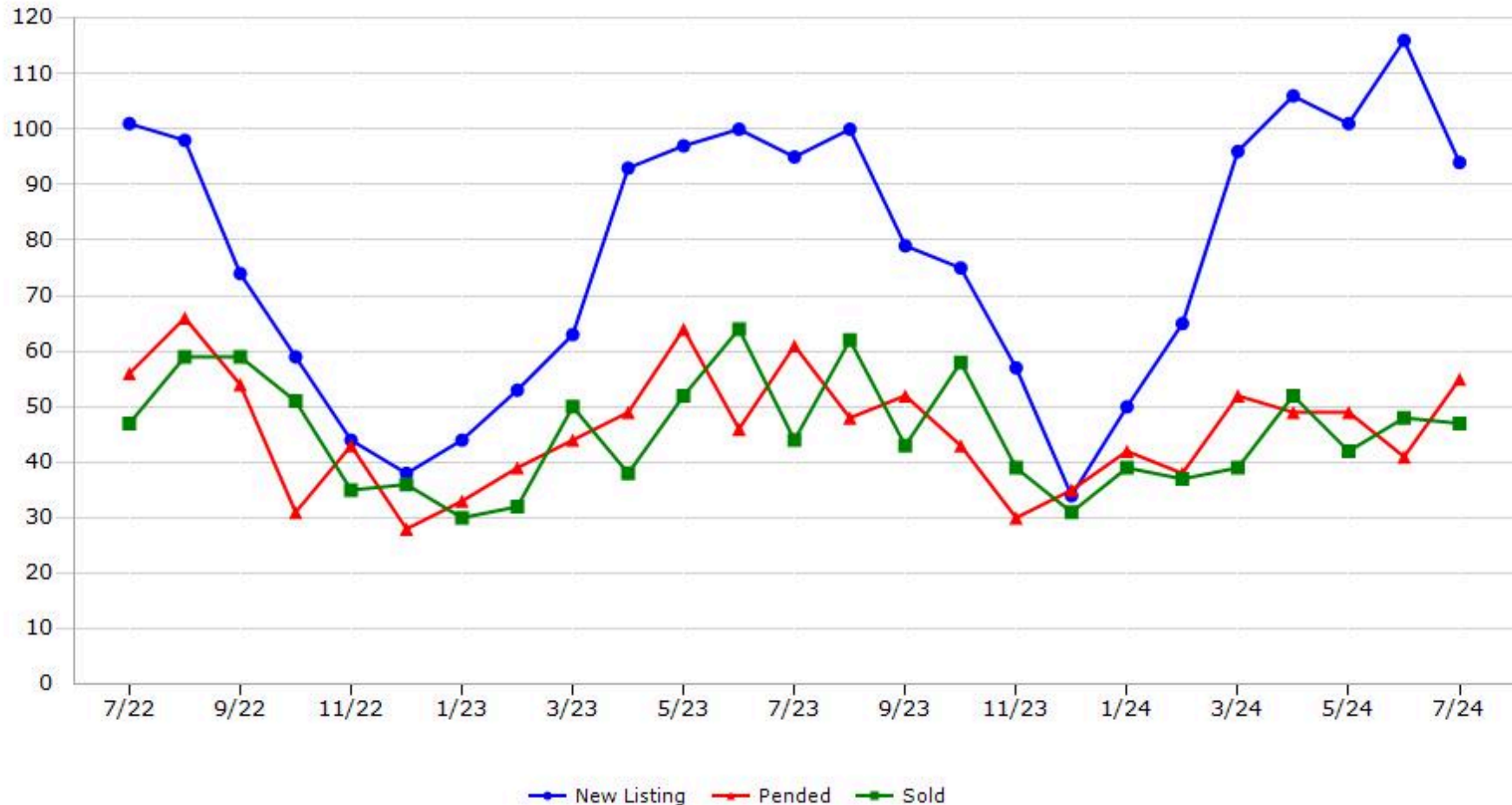
\*Data represents Residential Property class only.

# Trending Report: Jul 2022 - Jul 2024



CALIFORNIA REAL ESTATE BROKERS, INC.

## Amador County



Data provided by **MetroList**® THE TRUE SOURCE Powered by **TrendGraphix** YOUR HOME FOR REAL ESTATE DATA

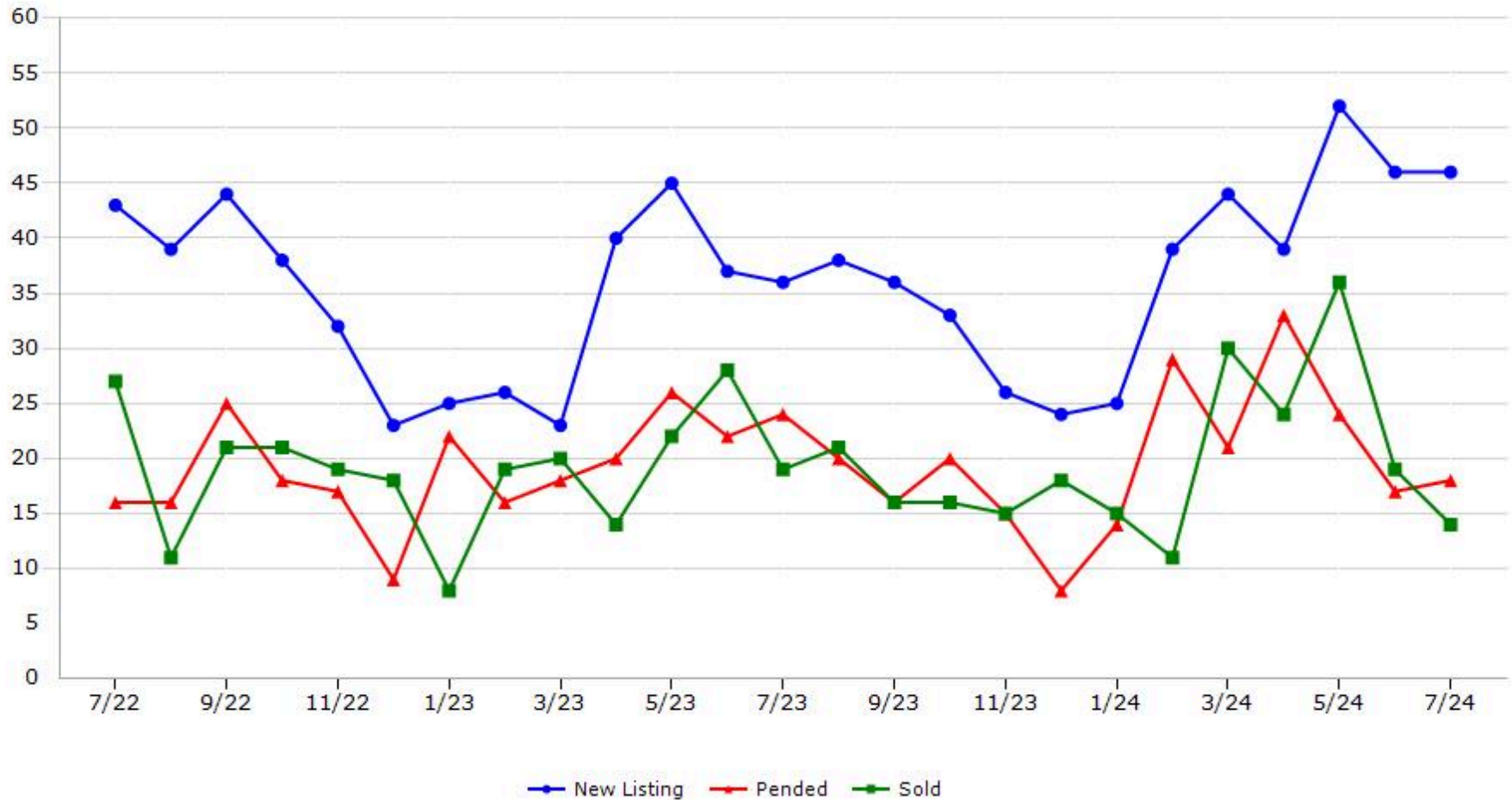
\*Data represents Residential Property class only.

\*Pended represents the number of properties that went into contract during the course of a calendar month.

# Trending Report: Jul 2022 - Jul 2024



## Butte County



Data provided by **MetroList**® THE TRUE SOURCE Powered by **TrendGraphix** YOUR HOME FOR REAL ESTATE DATA

\*Data represents Residential Property class only.

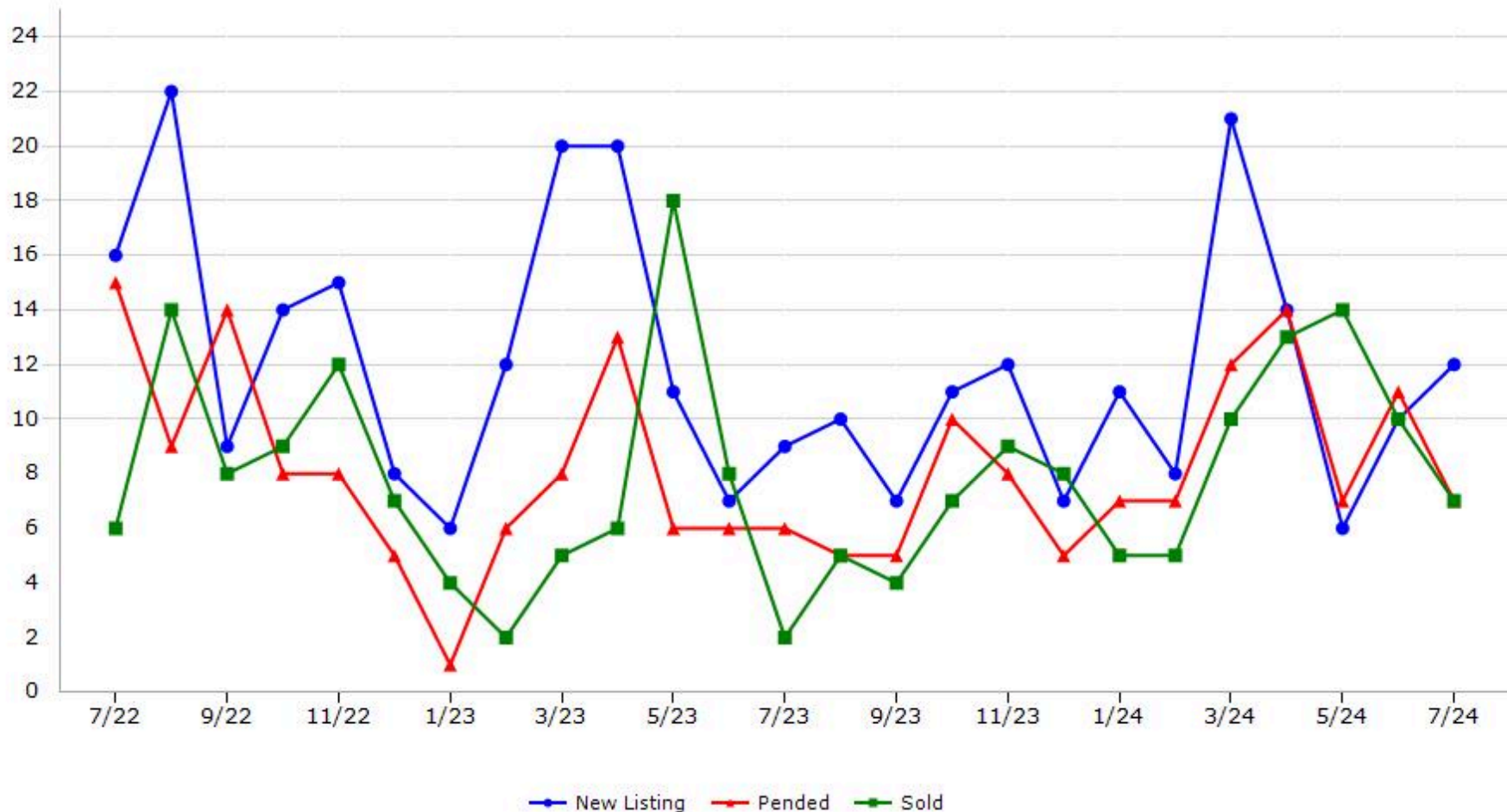
\*Pended represents the number of properties that went into contract during the course of a calendar month.

# Trending Report: Jul 2022 - Jul 2024



CALIFORNIA REAL ESTATE BROKERS, INC.

## Colusa County



Data provided by **MetroList**® THE TRUE SOURCE Powered by **TrendGraphix** YOUR HOME FOR REAL ESTATE DATA

\*Data represents Residential Property class only.

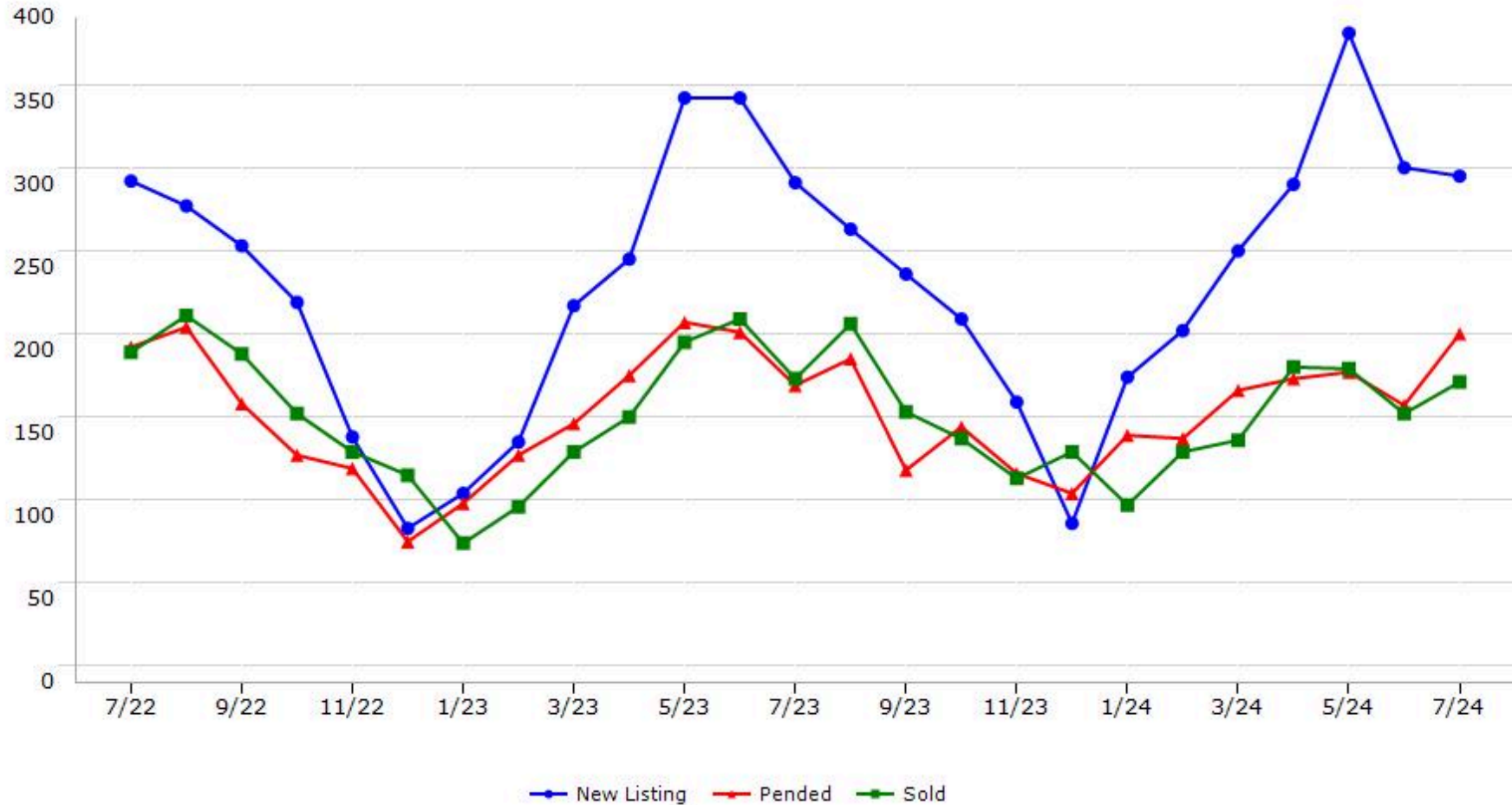
\*Pended represents the number of properties that went into contract during the course of a calendar month.

# Trending Report: Jul 2022 - Jul 2024



CALIFORNIA REAL ESTATE BROKERS, INC.

## El Dorado County



Data provided by **MetroList** THE TRUE SOURCE. Powered by **TrendGraphix** YOUR HOME FOR REAL ESTATE DATA.

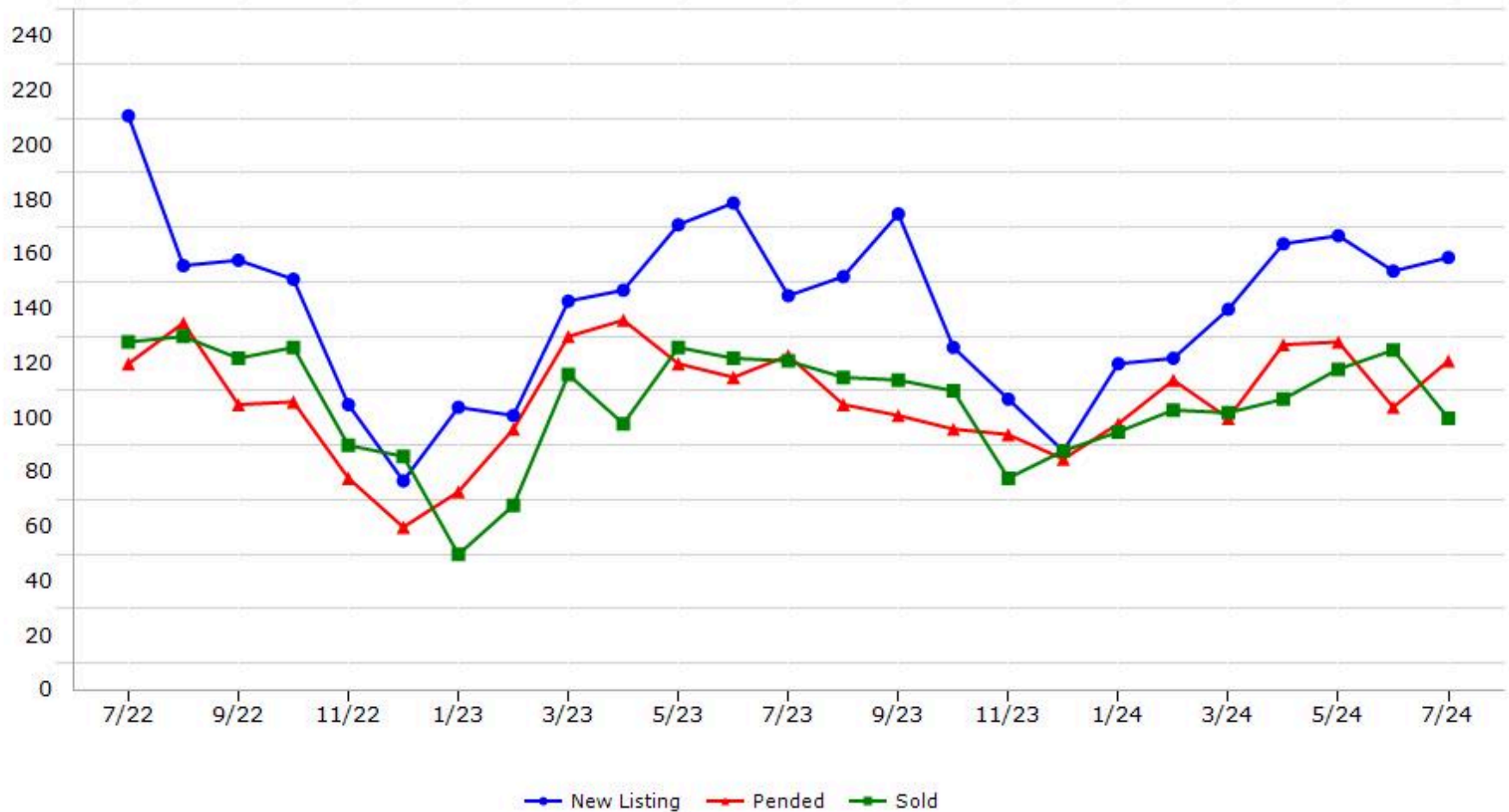
\*Data represents Residential Property class only.  
\*Pended represents the number of properties that went into contract during the course of a calendar month.



# Trending Report: Jul 2022 - Jul 2024



## Merced County



Data provided by **MetroList**® THE TRUE SOURCE Powered by **TrendGraphix** YOUR HOME FOR REAL ESTATE DATA

\*Data represents Residential Property class only.

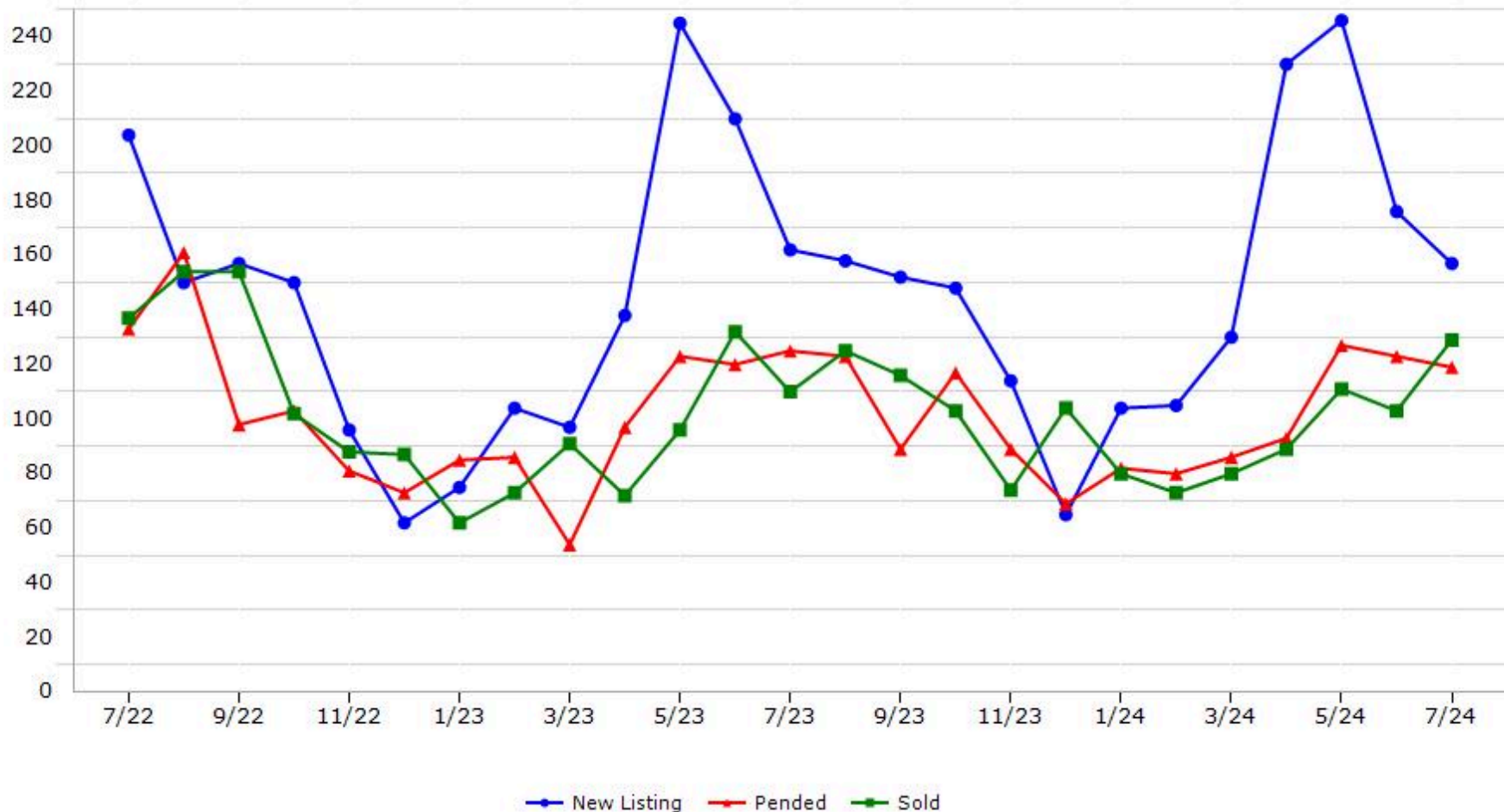
\*Pended represents the number of properties that went into contract during the course of a calendar month.

# Trending Report: Jul 2022 - Jul 2024



CALIFORNIA REAL ESTATE BROKERS, INC.

## Nevada County



Data provided by **MetroList**® THE TRUE SOURCE Powered by **TrendGraphix** YOUR HOME FOR REAL ESTATE DATA

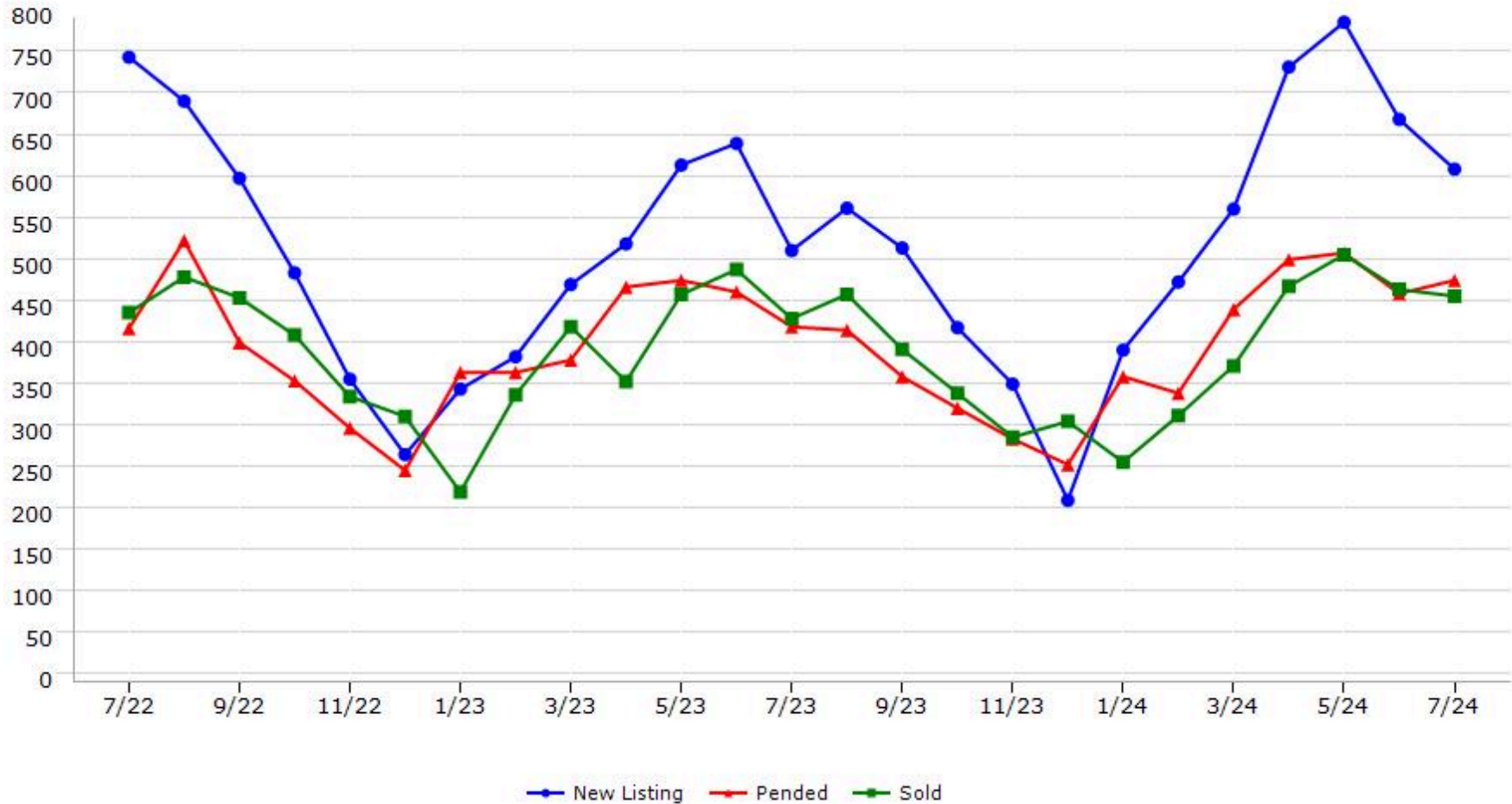
\*Data represents Residential Property class only.

\*Pended represents the number of properties that went into contract during the course of a calendar month.

# Trending Report: Jul 2022 - Jul 2024



## Placer County



Data provided by **MetroList**® THE TRUE SOURCE | Powered by **TrendGraphix** YOUR HOME FOR REAL ESTATE DATA

\*Data represents Residential Property class only.

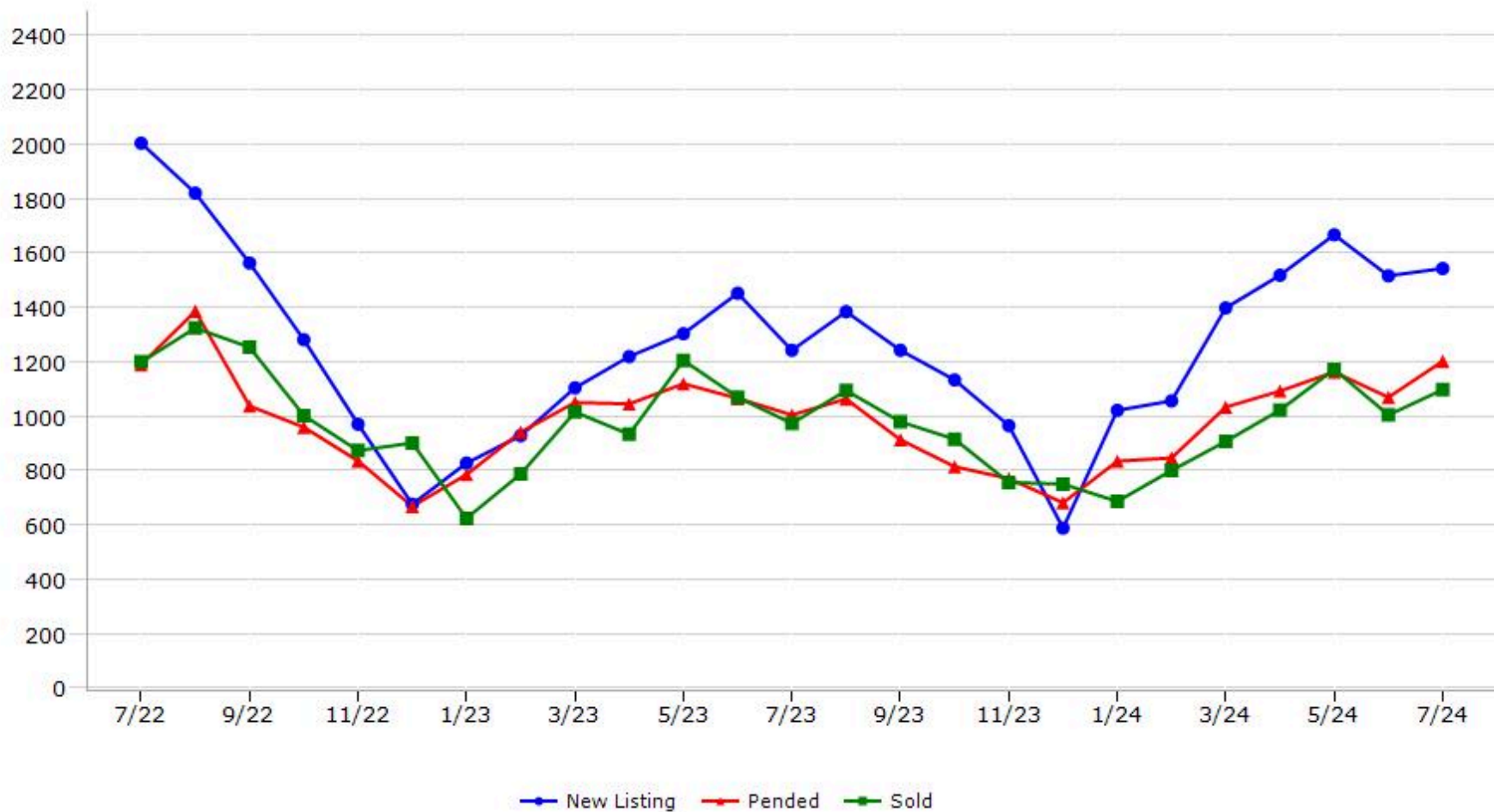
\*Pended represents the number of properties that went into contract during the course of a calendar month.

# Trending Report: Jul 2022 - Jul 2024



CALIFORNIA REAL ESTATE BROKERS, INC.

## Sacramento County



Data provided by **MetroList**® THE TRUE SOURCE. Powered by **TrendGraphix** YOUR HOME FOR REAL ESTATE DATA.

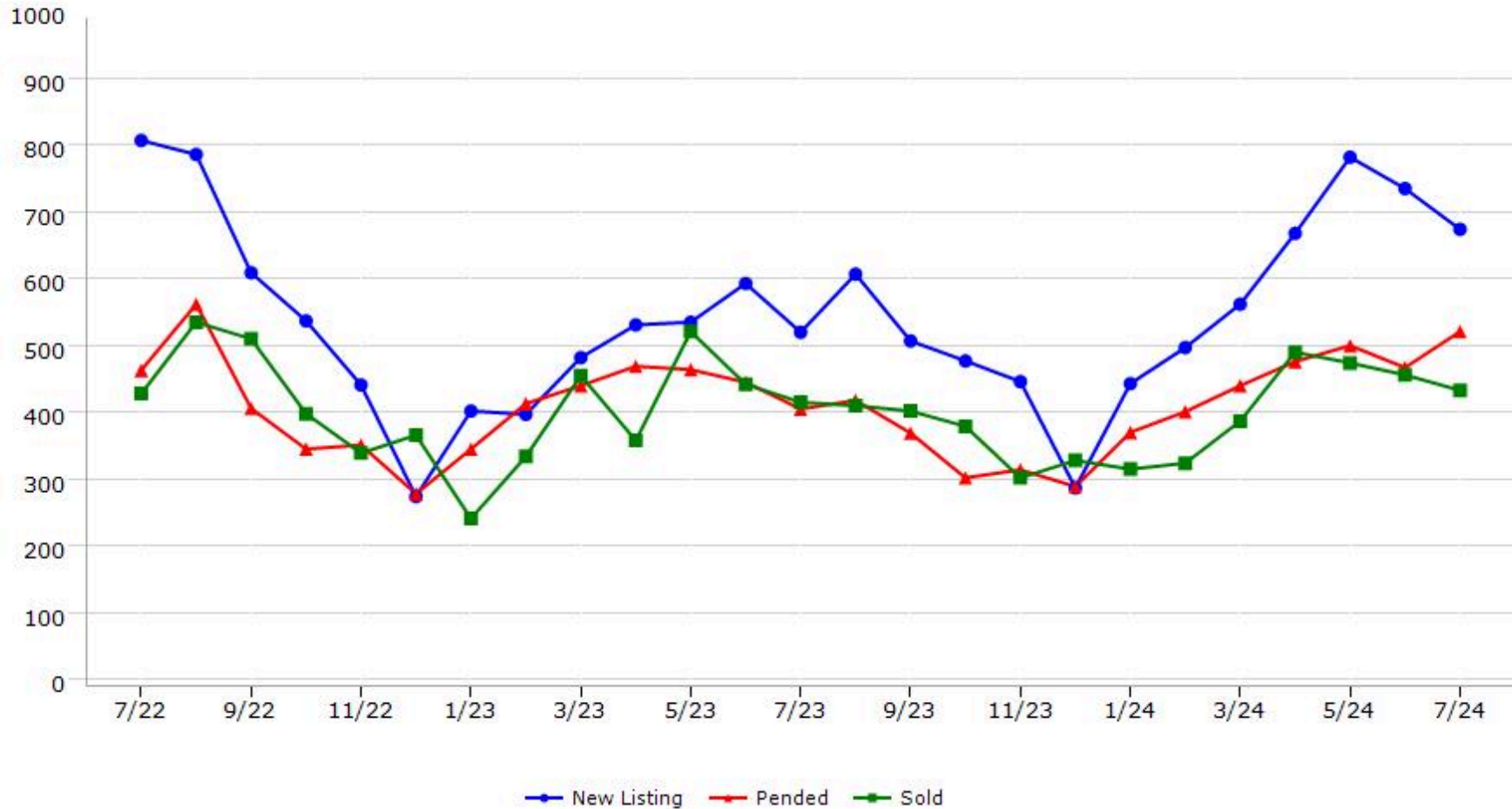
\*Data represents Residential Property class only.  
\*Pended represents the number of properties that went into contract during the course of a calendar month.

# Trending Report: Jul 2022 - Jul 2024



CALIFORNIA REAL ESTATE BROKERS, INC.

## San Joaquin County



Data provided by **MetroList**<sup>®</sup> THE TRUE SOURCE Powered by **TrendGraphix** YOUR HOME FOR REAL ESTATE DATA

\*Data represents Residential Property class only.

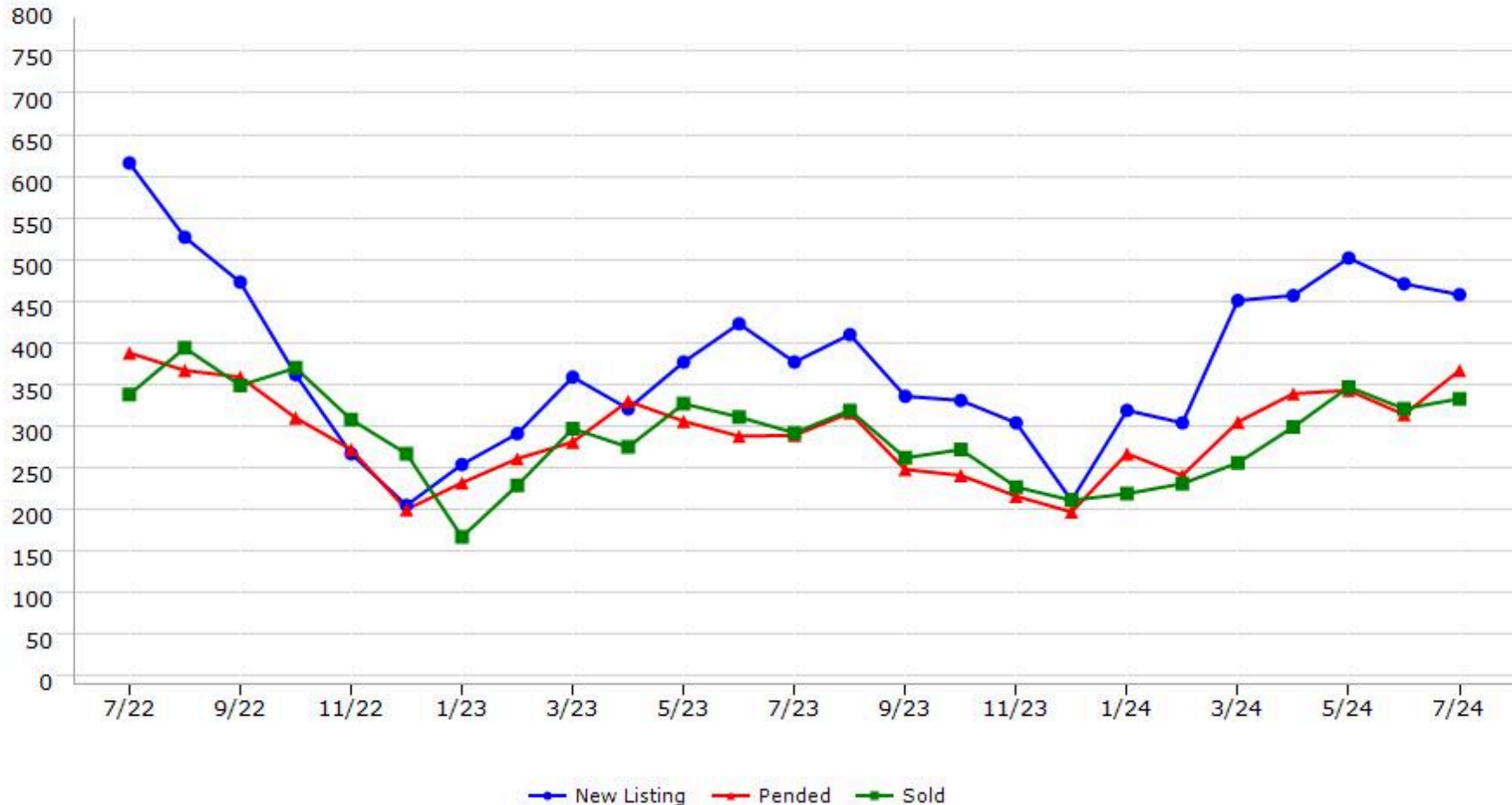
\*Pended represents the number of properties that went into contract during the course of a calendar month.

# Trending Report: Jul 2022 - Jul 2024



CALIFORNIA REAL ESTATE BROKERS, INC.

## Stanislaus County



Data provided by **MetroList** THE TRUE SOURCE. Powered by **TrendGraphix** YOUR HOME FOR REAL ESTATE DATA.

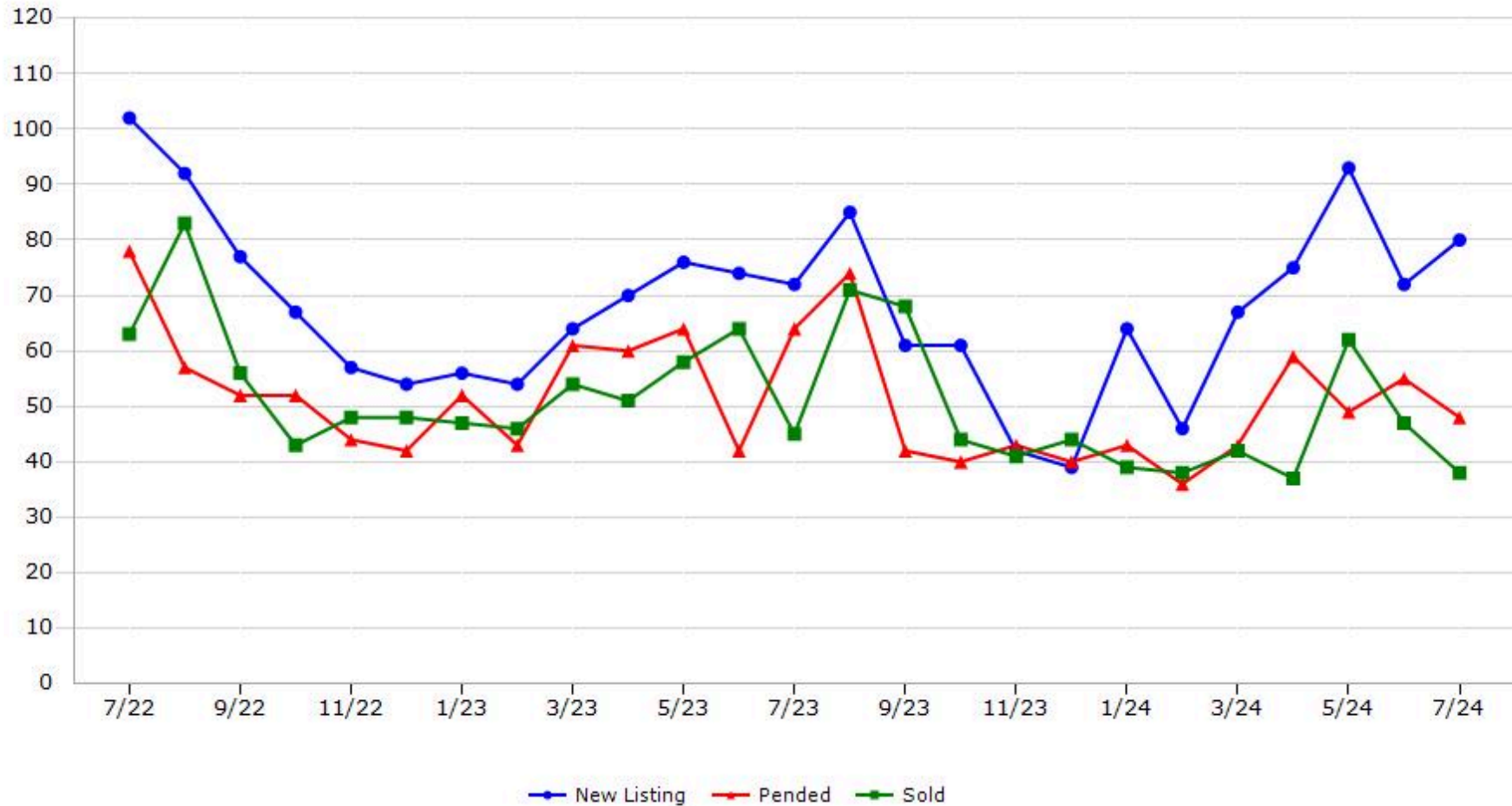
\*Data represents Residential Property class only.  
\*Pended represents the number of properties that went into contract during the course of a calendar month.

# Trending Report: Jul 2022 - Jul 2024



CALIFORNIA REAL ESTATE BROKERS, INC.

## Sutter County



Data provided by **MetroList** THE TRUE SOURCE Powered by **TrendGraphix** YOUR HOME FOR REAL ESTATE DATA

\*Data represents Residential Property class only.

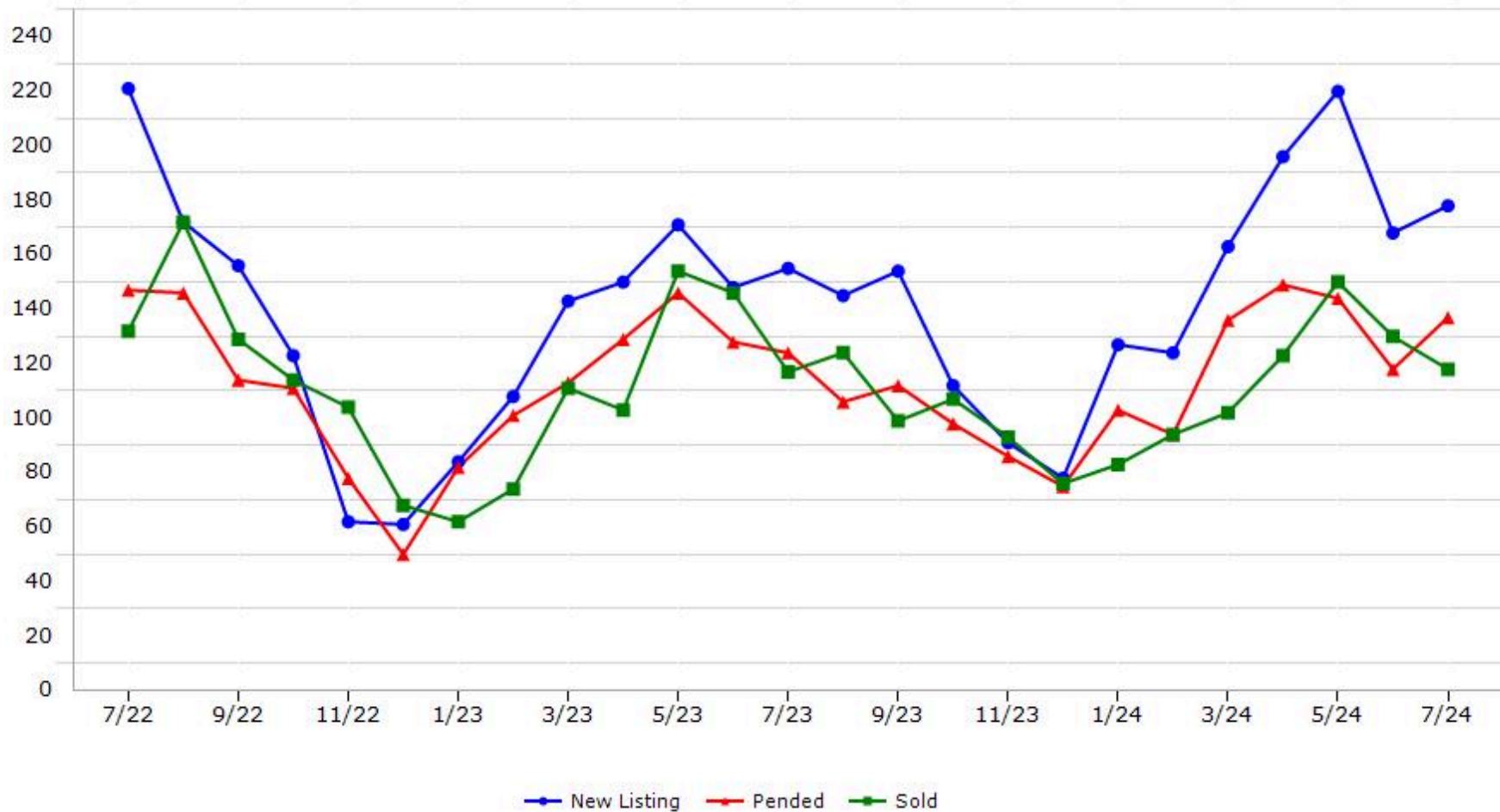
\*Pended represents the number of properties that went into contract during the course of a calendar month.

# Trending Report: Jul 2022 - Jul 2024



CALIFORNIA REAL ESTATE BROKERS, INC.

## Yolo County



Data provided by **MetroList** THE TRUE SOURCE. Powered by **TrendGraphix** YOUR HOME FOR REAL ESTATE DATA.

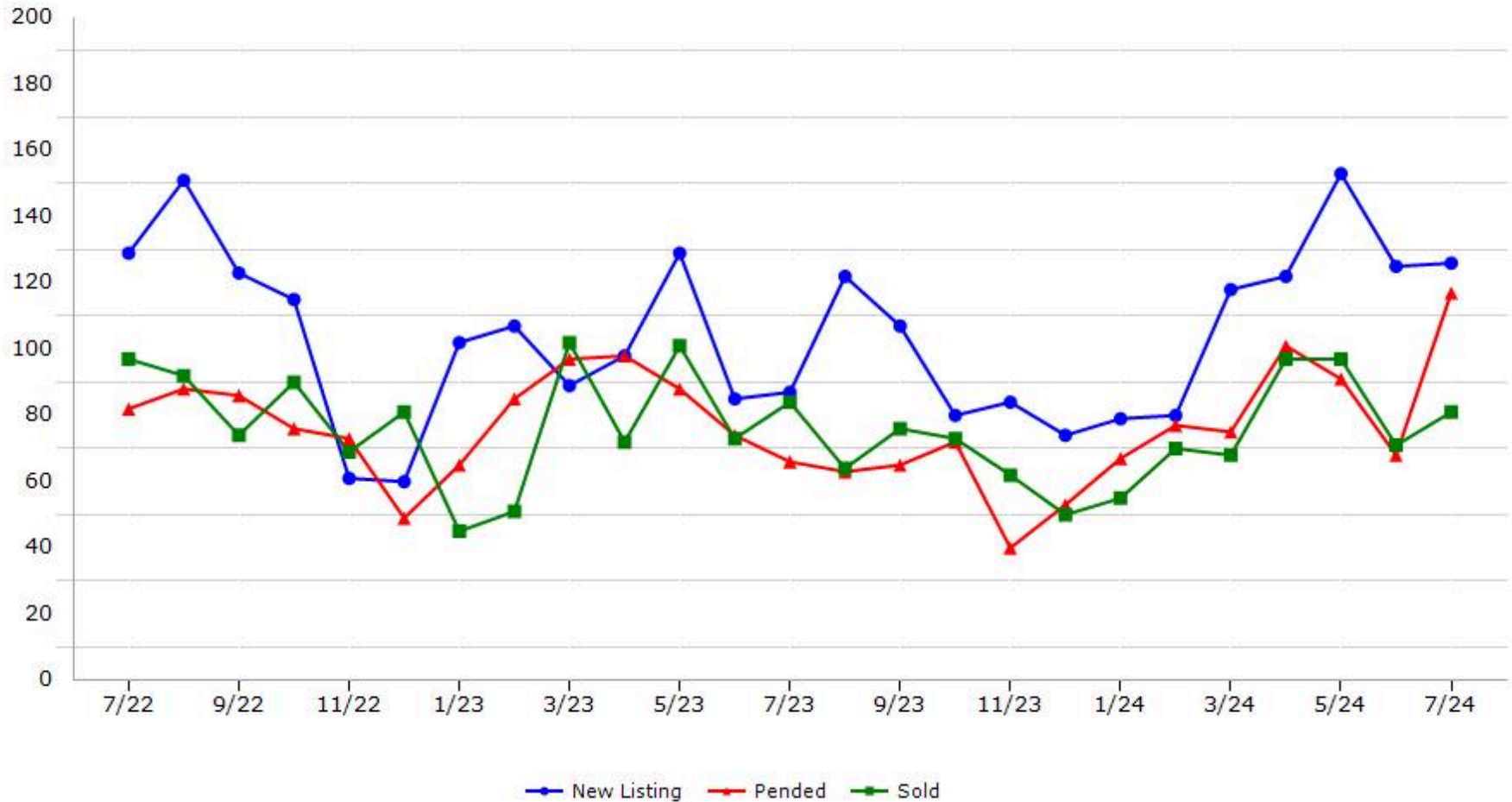
\*Data represents Residential Property class only.  
\*Pended represents the number of properties that went into contract during the course of a calendar month.



# Trending Report: Jul 2022 - Jul 2024



## Yuba County



Data provided by **MetroList**® THE TRUE SOURCE | Powered by **TrendGraphix** YOUR HOME FOR REAL ESTATE DATA

\*Data represents Residential Property class only.

\*Pended represents the number of properties that went into contract during the course of a calendar month.