

# Monthly Market Report - May 2024



CALIFORNIA REAL ESTATE BROKERS, INC.

## MetroList All Areas

May 2024 vs Apr 2024

### New Listing

5105 4574 12% ↑

### Pended

3573 3223 11% ↑

### Sold

3153 2977 6% ↑

### Avg DOM

26 29 -10% ↓

### Month of Inventory

1.7 1.6 6% ↑

## New Listing By County

May 2024 vs Apr 2024

Amador	101	104	-3%	↓
Butte	49	37	32%	↑
Colusa	6	14	-57%	↓
El Dorado	387	299	29%	↑
Merced	165	163	1%	↑
Nevada	245	229	7%	↑
Placer	788	737	7%	↑
Sacramento	1667	1515	10%	↑
San Joaquin	733	636	15%	↑
Stanislaus	501	450	11%	↑
Sutter	92	75	23%	↑
Yolo	218	195	12%	↑
Yuba	153	121	26%	↑

## Pended By County

May 2024 vs Apr 2024

Amador	56	49	14%	↑
Butte	26	33	-21%	↓
Colusa	7	14	-50%	↓
El Dorado	204	182	12%	↑
Merced	142	126	13%	↑
Nevada	145	95	53%	↑
Placer	548	512	7%	↑
Sacramento	1250	1092	14%	↑
San Joaquin	512	461	11%	↑
Stanislaus	384	348	10%	↑
Sutter	56	59	-5%	↓
Yolo	150	148	1%	↑
Yuba	93	104	-11%	↓

## Sold By County

May 2024 vs Apr 2024

Amador	42	51	-18%	↓
Butte	35	24	46%	↑
Colusa	13	13	0%	
El Dorado	179	190	-6%	↓
Merced	110	106	4%	↑
Nevada	107	89	20%	↑
Placer	494	467	6%	↑
Sacramento	1112	1017	9%	↑
San Joaquin	435	459	-5%	↓
Stanislaus	335	305	10%	↑
Sutter	57	37	54%	↑
Yolo	142	123	15%	↑
Yuba	92	96	-4%	↓

Data provided by **MetroList**  
THE TRUE SOURCE

Powered by **TrendGraphix**  
YOUR HOME FOR REAL ESTATE DATA

\*Data represents Residential Property class only.

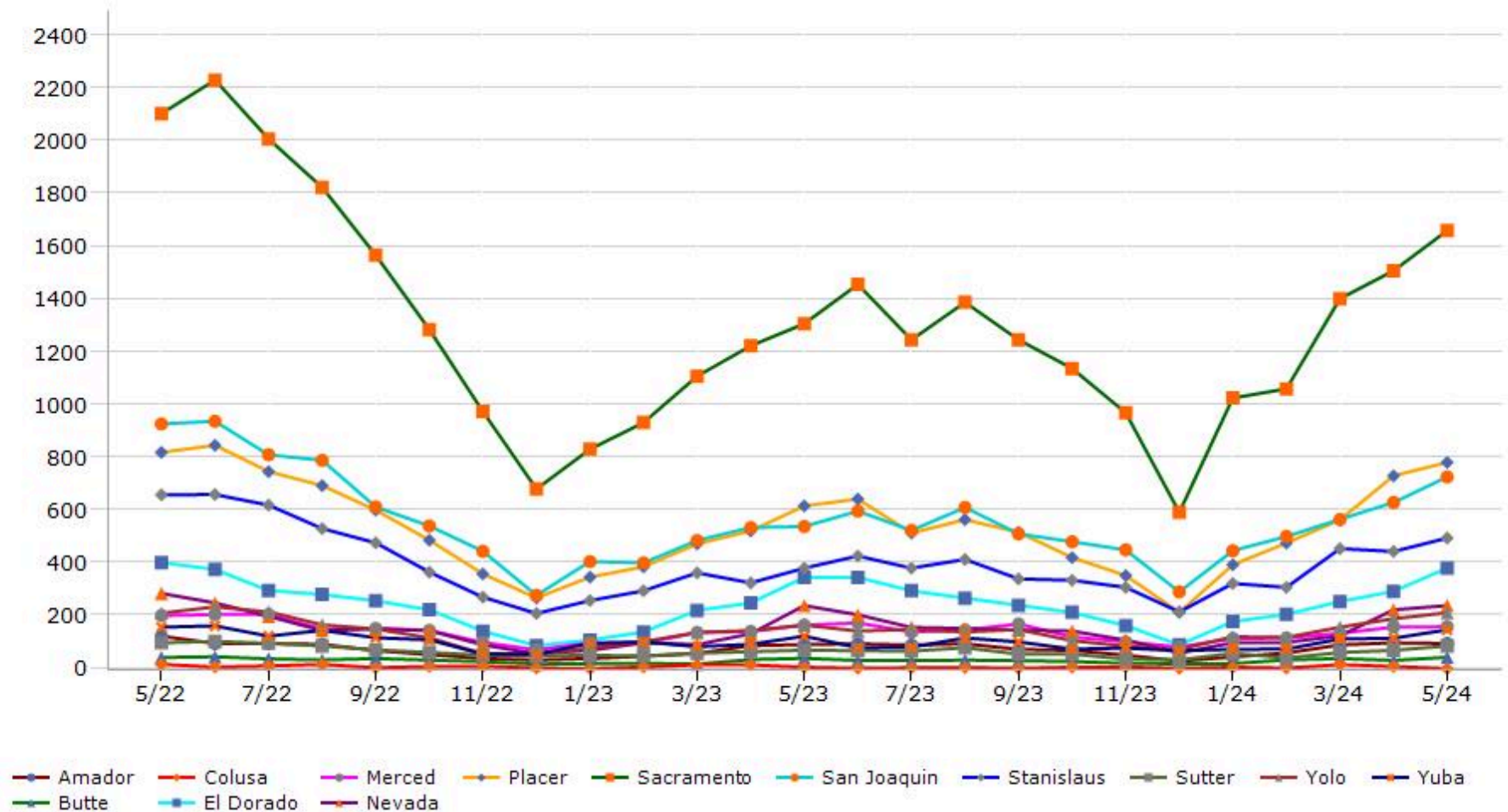
\*Pended represents the number of properties that went into contract during the course of a calendar month.

\*Month of Inventory is calculated by dividing the number of homes that went into contract in a given calendar month into the number of homes that were active at the end of a given calendar month.

# Trending Report: May 2022 - May 2024



## New Listing



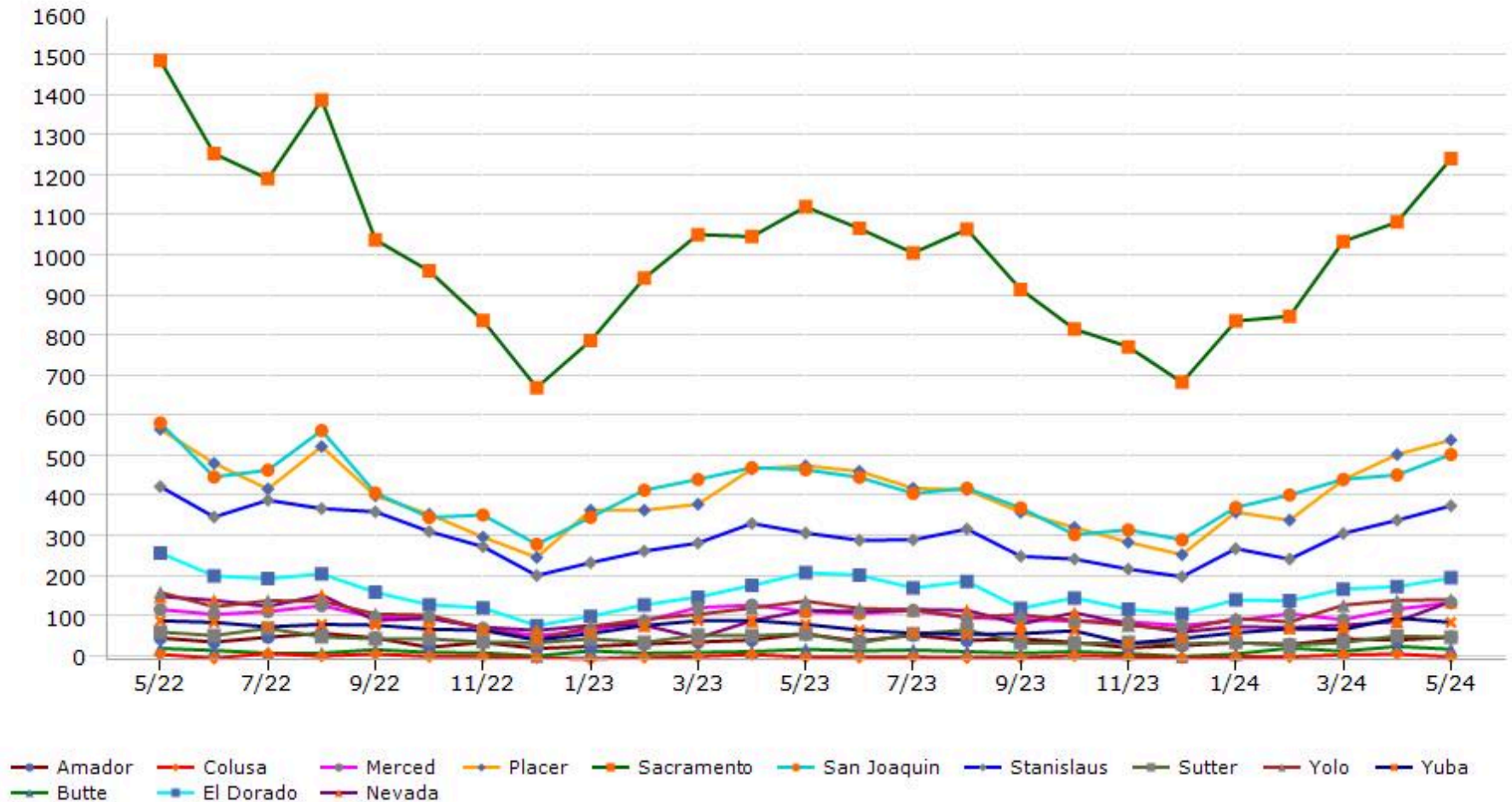
Data provided by **MetroList** THE TRUE SOURCE | Powered by **TrendGraphix** YOUR HOME FOR REAL ESTATE DATA

\*Data represents Residential Property class only.

# Trending Report: May 2022 - May 2024



## Pended



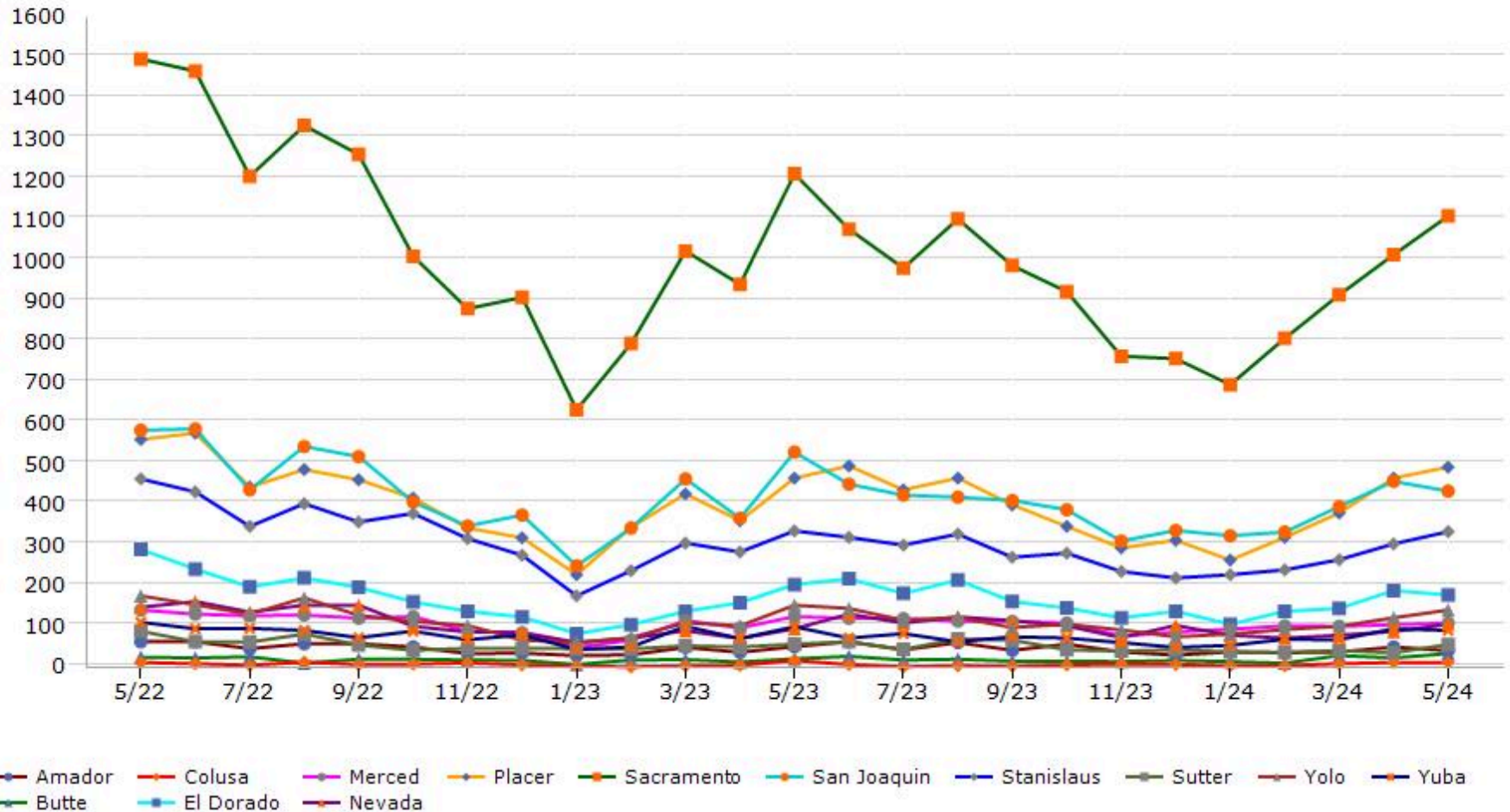
Data provided by **MetroList** THE TRUE SOURCE. Powered by **TrendGraphix** YOUR HOME FOR REAL ESTATE DATA.

\*Data represents Residential Property class only.  
 \*Pended represents the number of properties that went into contract during the course of a calendar month.

# Trending Report: May 2022 - May 2024



## Sold



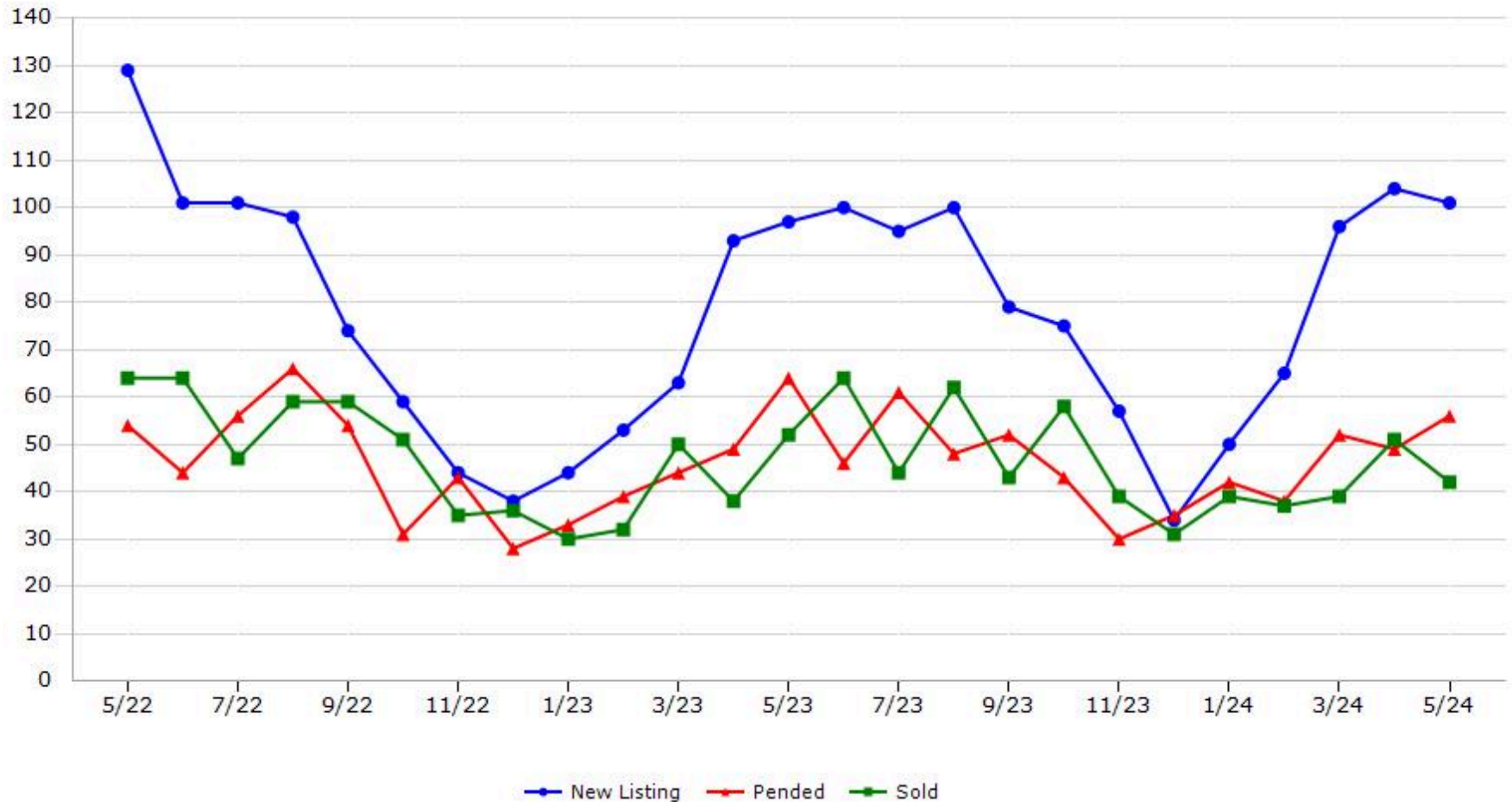
Data provided by **MetroList**® THE TRUE SOURCE | Powered by **TrendGraphix** YOUR HOME FOR REAL ESTATE DATA

\*Data represents Residential Property class only.

# Trending Report: May 2022 - May 2024



## Amador County



Data provided by **MetroList**® THE TRUE SOURCE Powered by **TrendGraphix** YOUR HOME FOR REAL ESTATE DATA

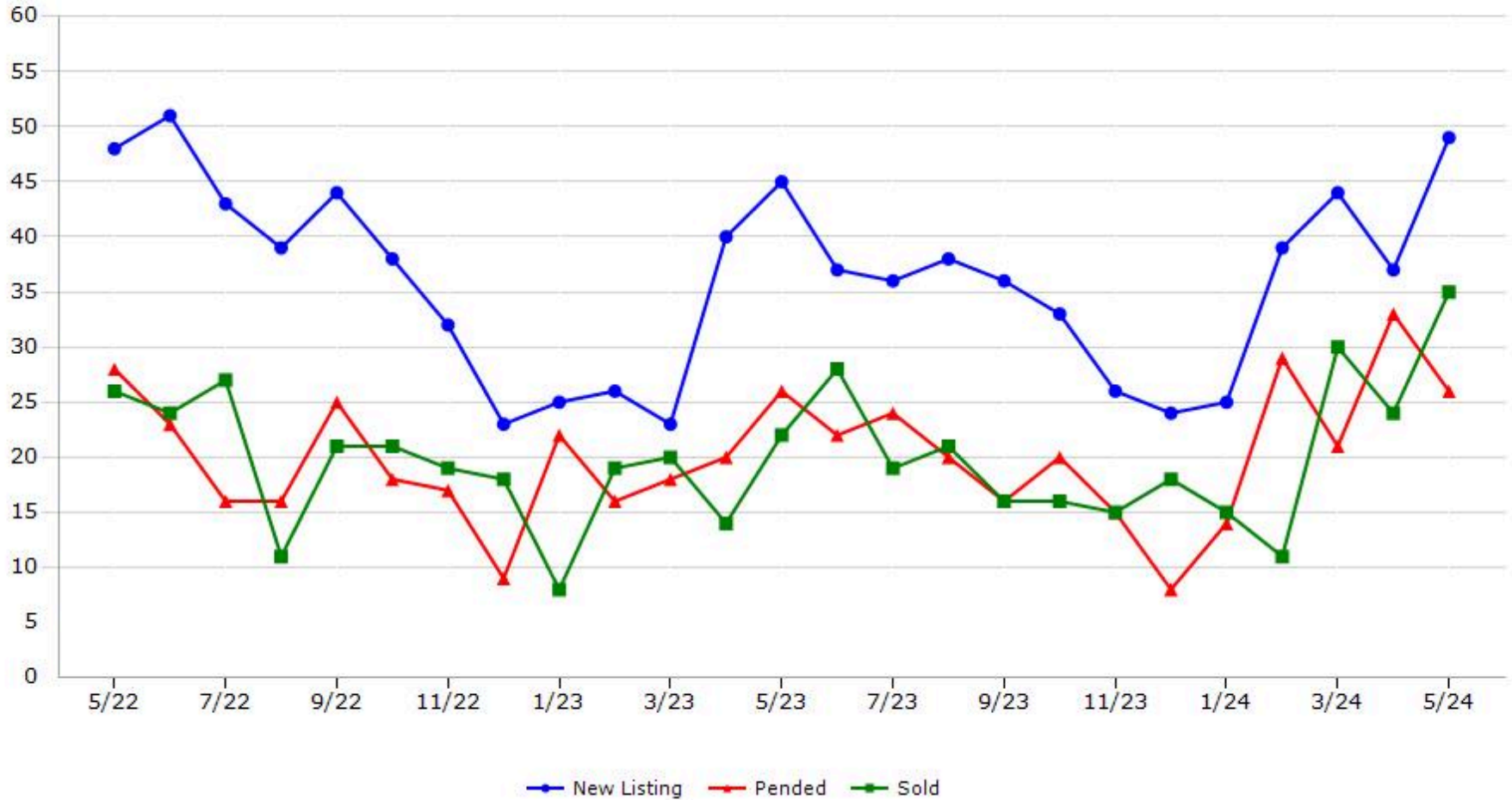
\*Data represents Residential Property class only.

\*Pended represents the number of properties that went into contract during the course of a calendar month.

# Trending Report: May 2022 - May 2024



## Butte County



Data provided by **MetroList** THE TRUE SOURCE Powered by **TrendGraphix** YOUR HOME FOR REAL ESTATE DATA

\*Data represents Residential Property class only.

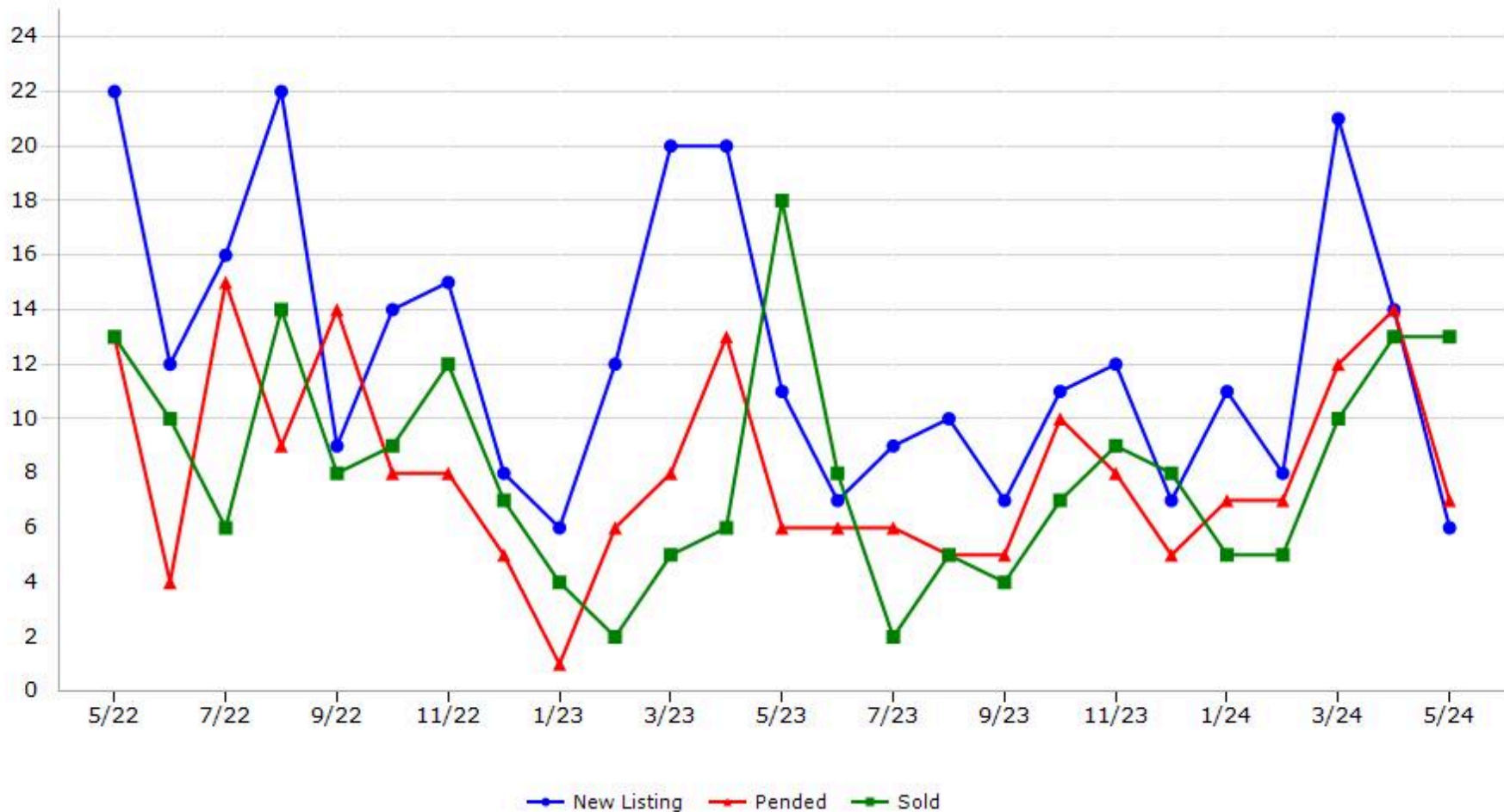
\*Pended represents the number of properties that went into contract during the course of a calendar month.

# Trending Report: May 2022 - May 2024



CALIFORNIA REAL ESTATE BROKERS, INC.

## Colusa County



Data provided by **MetroList** THE TRUE SOURCE Powered by **TrendGraphix** YOUR HOME FOR REAL ESTATE DATA

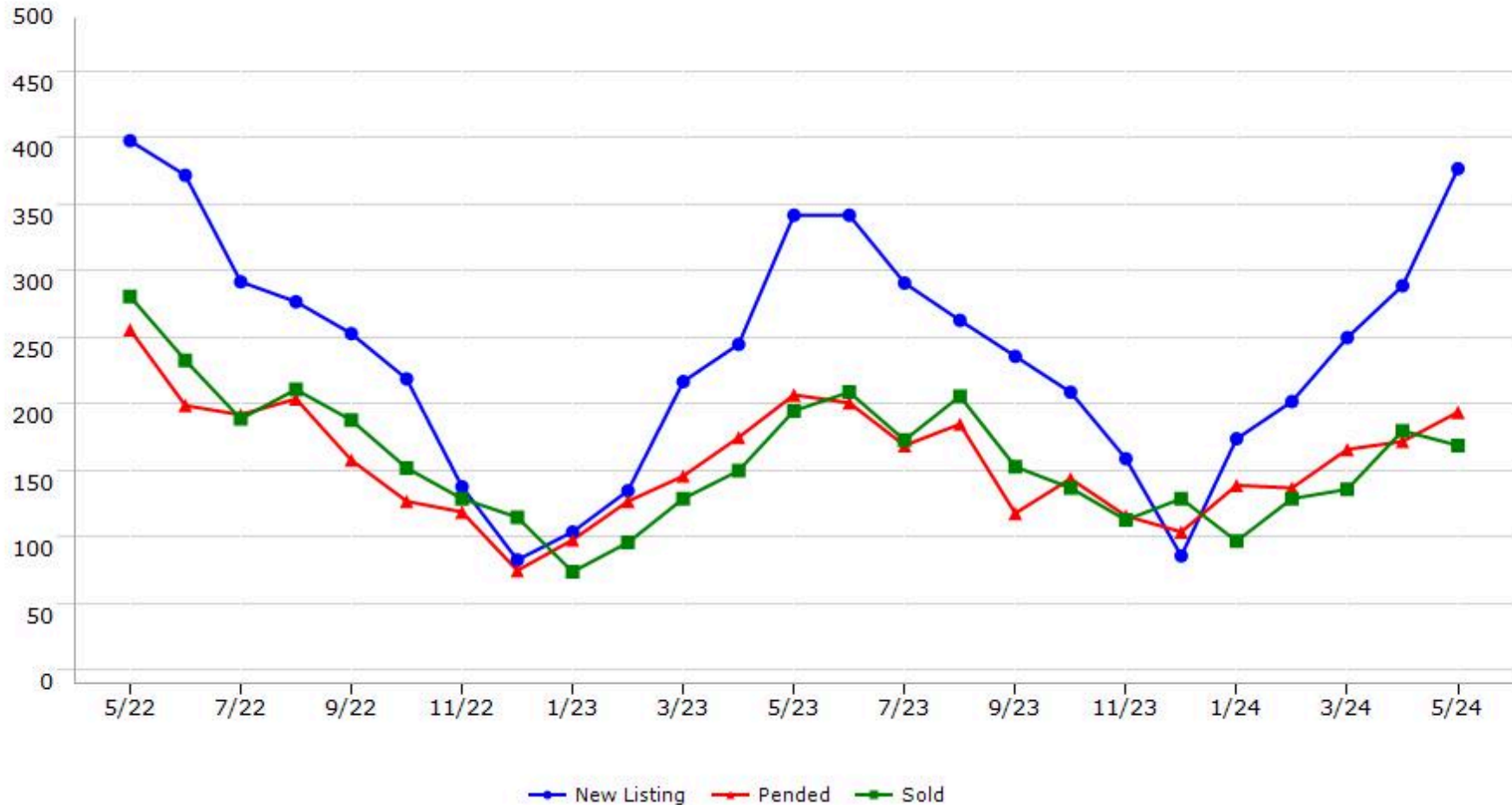
\*Data represents Residential Property class only.  
\*Pended represents the number of properties that went into contract during the course of a calendar month.

# Trending Report: May 2022 - May 2024



CALIFORNIA REAL ESTATE BROKERS, INC.

## El Dorado County



Data provided by **MetroList** THE TRUE SOURCE. Powered by **TrendGraphix** YOUR HOME FOR REAL ESTATE DATA.

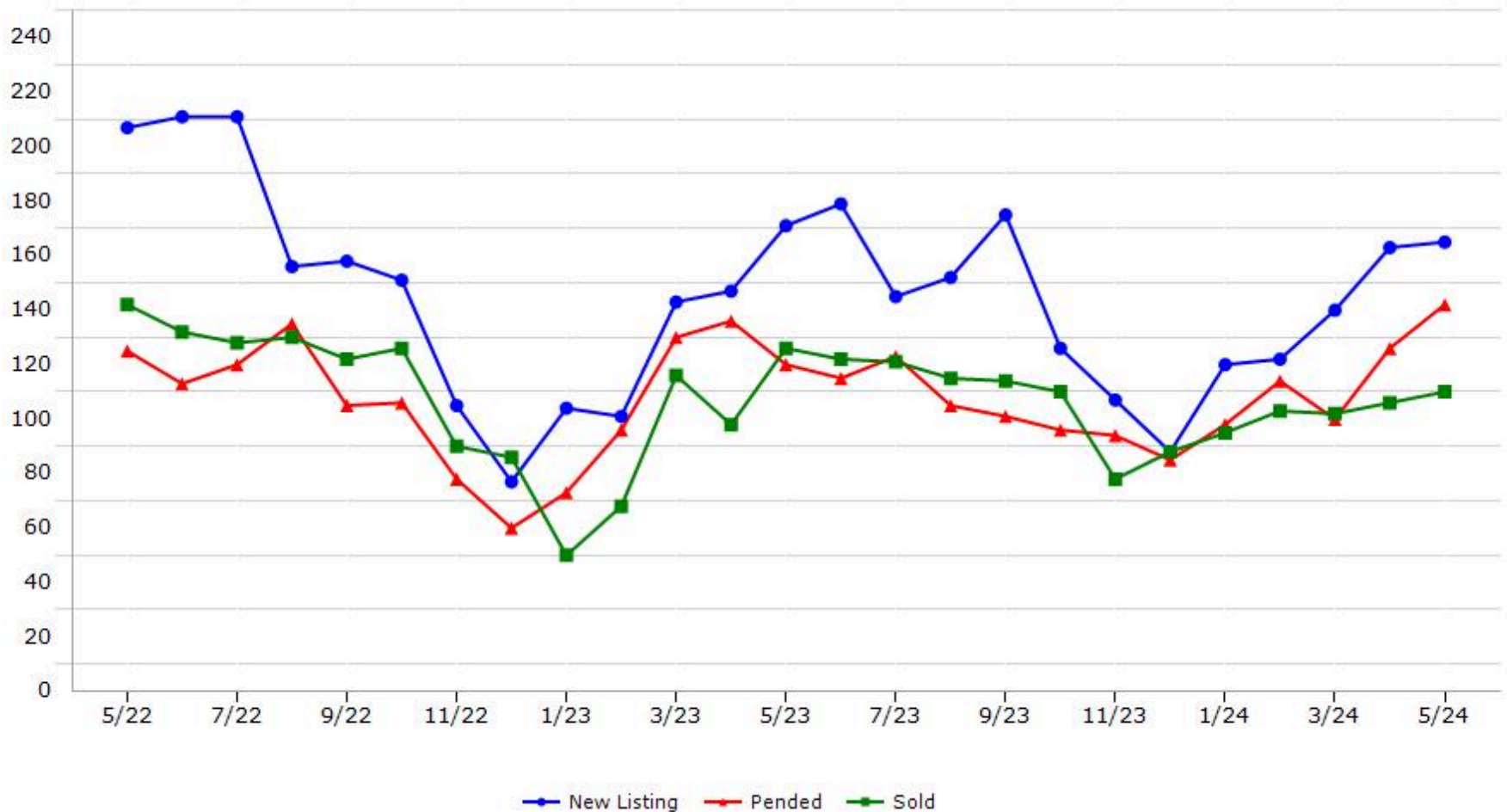
\*Data represents Residential Property class only.  
\*Pended represents the number of properties that went into contract during the course of a calendar month.



# Trending Report: May 2022 - May 2024



## Merced County



Data provided by **MetroList**® THE TRUE SOURCE Powered by **TrendGraphix** YOUR HOME FOR REAL ESTATE DATA

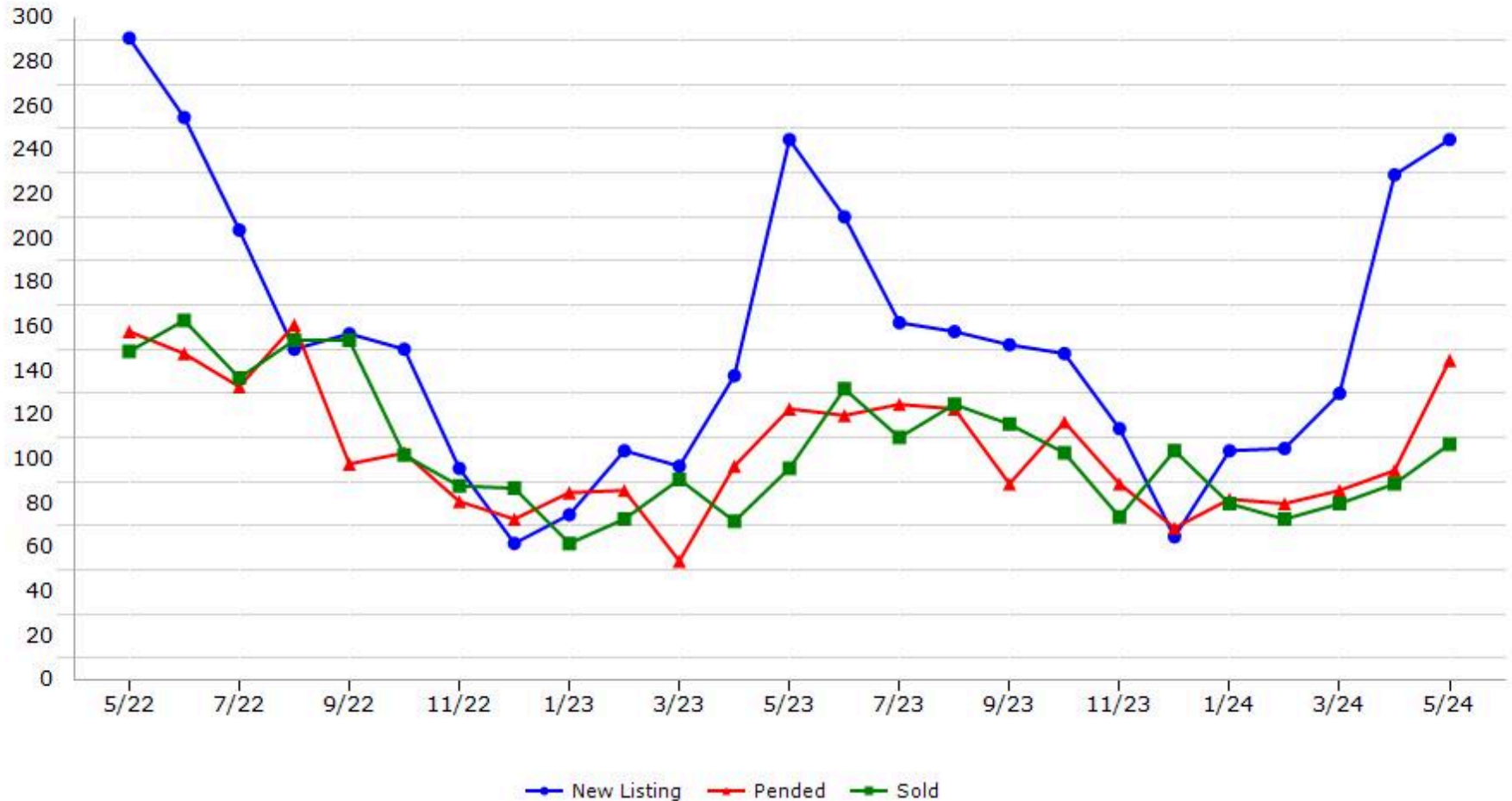
\*Data represents Residential Property class only.

\*Pended represents the number of properties that went into contract during the course of a calendar month.

# Trending Report: May 2022 - May 2024



## Nevada County



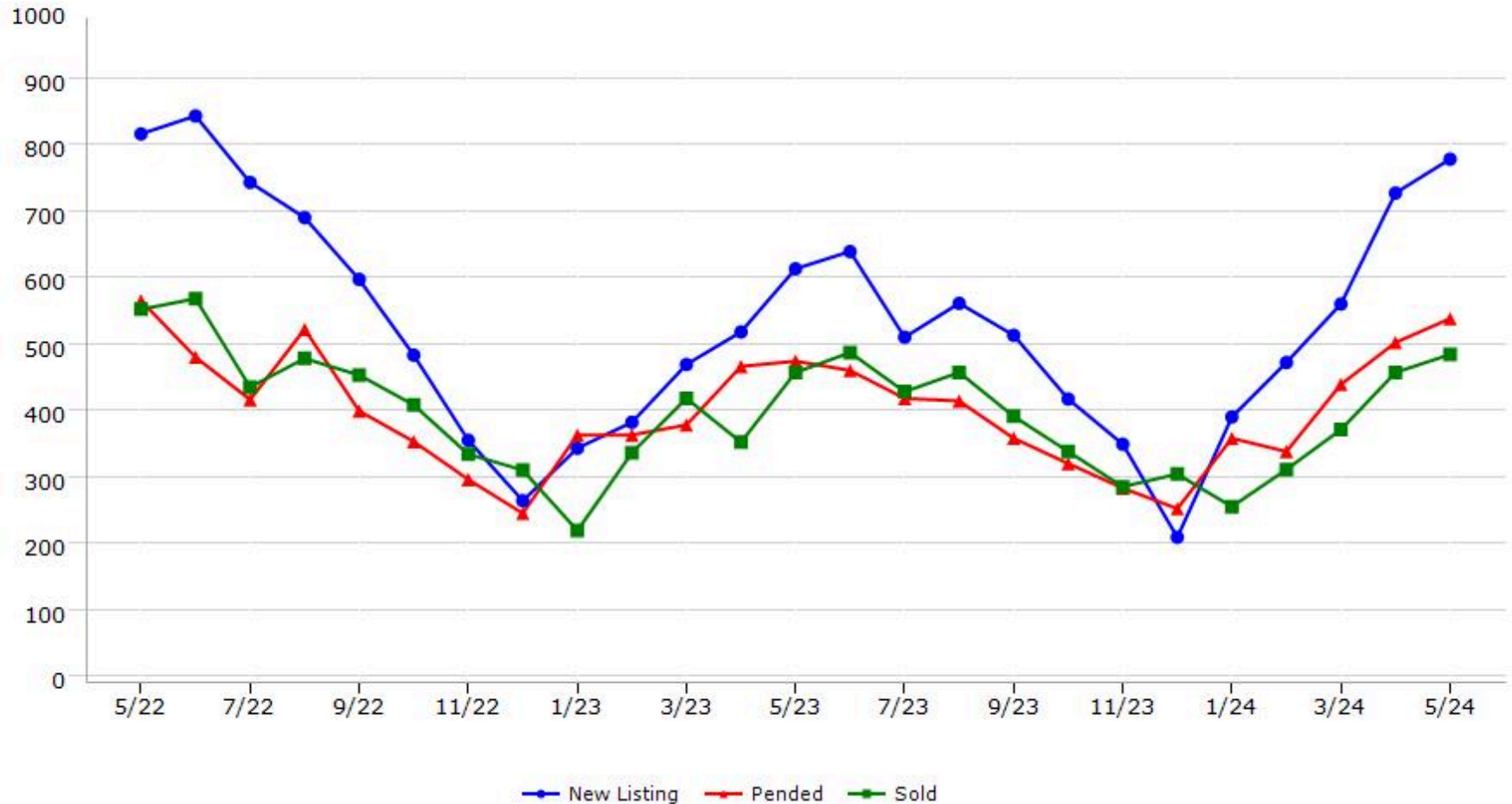
Data provided by **MetroList** THE TRUE SOURCE. Powered by **TrendGraphix** YOUR HOME FOR REAL ESTATE DATA.

\*Data represents Residential Property class only.  
\*Pended represents the number of properties that went into contract during the course of a calendar month.

# Trending Report: May 2022 - May 2024



## Placer County



Data provided by **MetroList** THE TRUE SOURCE. Powered by **TrendGraphix** YOUR HOME FOR REAL ESTATE DATA.

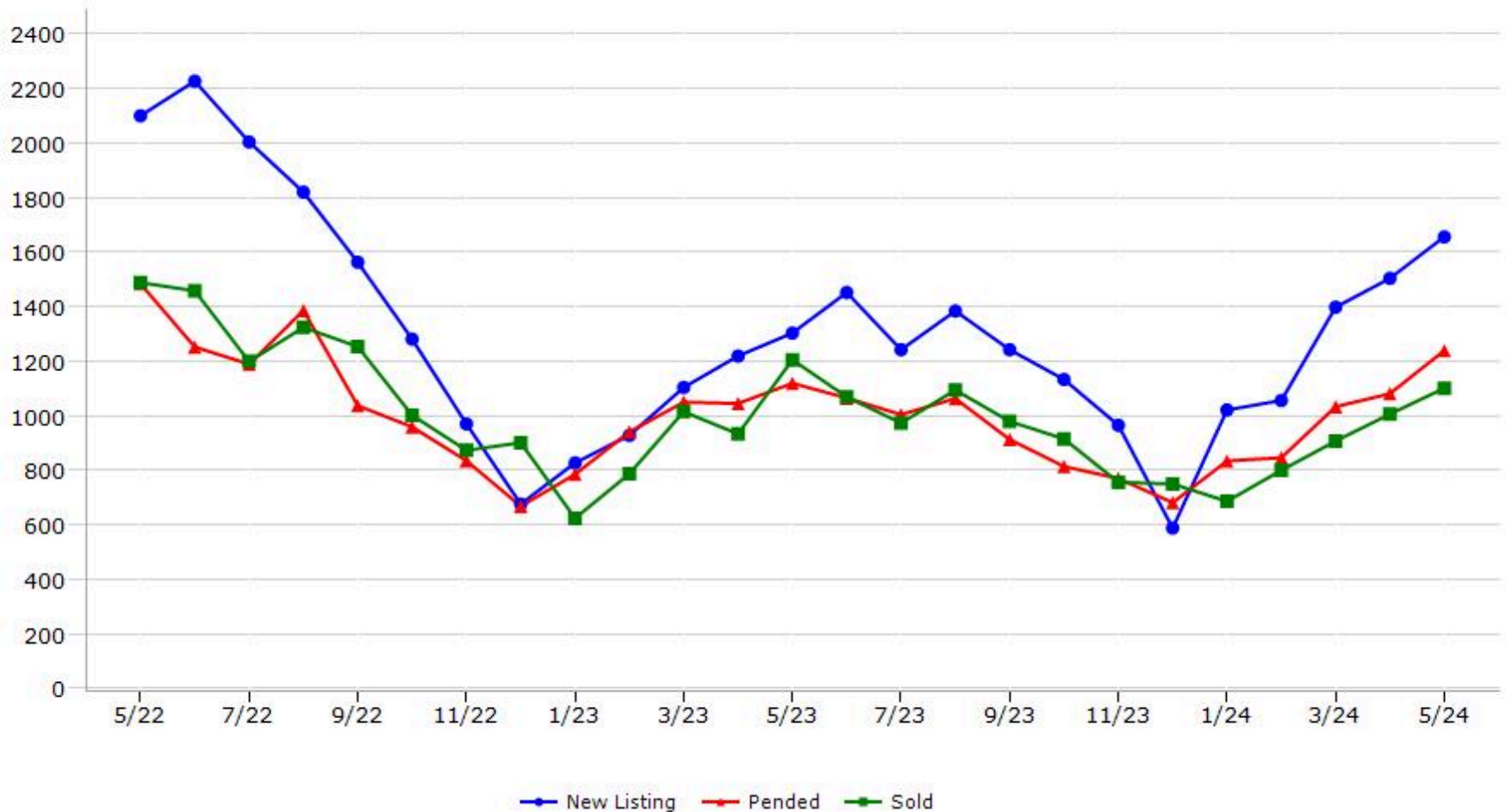
\*Data represents Residential Property class only.

\*Pended represents the number of properties that went into contract during the course of a calendar month.

# Trending Report: May 2022 - May 2024



## Sacramento County



Data provided by **MetroList** THE TRUE SOURCE. Powered by **TrendGraphix** YOUR HOME FOR REAL ESTATE DATA.

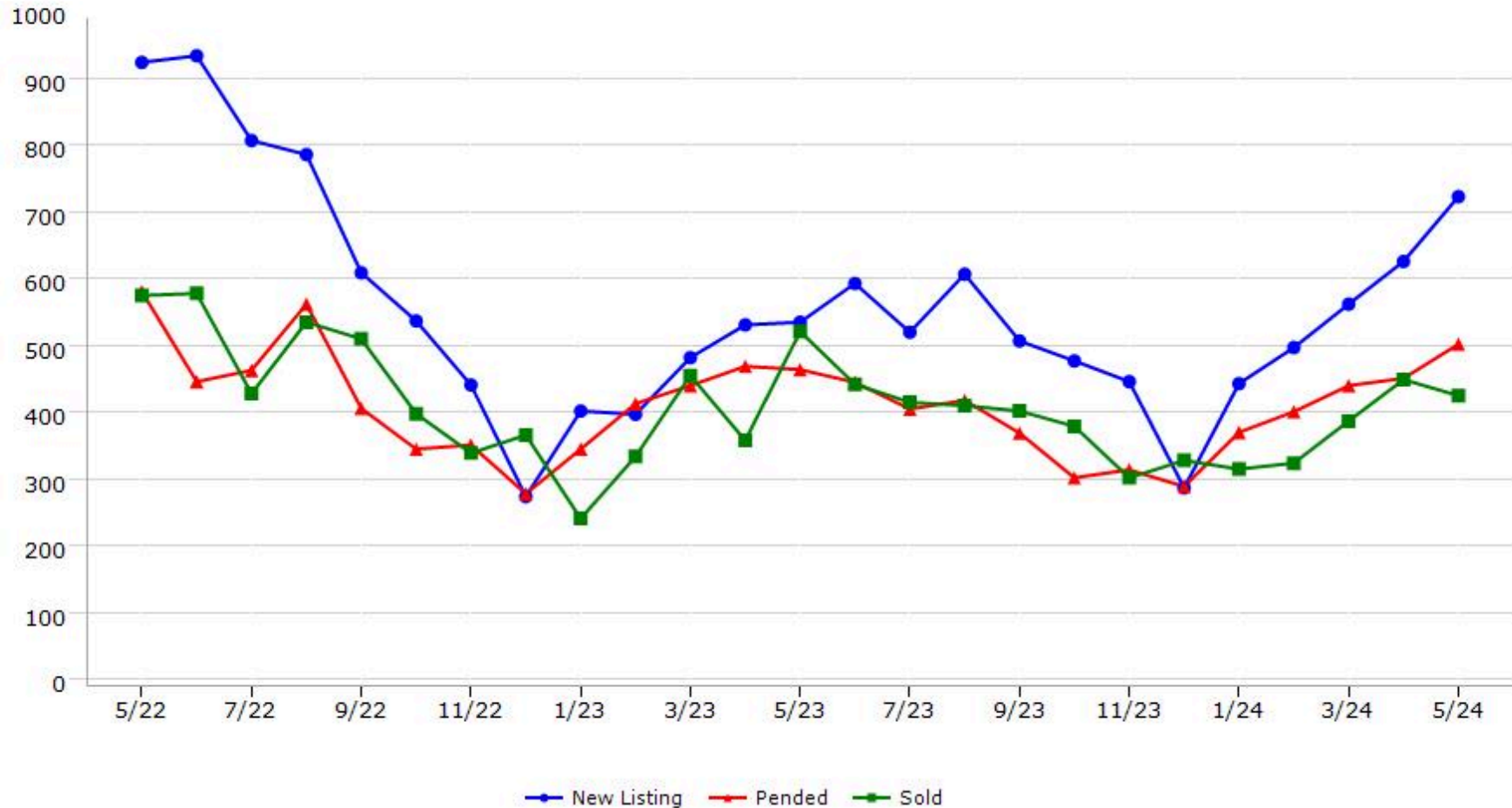
\*Data represents Residential Property class only.  
\*Pended represents the number of properties that went into contract during the course of a calendar month.

# Trending Report: May 2022 - May 2024



CALIFORNIA REAL ESTATE BROKERS, INC.

## San Joaquin County



Data provided by **MetroList** THE TRUE SOURCE. Powered by **TrendGraphix** YOUR HOME FOR REAL ESTATE DATA.

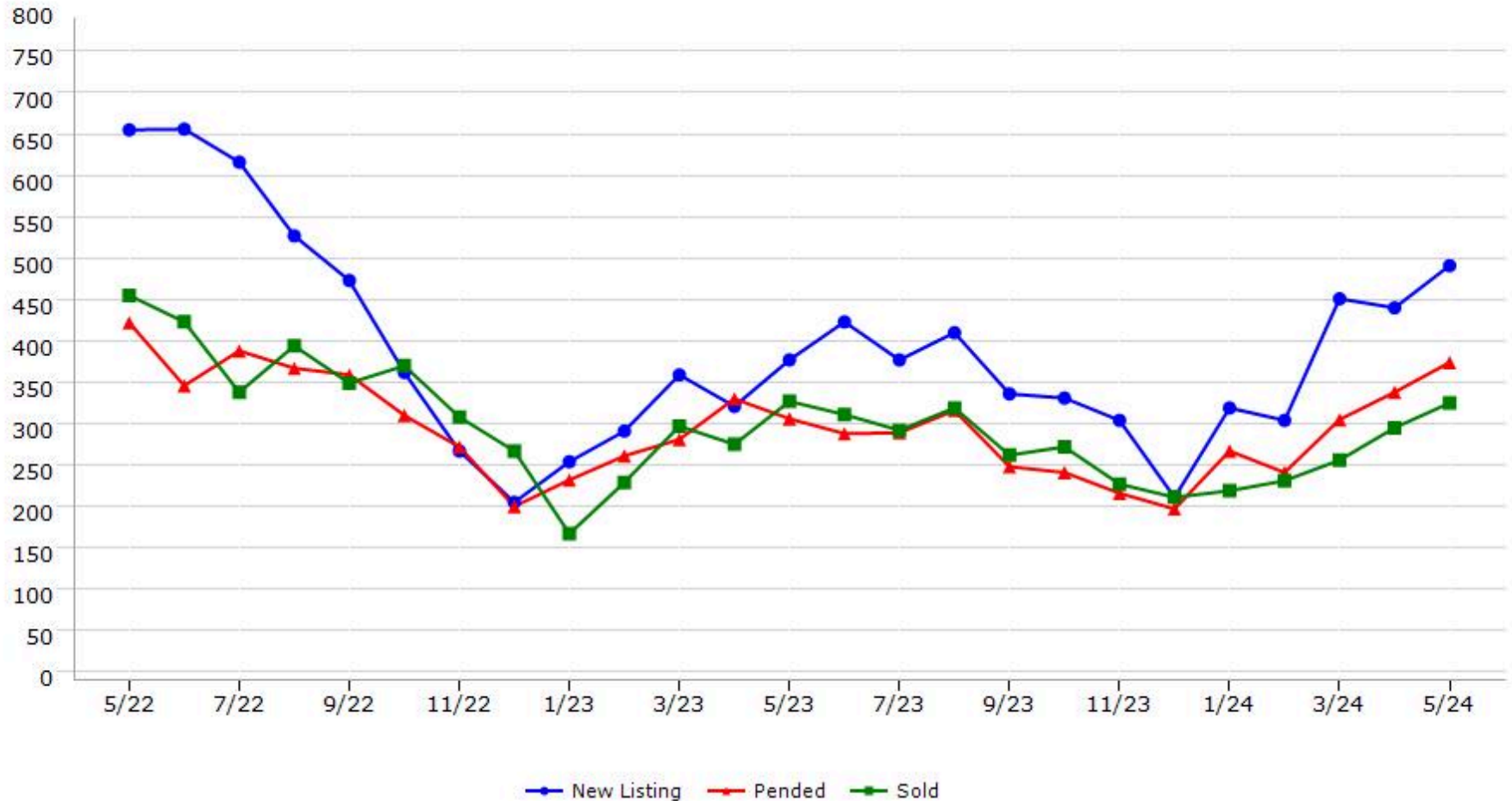
\*Data represents Residential Property class only.

\*Pended represents the number of properties that went into contract during the course of a calendar month.

# Trending Report: May 2022 - May 2024



## Stanislaus County



Data provided by **MetroList** THE TRUE SOURCE. Powered by **TrendGraphix** YOUR HOME FOR REAL ESTATE DATA.

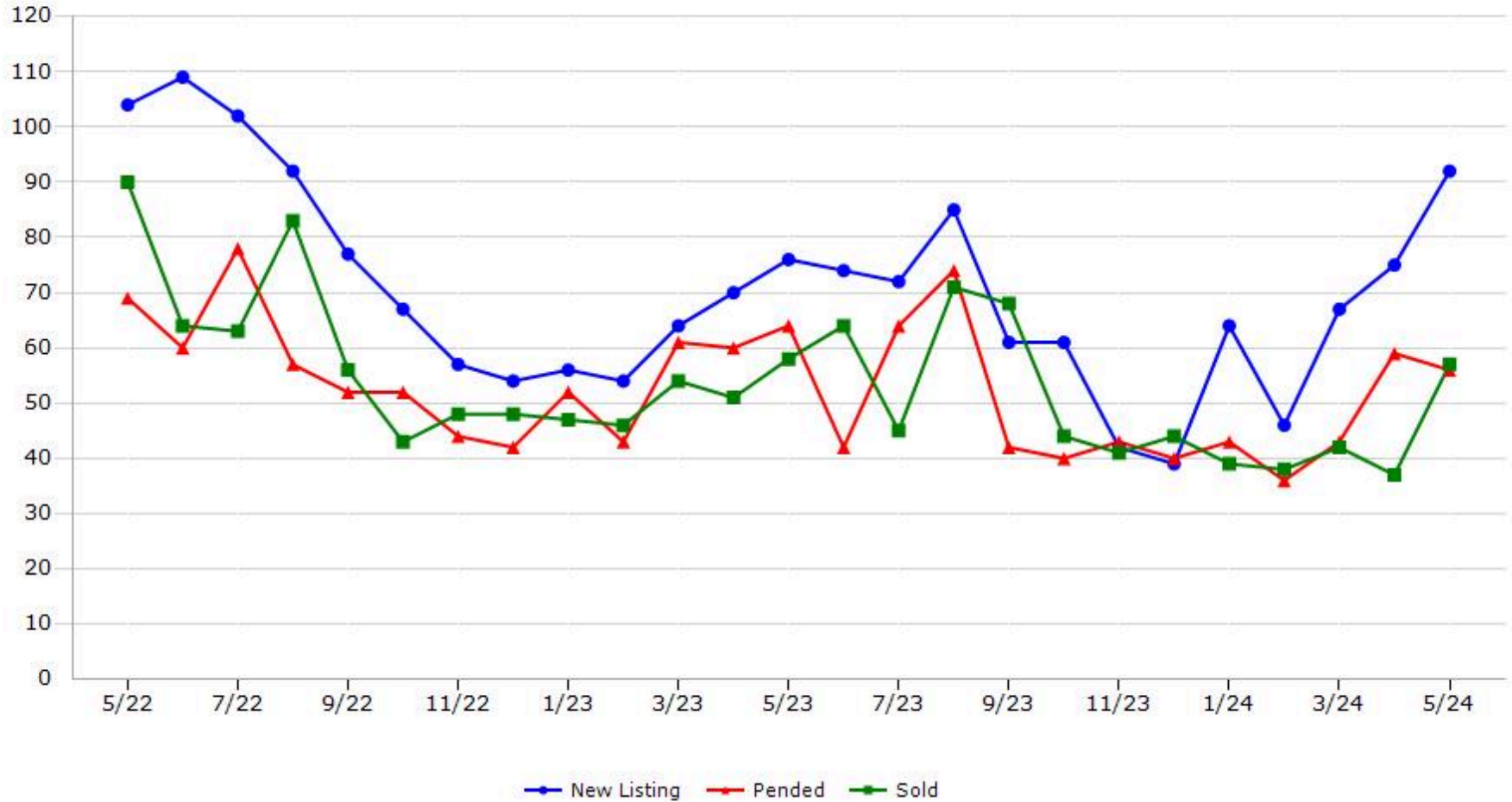
\*Data represents Residential Property class only.

\*Pended represents the number of properties that went into contract during the course of a calendar month.

# Trending Report: May 2022 - May 2024



## Sutter County



Data provided by **MetroList** THE TRUE SOURCE Powered by **TrendGraphix** YOUR HOME FOR REAL ESTATE DATA

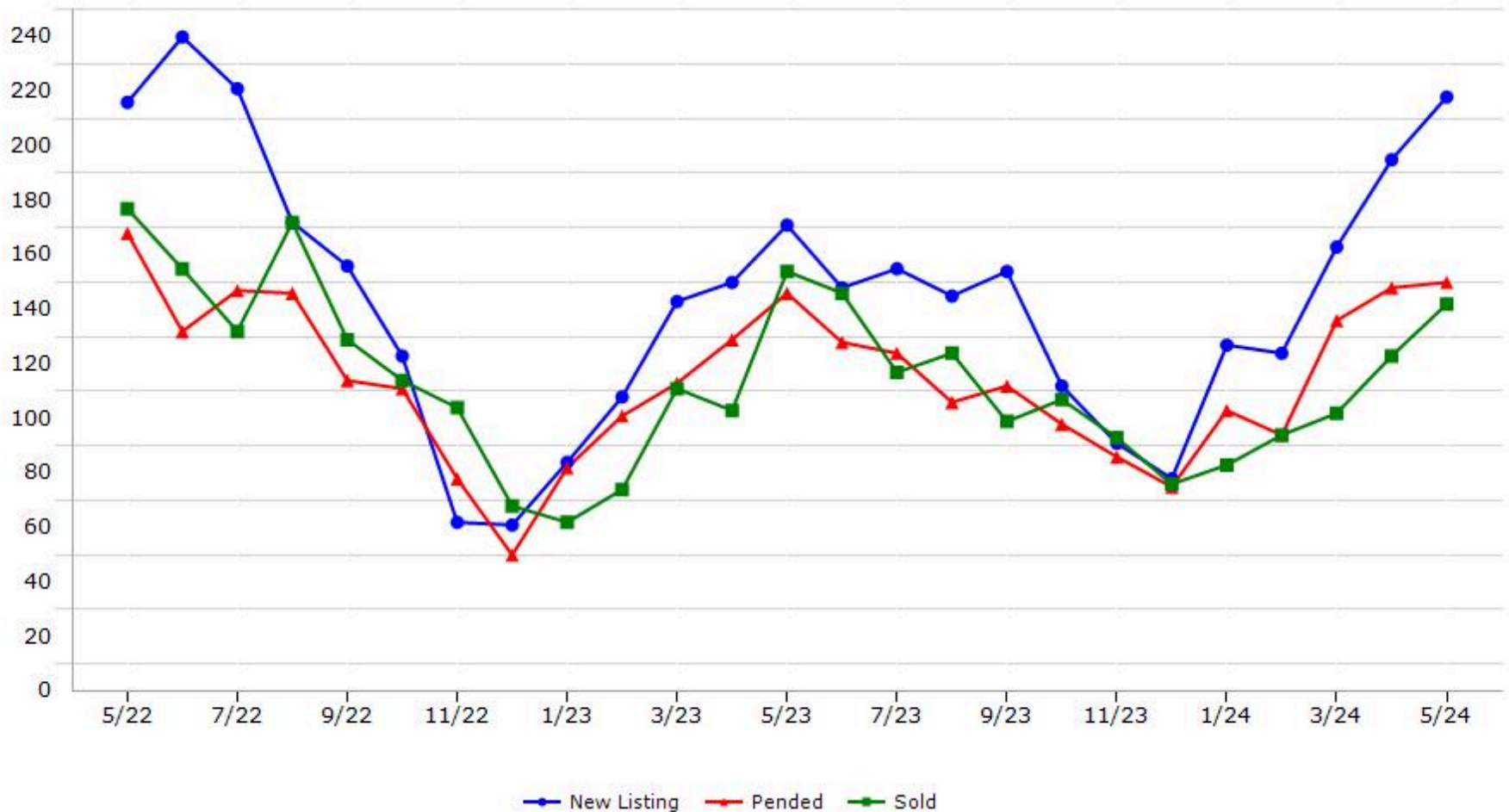
\*Data represents Residential Property class only.

\*Pended represents the number of properties that went into contract during the course of a calendar month.

# Trending Report: May 2022 - May 2024



## Yolo County



Data provided by **MetroList** THE TRUE SOURCE. Powered by **TrendGraphix** YOUR HOME FOR REAL ESTATE DATA.

\*Data represents Residential Property class only.  
\*Pended represents the number of properties that went into contract during the course of a calendar month.

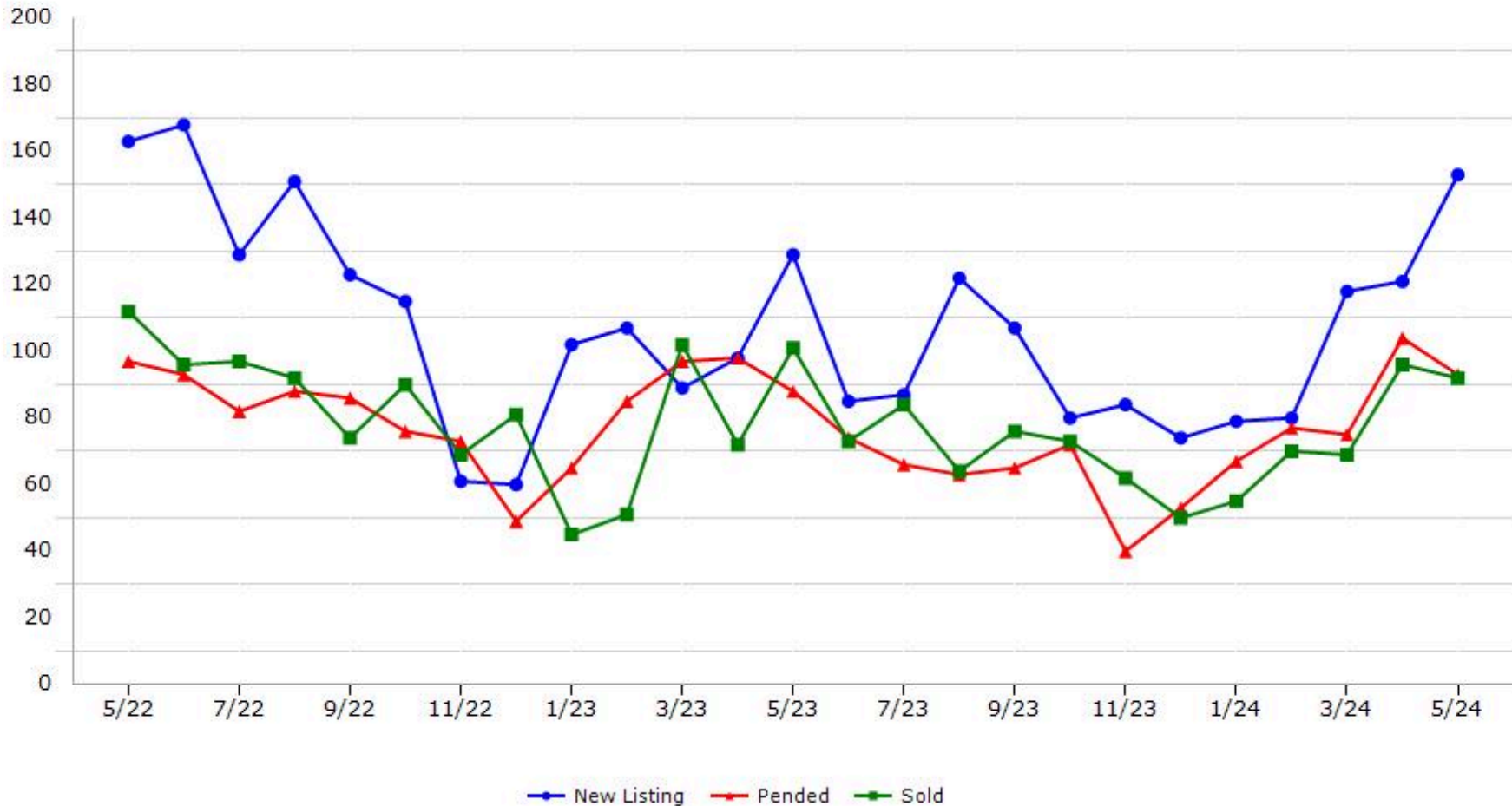


# Trending Report: May 2022 - May 2024



CALIFORNIA REAL ESTATE BROKERS, INC.

## Yuba County



Data provided by **MetroList** THE TRUE SOURCE. Powered by **TrendGraphix** YOUR HOME FOR REAL ESTATE DATA.

\*Data represents Residential Property class only.

\*Pended represents the number of properties that went into contract during the course of a calendar month.