

Monthly Market Report - February 2024



CALIFORNIA REAL ESTATE BROKERS, INC.

MetroList All Areas

Feb 2024 vs Jan 2024

New Listing

2910 3091 -6% ↓

Pended

2681 2511 7% ↑

Sold

2141 2023 6% ↑

Avg DOM

38 43 -12% ↓

Month of Inventory

1.5 1.6 -6% ↓

New Listing By County

Feb 2024 vs Jan 2024

Amador	68	49	39%	↑
Butte	35	27	30%	↑
Colusa	8	11	-27%	↓
El Dorado	192	195	-2%	↓
Merced	122	121	1%	↑
Nevada	89	108	-18%	↓
Placer	429	424	1%	↑
Sacramento	957	1084	-12%	↓
San Joaquin	478	463	3%	↑
Stanislaus	297	340	-13%	↓
Sutter	47	61	-23%	↓
Yolo	114	132	-14%	↓
Yuba	74	76	-3%	↓

Pended By County

Feb 2024 vs Jan 2024

Amador	43	43	0%	
Butte	34	14	143%	↑
Colusa	7	7	0%	
El Dorado	151	151	0%	
Merced	123	103	19%	↑
Nevada	85	84	1%	↑
Placer	367	371	-1%	↓
Sacramento	935	852	10%	↑
San Joaquin	441	385	15%	↑
Stanislaus	273	285	-4%	↓
Sutter	37	45	-18%	↓
Yolo	99	103	-4%	↓
Yuba	86	68	26%	↑

Sold By County

Feb 2024 vs Jan 2024

Amador	35	39	-10%	↓
Butte	11	15	-27%	↓
Colusa	5	5	0%	
El Dorado	127	106	20%	↑
Merced	98	95	3%	↑
Nevada	71	80	-11%	↓
Placer	306	264	16%	↑
Sacramento	765	695	10%	↑
San Joaquin	306	321	-5%	↓
Stanislaus	229	227	1%	↑
Sutter	36	39	-8%	↓
Yolo	92	83	11%	↑
Yuba	60	54	11%	↑

Data provided by **MetroList**[®]
THE TRUE SOURCE

Powered by **TrendGraphix**
YOUR HOME FOR REAL ESTATE DATA

*Data represents Residential Property class only.

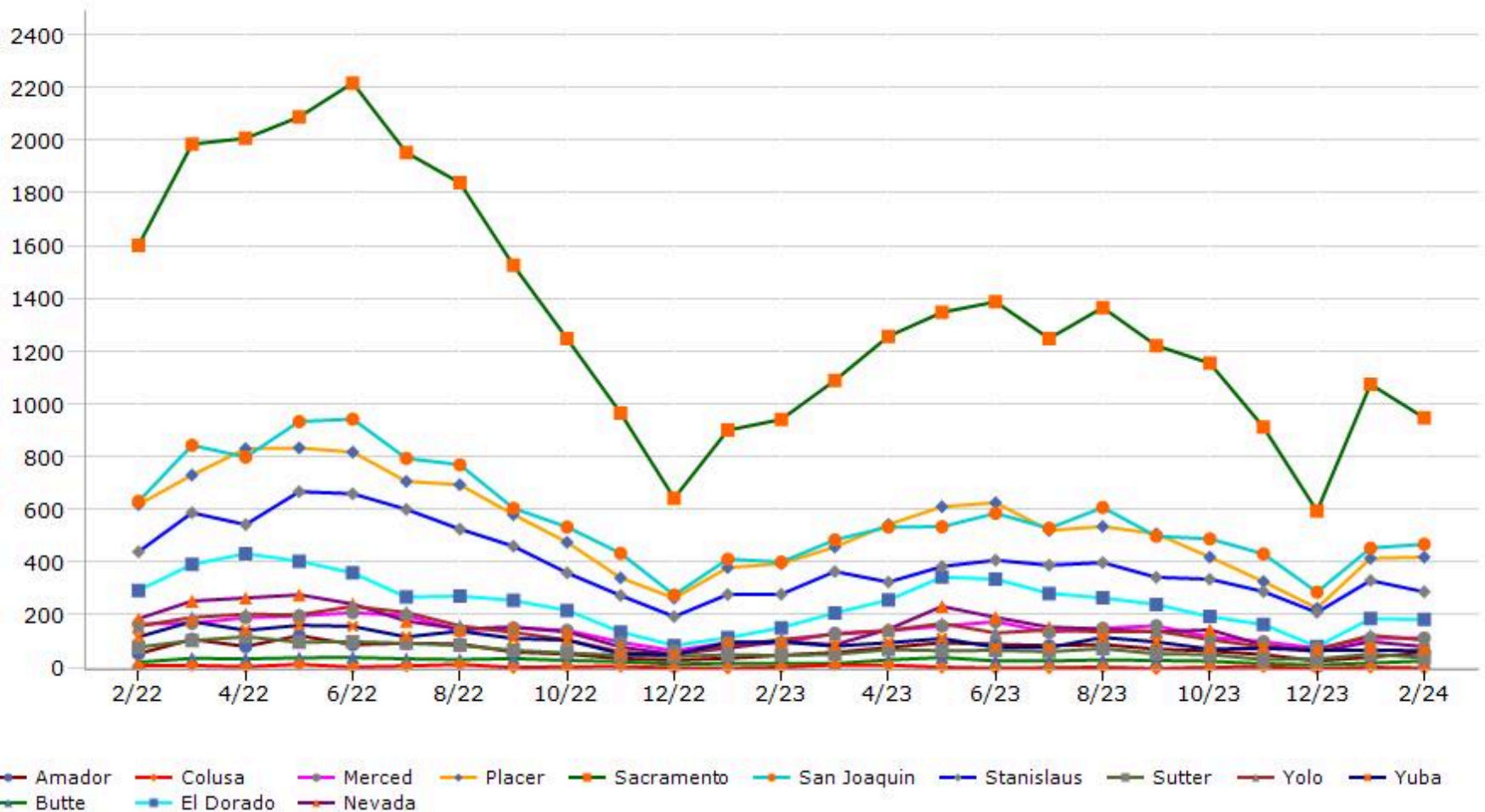
*Pended represents the number of properties that went into contract during the course of a calendar month.

*Month of Inventory is calculated by dividing the number of homes that went into contract in a given calendar month into the number of homes that were active at the end of a given calendar month.

Trending Report: Feb 2022 - Feb 2024



New Listing



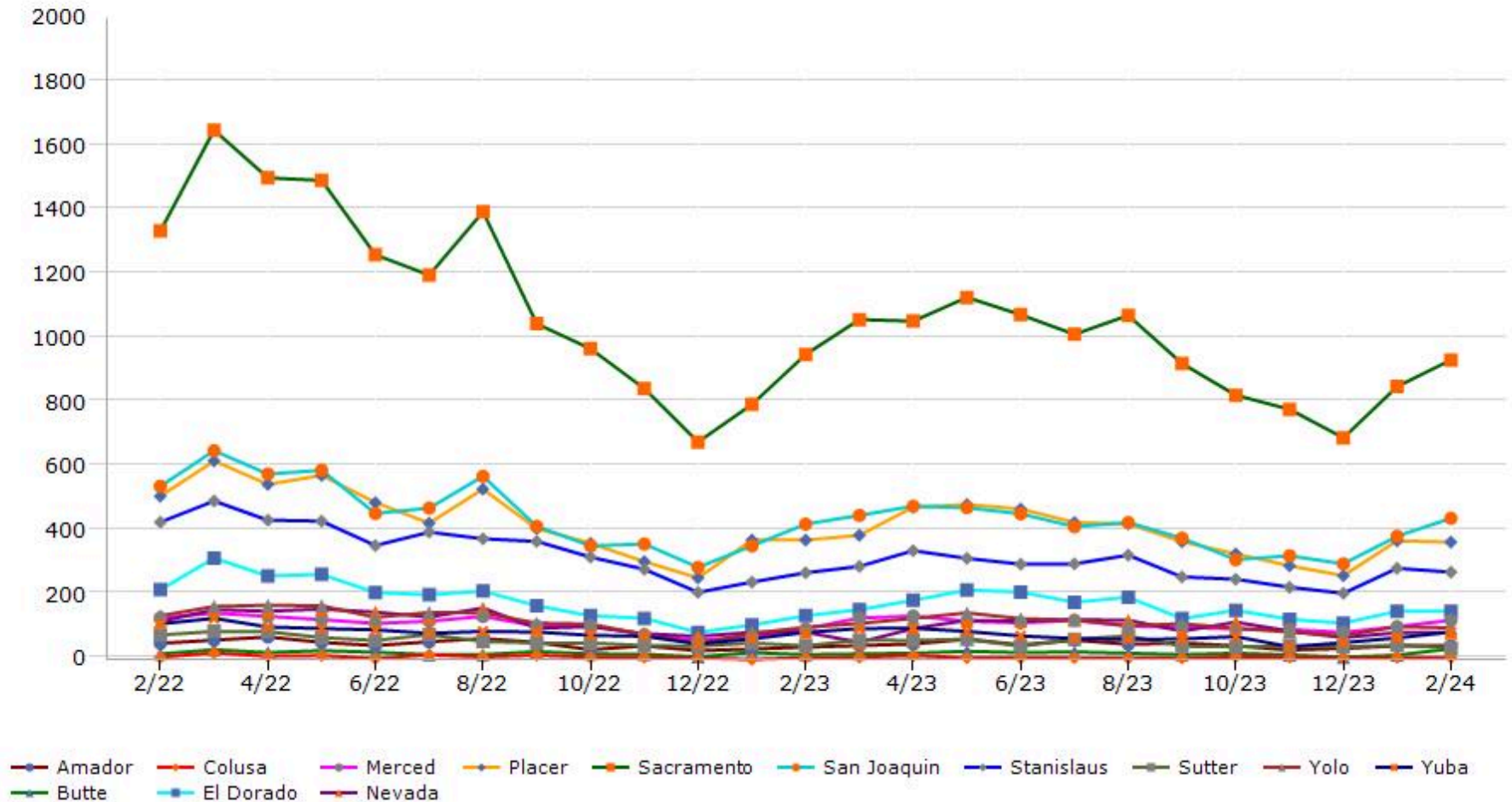
Data provided by **MetroList** THE TRUE SOURCE | Powered by **TrendGraphix** YOUR HOME FOR REAL ESTATE DATA

*Data represents Residential Property class only.

Trending Report: Feb 2022 - Feb 2024



Pended



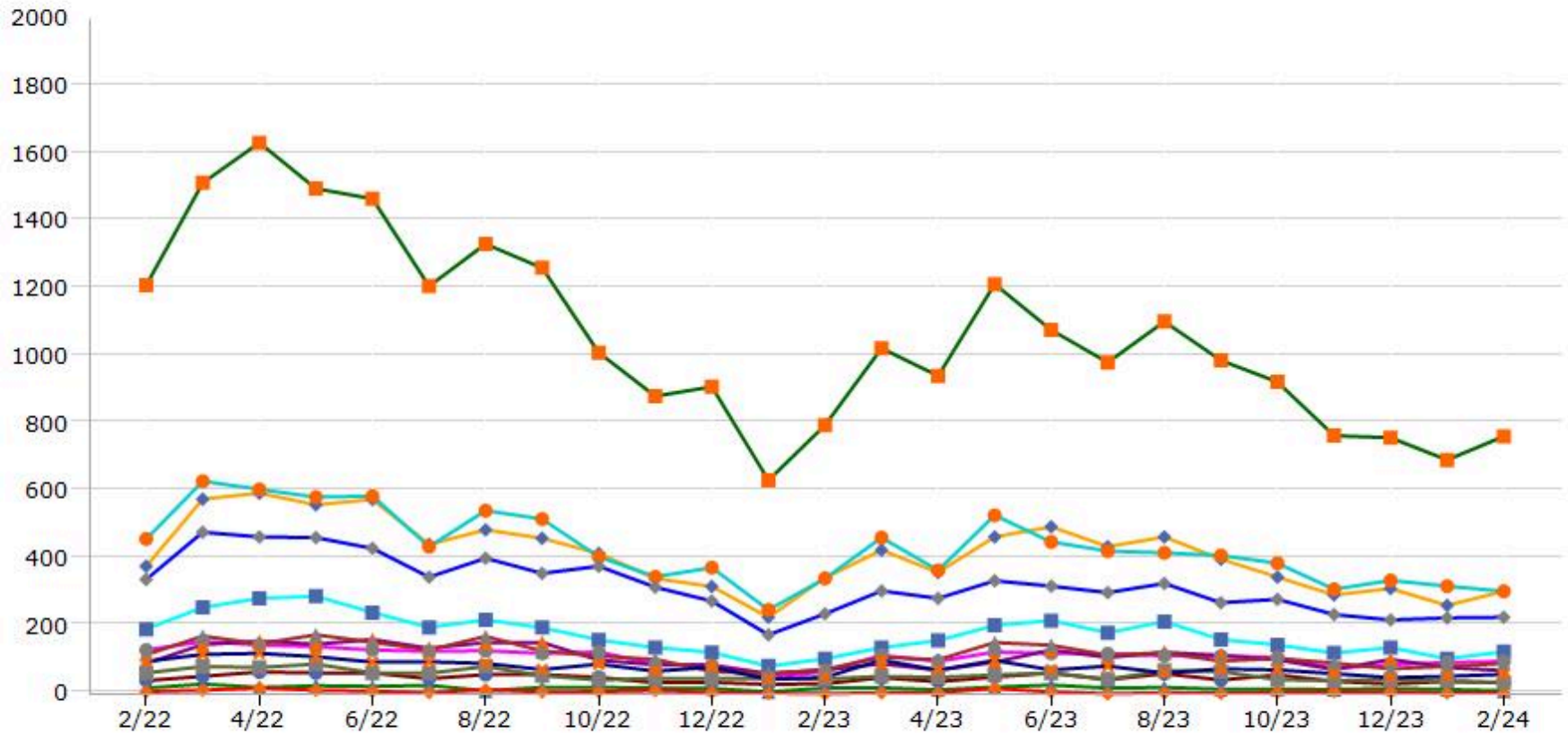
Data provided by **MetroList** THE TRUE SOURCE. Powered by **TrendGraphix** YOUR HOME FOR REAL ESTATE DATA.

*Data represents Residential Property class only.
 *Pended represents the number of properties that went into contract during the course of a calendar month.

Trending Report: Feb 2022 - Feb 2024



Sold



- Amador
- Colusa
- Merced
- Placer
- Sacramento
- San Joaquin
- Stanislaus
- Sutter
- Yolo
- Yuba
- Butte
- El Dorado
- Nevada

Data provided by **MetroList**
THE TRUE SOURCE

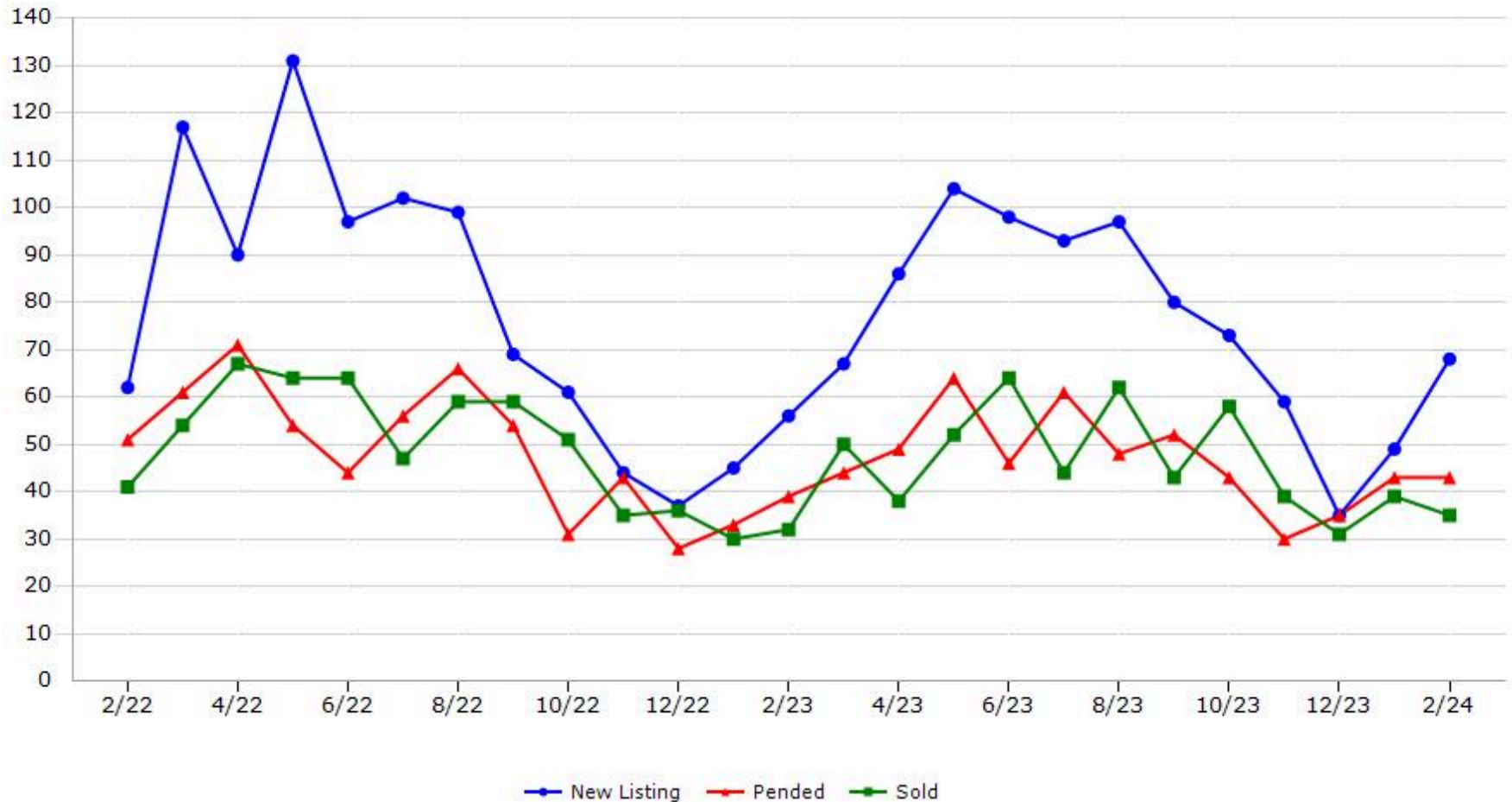
Powered by **TrendGraphix**
YOUR HOME FOR REAL ESTATE DATA

*Data represents Residential Property class only.

Trending Report: Feb 2022 - Feb 2024



Amador County



Data provided by **MetroList** THE TRUE SOURCE Powered by **TrendGraphix** YOUR HOME FOR REAL ESTATE DATA

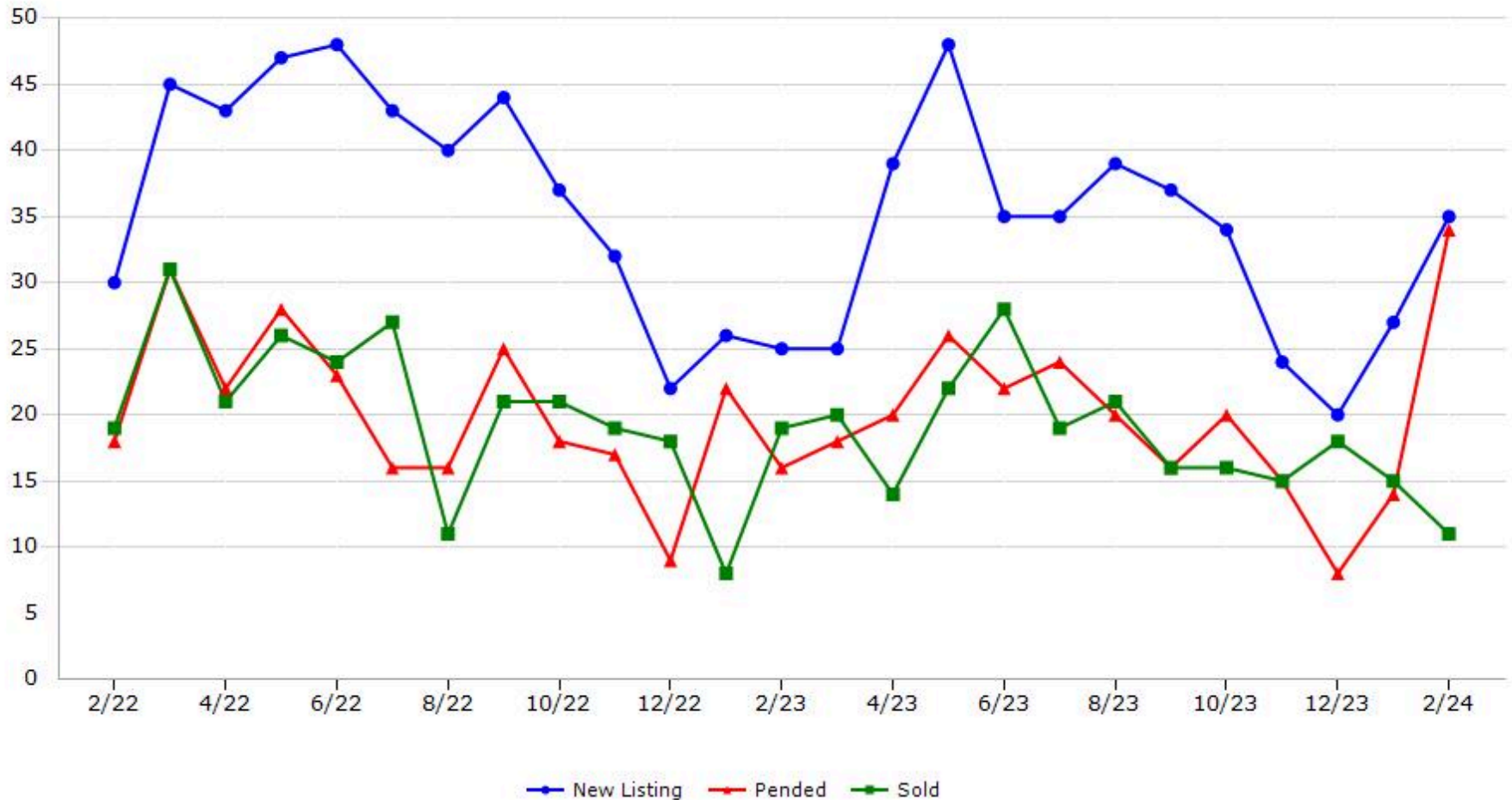
*Data represents Residential Property class only.

*Pended represents the number of properties that went into contract during the course of a calendar month.

Trending Report: Feb 2022 - Feb 2024



Butte County



Data provided by **MetroList** THE TRUE SOURCE. Powered by **TrendGraphix** YOUR HOME FOR REAL ESTATE DATA.

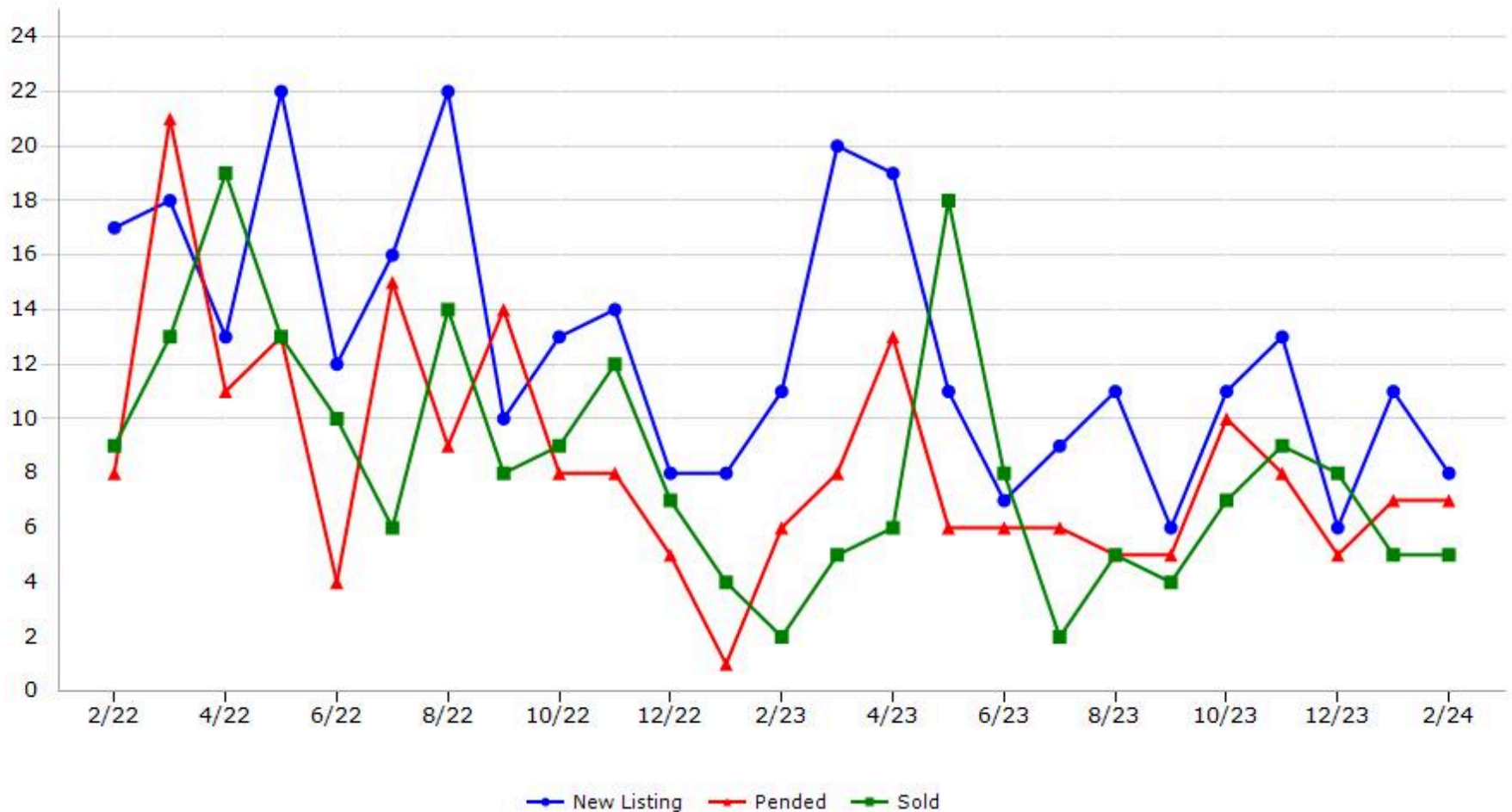
*Data represents Residential Property class only.

*Pended represents the number of properties that went into contract during the course of a calendar month.

Trending Report: Feb 2022 - Feb 2024



Colusa County



Data provided by **MetroList** THE TRUE SOURCE Powered by **TrendGraphix** YOUR HOME FOR REAL ESTATE DATA

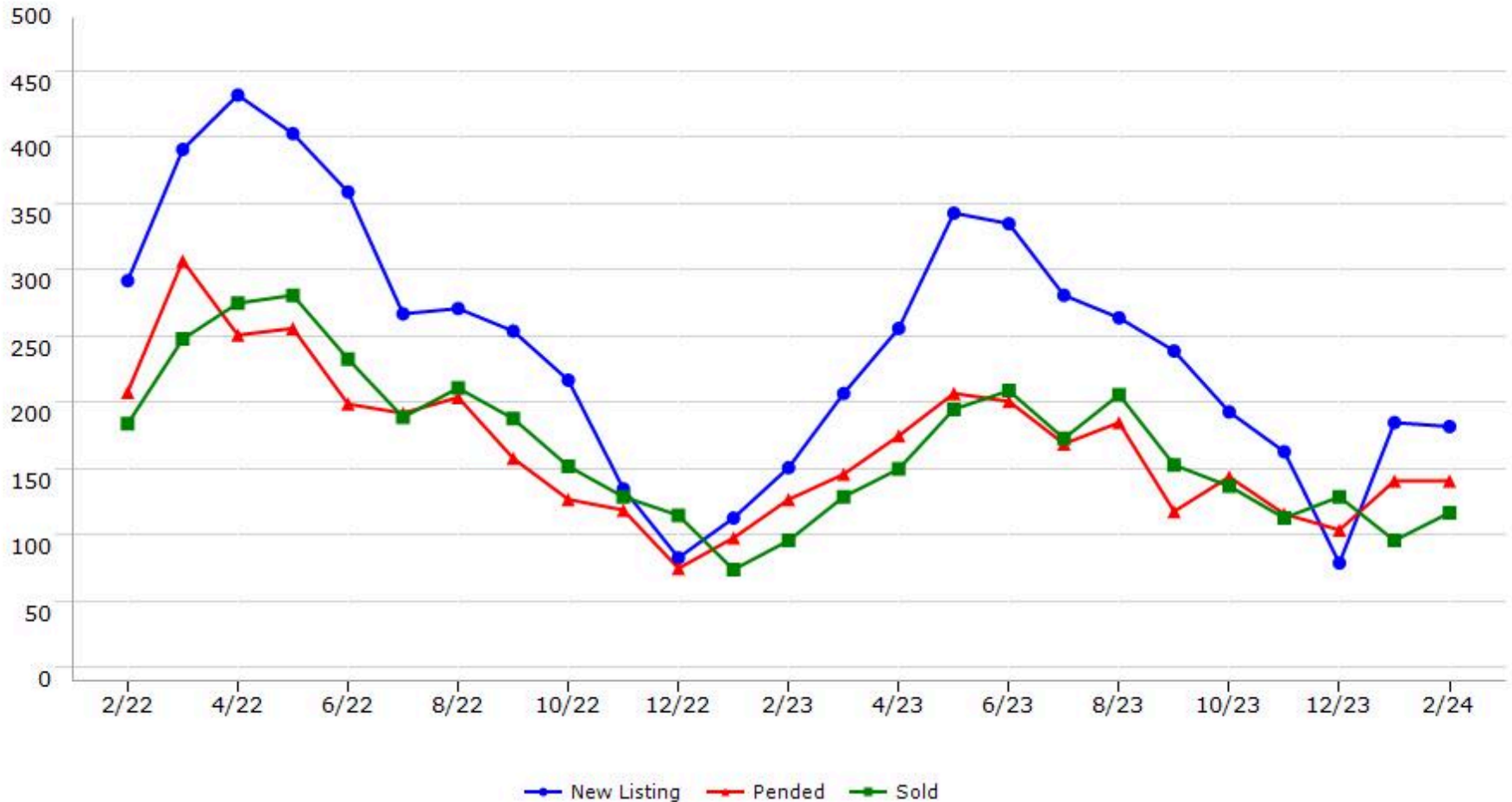
*Data represents Residential Property class only.

*Pended represents the number of properties that went into contract during the course of a calendar month.

Trending Report: Feb 2022 - Feb 2024



El Dorado County



Data provided by **MetroList** THE TRUE SOURCE Powered by **TrendGraphix** YOUR HOME FOR REAL ESTATE DATA

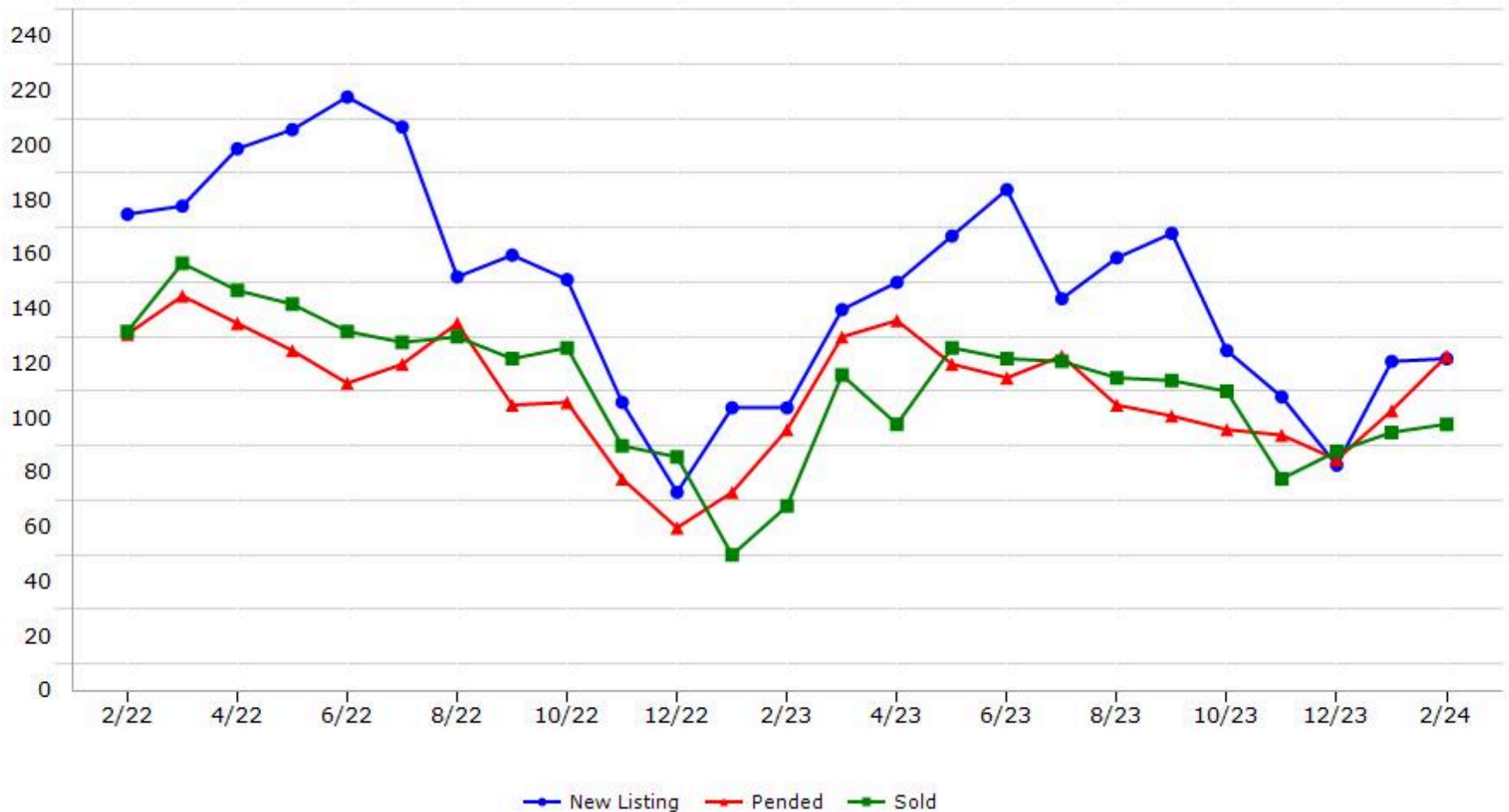
*Data represents Residential Property class only.

*Pended represents the number of properties that went into contract during the course of a calendar month.

Trending Report: Feb 2022 - Feb 2024



Merced County



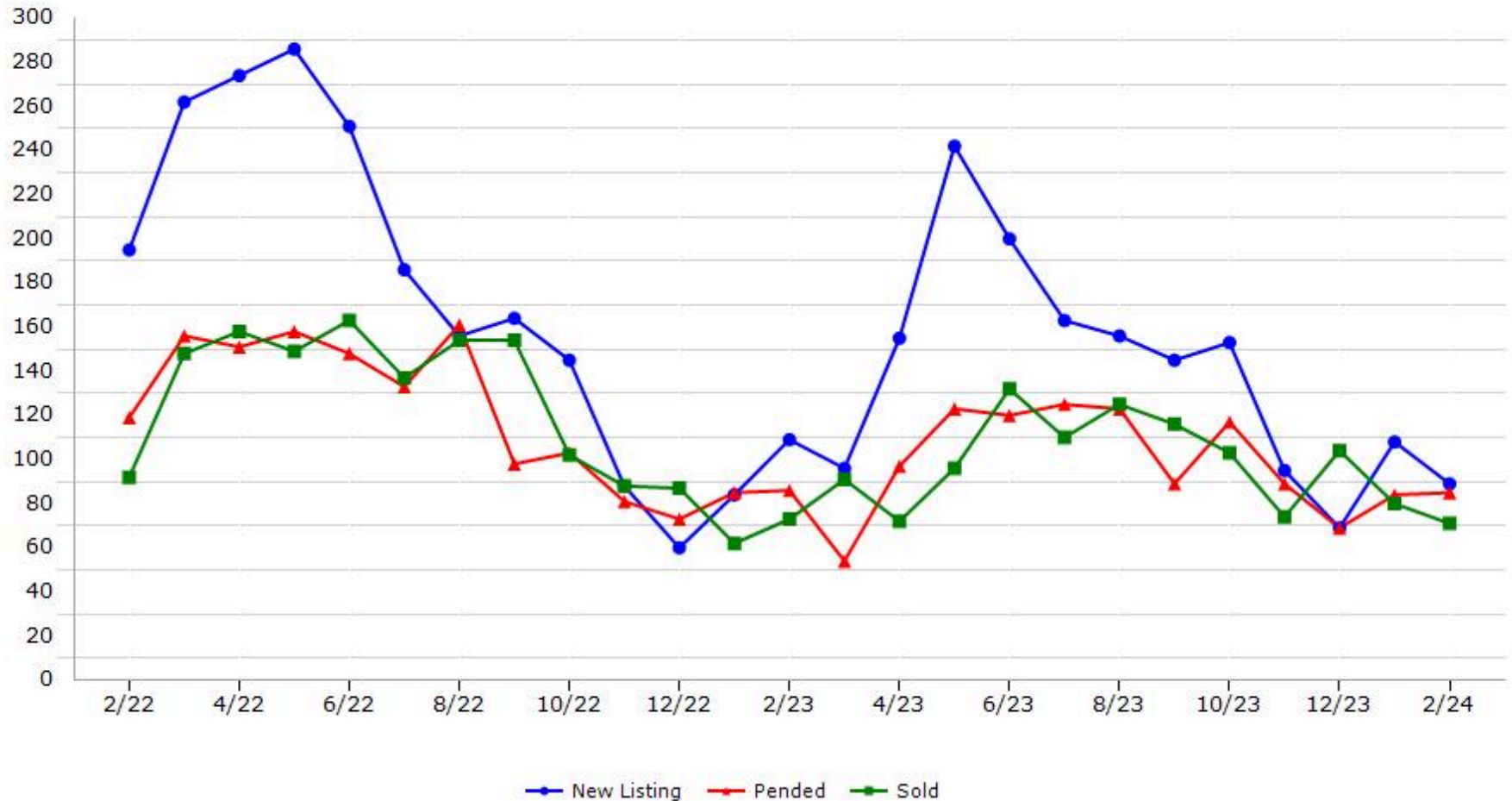
Data provided by **MetroList** THE TRUE SOURCE Powered by **TrendGraphix** YOUR HOME FOR REAL ESTATE DATA

*Data represents Residential Property class only.
*Pended represents the number of properties that went into contract during the course of a calendar month.

Trending Report: Feb 2022 - Feb 2024



Nevada County



Data provided by **MetroList** THE TRUE SOURCE Powered by **TrendGraphix** YOUR HOME FOR REAL ESTATE DATA

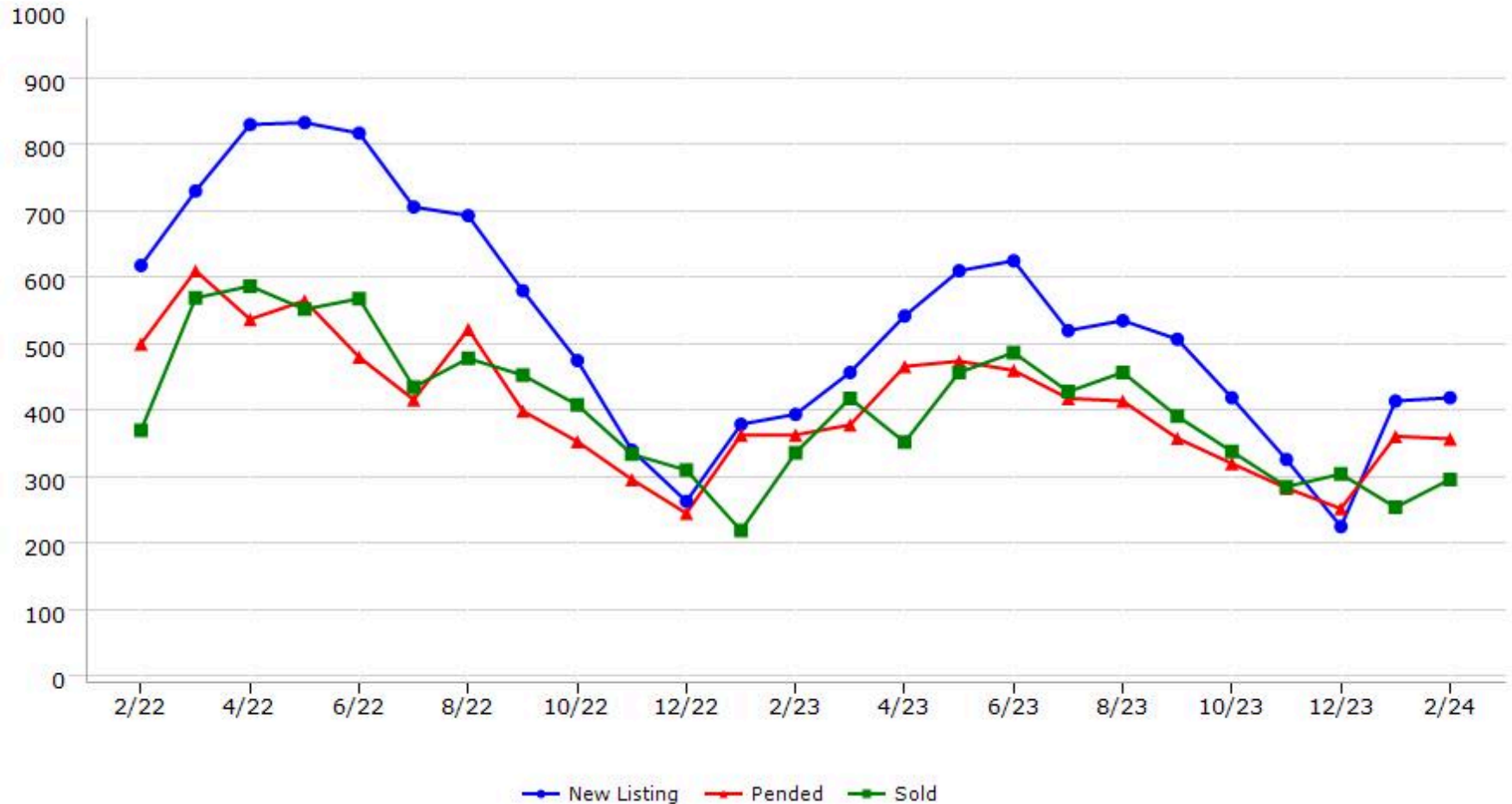
*Data represents Residential Property class only.

*Pended represents the number of properties that went into contract during the course of a calendar month.

Trending Report: Feb 2022 - Feb 2024



Placer County



Data provided by **MetroList** THE TRUE SOURCE. Powered by **TrendGraphix** YOUR HOME FOR REAL ESTATE DATA.

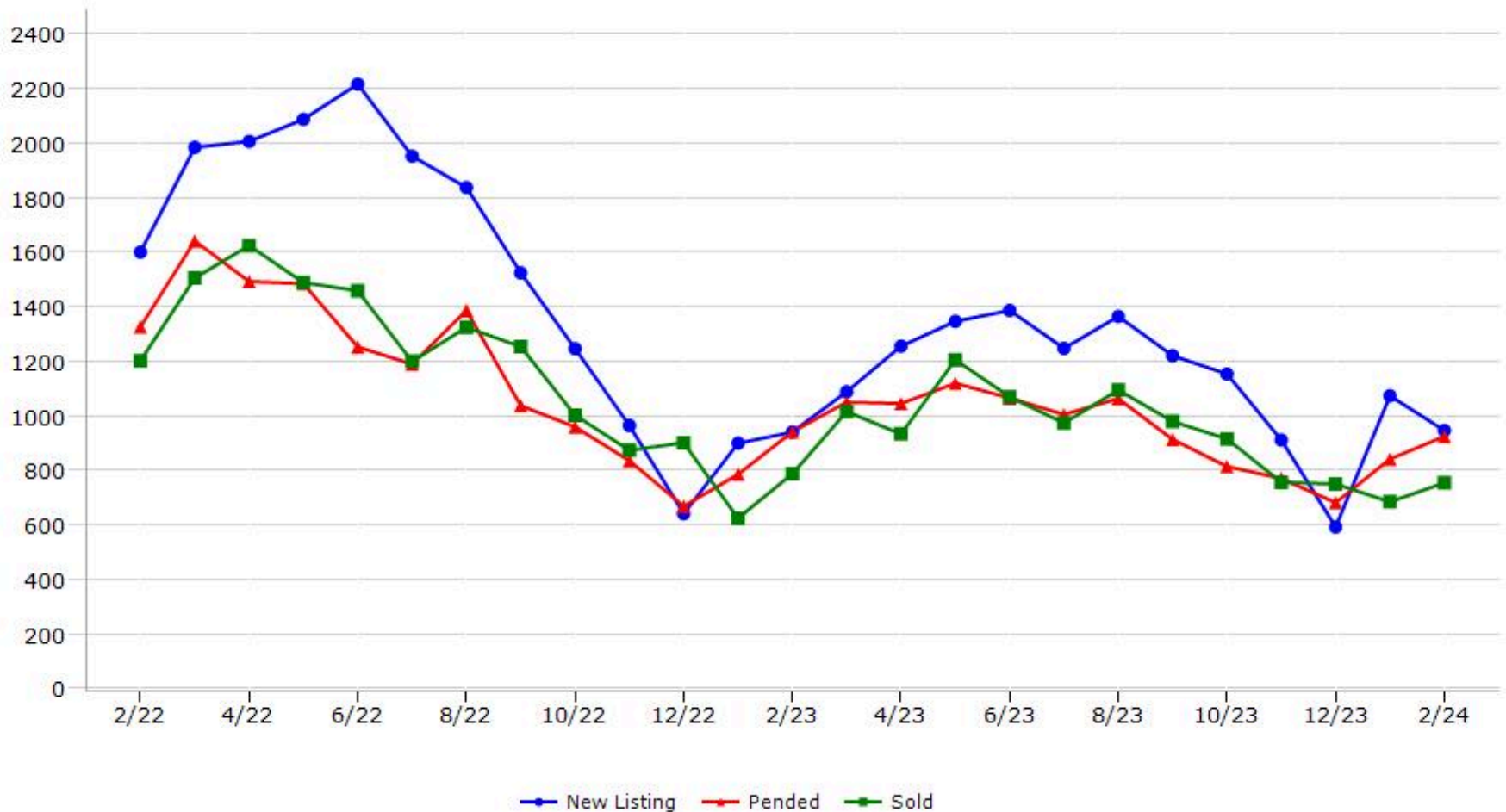
*Data represents Residential Property class only.

*Pended represents the number of properties that went into contract during the course of a calendar month.

Trending Report: Feb 2022 - Feb 2024



Sacramento County



Data provided by **MetroList** THE TRUE SOURCE Powered by **TrendGraphix** YOUR HOME FOR REAL ESTATE DATA

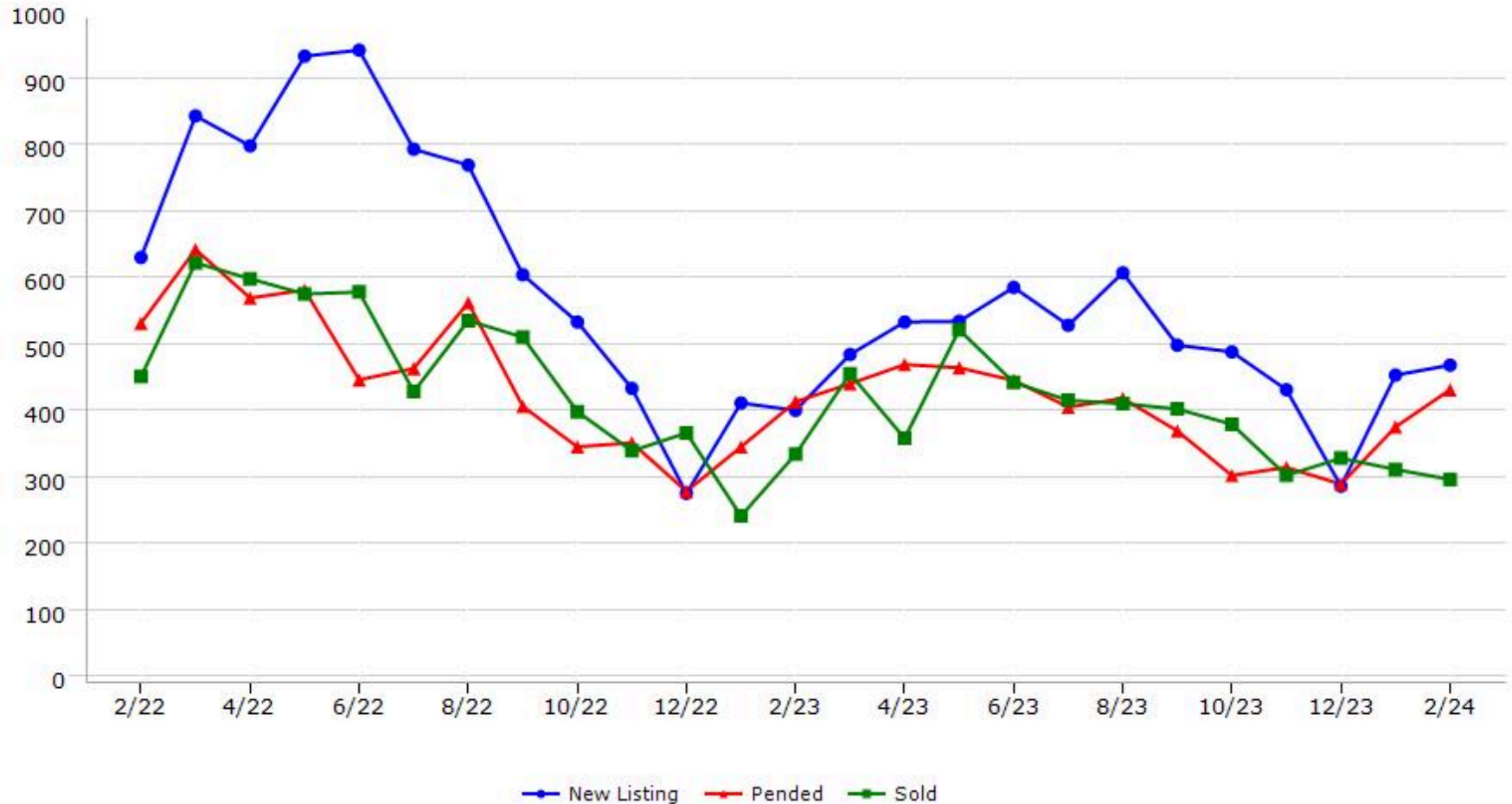
*Data represents Residential Property class only.

*Pended represents the number of properties that went into contract during the course of a calendar month.

Trending Report: Feb 2022 - Feb 2024



San Joaquin County



Data provided by **MetroList** THE TRUE SOURCE Powered by **TrendGraphix** YOUR HOME FOR REAL ESTATE DATA

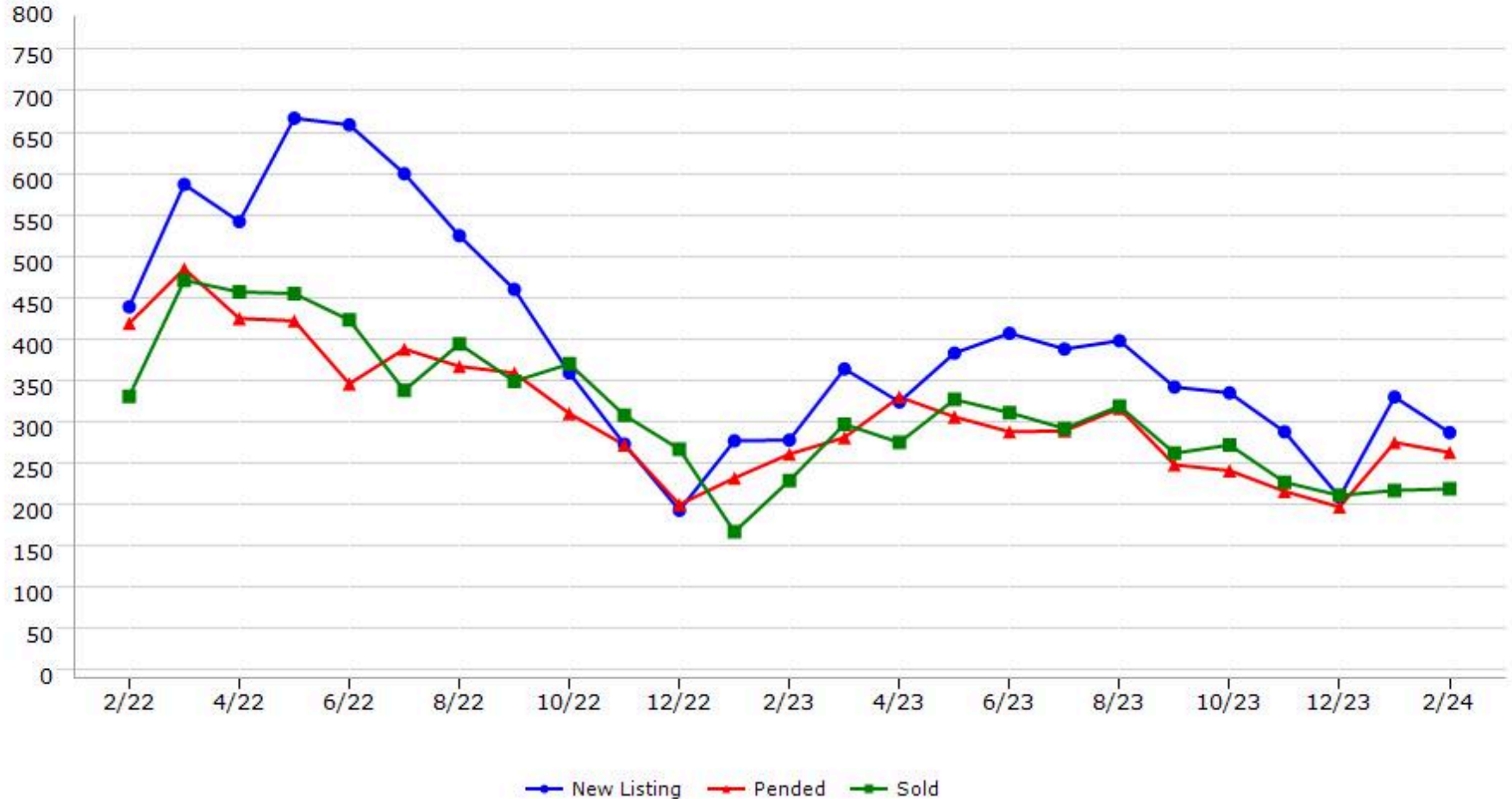
*Data represents Residential Property class only.

*Pended represents the number of properties that went into contract during the course of a calendar month.

Trending Report: Feb 2022 - Feb 2024



Stanislaus County



Data provided by **MetroList** THE TRUE SOURCE. Powered by **TrendGraphix** YOUR HOME FOR REAL ESTATE DATA.

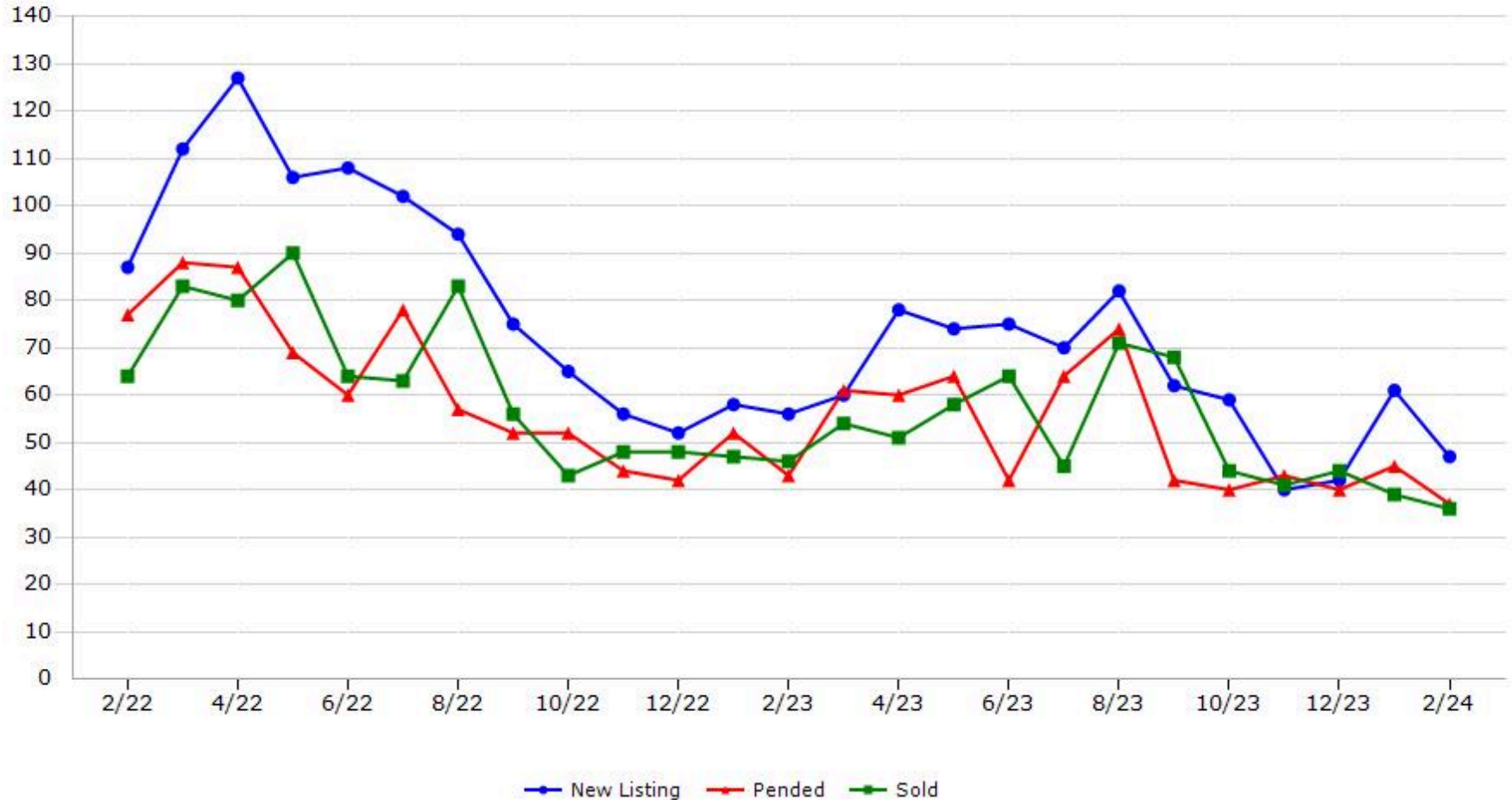
*Data represents Residential Property class only.

*Pended represents the number of properties that went into contract during the course of a calendar month.

Trending Report: Feb 2022 - Feb 2024



Sutter County



Data provided by **MetroList** THE TRUE SOURCE Powered by **TrendGraphix** YOUR HOME FOR REAL ESTATE DATA

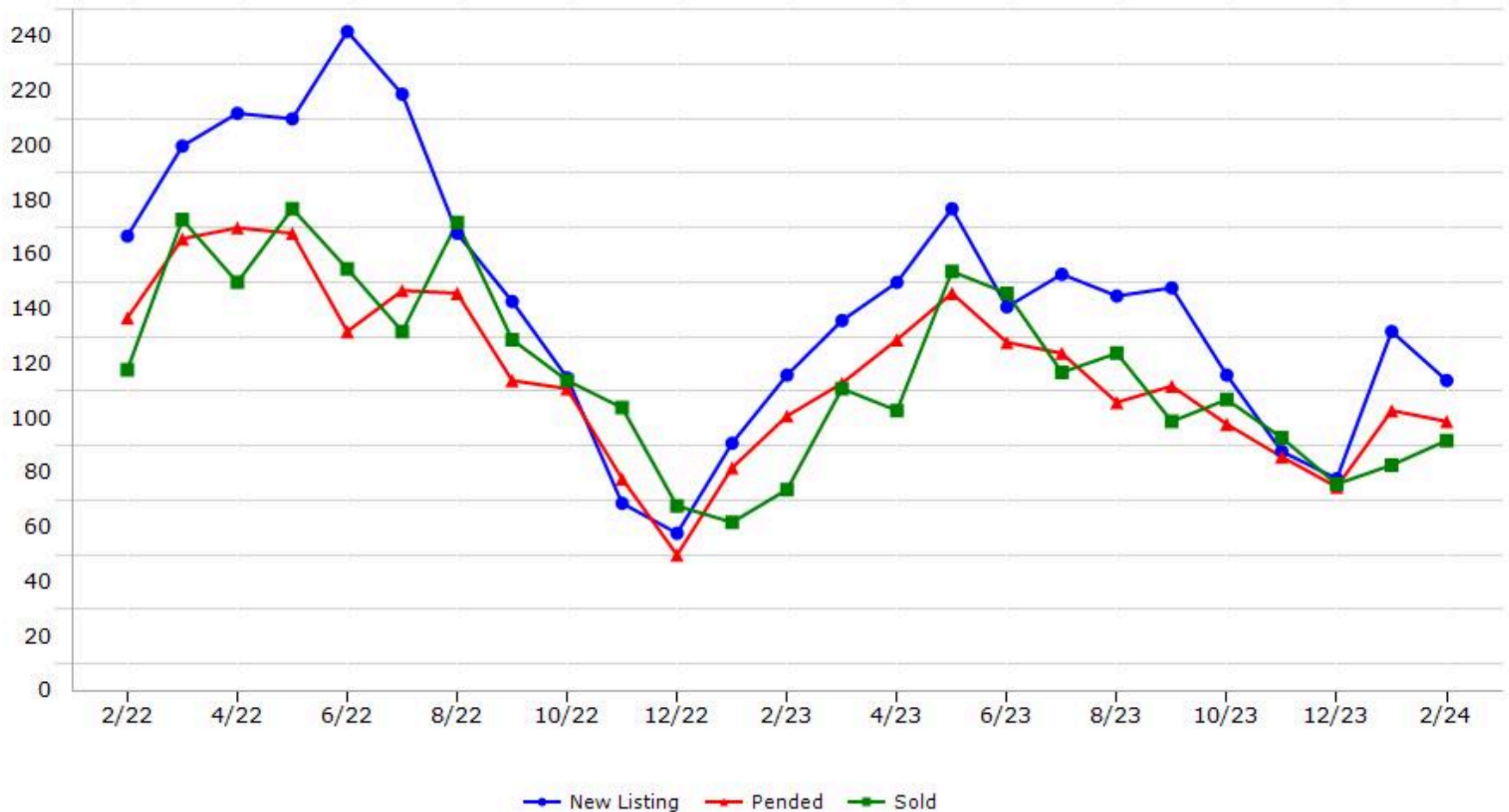
*Data represents Residential Property class only.

*Pended represents the number of properties that went into contract during the course of a calendar month.

Trending Report: Feb 2022 - Feb 2024



Yolo County



Data provided by **MetroList** THE TRUE SOURCE Powered by **TrendGraphix** YOUR HOME FOR REAL ESTATE DATA

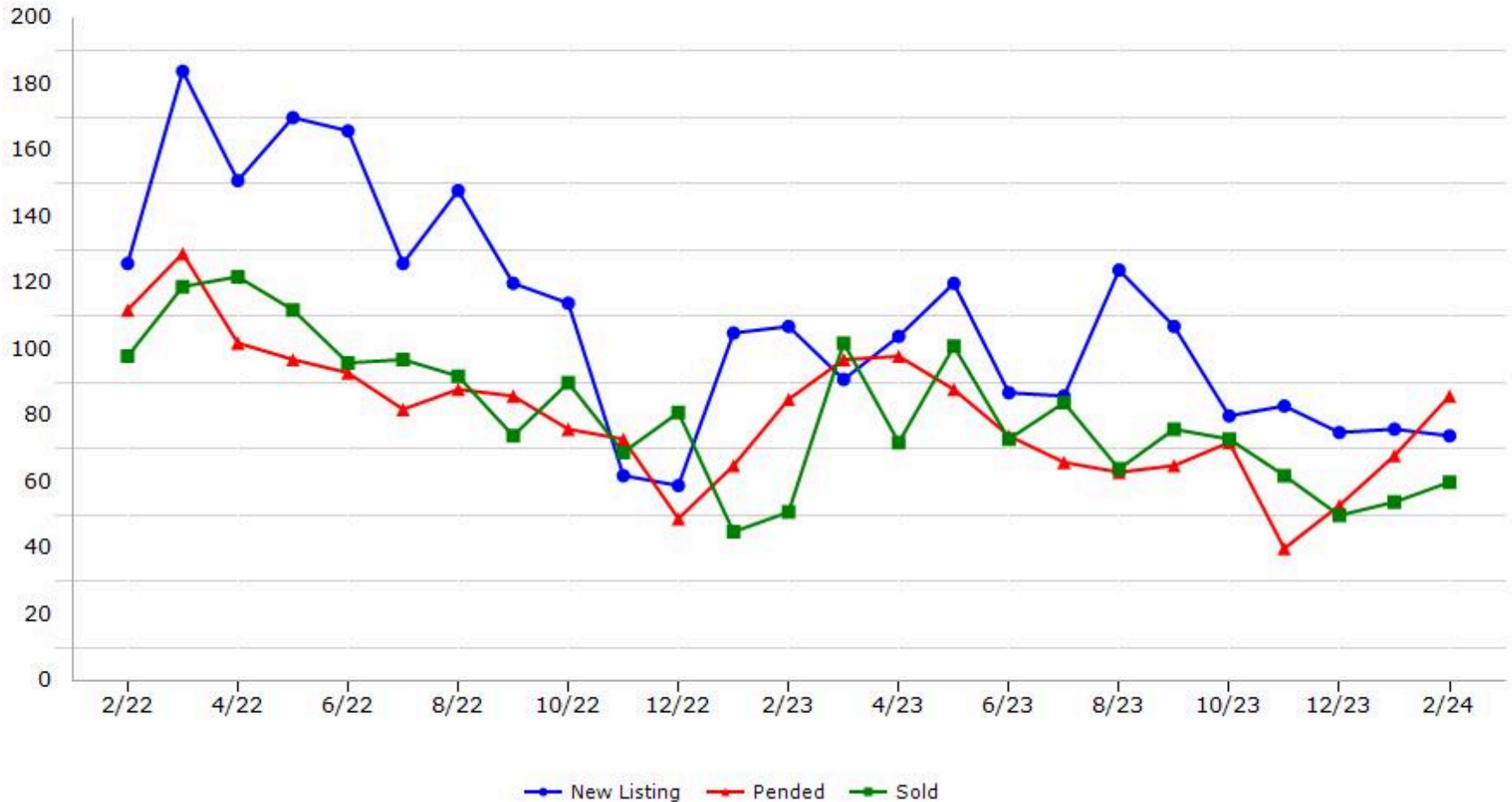
*Data represents Residential Property class only.

*Pended represents the number of properties that went into contract during the course of a calendar month.

Trending Report: Feb 2022 - Feb 2024



Yuba County



Data provided by **MetroList** THE TRUE SOURCE. Powered by **TrendGraphix** YOUR HOME FOR REAL ESTATE DATA.

*Data represents Residential Property class only.
*Pended represents the number of properties that went into contract during the course of a calendar month.