

# Monthly Market Report - January 2024



CALIFORNIA REAL ESTATE BROKERS, INC.

## MetroList All Areas

Jan 2024 vs Dec 2023

### New Listing

2920 1826 60% ↑

### Pended

2633 1960 34% ↑

### Sold

1938 2180 -11% ↓

### Avg DOM

42 36 17% ↑

### Month of Inventory

1.5 2.2 -32% ↓

## New Listing By County

Jan 2024 vs Dec 2023

Amador	46	34	35%	↑
Butte	26	19	37%	↑
Colusa	11	6	83%	↑
El Dorado	186	88	111%	↑
Merced	120	82	46%	↑
Nevada	102	67	52%	↑
Placer	383	232	65%	↑
Sacramento	1017	592	72%	↑
San Joaquin	441	295	49%	↑
Stanislaus	330	219	51%	↑
Sutter	60	42	43%	↑
Yolo	125	75	67%	↑
Yuba	73	75	-3%	↓

## Pended By County

Jan 2024 vs Dec 2023

Amador	44	35	26%	↑
Butte	17	10	70%	↑
Colusa	6	5	20%	↑
El Dorado	160	113	42%	↑
Merced	111	83	34%	↑
Nevada	88	67	31%	↑
Placer	386	265	46%	↑
Sacramento	884	698	27%	↑
San Joaquin	406	302	34%	↑
Stanislaus	298	209	43%	↑
Sutter	48	40	20%	↑
Yolo	106	75	41%	↑
Yuba	79	59	34%	↑

## Sold By County

Jan 2024 vs Dec 2023

Amador	38	31	23%	↑
Butte	14	18	-22%	↓
Colusa	4	8	-50%	↓
El Dorado	99	139	-29%	↓
Merced	91	87	5%	↑
Nevada	77	104	-26%	↓
Placer	259	313	-17%	↓
Sacramento	661	758	-13%	↓
San Joaquin	307	334	-8%	↓
Stanislaus	220	221	0%	
Sutter	39	44	-11%	↓
Yolo	81	75	8%	↑
Yuba	48	49	-2%	↓

Data provided by **MetroList**  
THE TRUE SOURCE

Powered by **TrendGraphix**  
YOUR HOME FOR REAL ESTATE DATA

\*Data represents Residential Property class only.

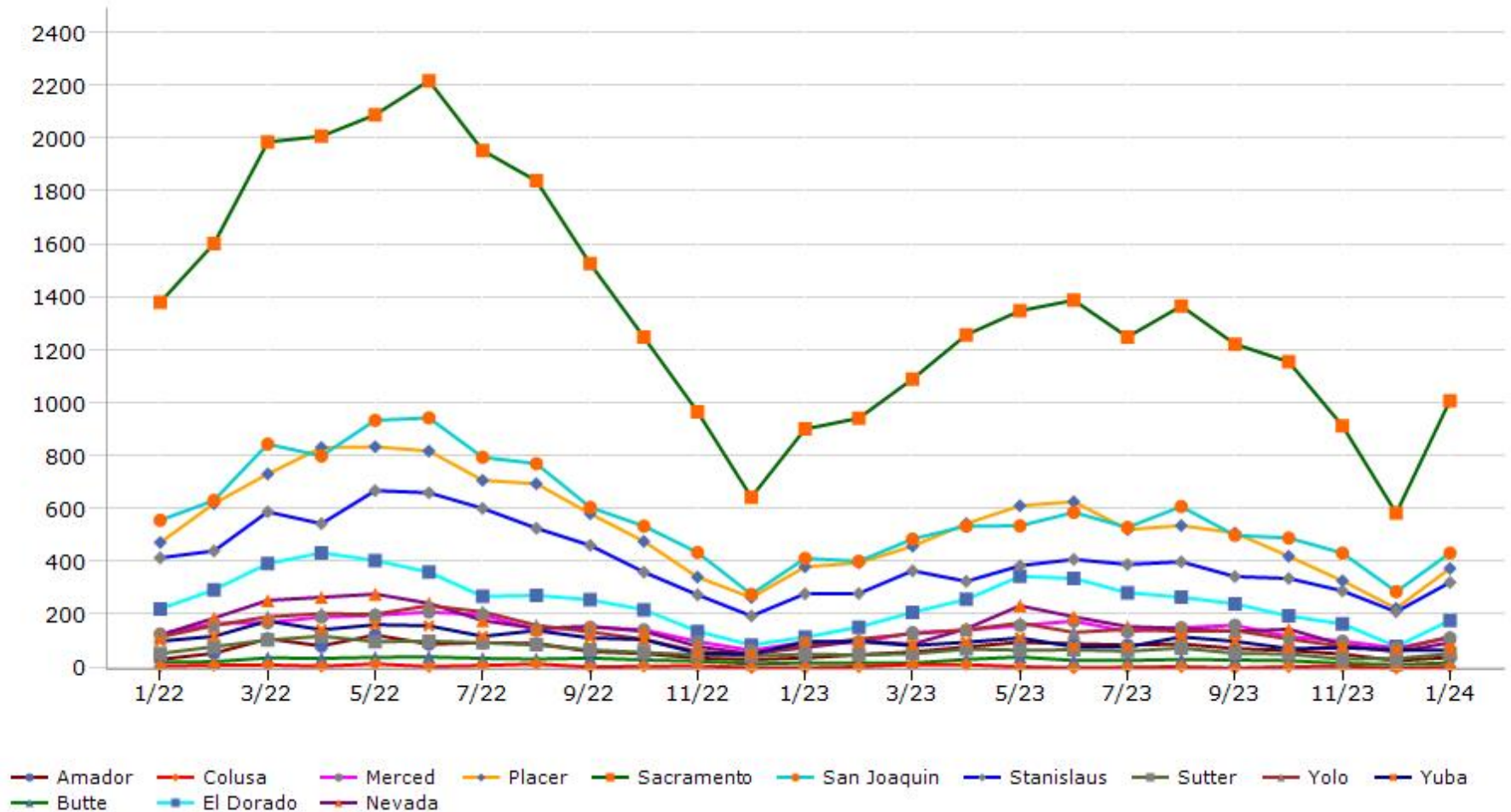
\*Pended represents the number of properties that went into contract during the course of a calendar month.

\*Month of Inventory is calculated by dividing the number of homes that went into contract in a given calendar month into the number of homes that were active at the end of a given calendar month.

# Trending Report: Jan 2022 - Jan 2024



## New Listing



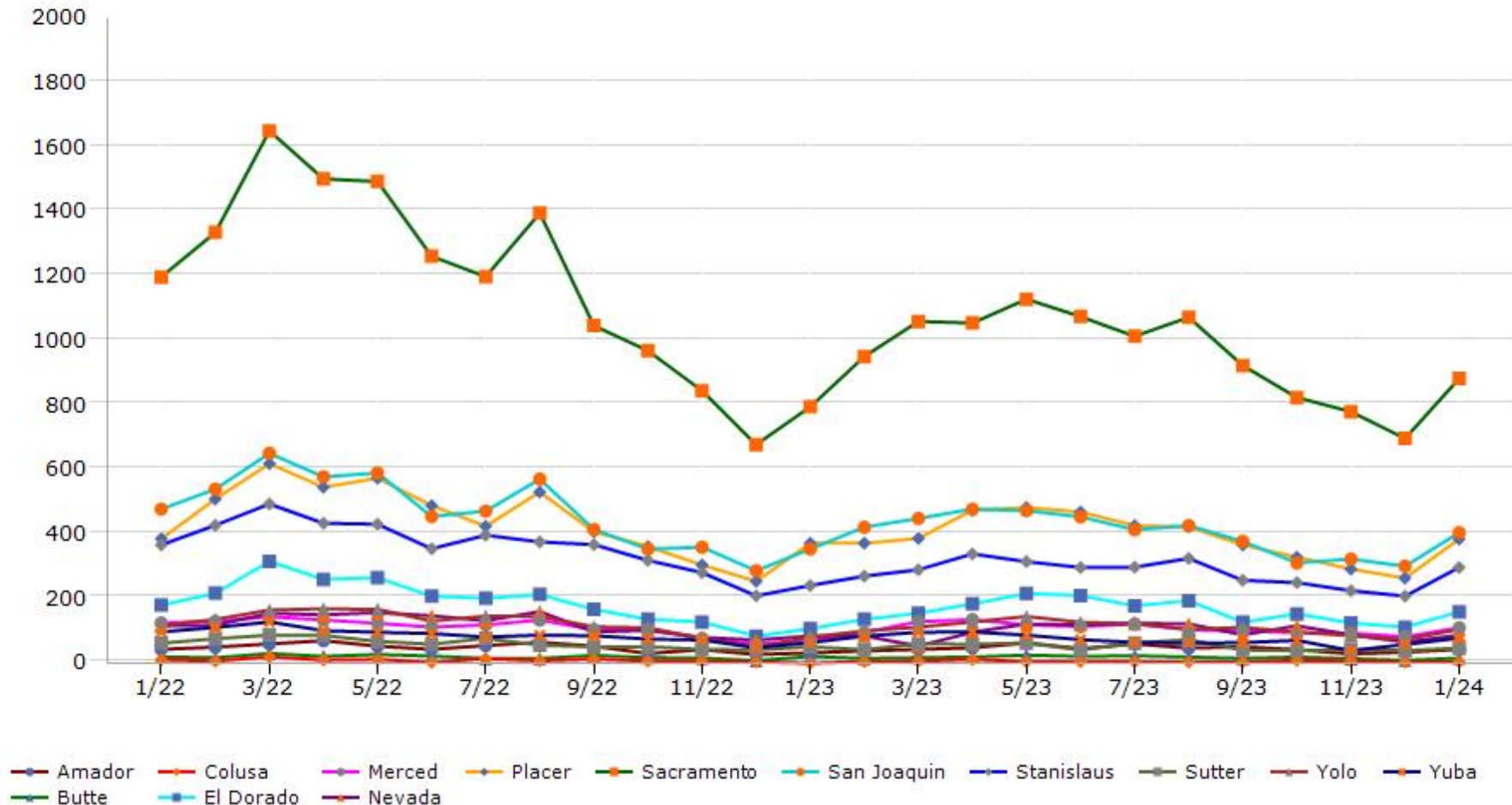
Data provided by **MetroList** THE TRUE SOURCE | Powered by **TrendGraphix** YOUR HOME FOR REAL ESTATE DATA

\*Data represents Residential Property class only.

# Trending Report: Jan 2022 - Jan 2024



## Pended



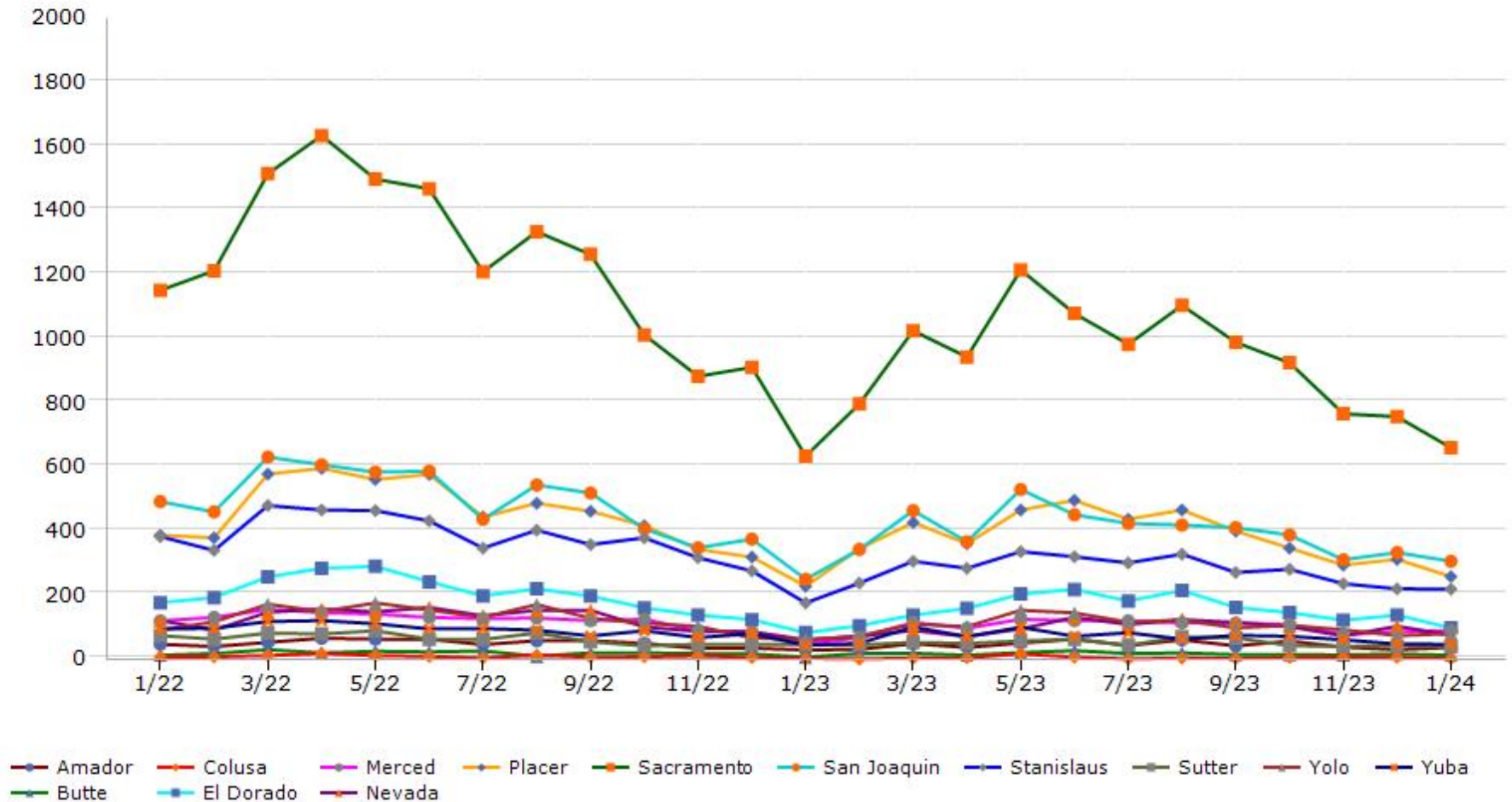
Data provided by **MetroList** THE TRUE SOURCE | Powered by **TrendGraphix** YOUR HOME FOR REAL ESTATE DATA

\*Data represents Residential Property class only.  
 \*Pended represents the number of properties that went into contract during the course of a calendar month.

# Trending Report: Jan 2022 - Jan 2024



## Sold



\*Data represents Residential Property class only.

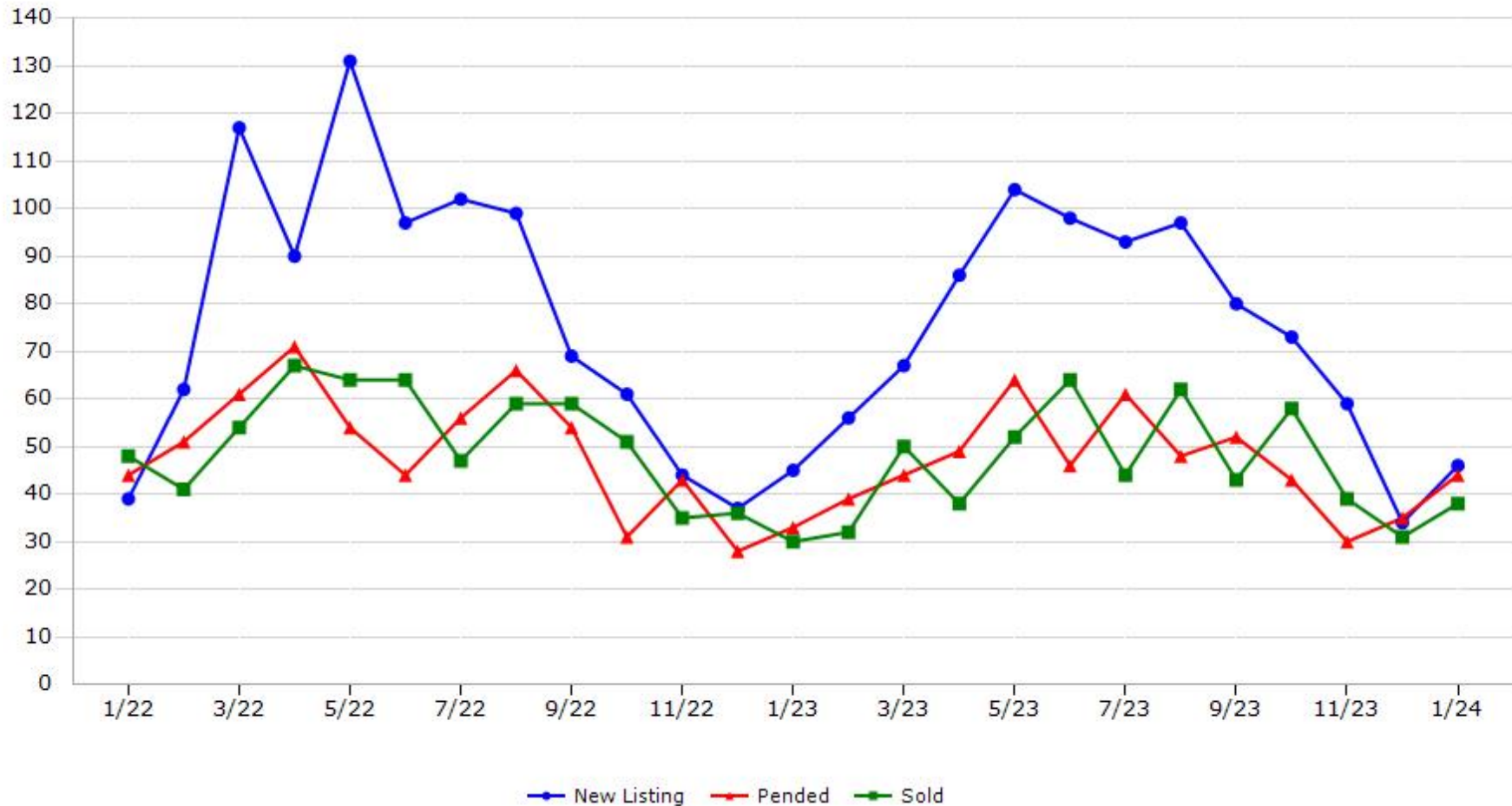
Data provided by **MetroList**  
THE TRUE SOURCE

Powered by **TrendGraphix**  
YOUR HOME FOR REAL ESTATE DATA

# Trending Report: Jan 2022 - Jan 2024



## Amador County



Data provided by **MetroList**® THE TRUE SOURCE Powered by **TrendGraphix** YOUR HOME FOR REAL ESTATE DATA

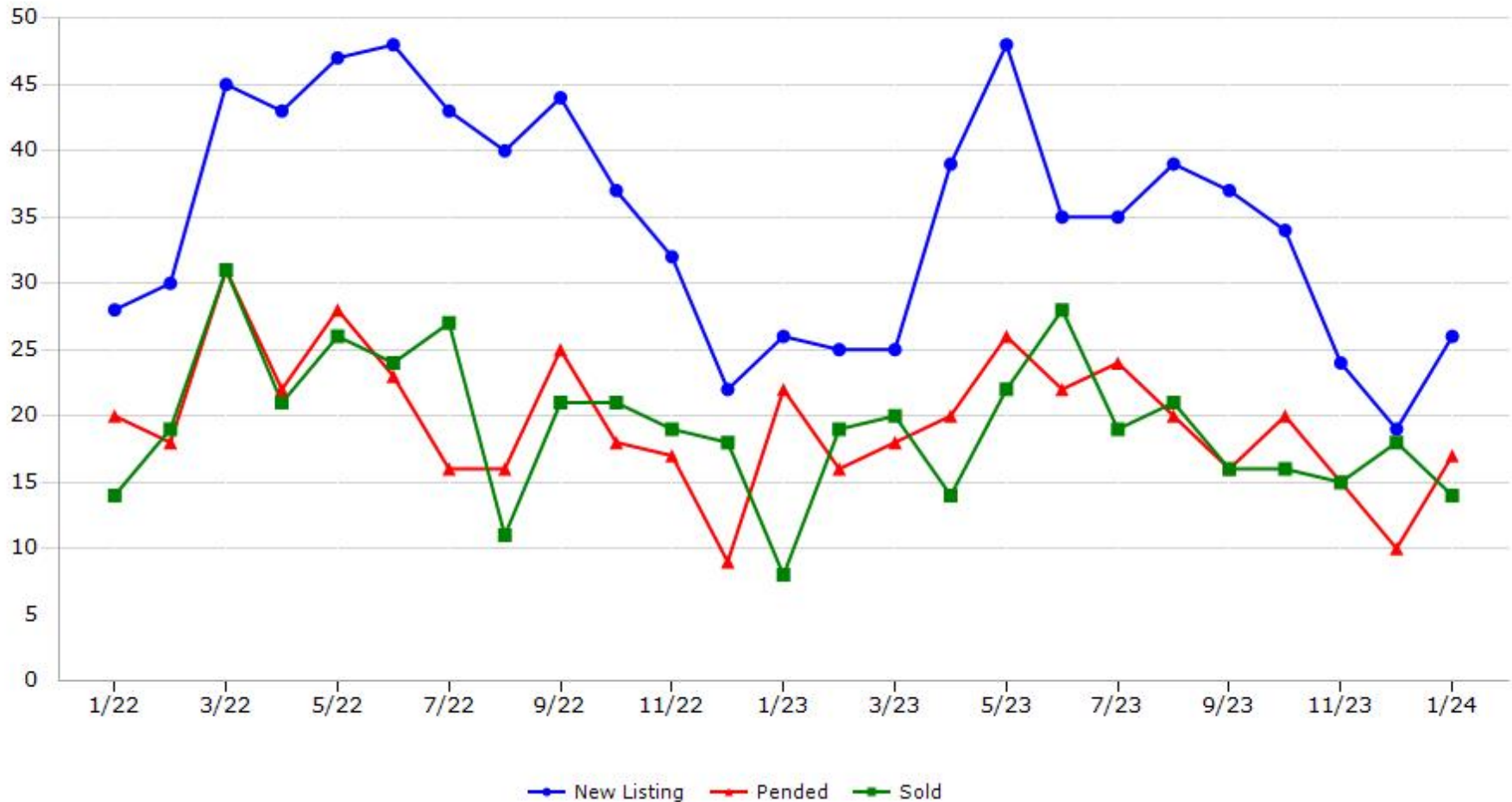
\*Data represents Residential Property class only.

\*Pended represents the number of properties that went into contract during the course of a calendar month.

# Trending Report: Jan 2022 - Jan 2024



## Butte County



Data provided by **MetroList** THE TRUE SOURCE. Powered by **TrendGraphix** YOUR HOME FOR REAL ESTATE DATA.

\*Data represents Residential Property class only.

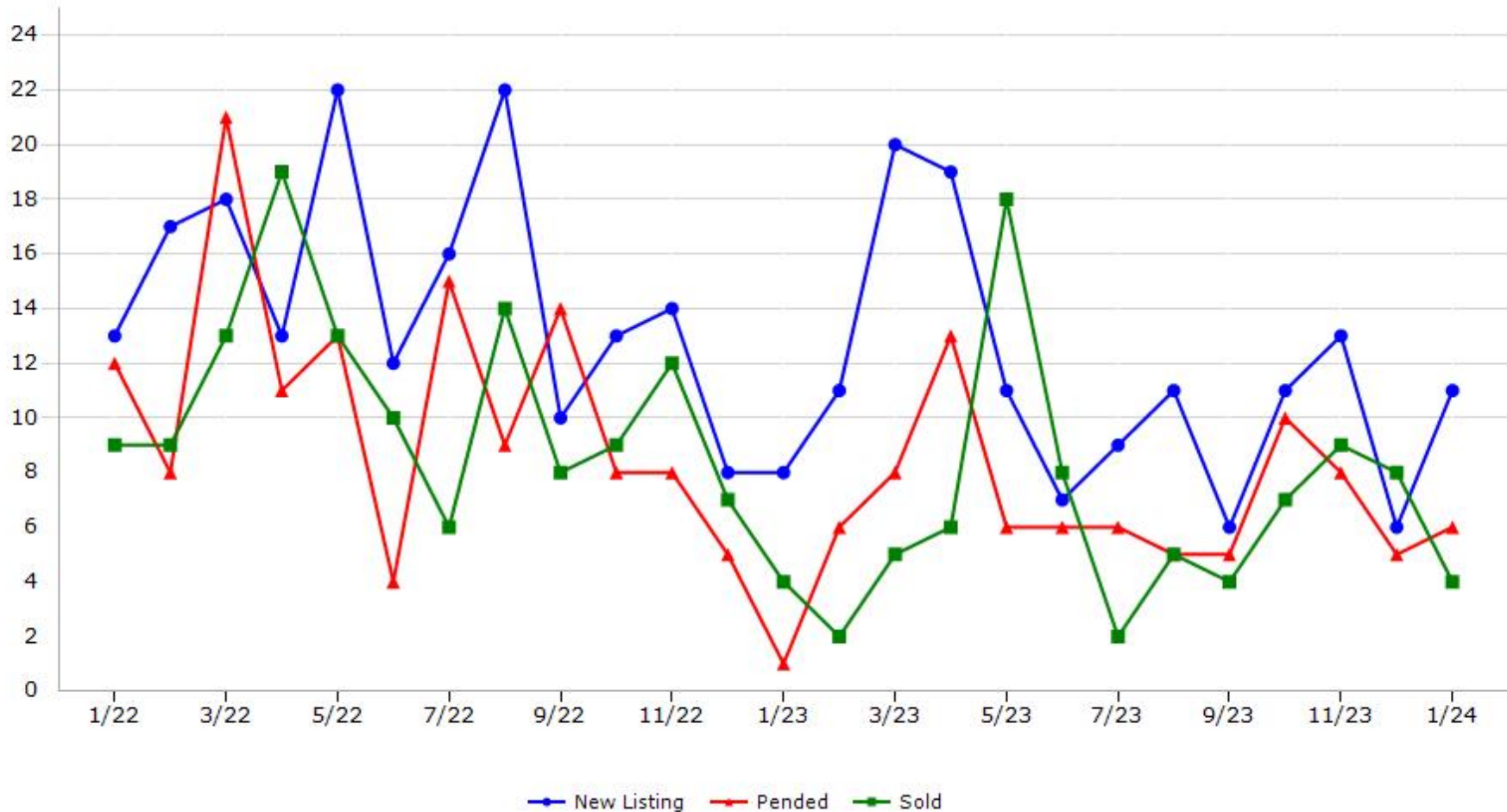
\*Pended represents the number of properties that went into contract during the course of a calendar month.

# Trending Report: Jan 2022 - Jan 2024



CALIFORNIA REAL ESTATE BROKERS, INC.

## Colusa County



Data provided by **MetroList** THE TRUE SOURCE Powered by **TrendGraphix** YOUR HOME FOR REAL ESTATE DATA

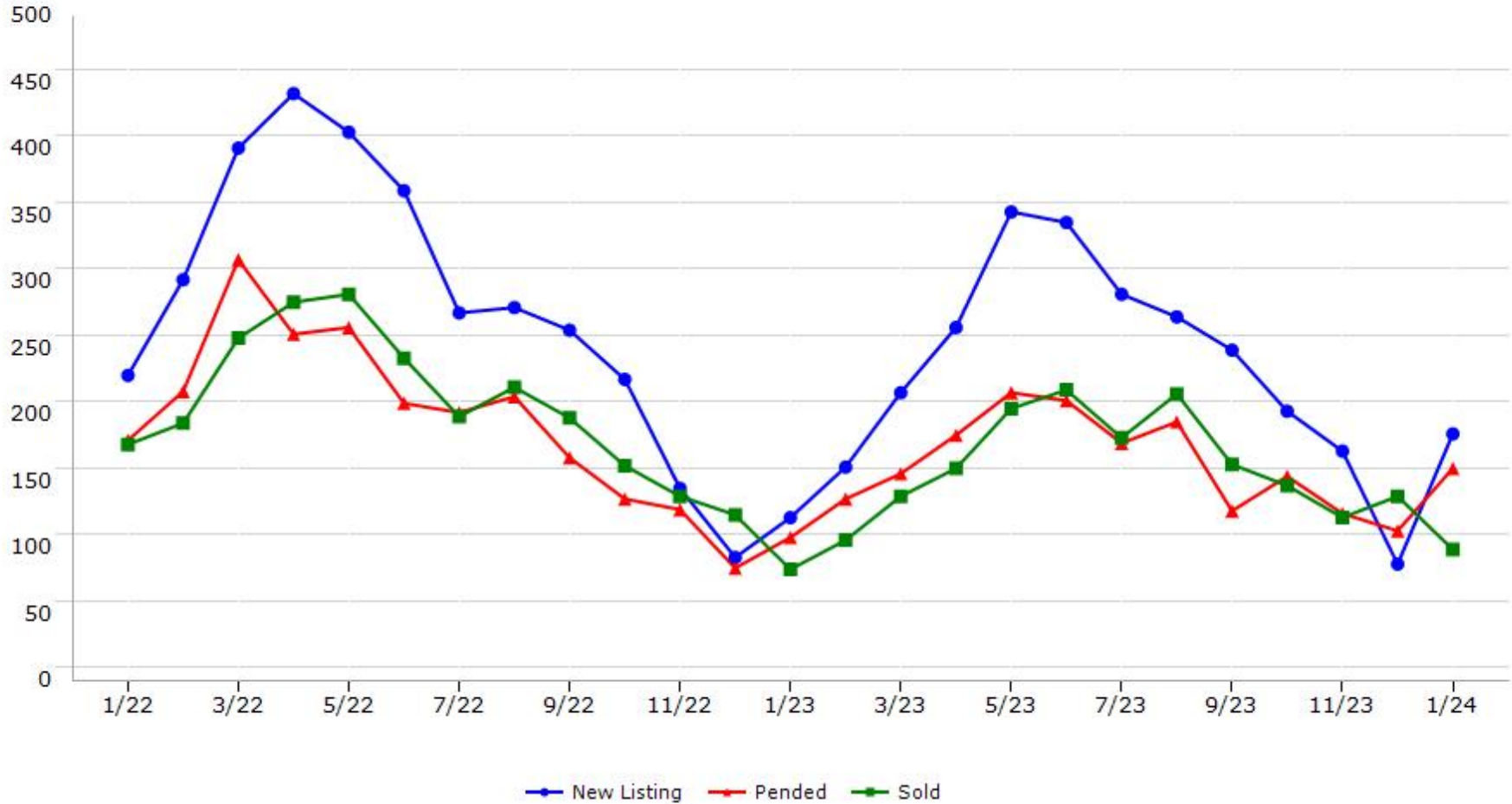
\*Data represents Residential Property class only.

\*Pended represents the number of properties that went into contract during the course of a calendar month.

# Trending Report: Jan 2022 - Jan 2024



## El Dorado County



Data provided by **MetroList** THE TRUE SOURCE. Powered by **TrendGraphix** YOUR HOME FOR REAL ESTATE DATA.

\*Data represents Residential Property class only.

\*Pended represents the number of properties that went into contract during the course of a calendar month.

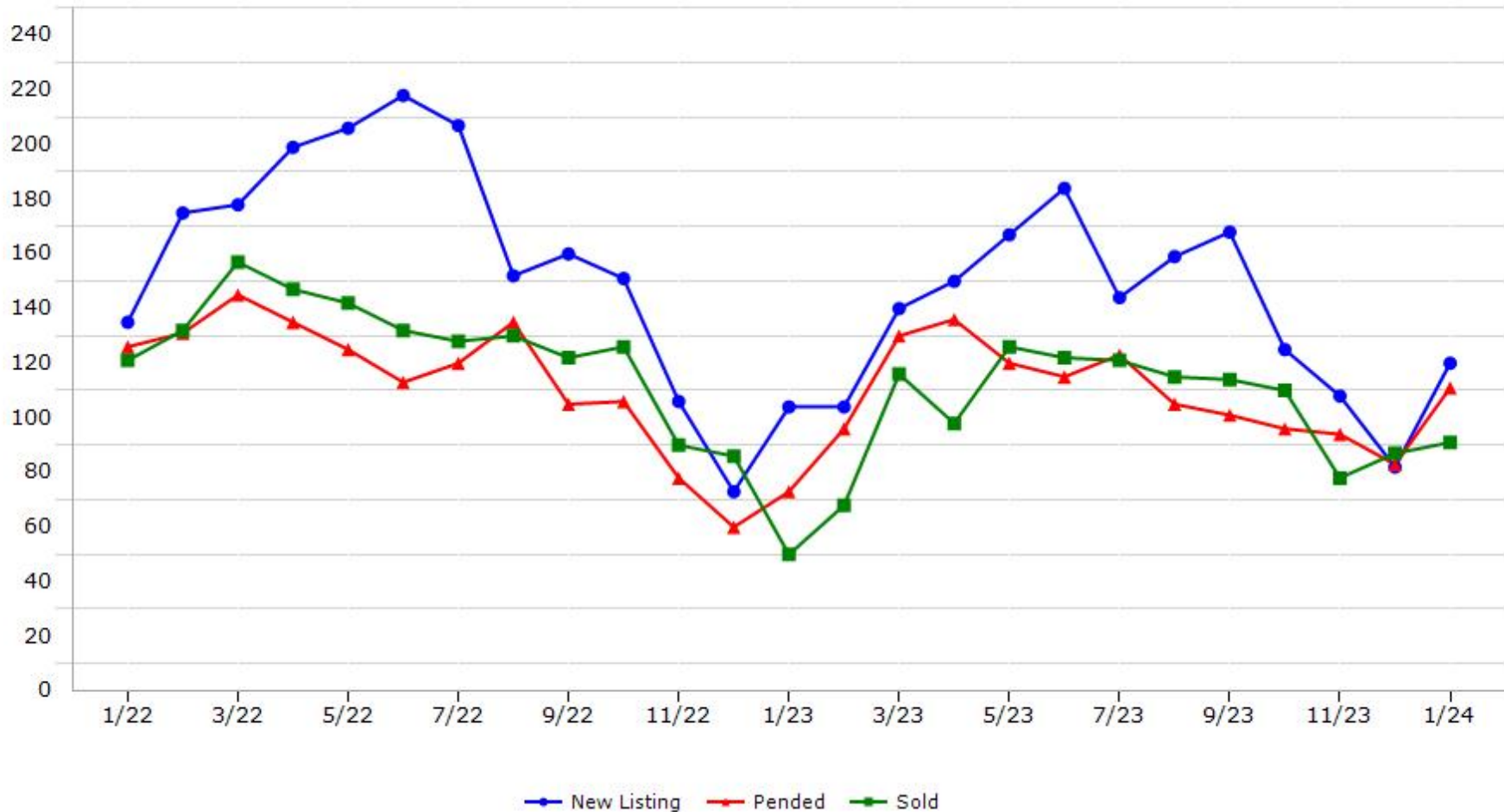


# Trending Report: Jan 2022 - Jan 2024



CALIFORNIA REAL ESTATE BROKERS, INC.

## Merced County



Data provided by **MetroList** THE TRUE SOURCE. Powered by **TrendGraphix** YOUR HOME FOR REAL ESTATE DATA.

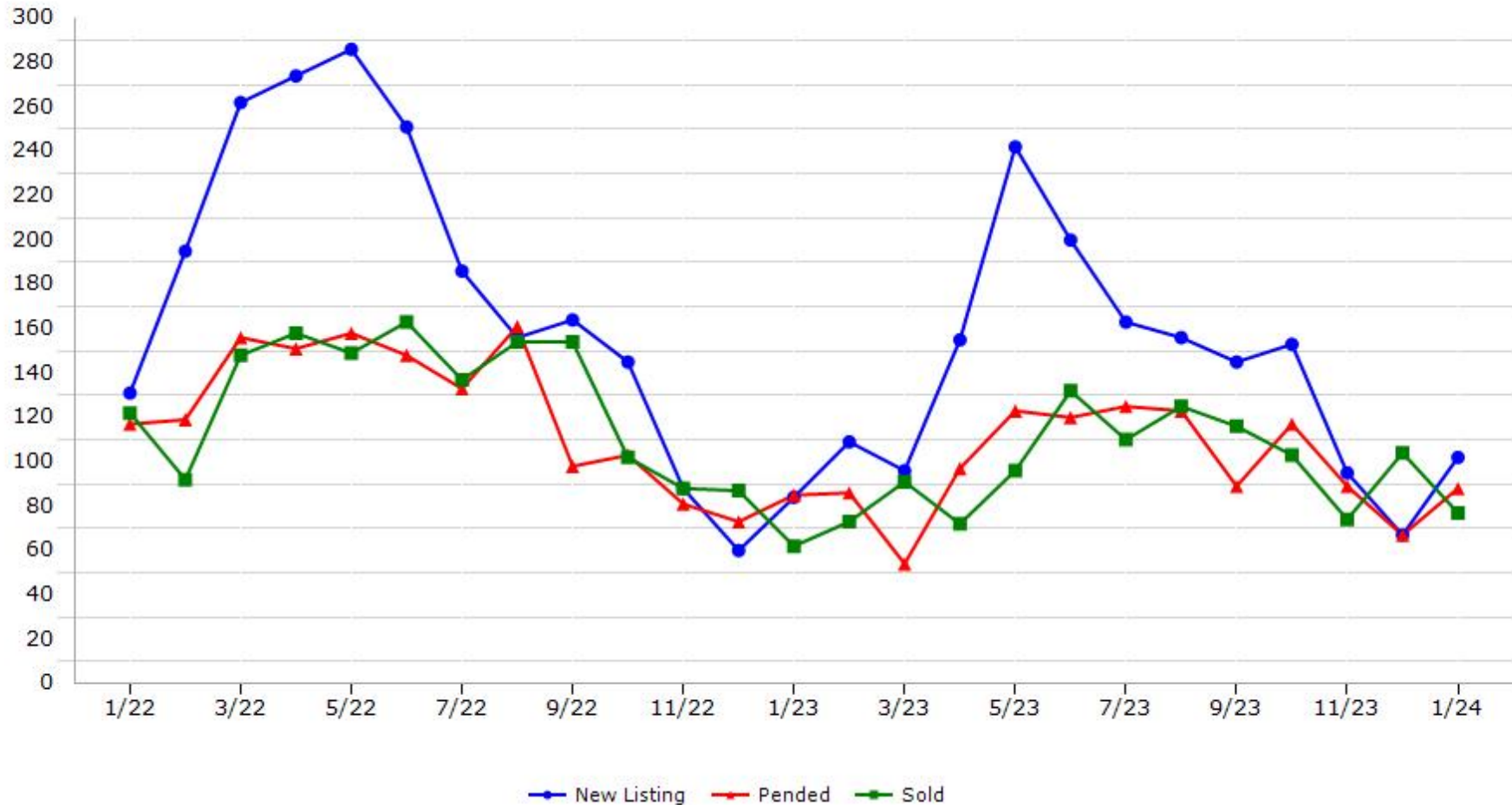
\*Data represents Residential Property class only.  
\*Pended represents the number of properties that went into contract during the course of a calendar month.

# Trending Report: Jan 2022 - Jan 2024



CALIFORNIA REAL ESTATE BROKERS, INC.

## Nevada County



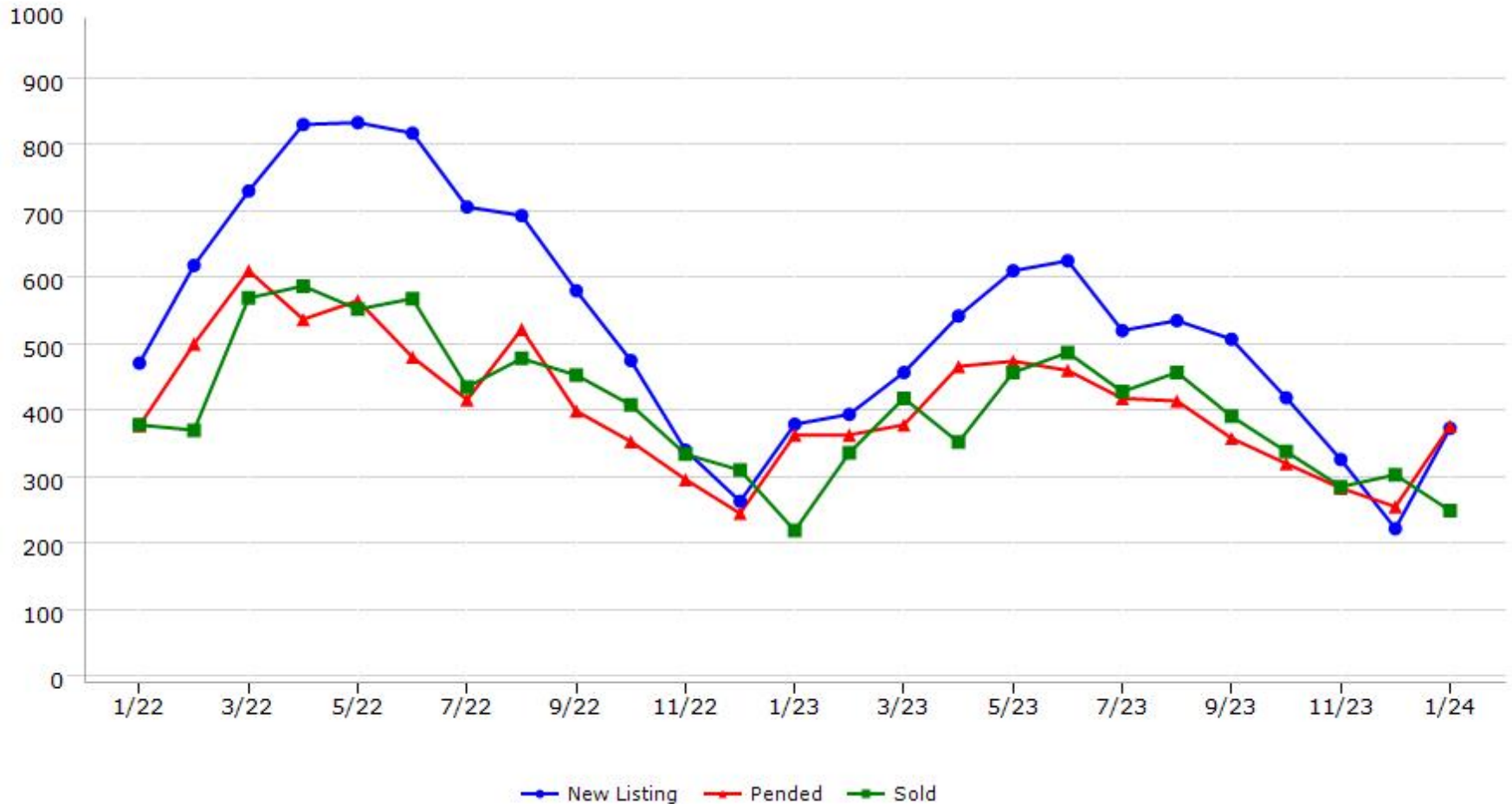
Data provided by **MetroList** THE TRUE SOURCE. Powered by **TrendGraphix** YOUR HOME FOR REAL ESTATE DATA.

\*Data represents Residential Property class only.  
\*Pended represents the number of properties that went into contract during the course of a calendar month.

# Trending Report: Jan 2022 - Jan 2024



## Placer County



Data provided by **MetroList** THE TRUE SOURCE Powered by **TrendGraphix** YOUR HOME FOR REAL ESTATE DATA

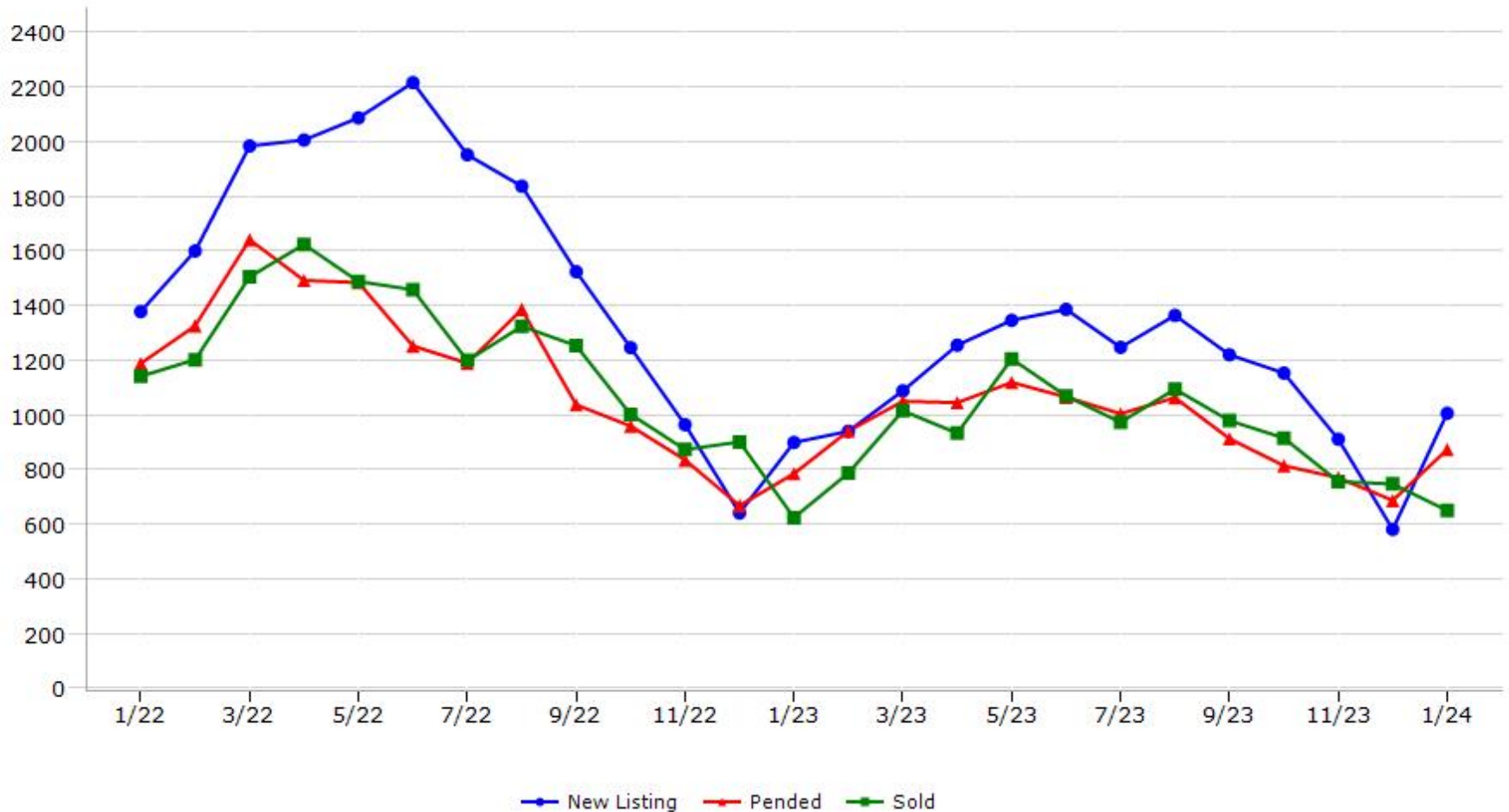
\*Data represents Residential Property class only.

\*Pended represents the number of properties that went into contract during the course of a calendar month.

# Trending Report: Jan 2022 - Jan 2024



## Sacramento County



Data provided by **MetroList** THE TRUE SOURCE Powered by **TrendGraphix** YOUR HOME FOR REAL ESTATE DATA

\*Data represents Residential Property class only.

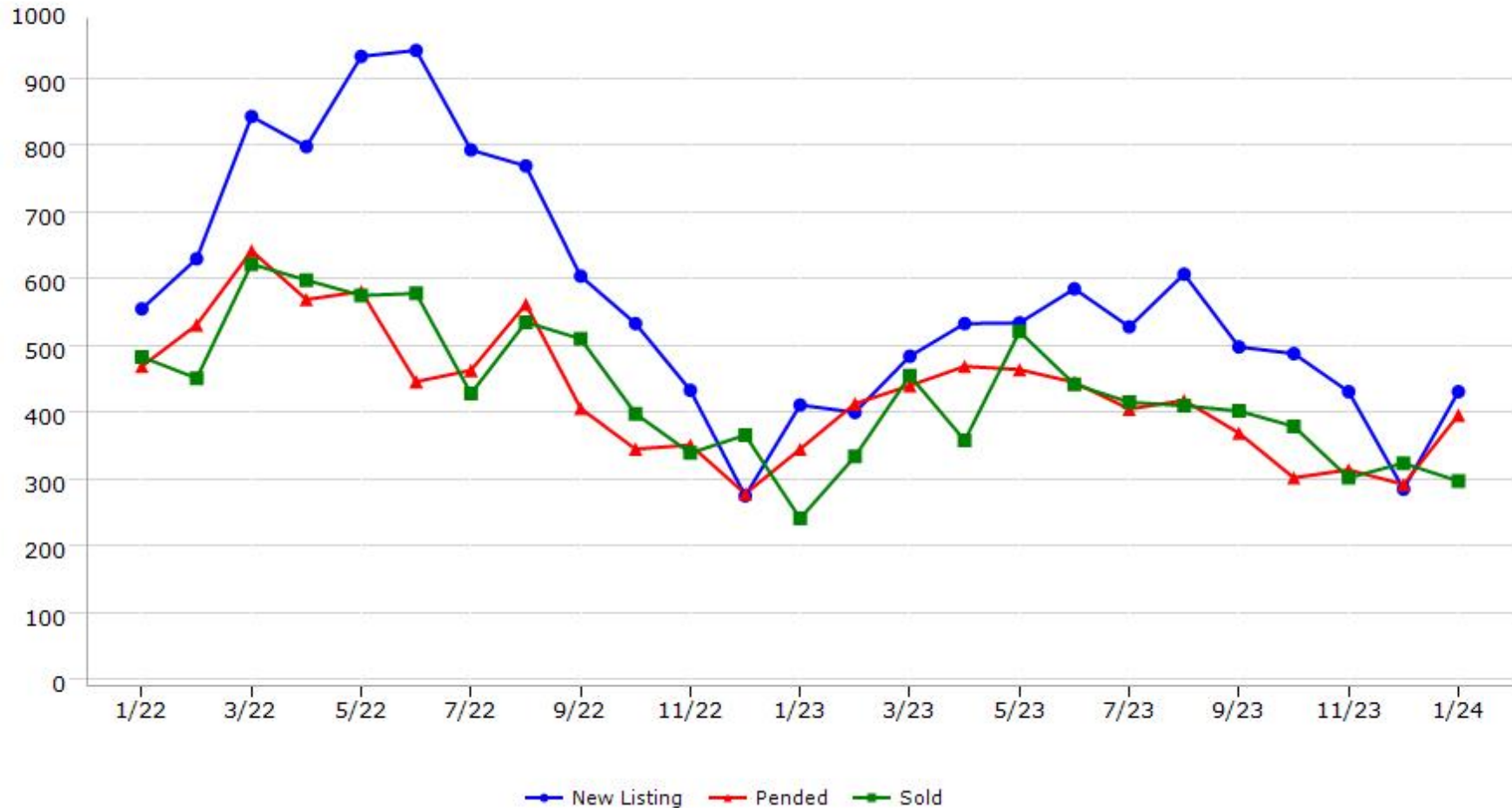
\*Pended represents the number of properties that went into contract during the course of a calendar month.

# Trending Report: Jan 2022 - Jan 2024



CALIFORNIA REAL ESTATE BROKERS, INC.

## San Joaquin County



Data provided by **MetroList** THE TRUE SOURCE. Powered by **TrendGraphix** YOUR HOME FOR REAL ESTATE DATA.

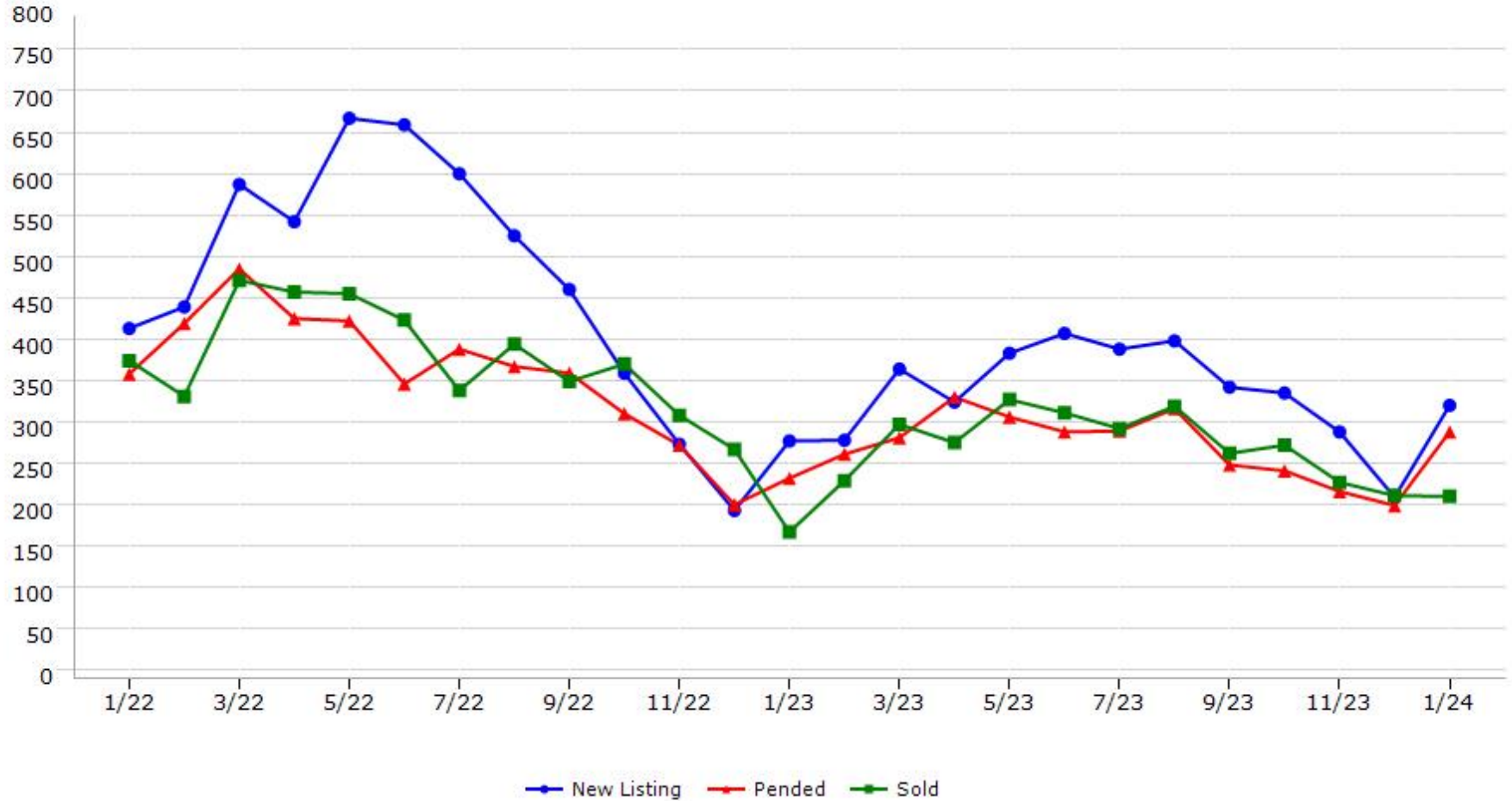
\*Data represents Residential Property class only.

\*Pended represents the number of properties that went into contract during the course of a calendar month.

# Trending Report: Jan 2022 - Jan 2024



## Stanislaus County



Data provided by **MetroList** THE TRUE SOURCE. Powered by **TrendGraphix** YOUR HOME FOR REAL ESTATE DATA.

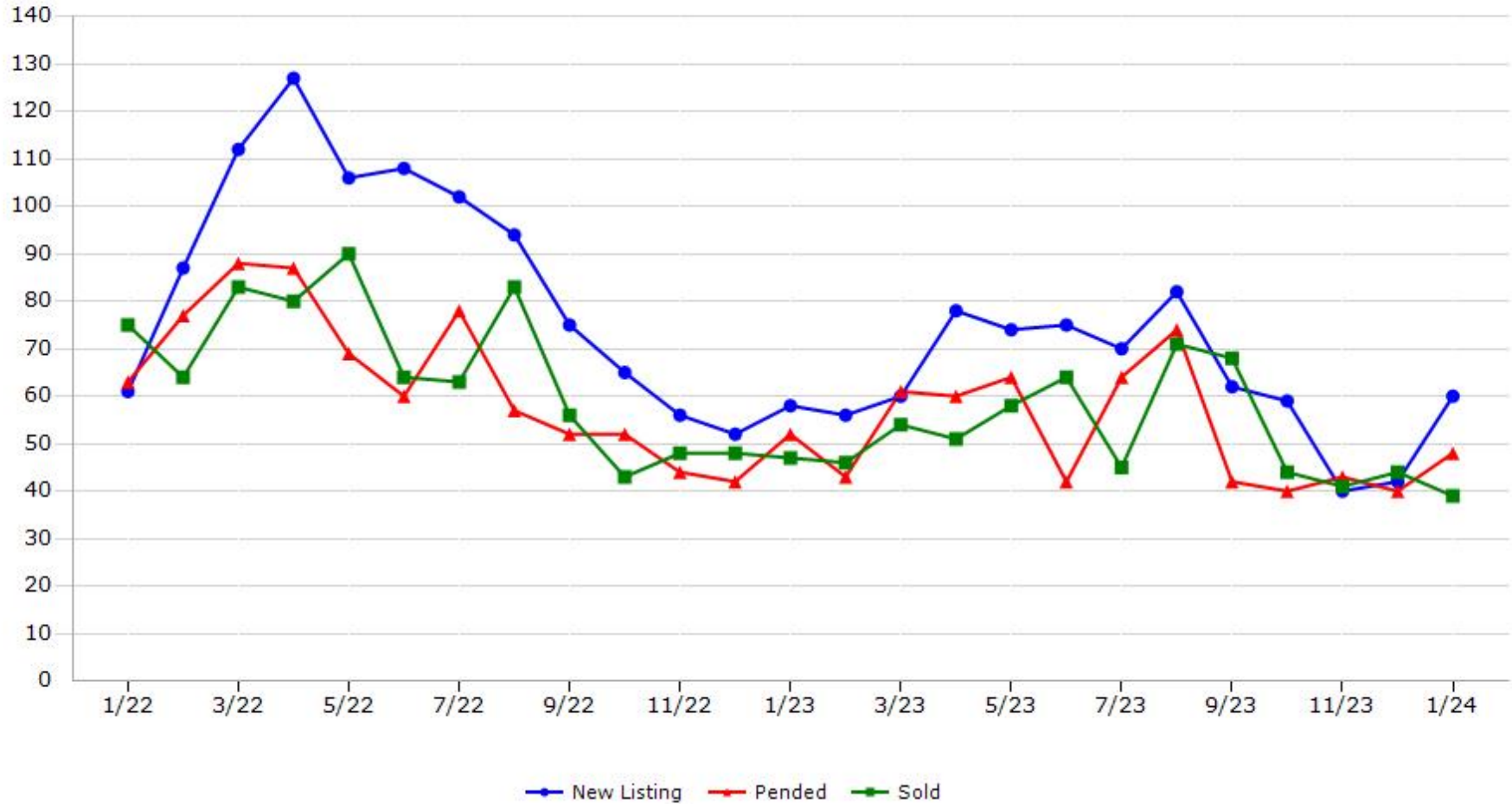
\*Data represents Residential Property class only.

\*Pended represents the number of properties that went into contract during the course of a calendar month.

# Trending Report: Jan 2022 - Jan 2024



## Sutter County



Data provided by **MetroList** THE TRUE SOURCE Powered by **TrendGraphix** YOUR HOME FOR REAL ESTATE DATA

\*Data represents Residential Property class only.

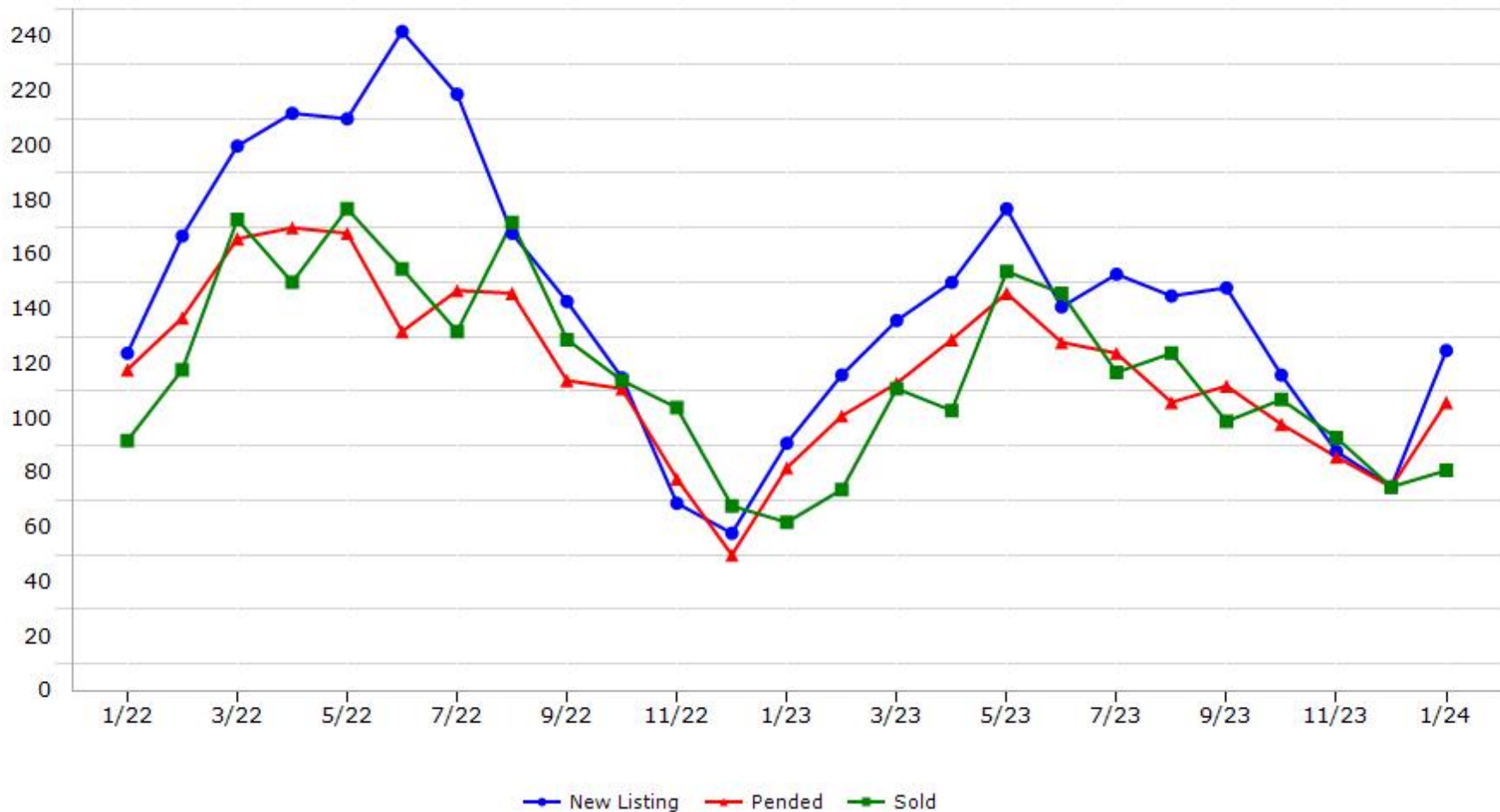
\*Pended represents the number of properties that went into contract during the course of a calendar month.

# Trending Report: Jan 2022 - Jan 2024



CALIFORNIA REAL ESTATE BROKERS, INC.

## Yolo County



Data provided by **MetroList** THE TRUE SOURCE Powered by **TrendGraphix** YOUR HOME FOR REAL ESTATE DATA

\*Data represents Residential Property class only.

\*Pended represents the number of properties that went into contract during the course of a calendar month.

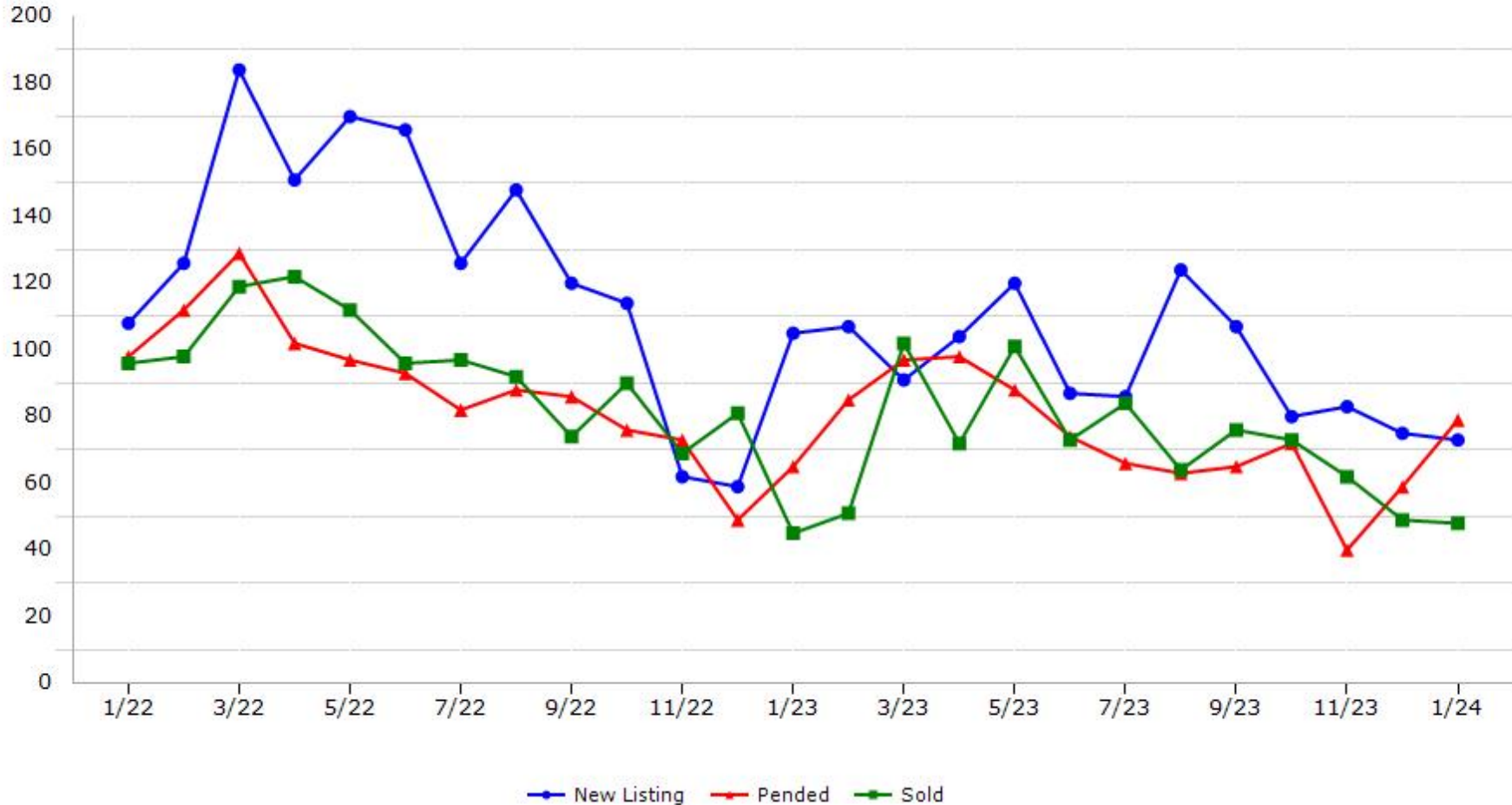


# Trending Report: Jan 2022 - Jan 2024



CALIFORNIA REAL ESTATE BROKERS, INC.

## Yuba County



Data provided by **MetroList** THE TRUE SOURCE. Powered by **TrendGraphix** YOUR HOME FOR REAL ESTATE DATA.

\*Data represents Residential Property class only.

\*Pended represents the number of properties that went into contract during the course of a calendar month.