

Monthly Market Report - December 2023



CALIFORNIA REAL ESTATE BROKERS, INC.

MetroList All Areas

Dec 2023 vs Nov 2023

New Listing

1712 2652 -35% ↓

Pended

2059 2143 -4% ↓

Sold

2081 2125 -2% ↓

Avg DOM

35 30 17% ↑

Month of Inventory

2.1 2.4 -12% ↓

New Listing By County

Dec 2023 vs Nov 2023

Amador	31	59	-47%	↓
Butte	19	23	-17%	↓
Colusa	6	13	-54%	↓
El Dorado	80	170	-53%	↓
Merced	81	108	-25%	↓
Nevada	60	95	-37%	↓
Placer	205	332	-38%	↓
Sacramento	549	910	-40%	↓
San Joaquin	281	438	-36%	↓
Stanislaus	217	296	-27%	↓
Sutter	40	39	3%	↑
Yolo	72	88	-18%	↓
Yuba	71	82	-13%	↓

Pended By County

Dec 2023 vs Nov 2023

Amador	35	29	21%	↑
Butte	10	15	-33%	↓
Colusa	5	8	-38%	↓
El Dorado	121	123	-2%	↓
Merced	92	92	0%	
Nevada	72	93	-23%	↓
Placer	278	291	-4%	↓
Sacramento	725	773	-6%	↓
San Joaquin	323	323	0%	
Stanislaus	225	227	-1%	↓
Sutter	38	43	-12%	↓
Yolo	74	85	-13%	↓
Yuba	62	41	51%	↑

Sold By County

Dec 2023 vs Nov 2023

Amador	29	39	-26%	↓
Butte	17	15	13%	↑
Colusa	8	9	-11%	↓
El Dorado	134	122	10%	↑
Merced	86	77	12%	↑
Nevada	101	74	36%	↑
Placer	304	294	3%	↑
Sacramento	717	757	-5%	↓
San Joaquin	315	308	2%	↑
Stanislaus	212	236	-10%	↓
Sutter	42	41	2%	↑
Yolo	72	93	-23%	↓
Yuba	45	60	-25%	↓

Data provided by **MetroList**[®]
THE TRUE SOURCE

Powered by **TrendGraphix**
YOUR HOME FOR REAL ESTATE DATA

*Data represents Residential Property class only.

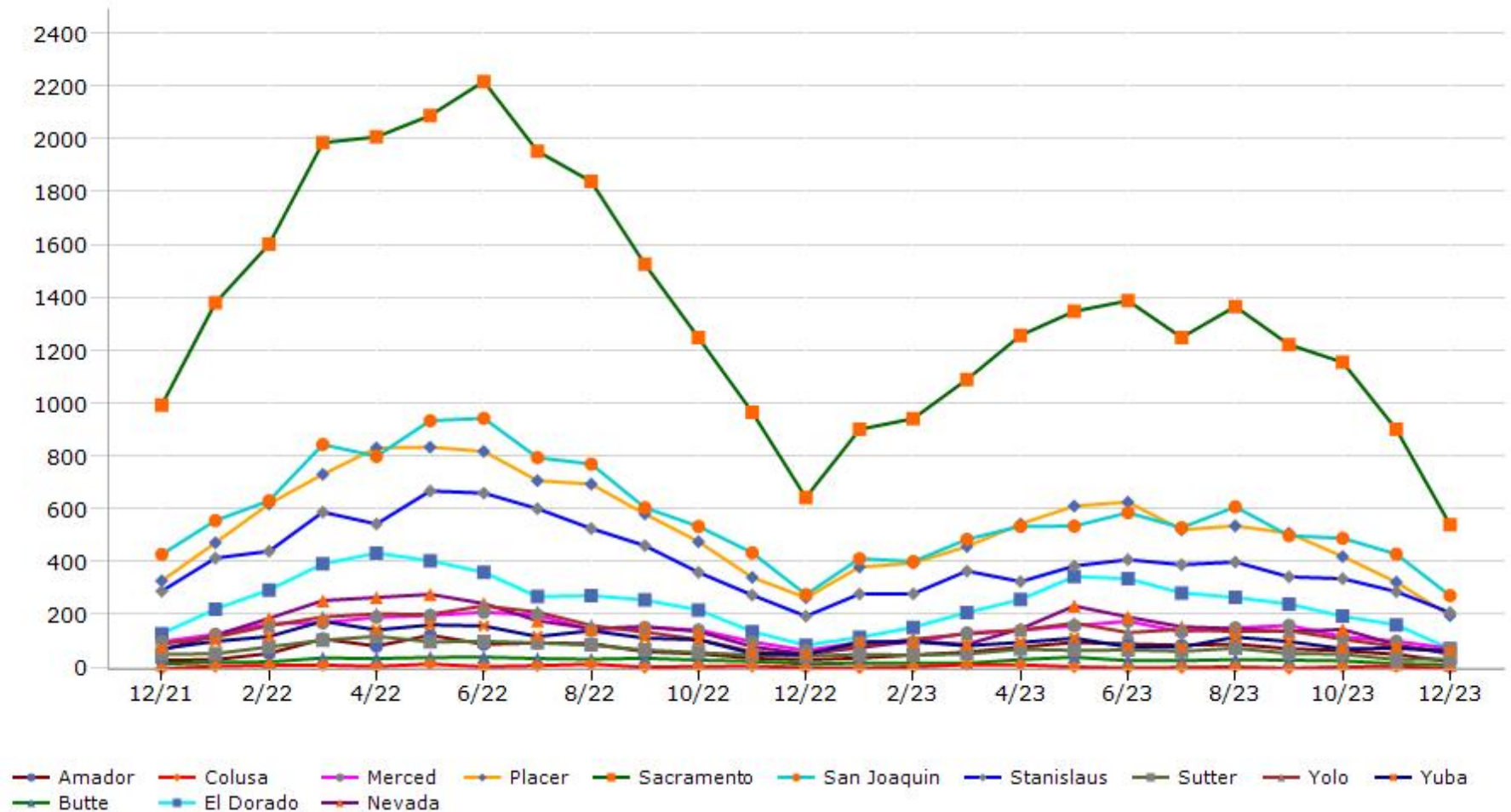
*Pended represents the number of properties that went into contract during the course of a calendar month.

*Month of Inventory is calculated by dividing the number of homes that went into contract in a given calendar month into the number of homes that were active at the end of a given calendar month.

Trending Report: Dec 2021 - Dec 2023



New Listing



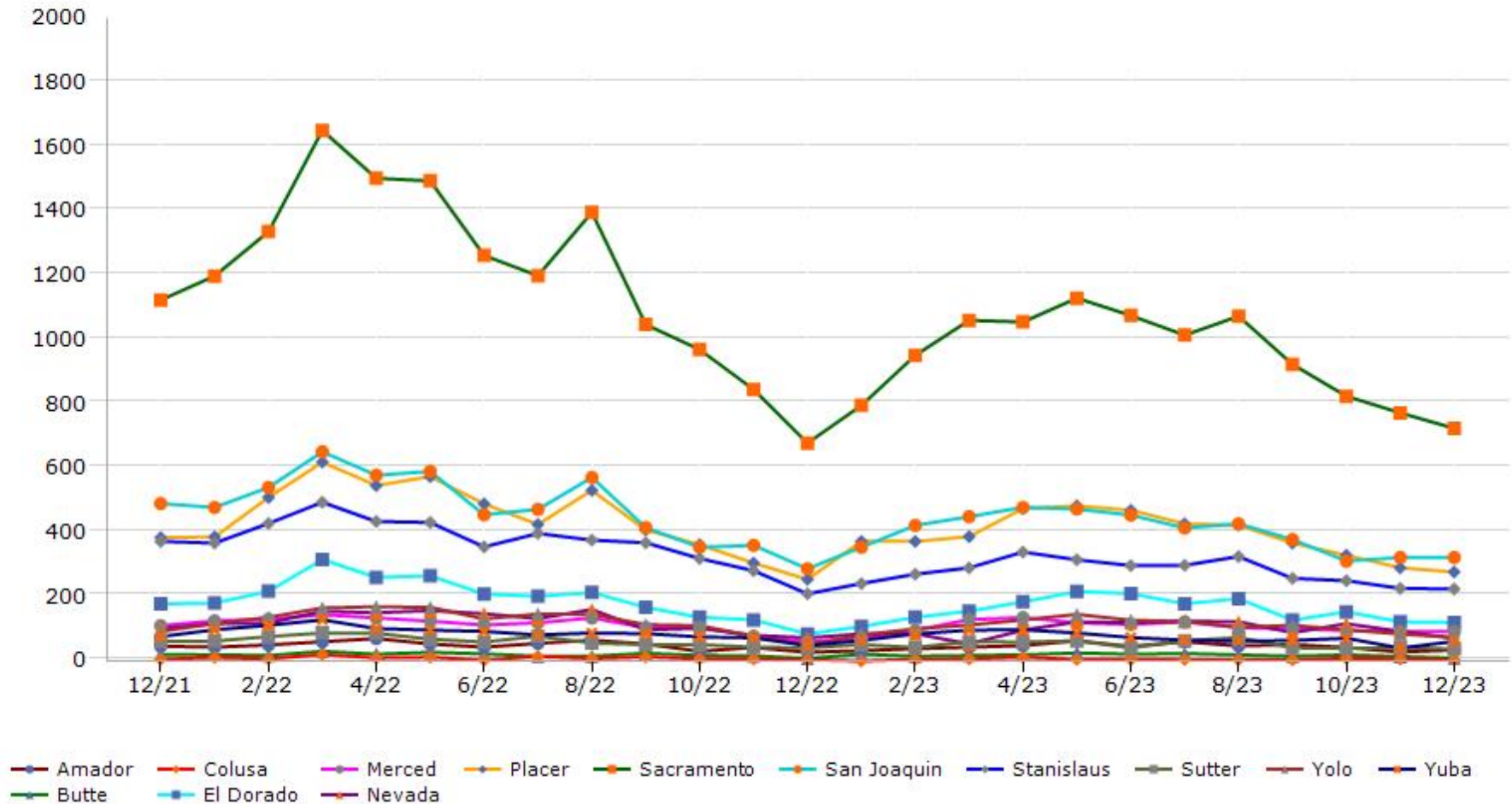
Data provided by **MetroList** THE TRUE SOURCE | Powered by **TrendGraphix** YOUR HOME FOR REAL ESTATE DATA

*Data represents Residential Property class only.

Trending Report: Dec 2021 - Dec 2023



Pended



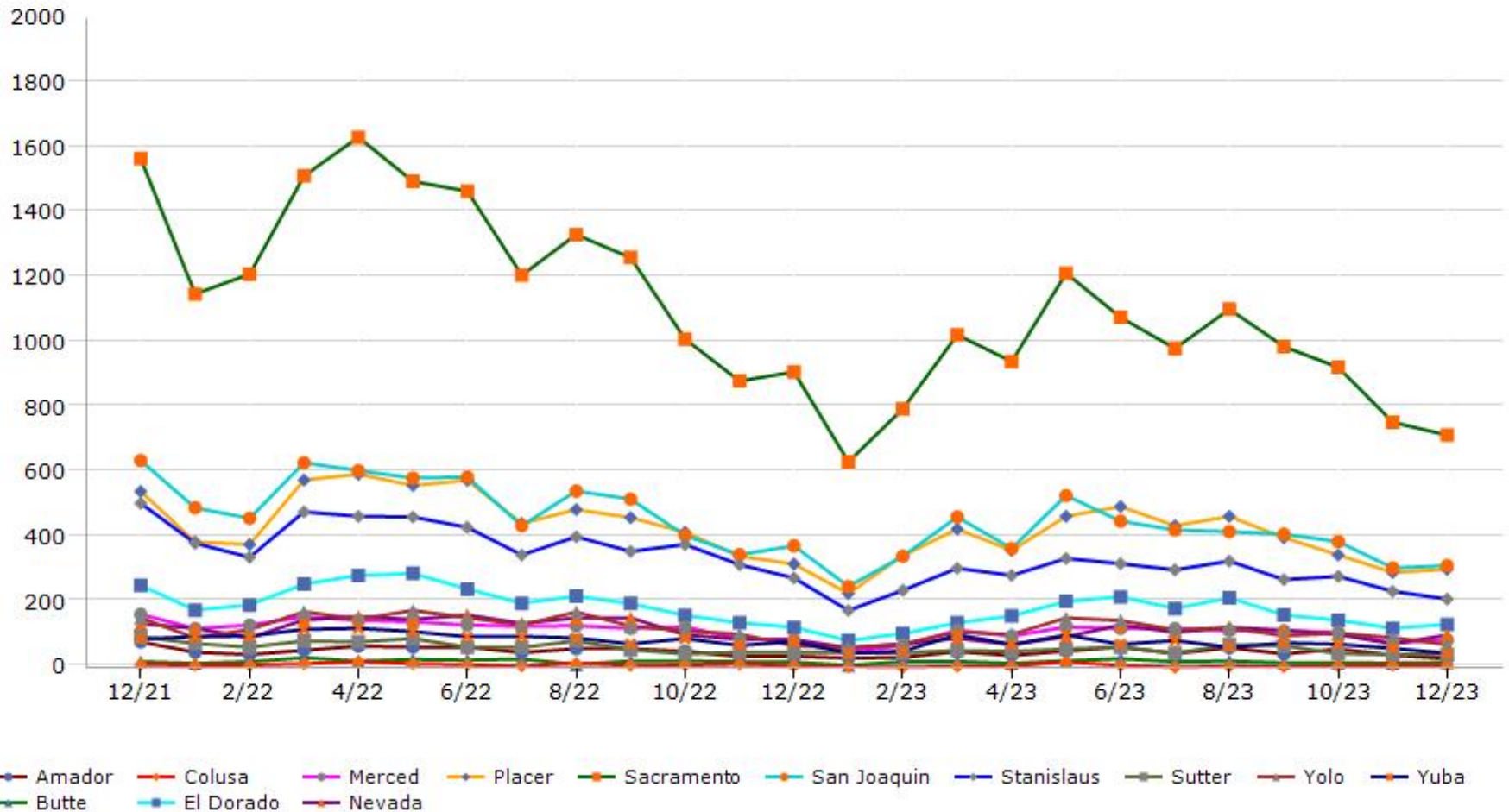
Data provided by **MetroList** THE TRUE SOURCE | Powered by **TrendGraphix** YOUR HOME FOR REAL ESTATE DATA

*Data represents Residential Property class only.
 *Pended represents the number of properties that went into contract during the course of a calendar month.

Trending Report: Dec 2021 - Dec 2023



Sold



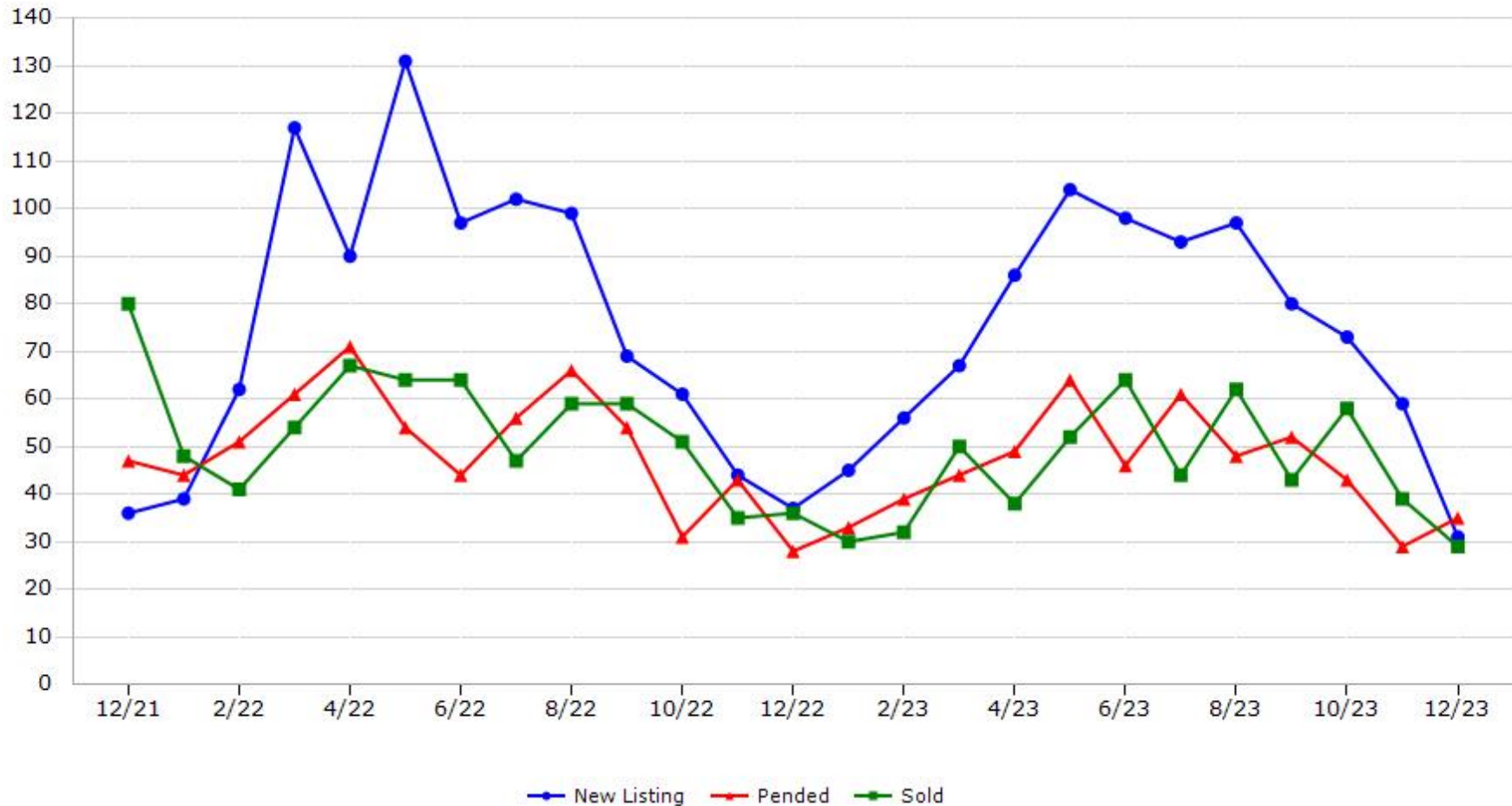
Data provided by **MetroList** THE TRUE SOURCE. Powered by **TrendGraphix** YOUR HOME FOR REAL ESTATE DATA.

*Data represents Residential Property class only.

Trending Report: Dec 2021 - Dec 2023



Amador County



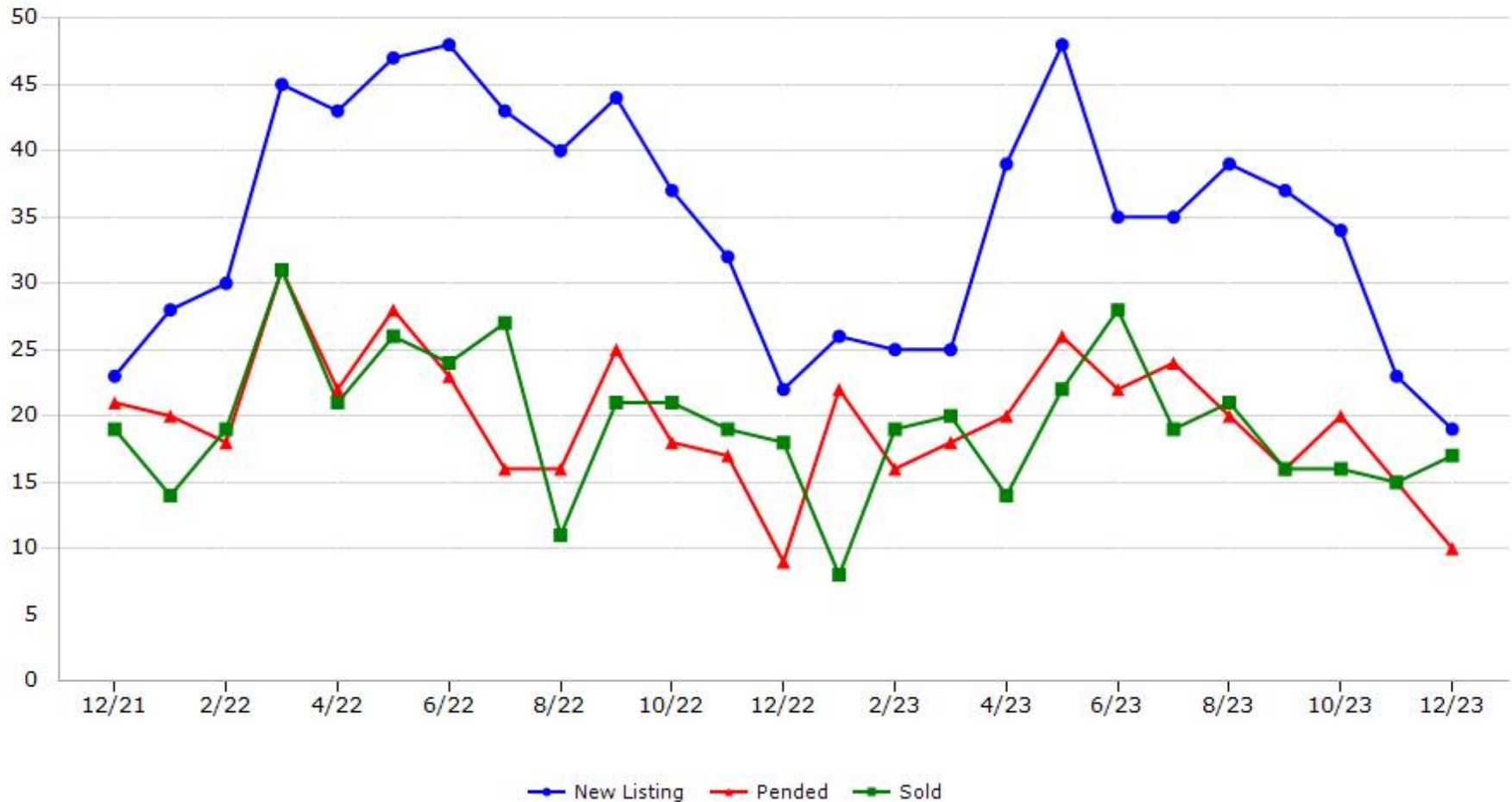
Data provided by **MetroList** THE TRUE SOURCE. Powered by **TrendGraphix** YOUR HOME FOR REAL ESTATE DATA.

*Data represents Residential Property class only.
*Pended represents the number of properties that went into contract during the course of a calendar month.

Trending Report: Dec 2021 - Dec 2023



Butte County



Data provided by **MetroList**® THE TRUE SOURCE. Powered by **TrendGraphix** YOUR HOME FOR REAL ESTATE DATA.

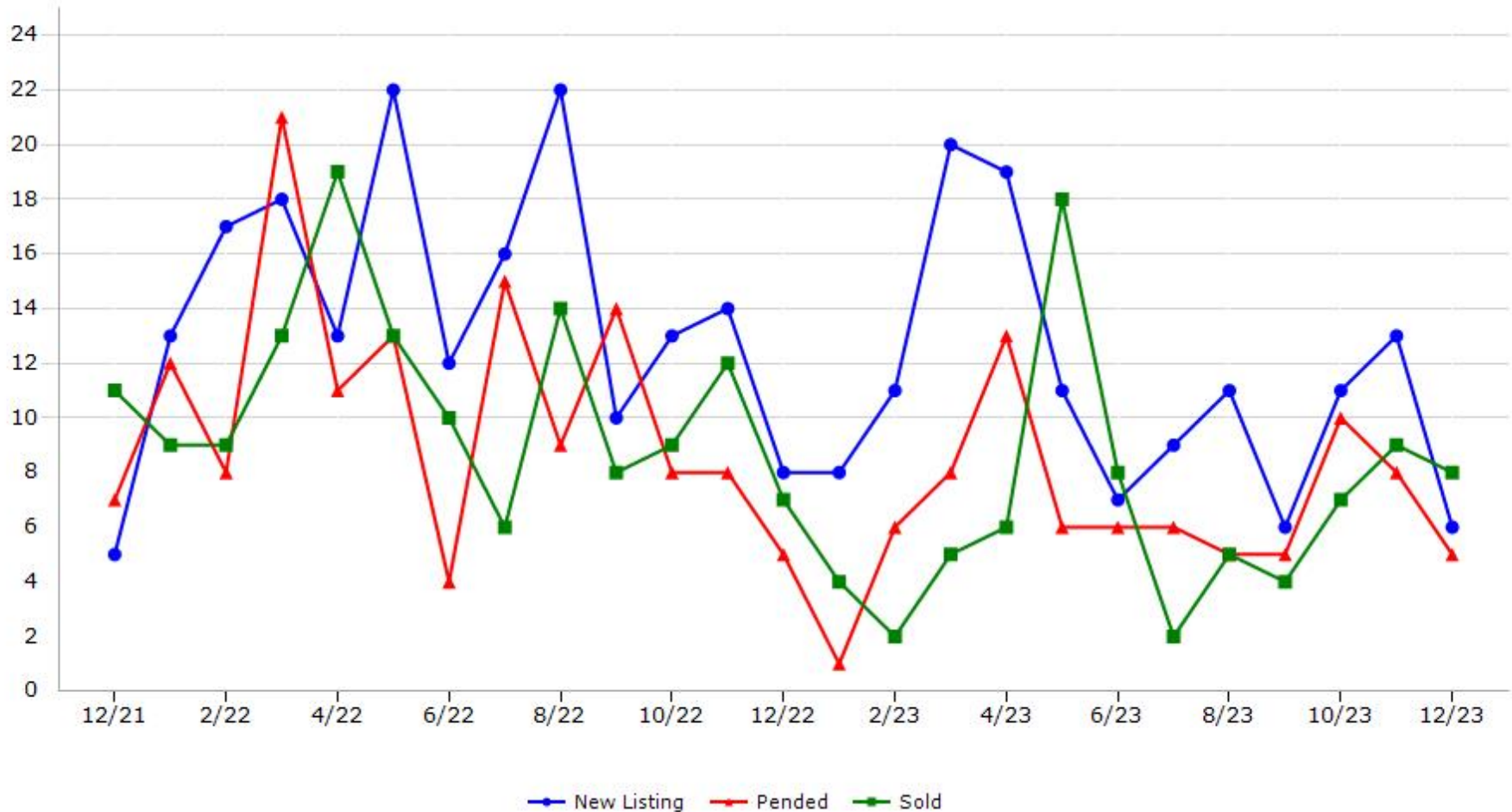
*Data represents Residential Property class only.

*Pended represents the number of properties that went into contract during the course of a calendar month.

Trending Report: Dec 2021 - Dec 2023



Colusa County



Data provided by **MetroList** THE TRUE SOURCE Powered by **TrendGraphix** YOUR HOME FOR REAL ESTATE DATA

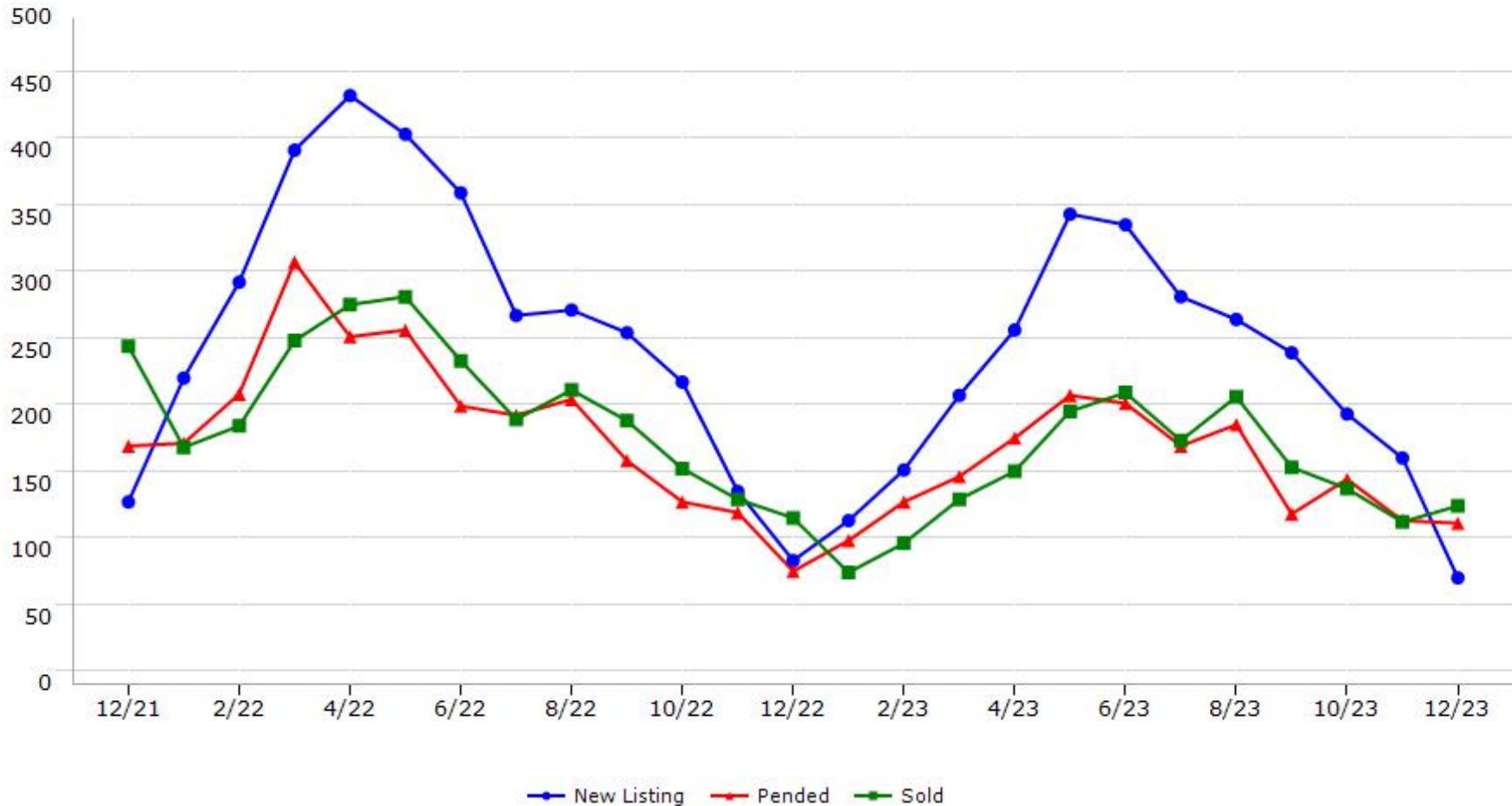
*Data represents Residential Property class only.

*Pended represents the number of properties that went into contract during the course of a calendar month.

Trending Report: Dec 2021 - Dec 2023



El Dorado County



Data provided by **MetroList**® THE TRUE SOURCE | Powered by **TrendGraphix** YOUR HOME FOR REAL ESTATE DATA

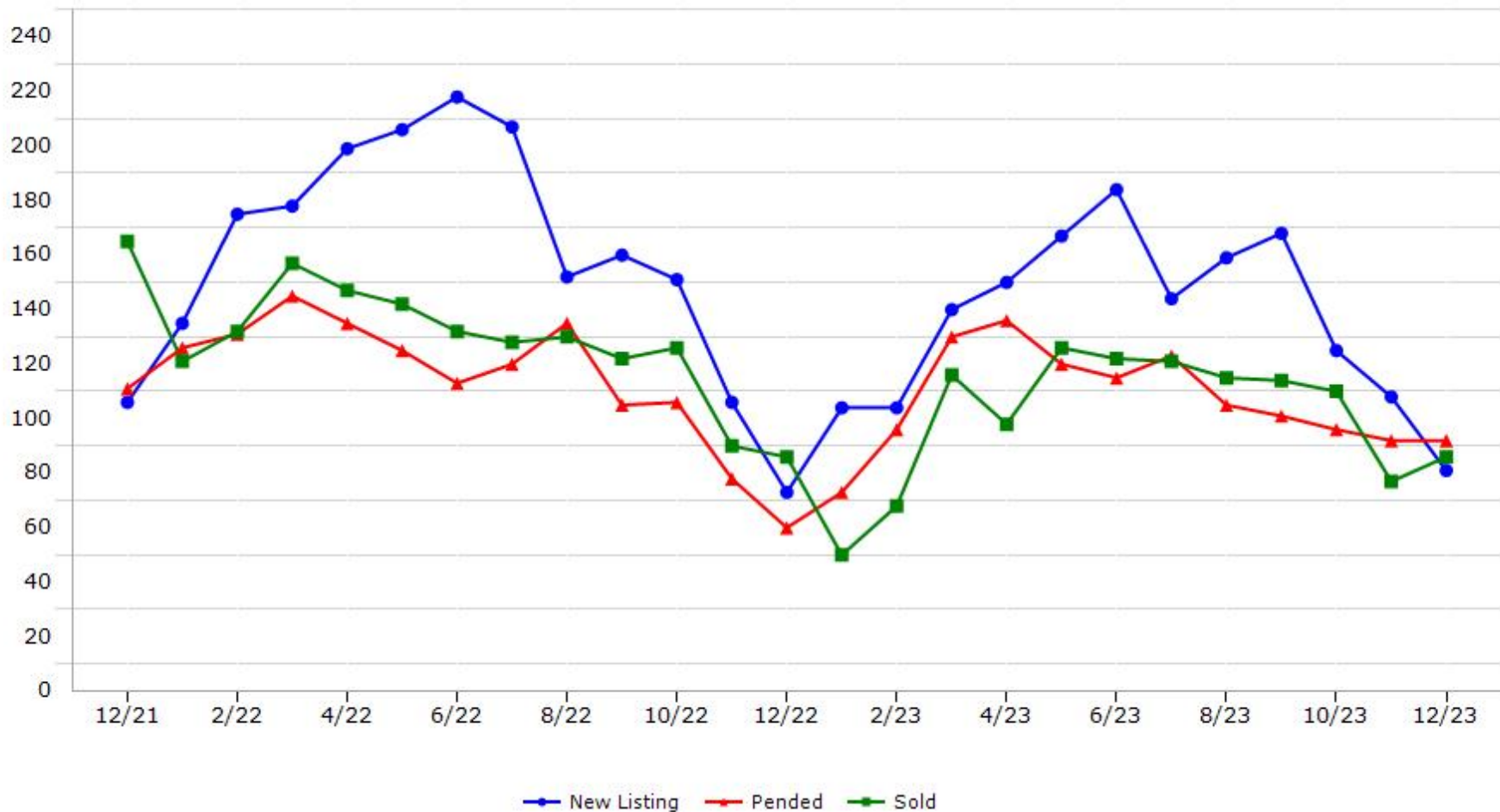
*Data represents Residential Property class only.

*Pended represents the number of properties that went into contract during the course of a calendar month.

Trending Report: Dec 2021 - Dec 2023



Merced County



Data provided by **MetroList** THE TRUE SOURCE. Powered by **TrendGraphix** YOUR HOME FOR REAL ESTATE DATA.

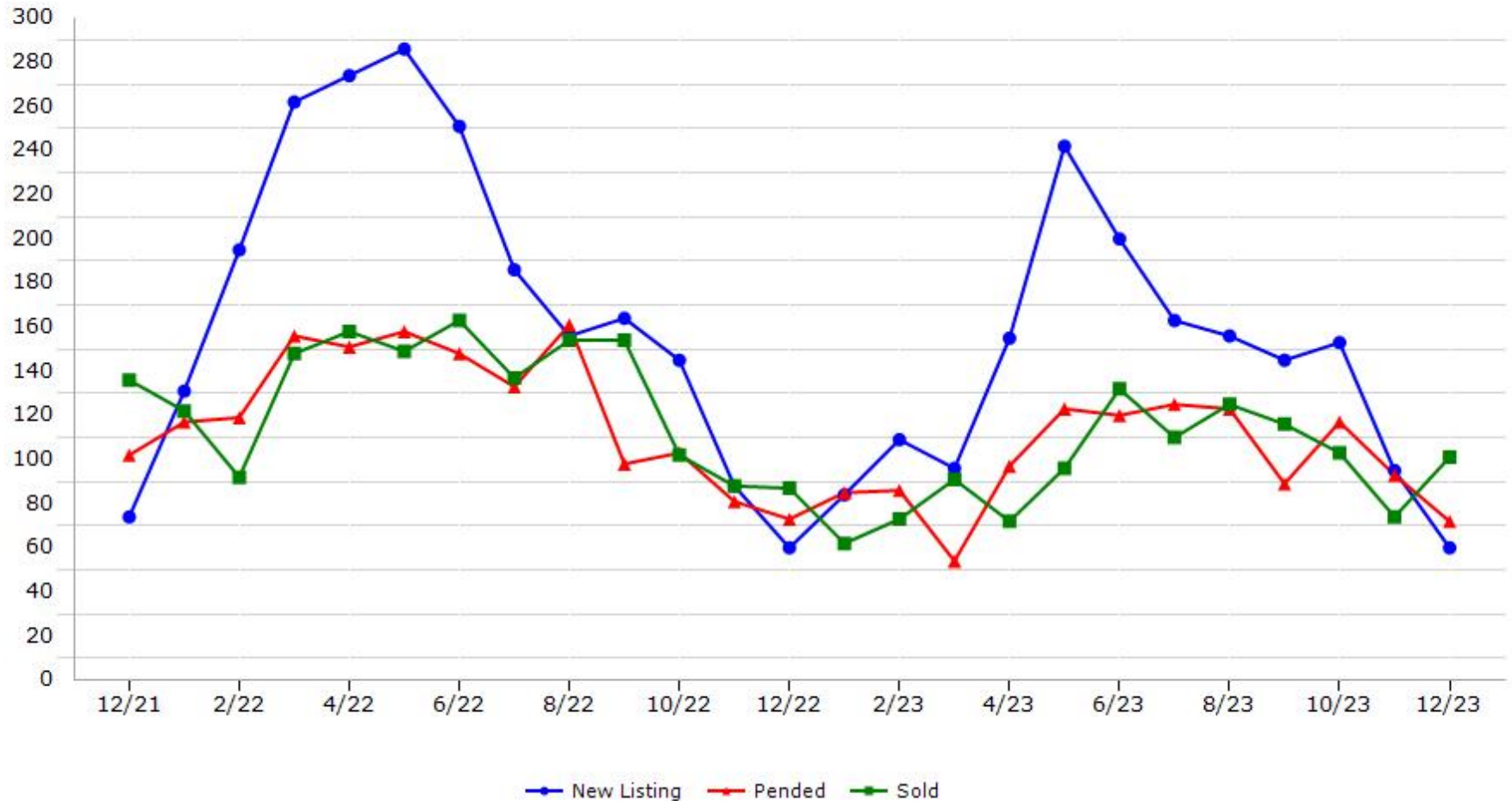
*Data represents Residential Property class only.

*Pended represents the number of properties that went into contract during the course of a calendar month.

Trending Report: Dec 2021 - Dec 2023



Nevada County



Data provided by **MetroList** THE TRUE SOURCE Powered by **TrendGraphix** YOUR HOME FOR REAL ESTATE DATA

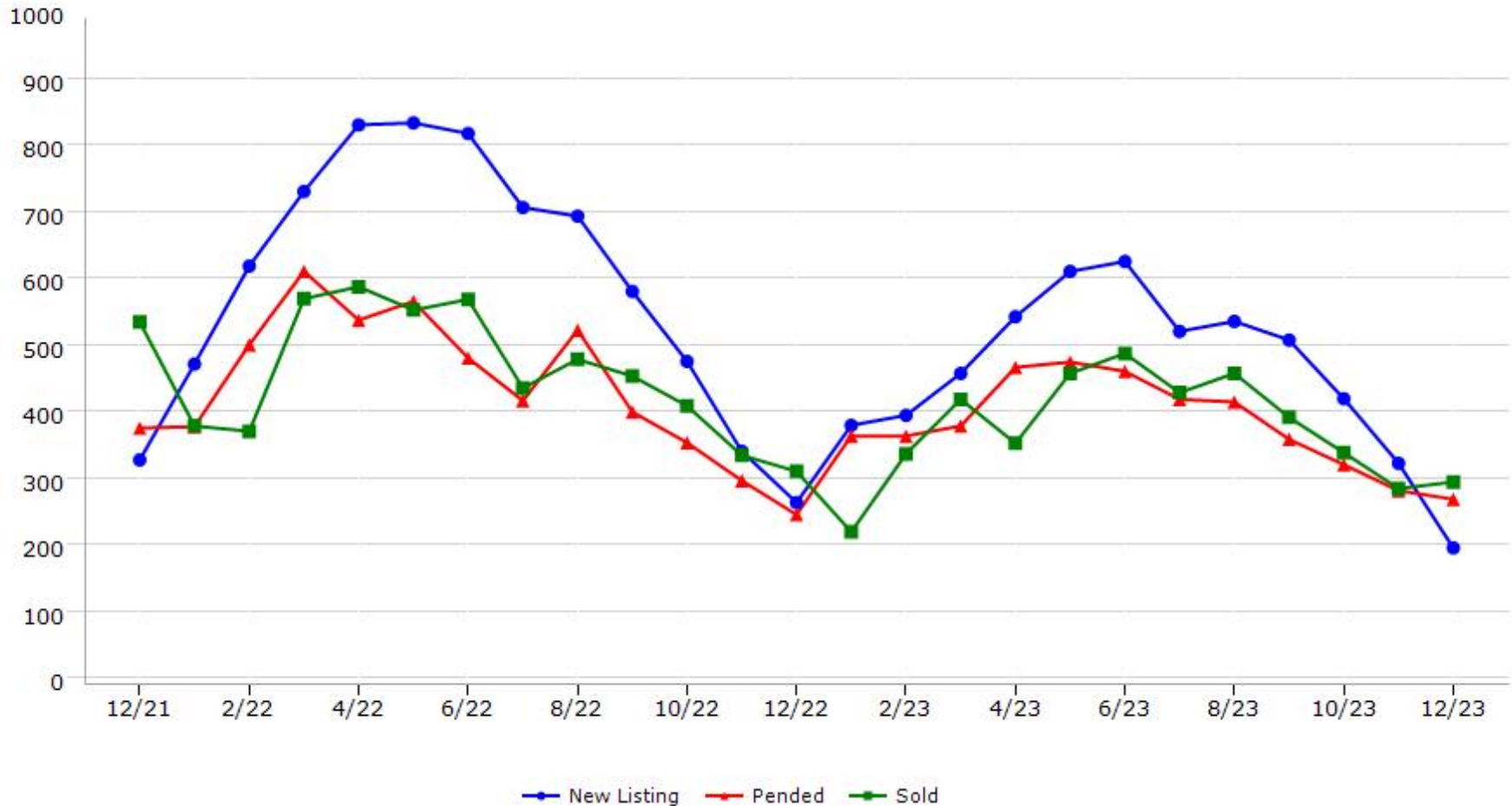
*Data represents Residential Property class only.

*Pended represents the number of properties that went into contract during the course of a calendar month.

Trending Report: Dec 2021 - Dec 2023



Placer County



Data provided by **MetroList** THE TRUE SOURCE Powered by **TrendGraphix** YOUR HOME FOR REAL ESTATE DATA

*Data represents Residential Property class only.

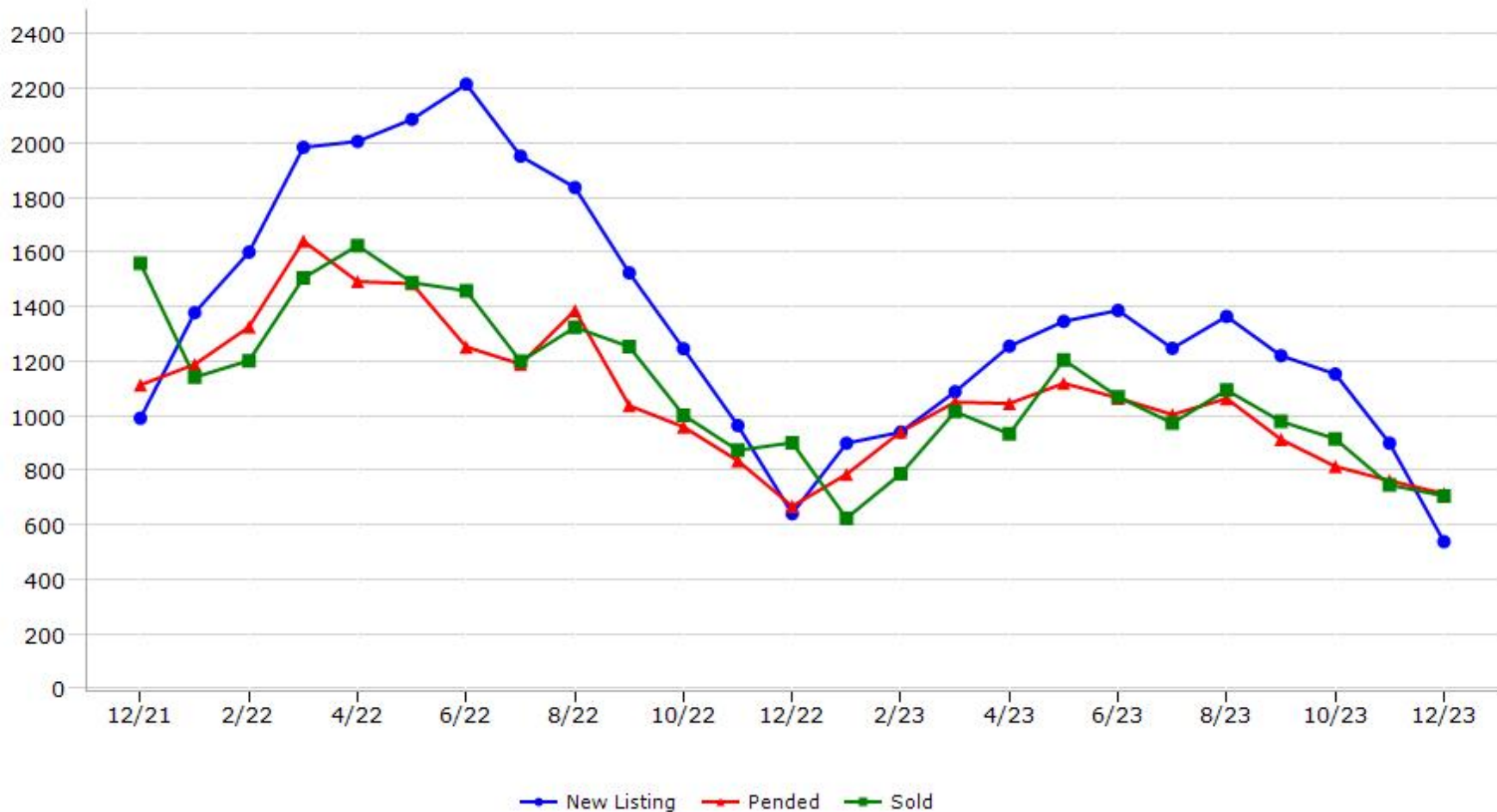
*Pended represents the number of properties that went into contract during the course of a calendar month.

Trending Report: Dec 2021 - Dec 2023



CALIFORNIA REAL ESTATE BROKERS, INC.

Sacramento County



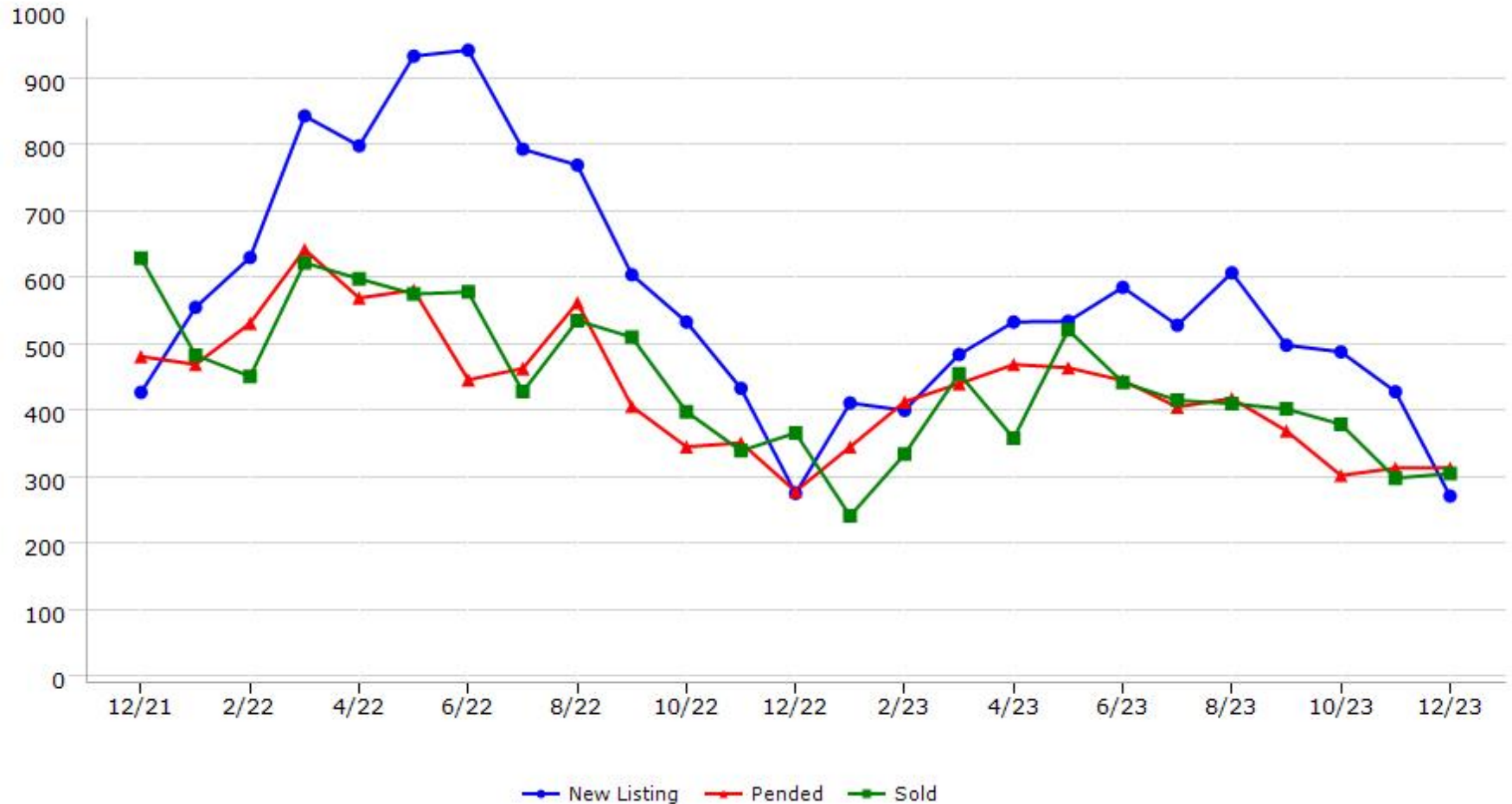
Data provided by **MetroList** THE TRUE SOURCE. Powered by **TrendGraphix** YOUR HOME FOR REAL ESTATE DATA.

*Data represents Residential Property class only.
*Pended represents the number of properties that went into contract during the course of a calendar month.

Trending Report: Dec 2021 - Dec 2023



San Joaquin County



Data provided by **MetroList** THE TRUE SOURCE Powered by **TrendGraphix** YOUR HOME FOR REAL ESTATE DATA

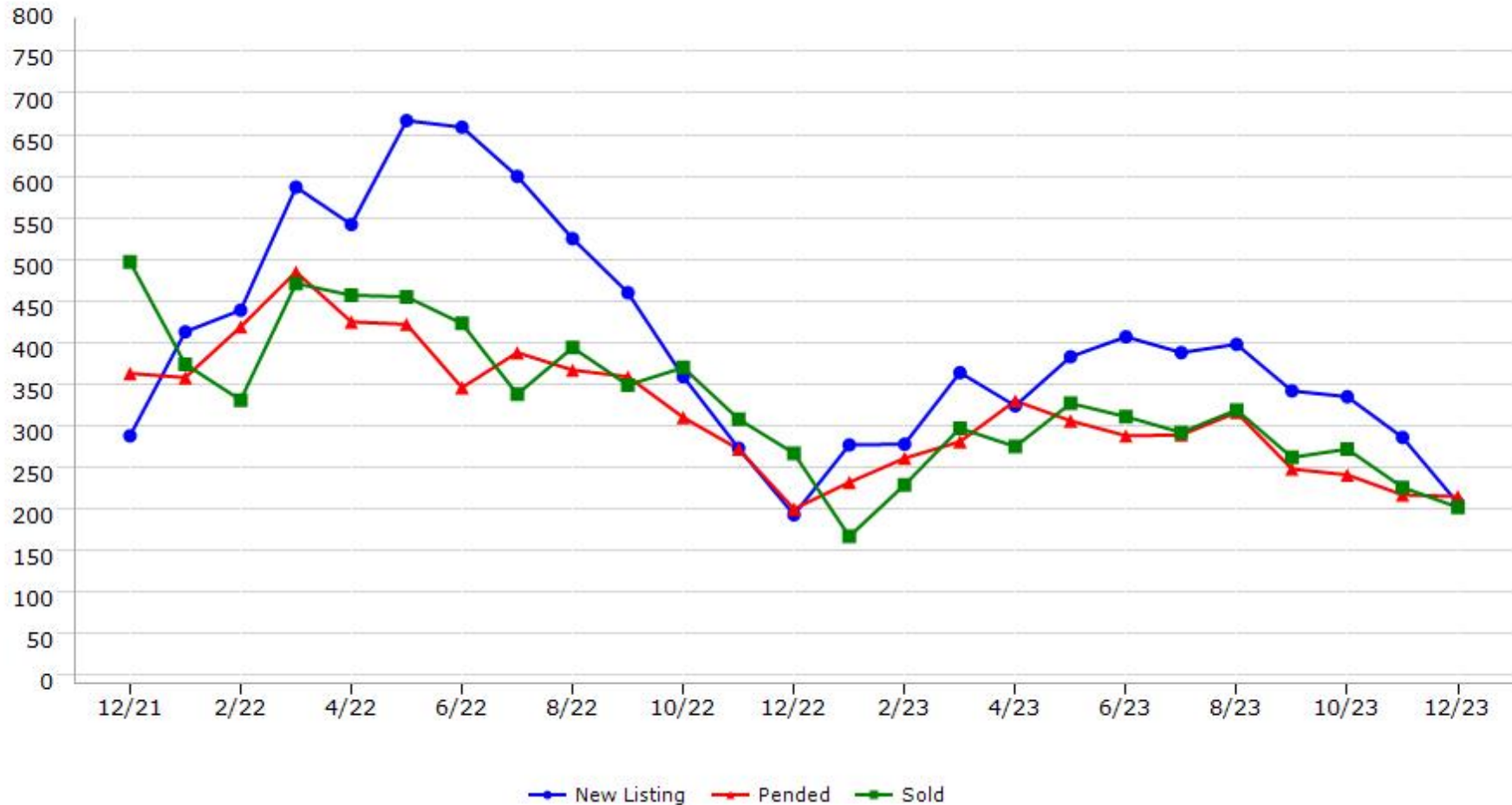
*Data represents Residential Property class only.

*Pended represents the number of properties that went into contract during the course of a calendar month.

Trending Report: Dec 2021 - Dec 2023



Stanislaus County



Data provided by **MetroList** THE TRUE SOURCE Powered by **TrendGraphix** YOUR HOME FOR REAL ESTATE DATA

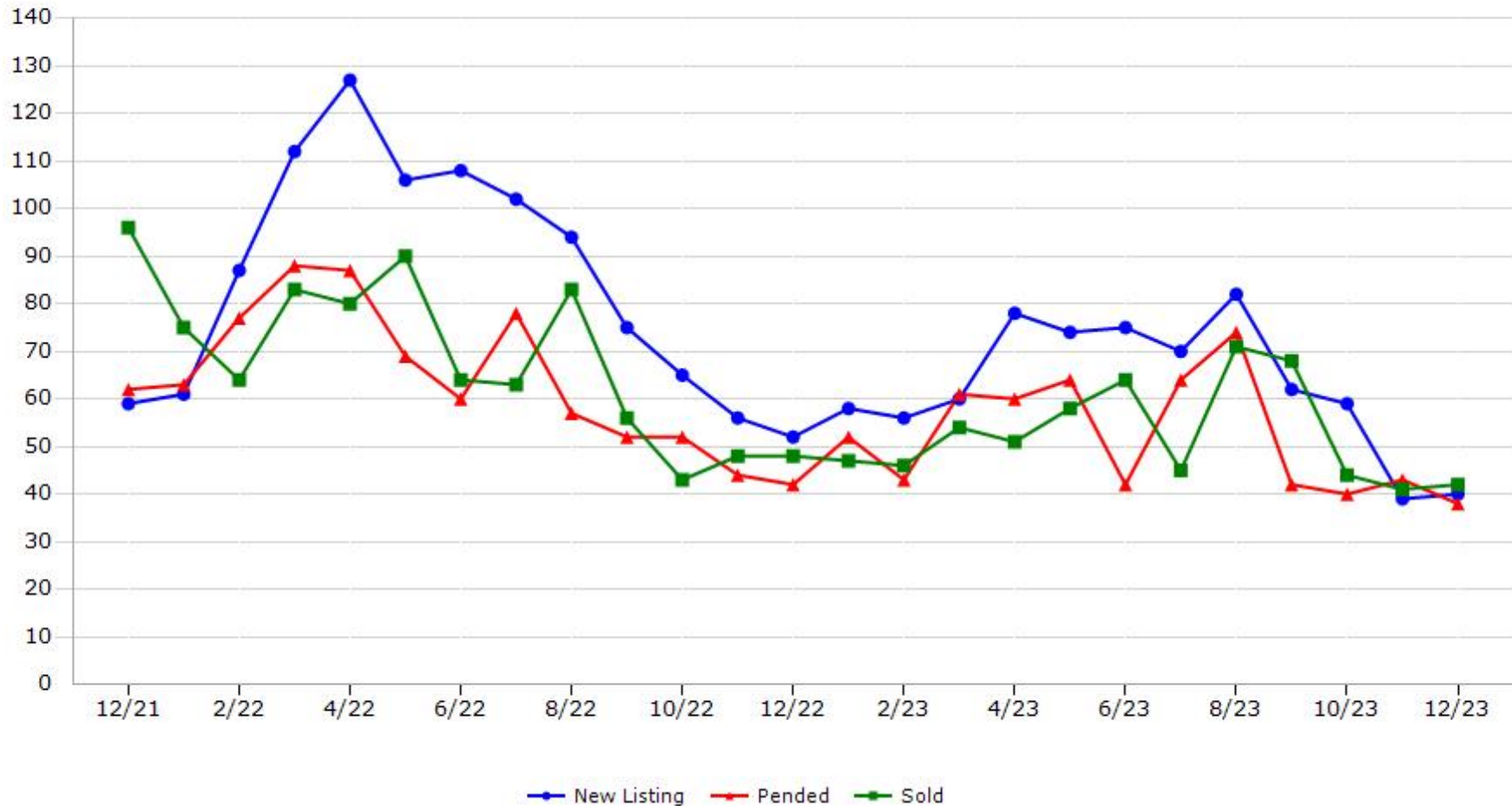
*Data represents Residential Property class only.

*Pended represents the number of properties that went into contract during the course of a calendar month.

Trending Report: Dec 2021 - Dec 2023



Sutter County



Data provided by **MetroList**® THE TRUE SOURCE | Powered by **TrendGraphix** YOUR HOME FOR REAL ESTATE DATA

*Data represents Residential Property class only.

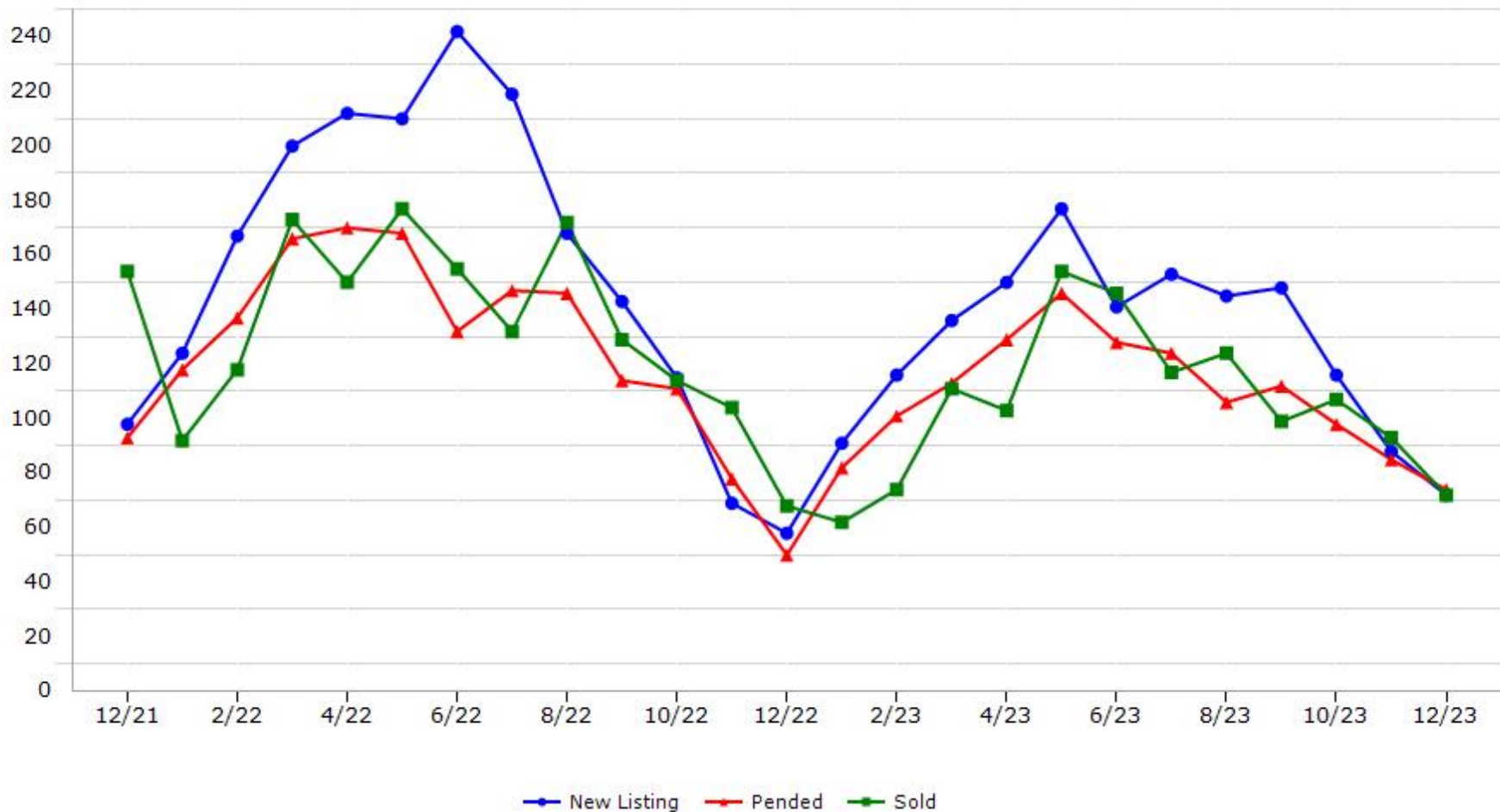
*Pended represents the number of properties that went into contract during the course of a calendar month.

Trending Report: Dec 2021 - Dec 2023



CALIFORNIA REAL ESTATE BROKERS, INC.

Yolo County



Data provided by **MetroList** THE TRUE SOURCE Powered by **TrendGraphix** YOUR HOME FOR REAL ESTATE DATA

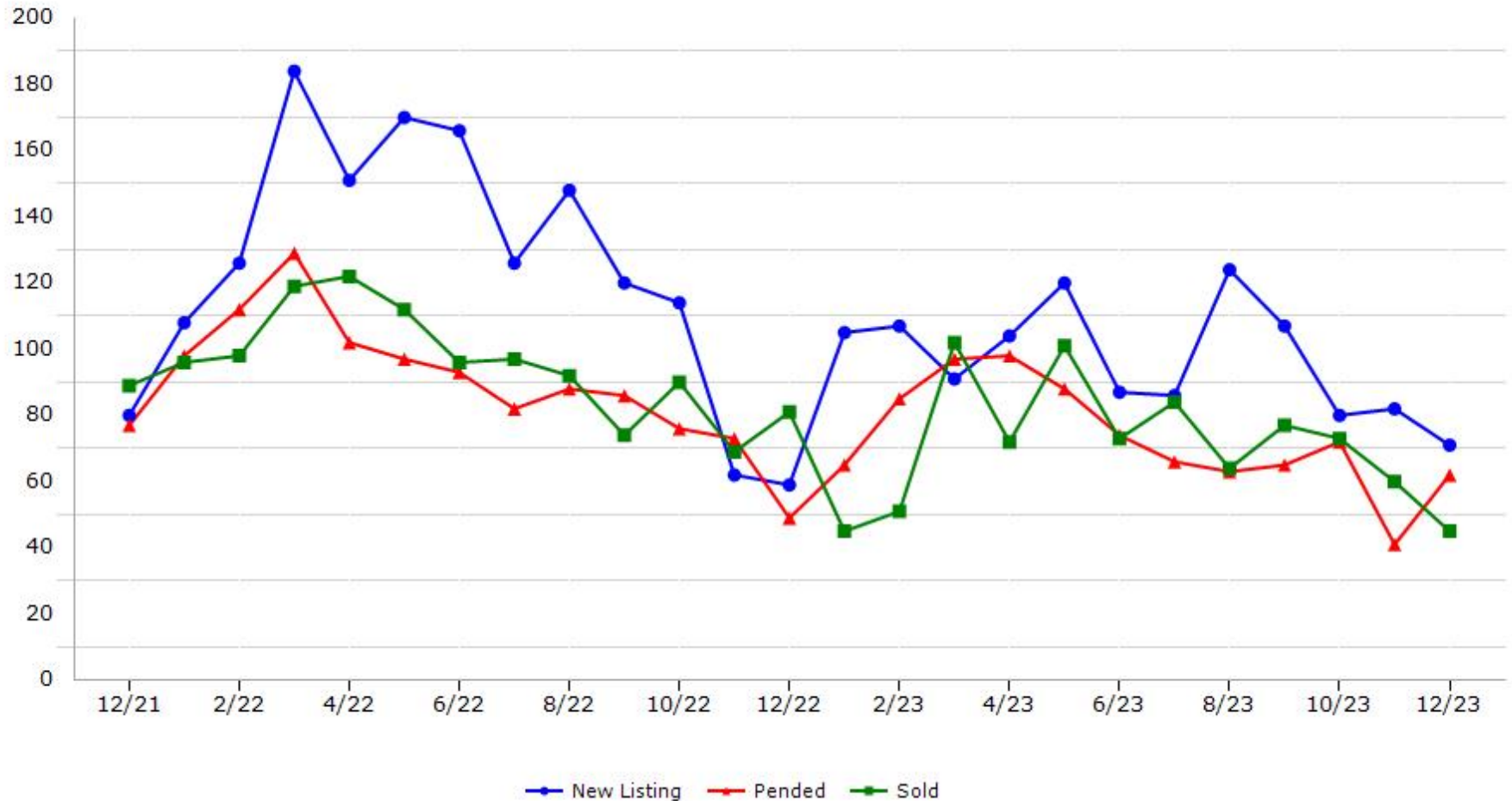
*Data represents Residential Property class only.

*Pended represents the number of properties that went into contract during the course of a calendar month.

Trending Report: Dec 2021 - Dec 2023



Yuba County



Data provided by **MetroList** THE TRUE SOURCE. Powered by **TrendGraphix** YOUR HOME FOR REAL ESTATE DATA.

*Data represents Residential Property class only.
*Pended represents the number of properties that went into contract during the course of a calendar month.