

Monthly Market Report - October 2022



CALIFORNIA REAL ESTATE BROKERS, INC.

MetroList All Areas

Oct 2022 vs Sep 2022

New Listing

3470 4229 -18% ↓

Pended

2855 2976 -4% ↓

Sold

2814 3385 -17% ↓

Avg DOM

35 33 6% ↑

Month of Inventory

2.6 2.6 0%

New Listing By County

Oct 2022 vs Sep 2022

Amador	60	69	-13%	↓
Butte	35	43	-19%	↓
Colusa	11	10	10%	↑
El Dorado	217	262	-17%	↓
Merced	147	160	-8%	↓
Nevada	131	161	-19%	↓
Placer	467	587	-20%	↓
Sacramento	1222	1521	-20%	↓
San Joaquin	531	612	-13%	↓
Stanislaus	361	467	-23%	↓
Sutter	64	75	-15%	↓
Yolo	112	143	-22%	↓
Yuba	112	119	-6%	↓

Pended By County

Oct 2022 vs Sep 2022

Amador	39	56	-30%	↓
Butte	19	26	-27%	↓
Colusa	8	14	-43%	↓
El Dorado	145	167	-13%	↓
Merced	114	106	8%	↑
Nevada	108	102	6%	↑
Placer	389	411	-5%	↓
Sacramento	1035	1056	-2%	↓
San Joaquin	396	417	-5%	↓
Stanislaus	347	371	-6%	↓
Sutter	55	51	8%	↑
Yolo	117	114	3%	↑
Yuba	83	85	-2%	↓

Sold By County

Oct 2022 vs Sep 2022

Amador	51	59	-14%	↓
Butte	20	20	0%	
Colusa	9	8	12%	↑
El Dorado	158	197	-20%	↓
Merced	121	120	1%	↑
Nevada	100	153	-35%	↓
Placer	401	454	-12%	↓
Sacramento	961	1254	-23%	↓
San Joaquin	385	509	-24%	↓
Stanislaus	371	355	5%	↑
Sutter	42	56	-25%	↓
Yolo	111	127	-13%	↓
Yuba	84	73	15%	↑

Data provided by **MetroList**
THE TRUE SOURCE

Powered by **TrendGraphix**
YOUR HOME FOR REAL ESTATE DATA

*Data represents Residential Property class only.

*Pended represents the number of properties that went into contract during the course of a calendar month.

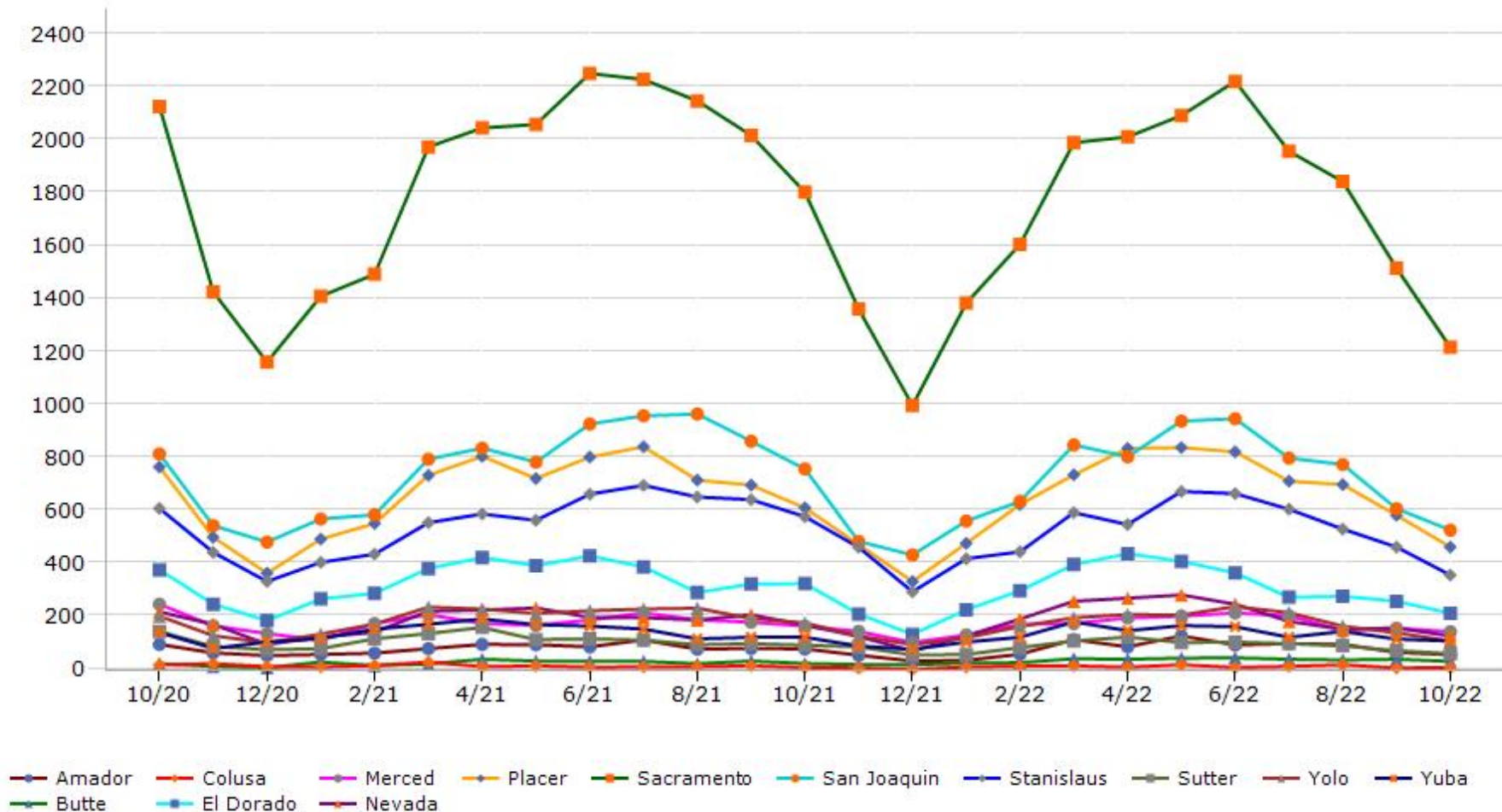
*Month of Inventory is calculated by dividing the number of homes that went into contract in a given calendar month into the number of homes that were active at the end of a given calendar month.

Trending Report: Oct 2020 - Oct 2022



CALIFORNIA REAL ESTATE BROKERS, INC.

New Listing



Data provided by **MetroList**[®]
THE TRUE SOURCE

Powered by **TrendGraphix**
YOUR HOME FOR REAL ESTATE DATA

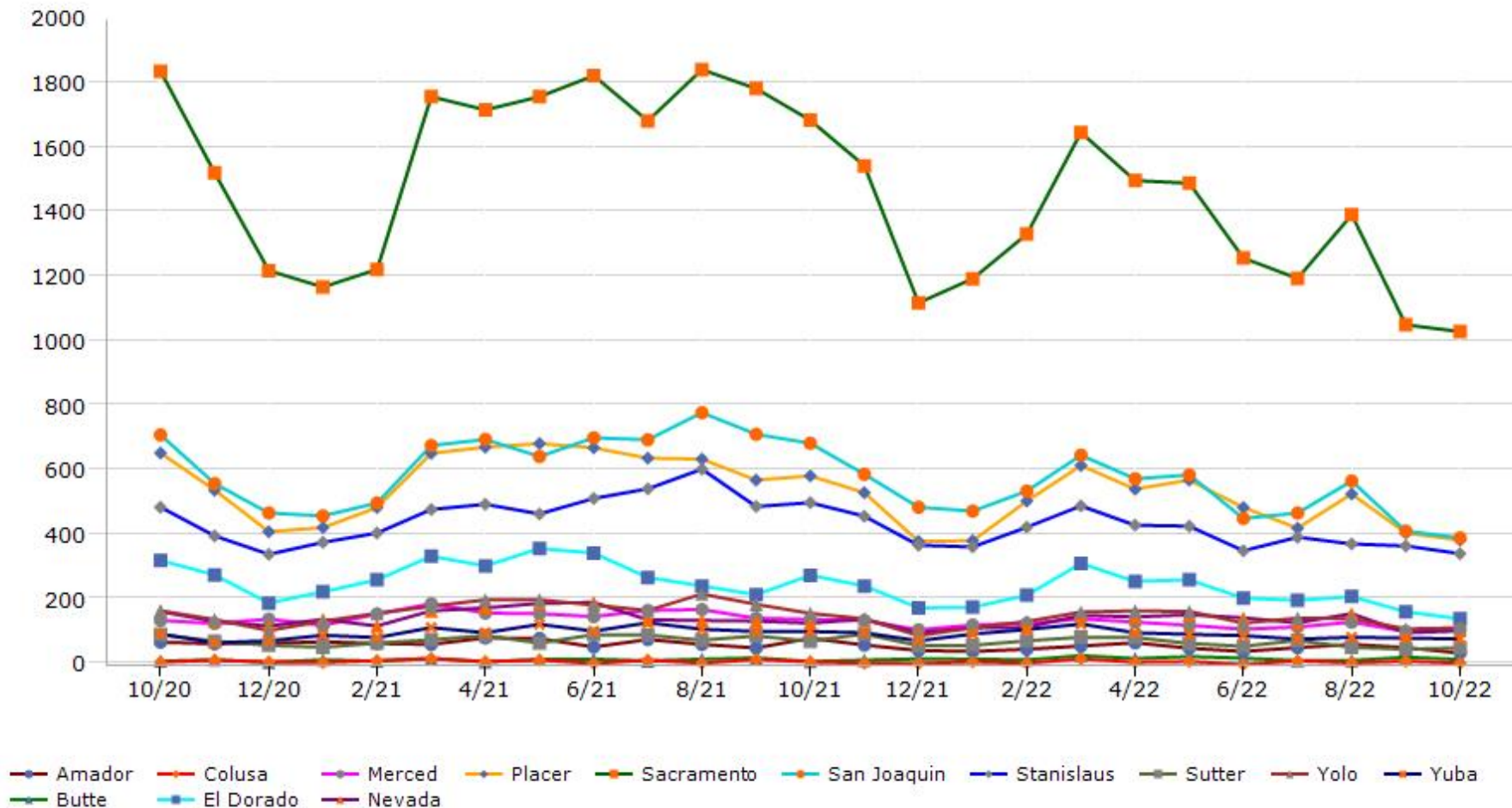
*Data represents Residential Property class only.

Trending Report: Oct 2020 - Oct 2022



CALIFORNIA REAL ESTATE BROKERS, INC.

Pended



Data provided by **MetroList**[®]
THE TRUE SOURCE

Powered by **TrendGraphix**
YOUR HOME FOR REAL ESTATE DATA

*Data represents Residential Property class only.

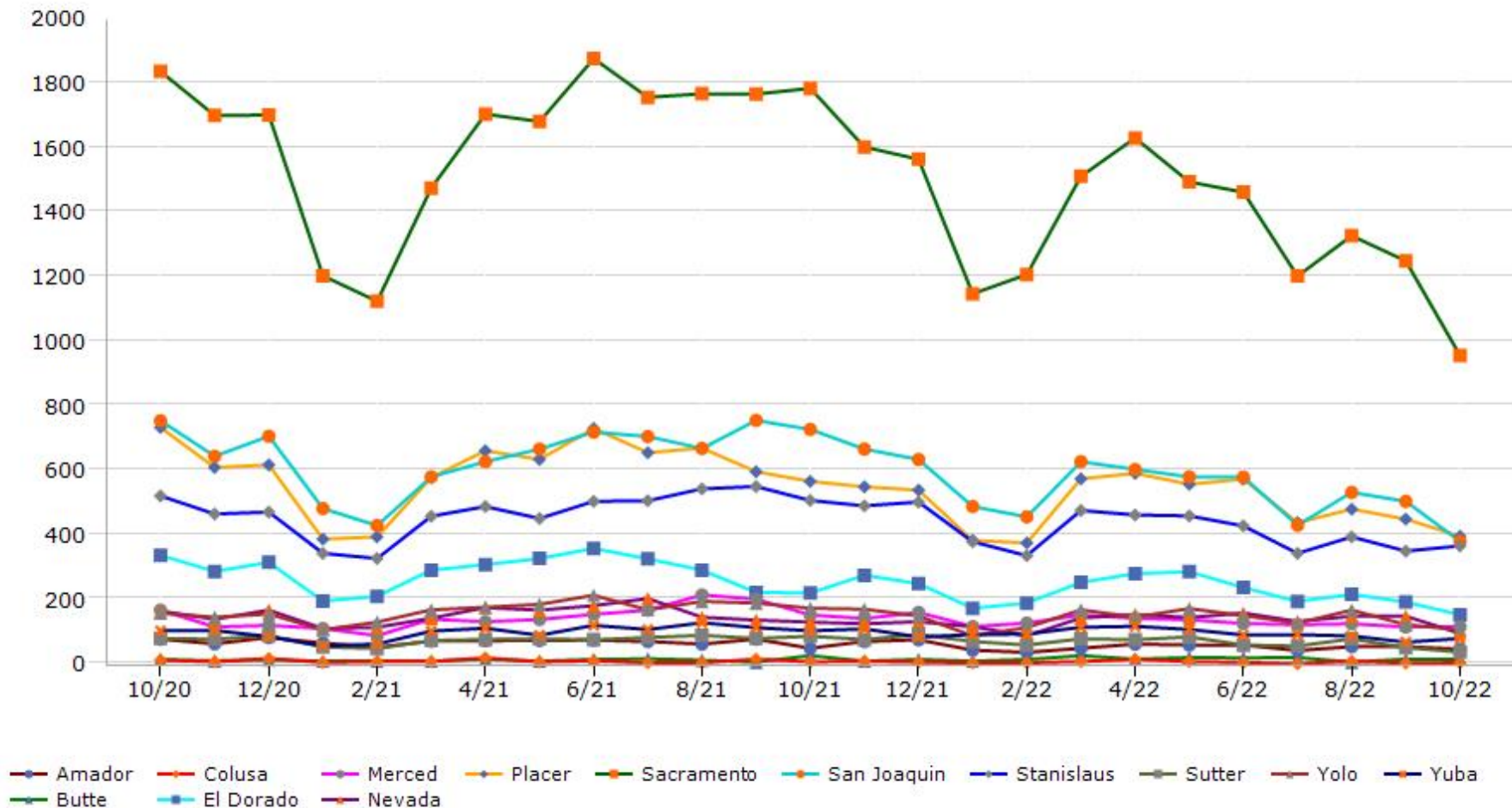
*Pended represents the number of properties that went into contract during the course of a calendar month.

Trending Report: Oct 2020 - Oct 2022



CALIFORNIA REAL ESTATE BROKERS, INC.

Sold



Data provided by **MetroList**
THE TRUE SOURCE

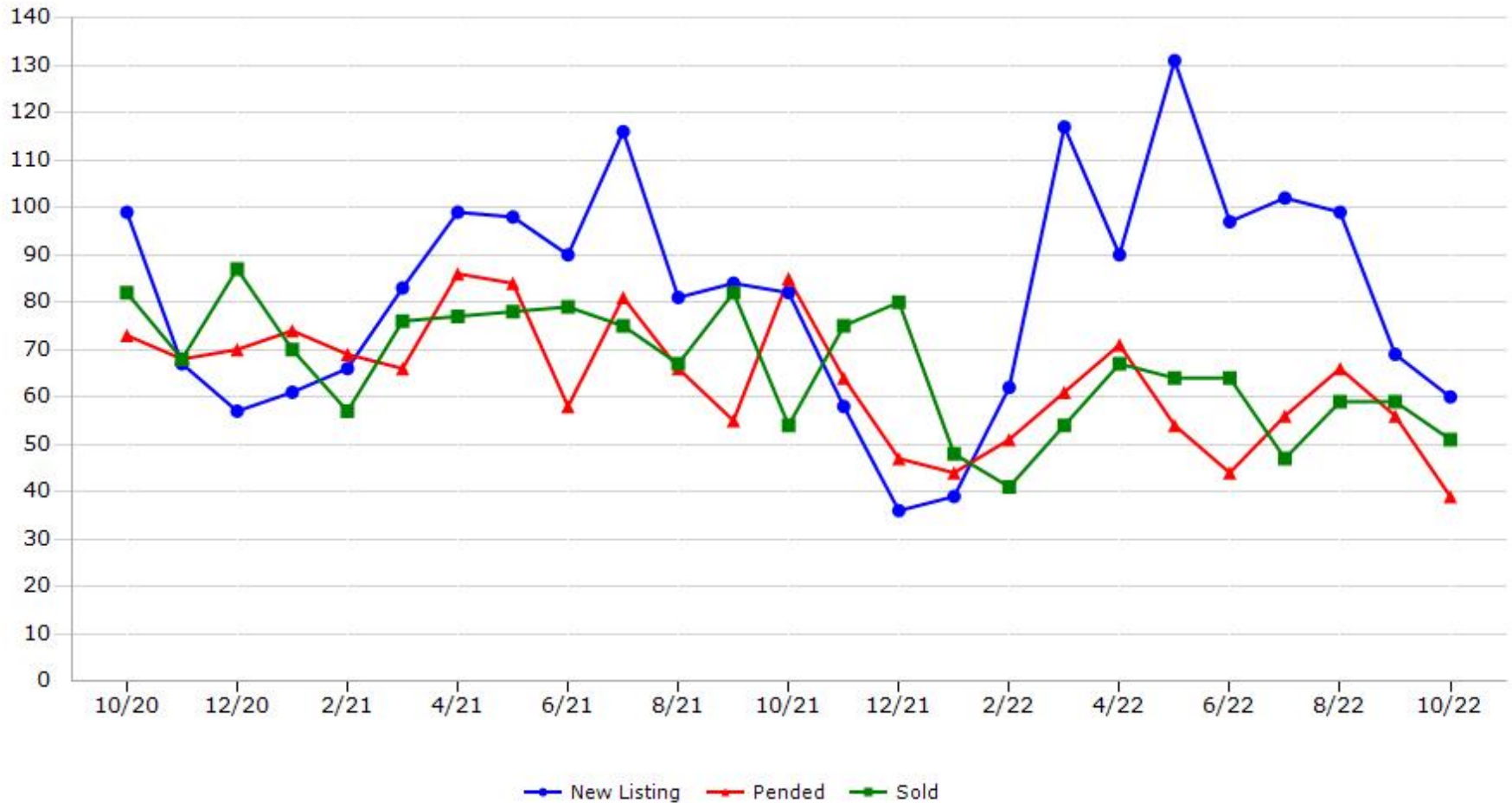
Powered by **TrendGraphix**
YOUR HOME FOR REAL ESTATE DATA

*Data represents Residential Property class only.

Trending Report: Oct 2020 - Oct 2022



Amador County



Data provided by **MetroList**[®] THE TRUE SOURCE Powered by **TrendGraphix** YOUR HOME FOR REAL ESTATE DATA

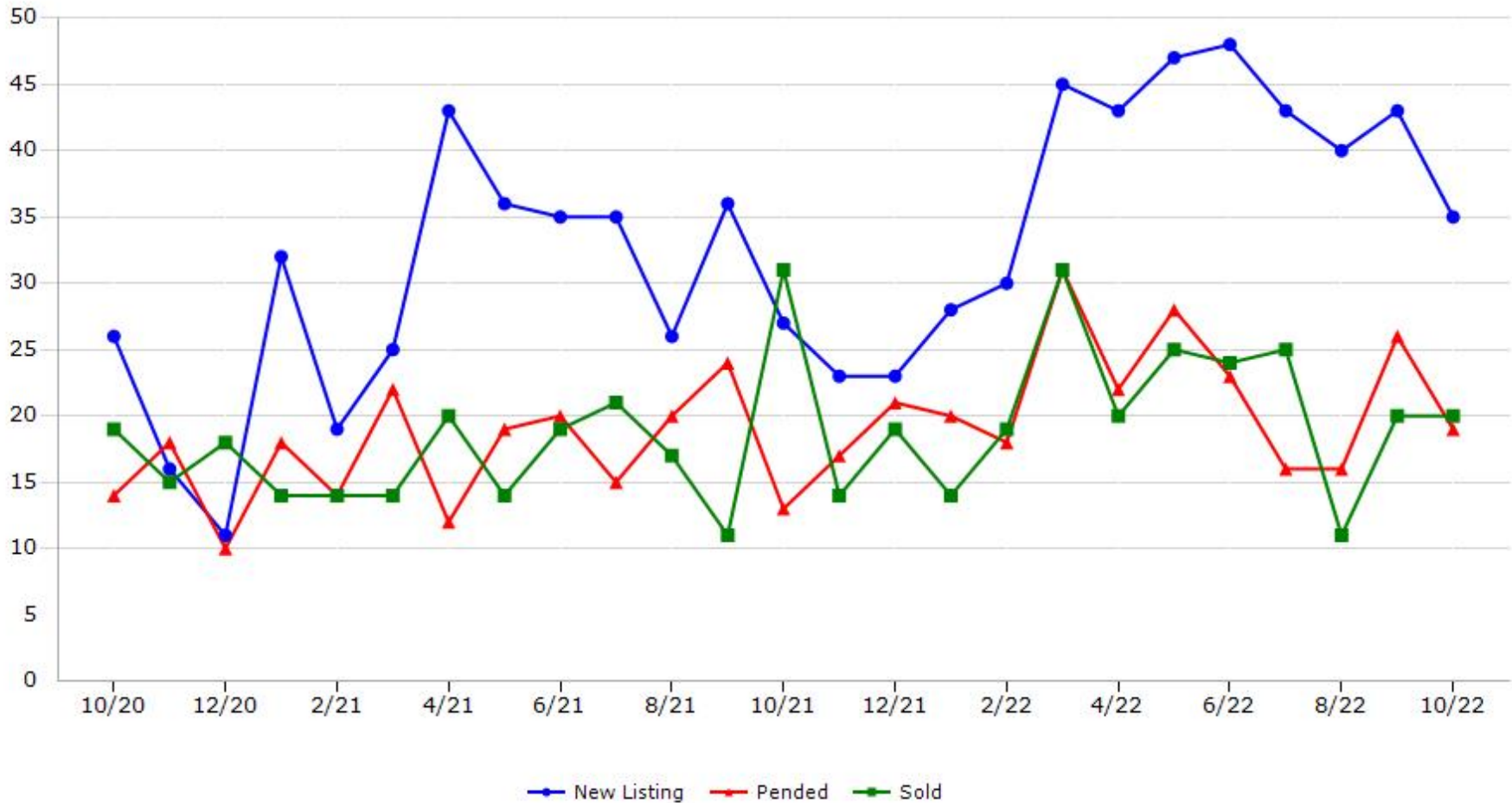
*Data represents Residential Property class only.

*Pended represents the number of properties that went into contract during the course of a calendar month.

Trending Report: Oct 2020 - Oct 2022



Butte County



Data provided by **MetroList**® THE TRUE SOURCE | Powered by **TrendGraphix** YOUR HOME FOR REAL ESTATE DATA

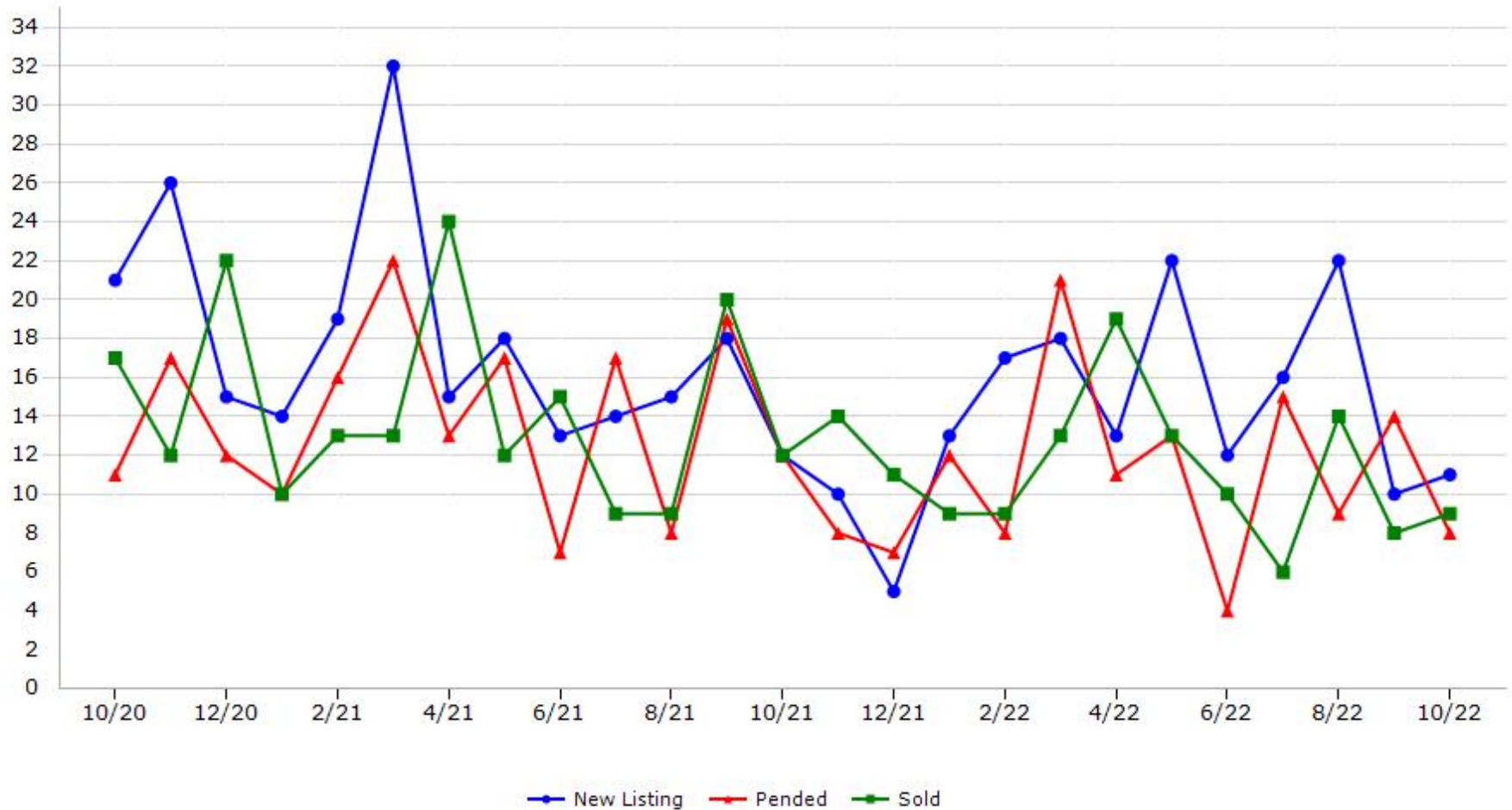
*Data represents Residential Property class only.

*Pended represents the number of properties that went into contract during the course of a calendar month.

Trending Report: Oct 2020 - Oct 2022



Colusa County



Data provided by **MetroList**® THE TRUE SOURCE Powered by **TrendGraphix** YOUR HOME FOR REAL ESTATE DATA

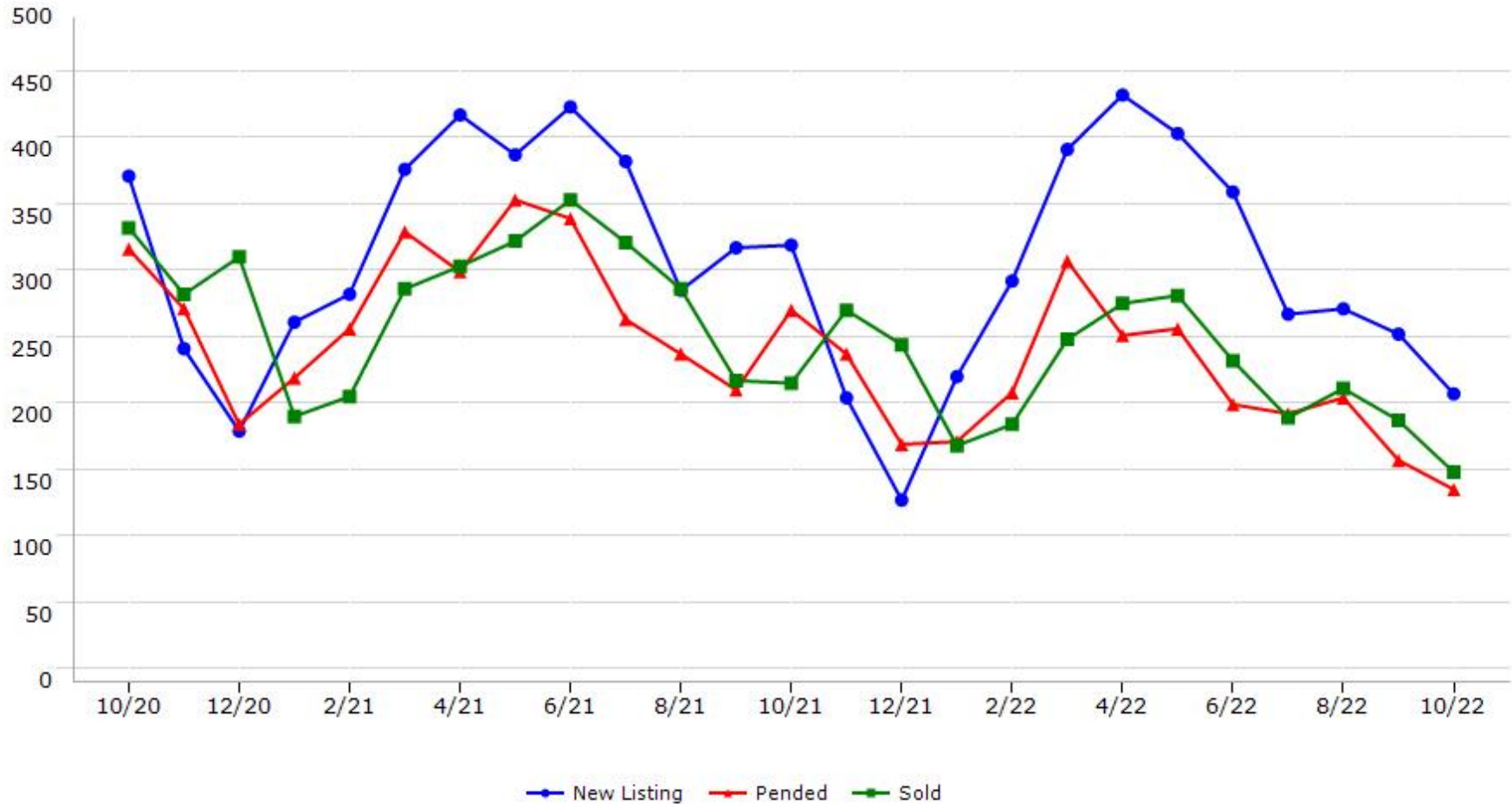
*Data represents Residential Property class only.

*Pended represents the number of properties that went into contract during the course of a calendar month.

Trending Report: Oct 2020 - Oct 2022



El Dorado County



Data provided by **MetroList**® THE TRUE SOURCE | Powered by **TrendGraphix** YOUR HOME FOR REAL ESTATE DATA

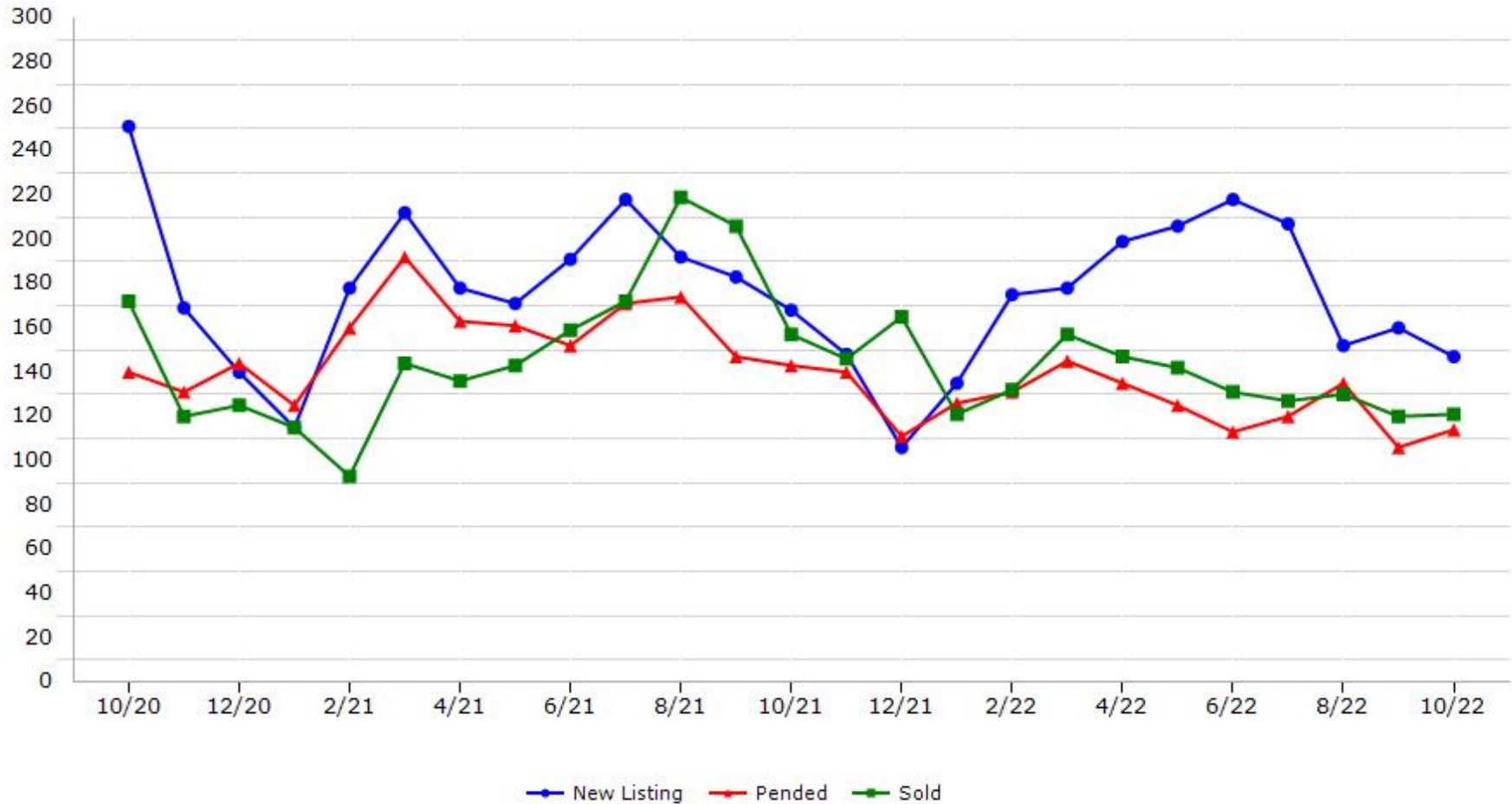
*Data represents Residential Property class only.

*Pended represents the number of properties that went into contract during the course of a calendar month.

Trending Report: Oct 2020 - Oct 2022



Merced County



Data provided by **MetroList**® THE TRUE SOURCE | Powered by **TrendGraphix** YOUR HOME FOR REAL ESTATE DATA

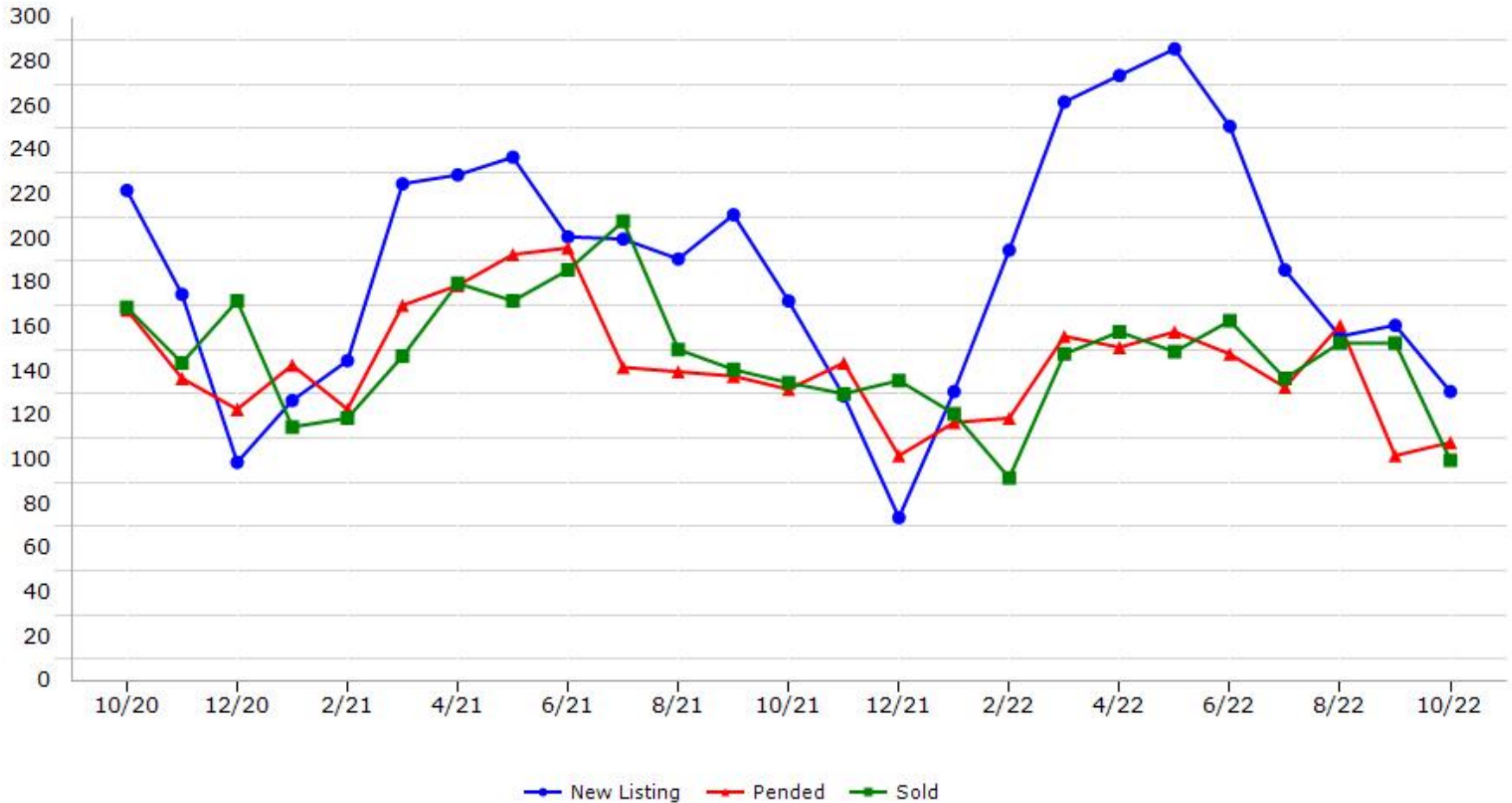
*Data represents Residential Property class only.

*Pended represents the number of properties that went into contract during the course of a calendar month.

Trending Report: Oct 2020 - Oct 2022



Nevada County



Data provided by **MetroList**® THE TRUE SOURCE Powered by **TrendGraphix** YOUR HOME FOR REAL ESTATE DATA

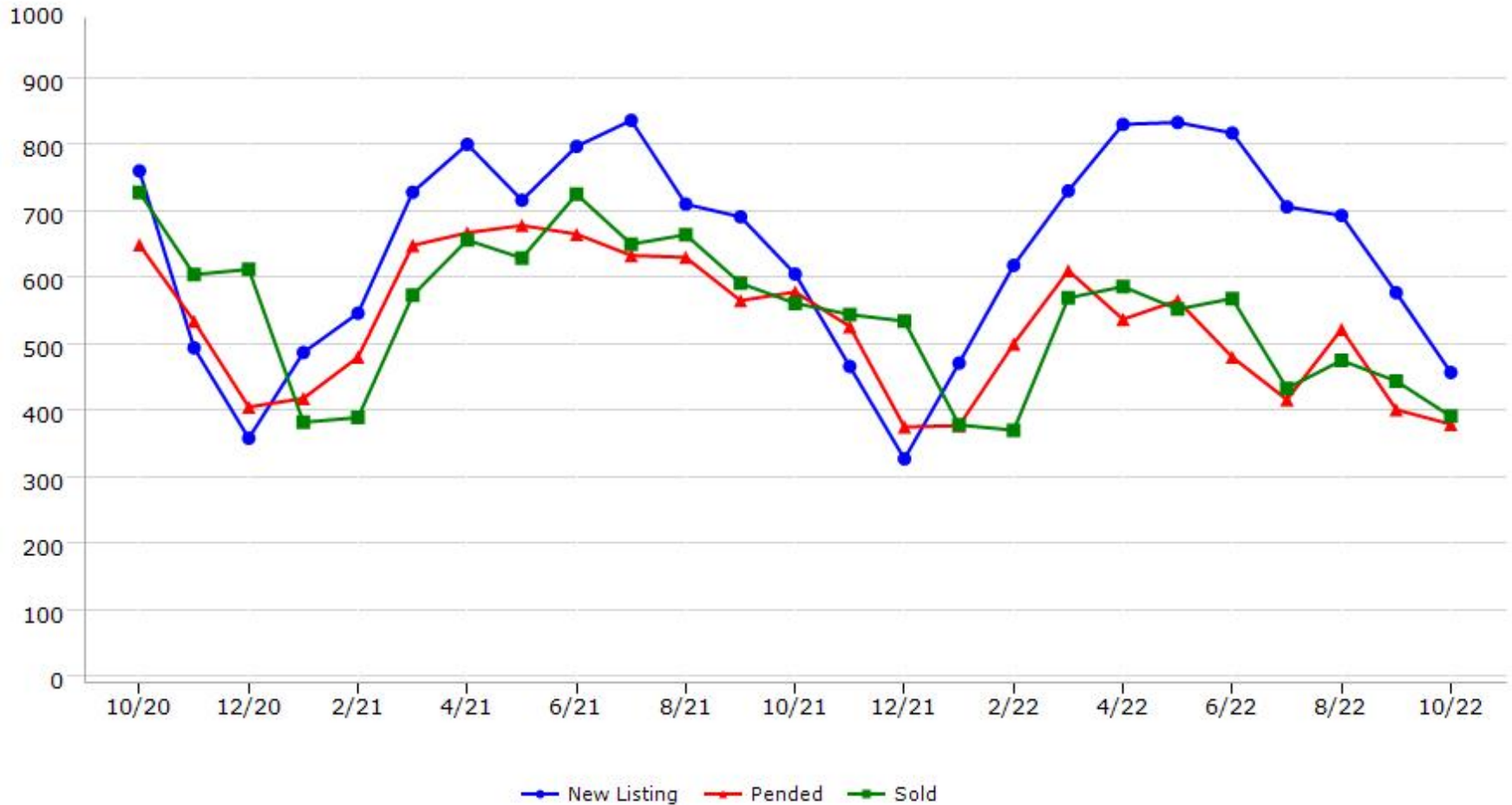
*Data represents Residential Property class only.

*Pended represents the number of properties that went into contract during the course of a calendar month.

Trending Report: Oct 2020 - Oct 2022



Placer County



Data provided by **MetroList**® THE TRUE SOURCE Powered by **TrendGraphix** YOUR HOME FOR REAL ESTATE DATA

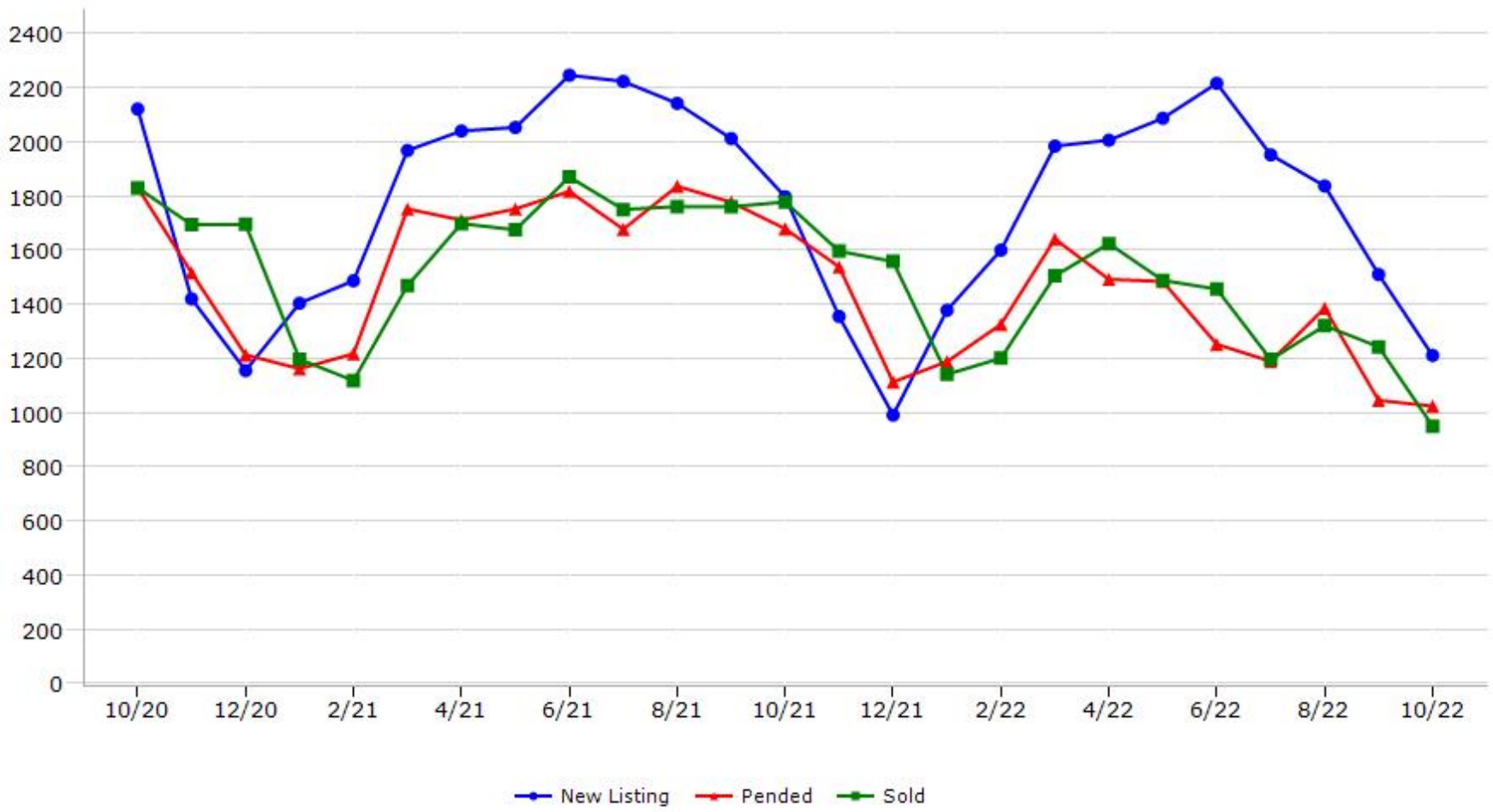
*Data represents Residential Property class only.

*Pended represents the number of properties that went into contract during the course of a calendar month.

Trending Report: Oct 2020 - Oct 2022



Sacramento County



Data provided by **MetroList**[®] THE TRUE SOURCE | Powered by **TrendGraphix** YOUR HOME FOR REAL ESTATE DATA

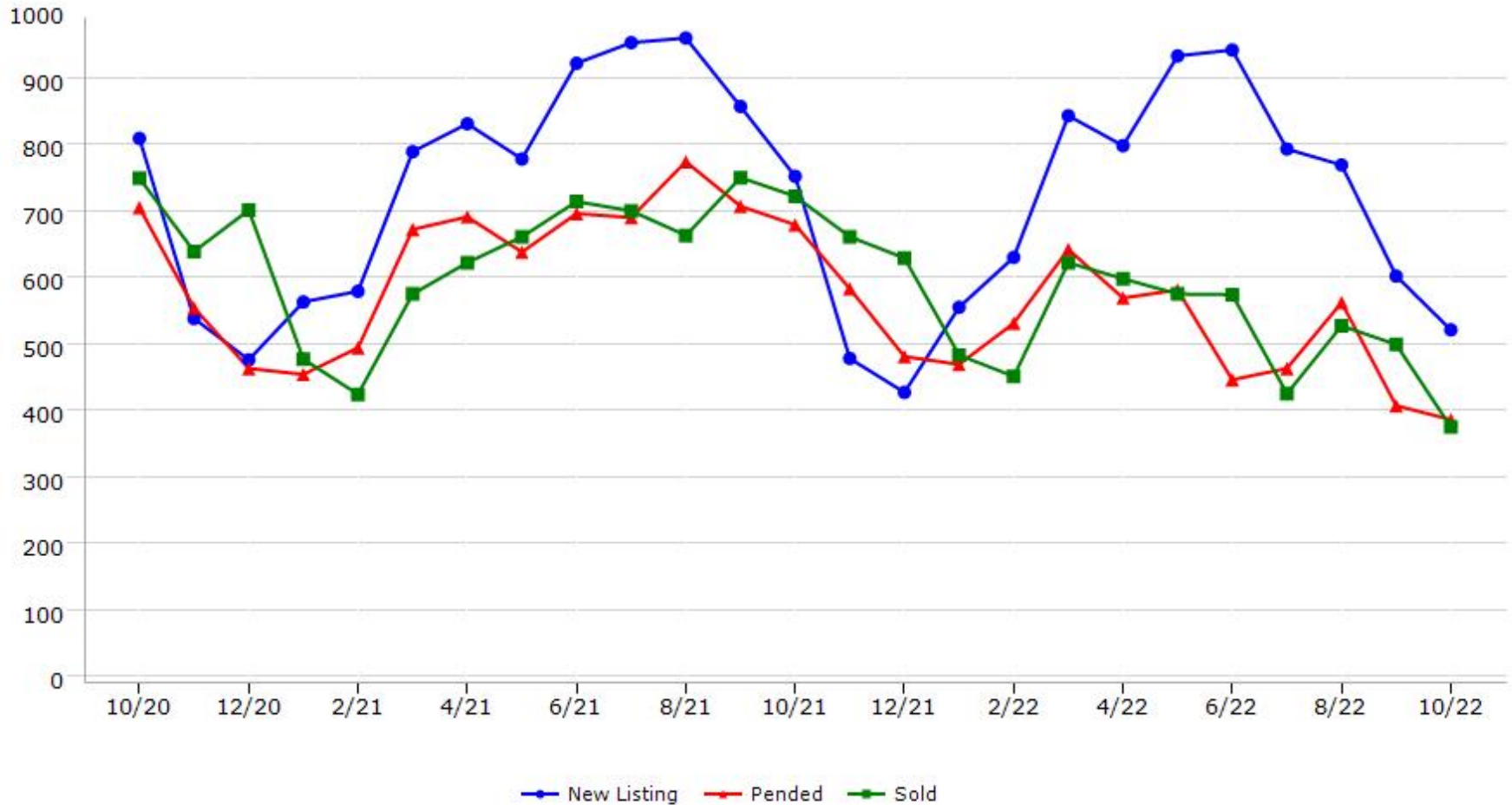
*Data represents Residential Property class only.

*Pended represents the number of properties that went into contract during the course of a calendar month.

Trending Report: Oct 2020 - Oct 2022



San Joaquin County



Data provided by **MetroList**® THE TRUE SOURCE | Powered by **TrendGraphix** YOUR HOME FOR REAL ESTATE DATA

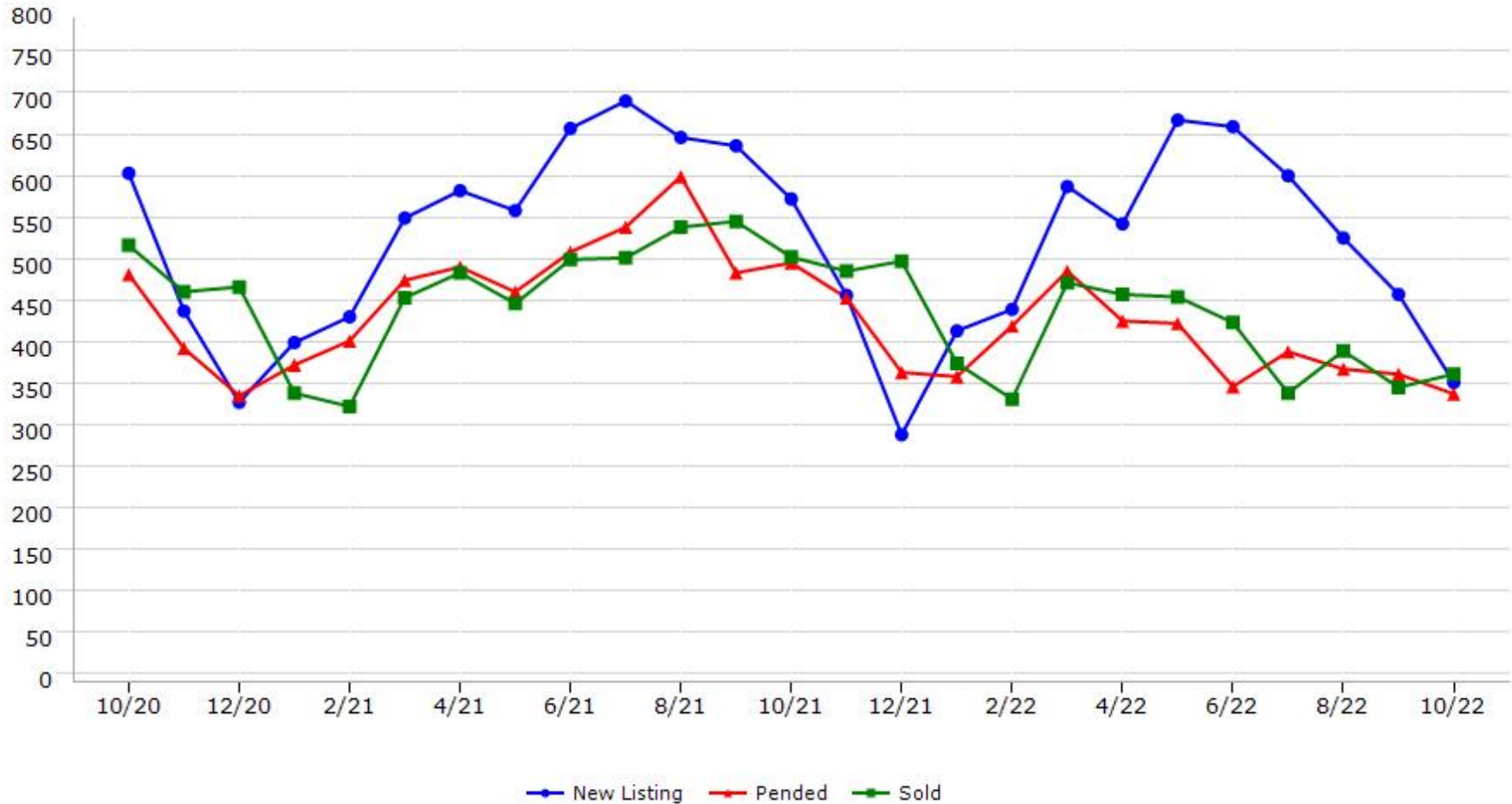
*Data represents Residential Property class only.

*Pended represents the number of properties that went into contract during the course of a calendar month.

Trending Report: Oct 2020 - Oct 2022



Stanislaus County



Data provided by **MetroList**® THE TRUE SOURCE | Powered by **TrendGraphix** YOUR HOME FOR REAL ESTATE DATA

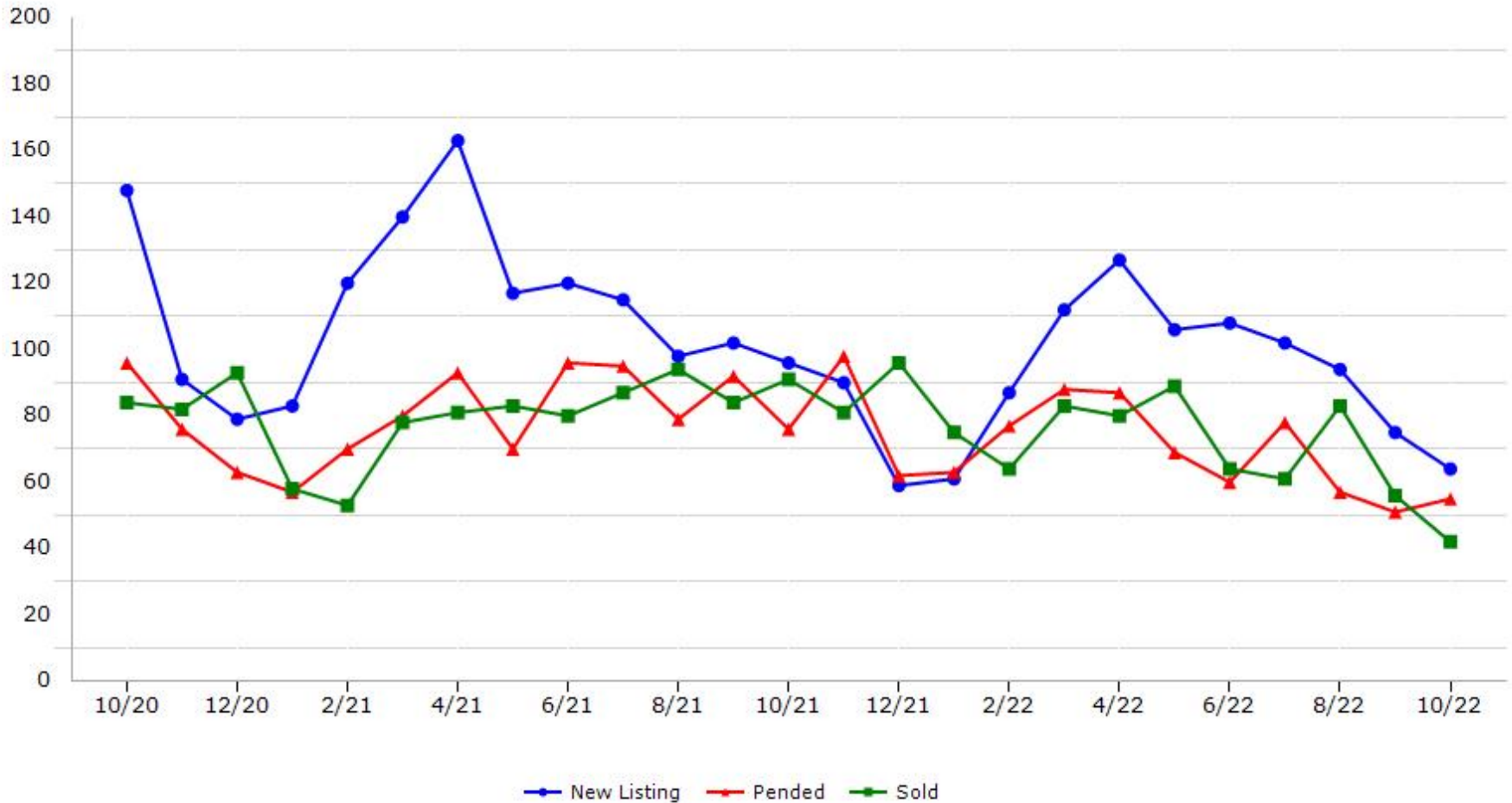
*Data represents Residential Property class only.

*Pended represents the number of properties that went into contract during the course of a calendar month.

Trending Report: Oct 2020 - Oct 2022



Sutter County



Data provided by **MetroList**® THE TRUE SOURCE Powered by **TrendGraphix** YOUR HOME FOR REAL ESTATE DATA

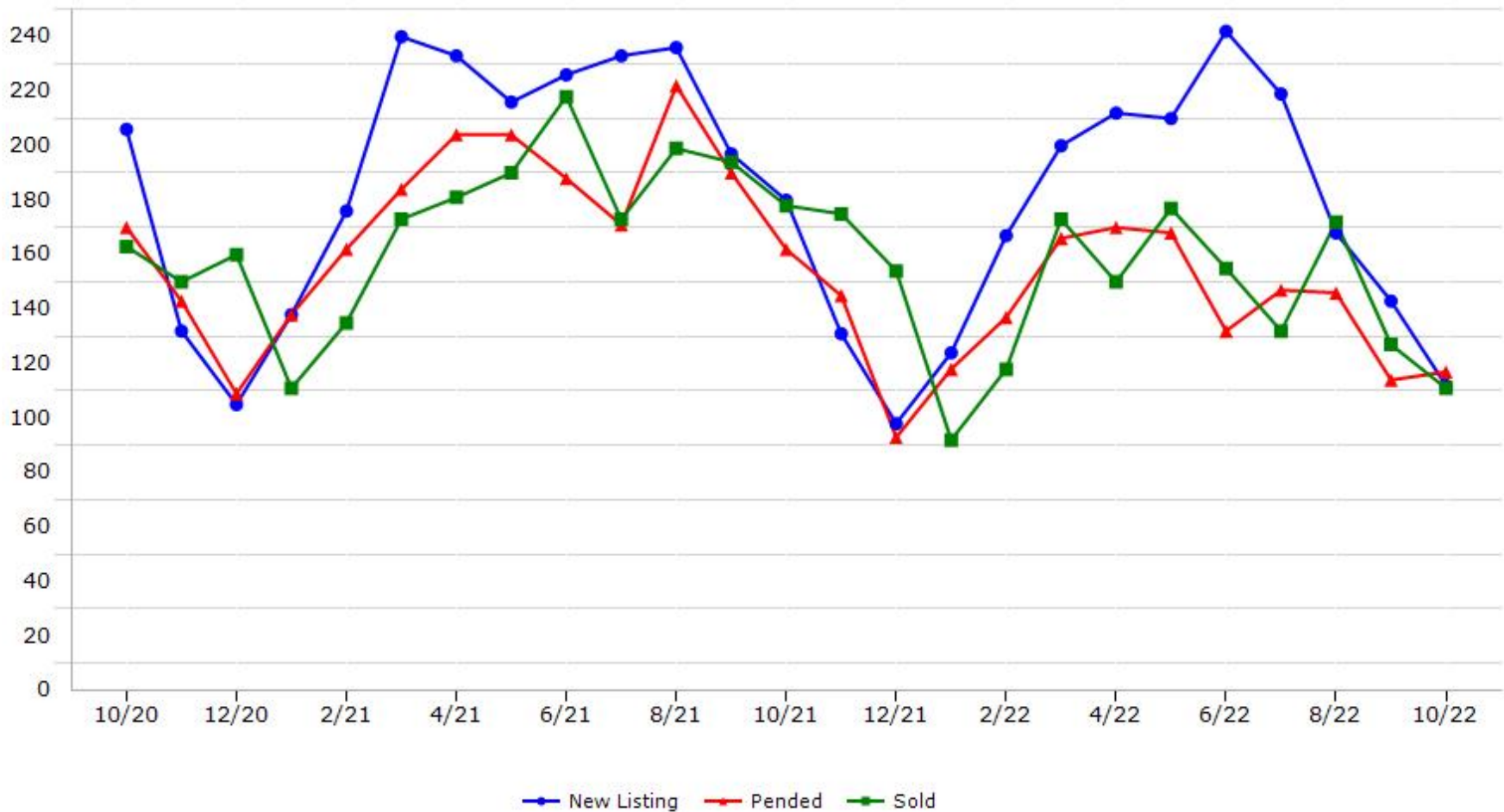
*Data represents Residential Property class only.

*Pended represents the number of properties that went into contract during the course of a calendar month.

Trending Report: Oct 2020 - Oct 2022



Yolo County



Data provided by **MetroList**® THE TRUE SOURCE | Powered by **TrendGraphix** YOUR HOME FOR REAL ESTATE DATA

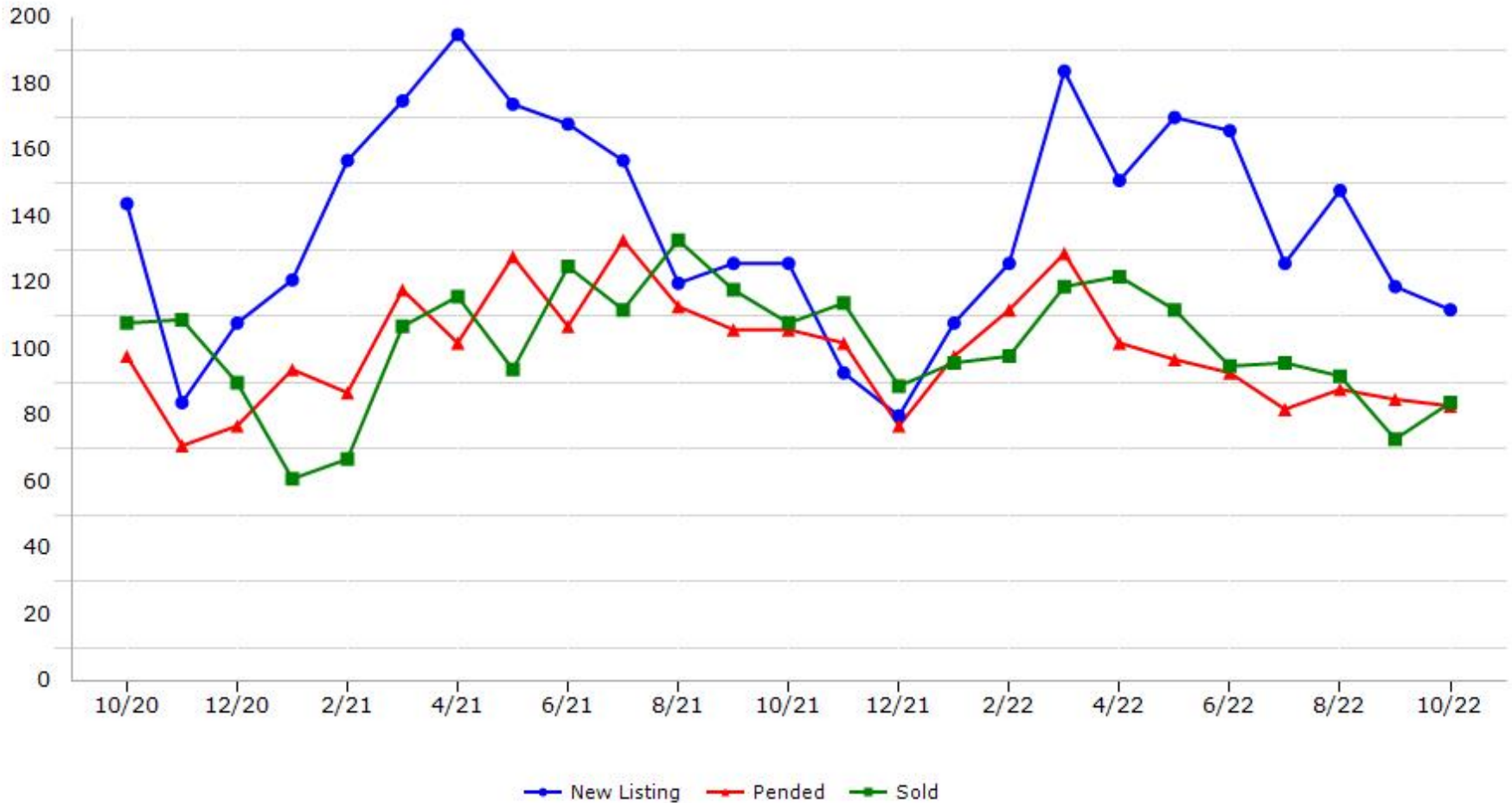
*Data represents Residential Property class only.

*Pended represents the number of properties that went into contract during the course of a calendar month.

Trending Report: Oct 2020 - Oct 2022



Yuba County



Data provided by **MetroList**® THE TRUE SOURCE | Powered by **TrendGraphix** YOUR HOME FOR REAL ESTATE DATA

*Data represents Residential Property class only.
*Pended represents the number of properties that went into contract during the course of a calendar month.