

# Monthly Market Report - July 2022



CALIFORNIA REAL ESTATE BROKERS, INC.

## MetroList All Areas

Jul 2022 vs Jun 2022

### New Listing

5388 6313 -15% ↓

### Pended

3638 3538 3% ↑

### Sold

3258 4103 -21% ↓

### Avg DOM

21 17 24% ↑

### Month of Inventory

2.4 2.1 14% ↑

## New Listing By County

Jul 2022 vs Jun 2022

Amador	101	96	5%	↑
Butte	41	44	-7%	↓
Colusa	16	12	33%	↑
El Dorado	262	361	-27%	↓
Merced	194	190	2%	↑
Nevada	176	249	-29%	↓
Placer	683	817	-16%	↓
Sacramento	1854	2174	-15%	↓
San Joaquin	720	891	-19%	↓
Stanislaus	578	637	-9%	↓
Sutter	94	108	-13%	↓
Yolo	210	230	-9%	↓
Yuba	122	158	-23%	↓

## Pended By County

Jul 2022 vs Jun 2022

Amador	59	46	28%	↑
Butte	20	21	-5%	↓
Colusa	15	5	200%	↑
El Dorado	213	206	3%	↑
Merced	122	107	14%	↑
Nevada	142	147	-3%	↓
Placer	443	492	-10%	↓
Sacramento	1244	1247	0%	
San Joaquin	480	439	9%	↑
Stanislaus	413	351	18%	↑
Sutter	77	61	26%	↑
Yolo	153	129	19%	↑
Yuba	86	95	-9%	↓

## Sold By County

Jul 2022 vs Jun 2022

Amador	45	61	-26%	↓
Butte	20	23	-13%	↓
Colusa	6	10	-40%	↓
El Dorado	191	239	-20%	↓
Merced	109	118	-8%	↓
Nevada	134	162	-17%	↓
Placer	431	570	-24%	↓
Sacramento	1157	1426	-19%	↓
San Joaquin	393	542	-27%	↓
Stanislaus	323	421	-23%	↓
Sutter	60	64	-6%	↓
Yolo	128	151	-15%	↓
Yuba	90	95	-5%	↓

Data provided by **MetroList**  
THE TRUE SOURCE

Powered by **TrendGraphix**  
YOUR HOME FOR REAL ESTATE DATA

\*Data represents Residential Property class only.

\*Pended represents the number of properties that went into contract during the course of a calendar month.

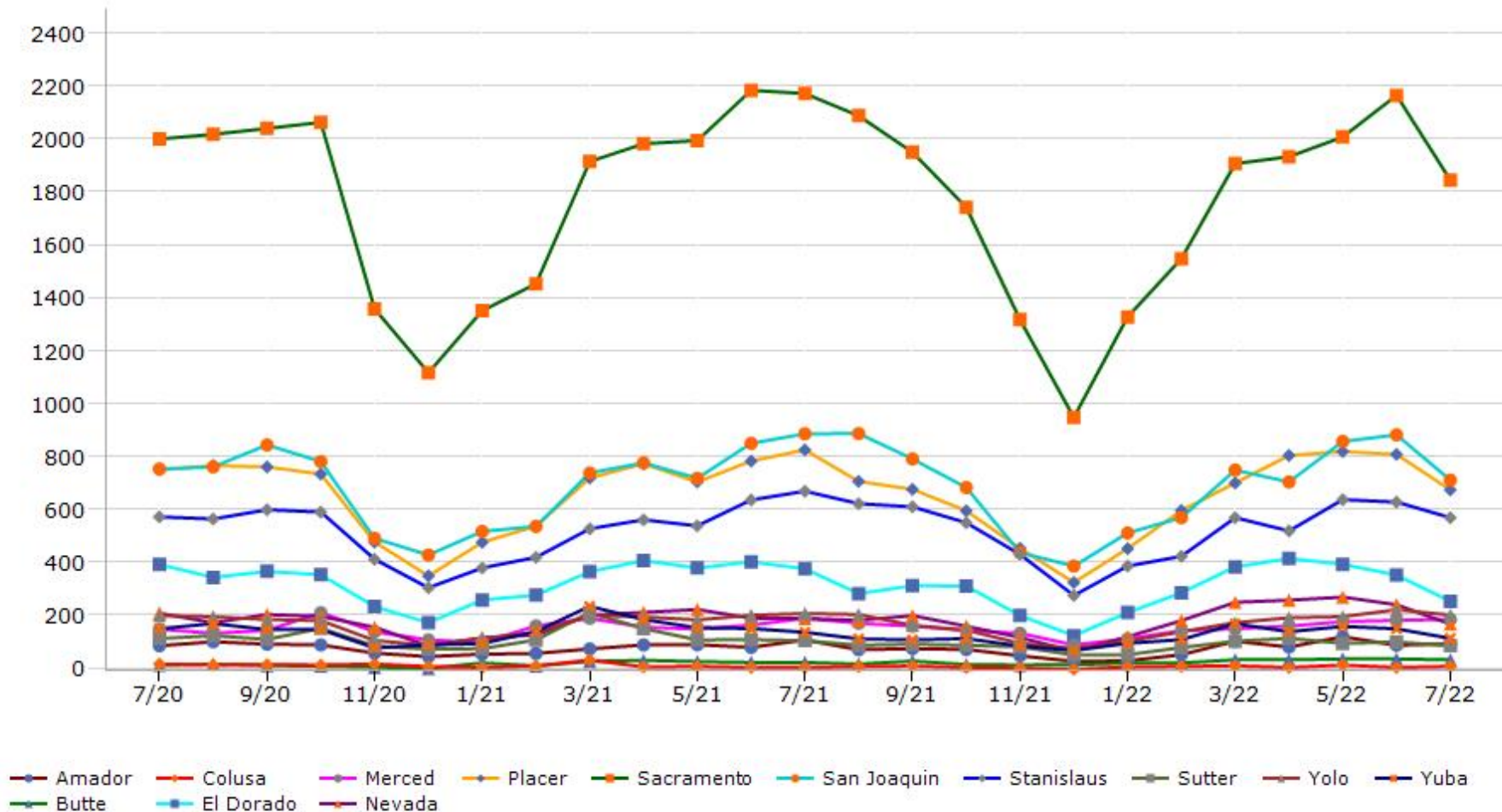
\*Month of Inventory is calculated by dividing the number of homes that went into contract in a given calendar month into the number of homes that were active at the end of a given calendar month.

# Trending Report: Jul 2020 - Jul 2022



CALIFORNIA REAL ESTATE BROKERS, INC.

## New Listing



Data provided by **MetroList**  
THE TRUE SOURCE

Powered by **TrendGraphix**  
YOUR HOME FOR REAL ESTATE DATA

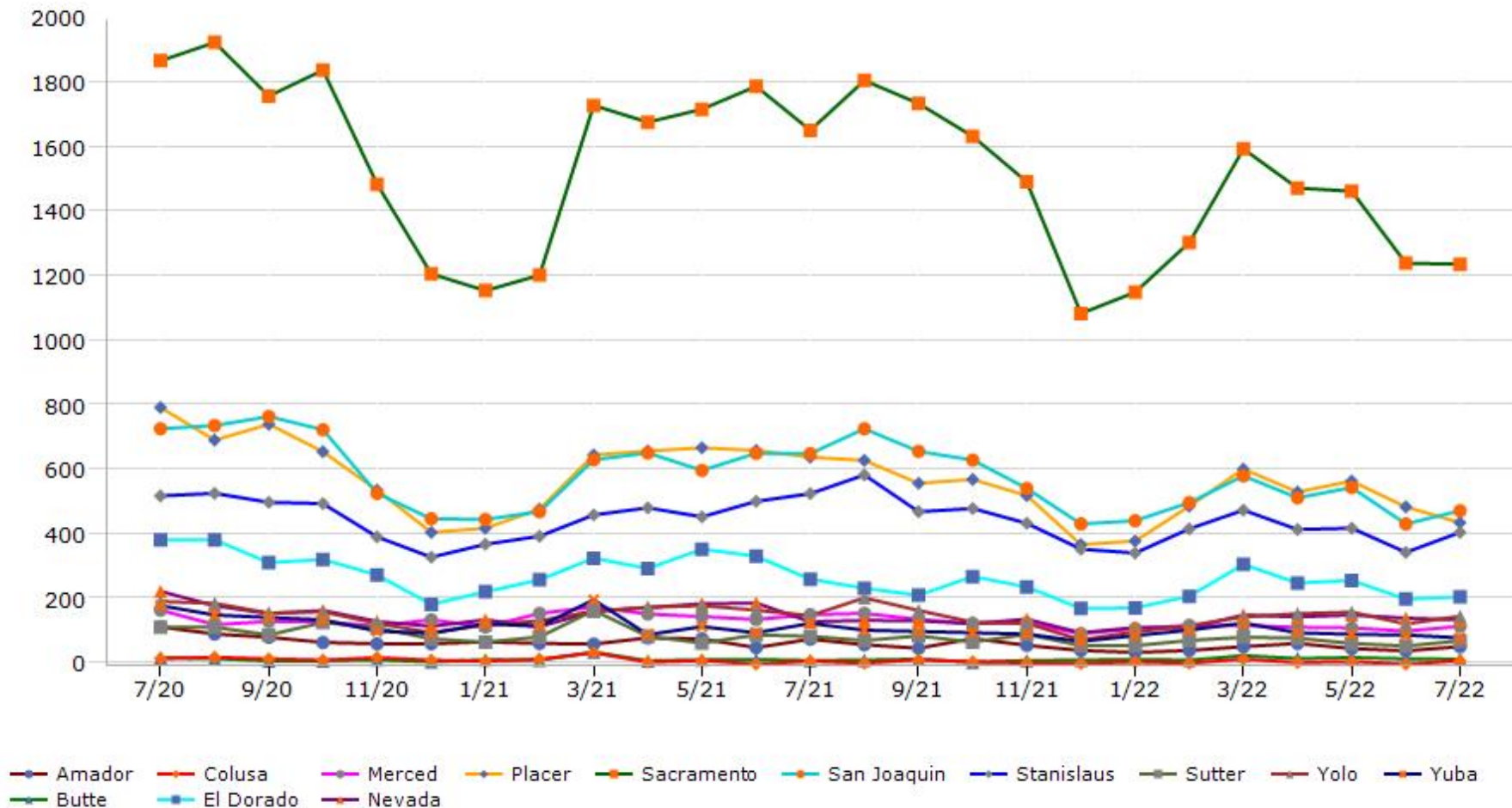
\*Data represents Residential Property class only.

# Trending Report: Jul 2020 - Jul 2022



CALIFORNIA REAL ESTATE BROKERS, INC.

## Pended



Data provided by **MetroList**<sup>®</sup>  
THE TRUE SOURCE

Powered by **TrendGraphix**  
YOUR HOME FOR REAL ESTATE DATA

\*Data represents Residential Property class only.

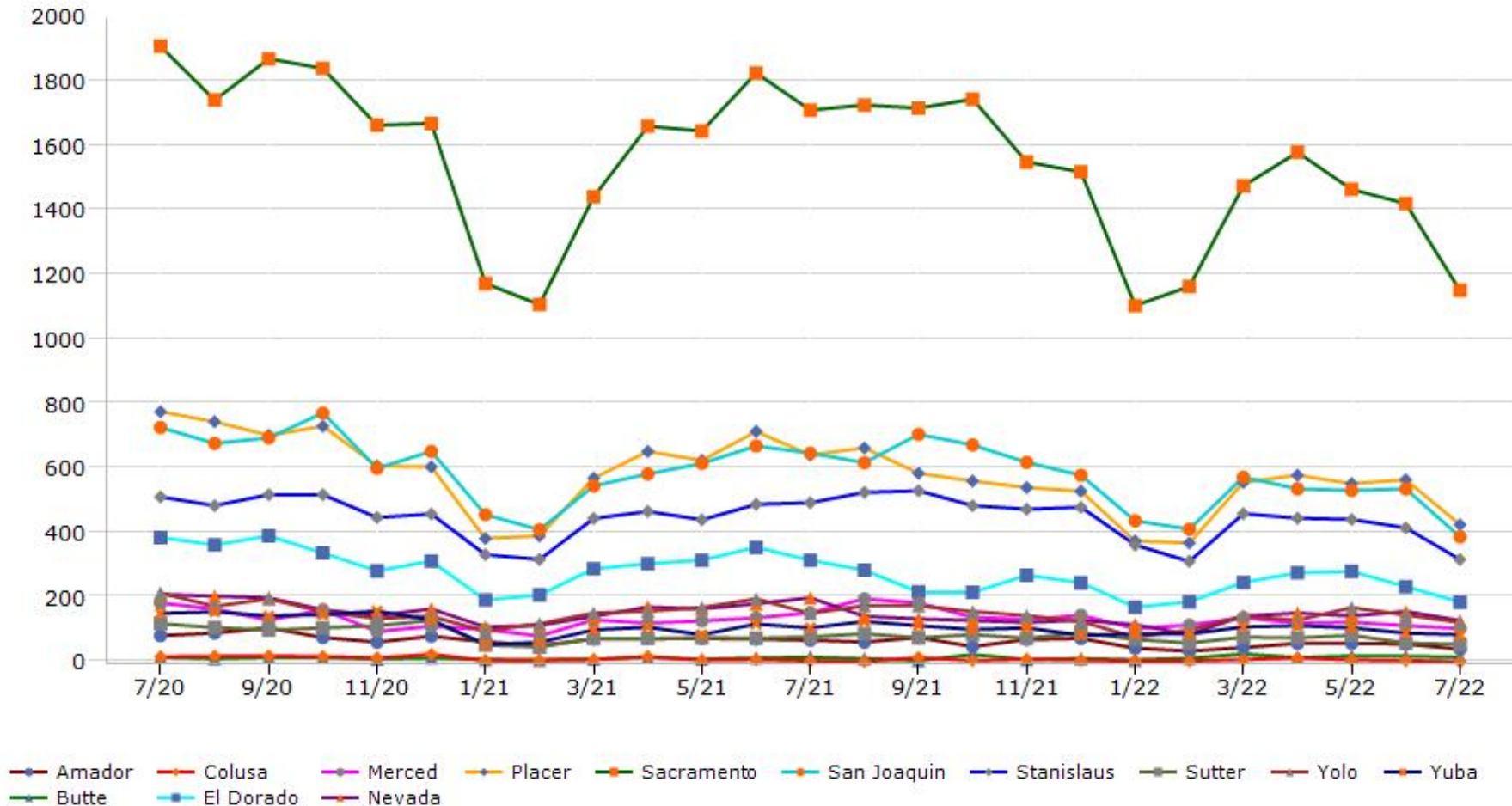
\*Pended represents the number of properties that went into contract during the course of a calendar month.

# Trending Report: Jul 2020 - Jul 2022



CALIFORNIA REAL ESTATE BROKERS, INC.

## Sold



Data provided by **MetroList**<sup>®</sup>  
THE TRUE SOURCE

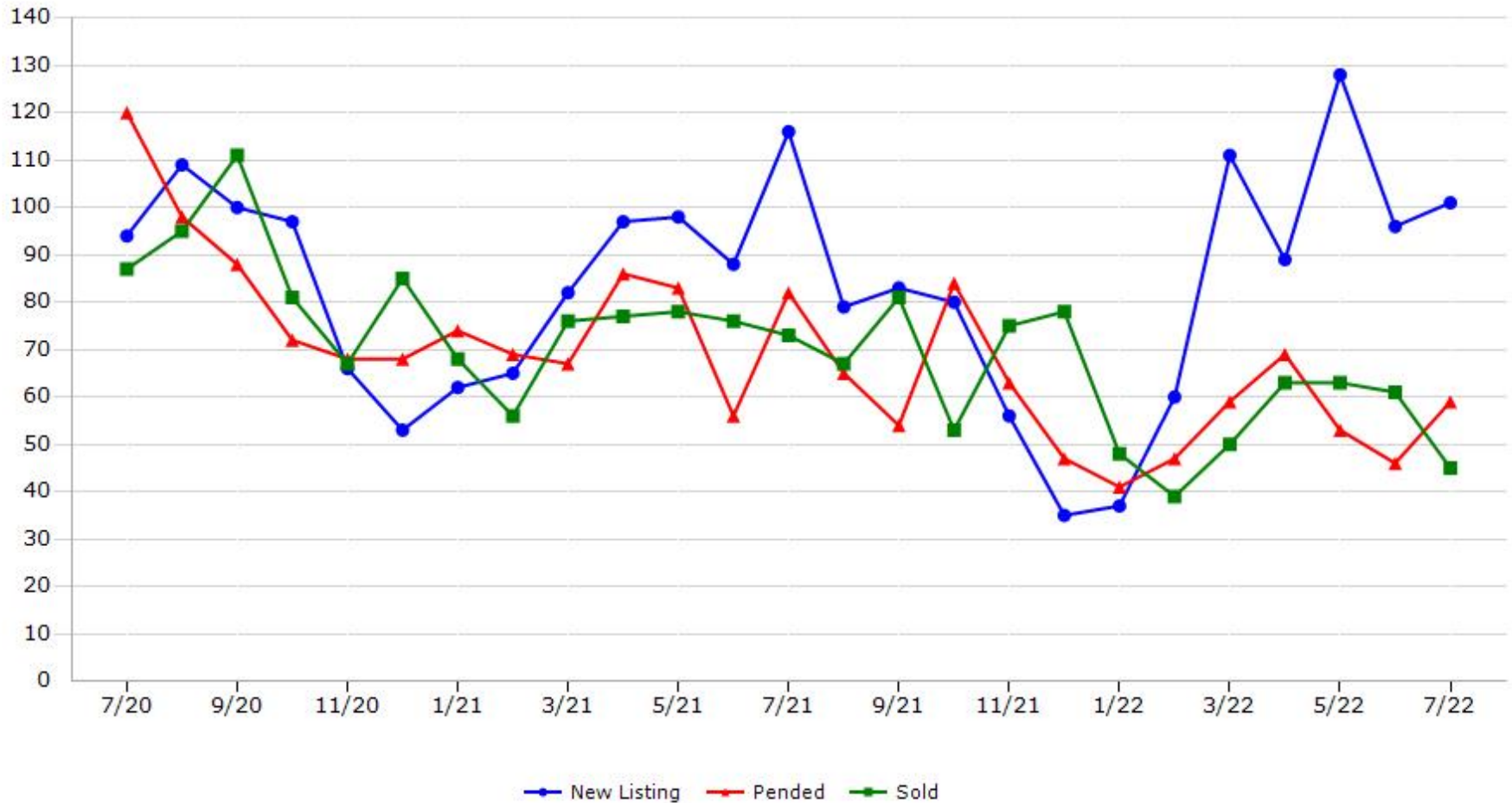
Powered by **TrendGraphix**  
YOUR HOME FOR REAL ESTATE DATA

\*Data represents Residential Property class only.

# Trending Report: Jul 2020 - Jul 2022



## Amador County



Data provided by **MetroList**® THE TRUE SOURCE Powered by **TrendGraphix** YOUR HOME FOR REAL ESTATE DATA

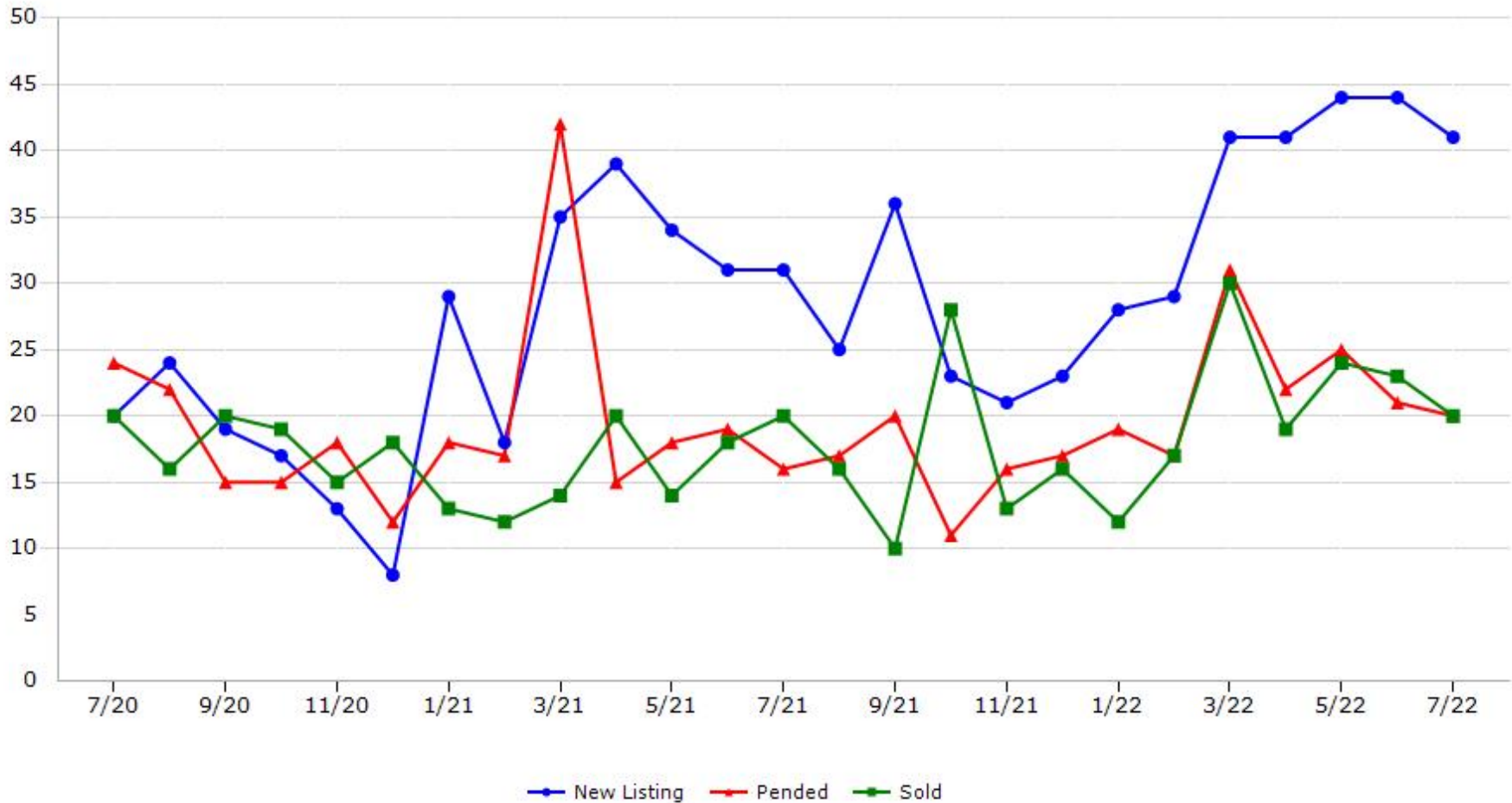
\*Data represents Residential Property class only.

\*Pended represents the number of properties that went into contract during the course of a calendar month.

# Trending Report: Jul 2020 - Jul 2022



## Butte County



Data provided by **MetroList**® THE TRUE SOURCE | Powered by **TrendGraphix** YOUR HOME FOR REAL ESTATE DATA

\*Data represents Residential Property class only.

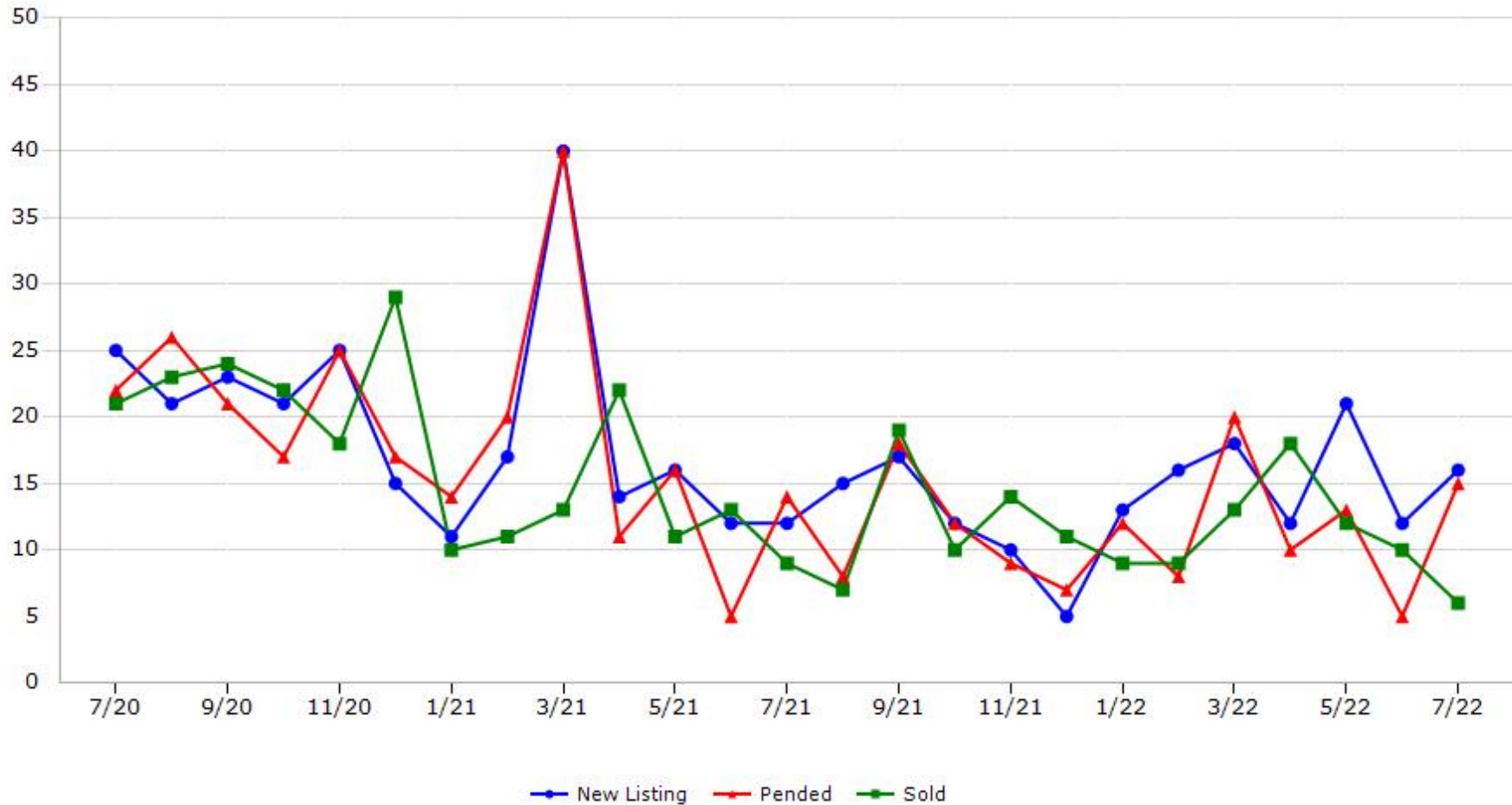
\*Pended represents the number of properties that went into contract during the course of a calendar month.

# Trending Report: Jul 2020 - Jul 2022



CALIFORNIA REAL ESTATE BROKERS, INC.

## Colusa County



Data provided by **MetroList**® THE TRUE SOURCE Powered by **TrendGraphix** YOUR HOME FOR REAL ESTATE DATA

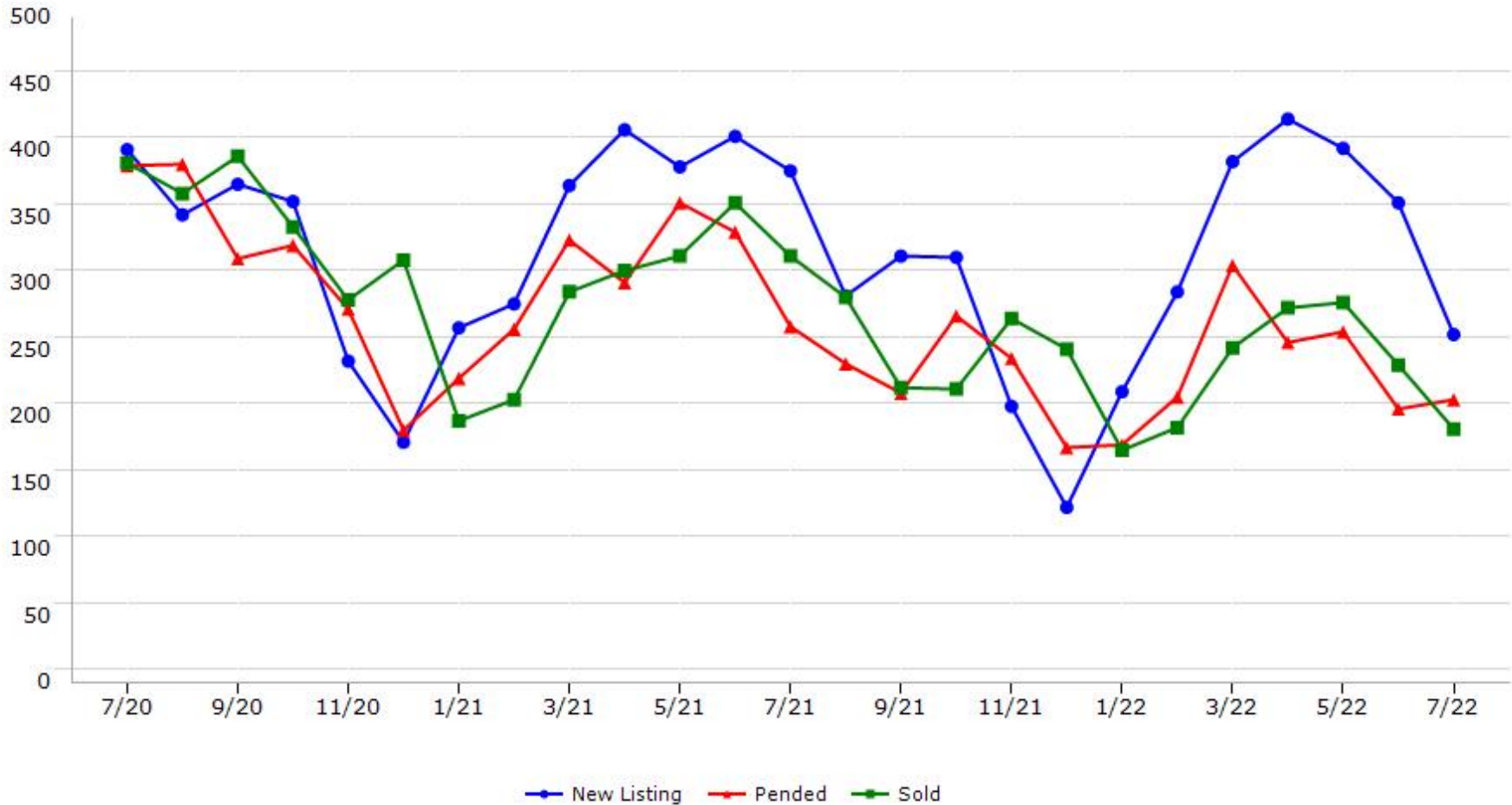
\*Data represents Residential Property class only.

\*Pended represents the number of properties that went into contract during the course of a calendar month.

# Trending Report: Jul 2020 - Jul 2022



## El Dorado County



Data provided by **MetroList**® THE TRUE SOURCE | Powered by **TrendGraphix** YOUR HOME FOR REAL ESTATE DATA

\*Data represents Residential Property class only.

\*Pended represents the number of properties that went into contract during the course of a calendar month.

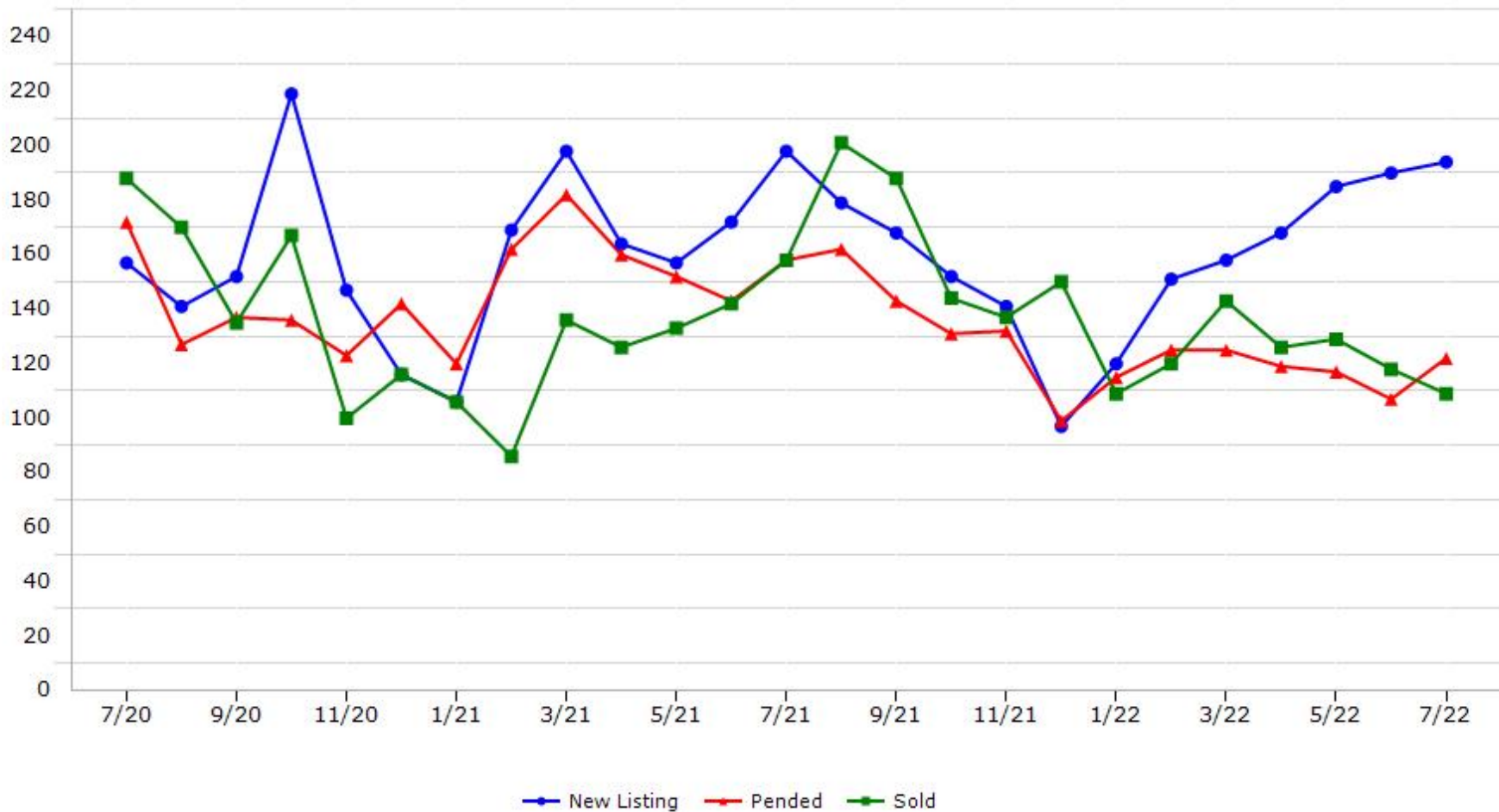


# Trending Report: Jul 2020 - Jul 2022



CALIFORNIA REAL ESTATE BROKERS, INC.

## Merced County



Data provided by **MetroList**® THE TRUE SOURCE | Powered by **TrendGraphix** YOUR HOME FOR REAL ESTATE DATA

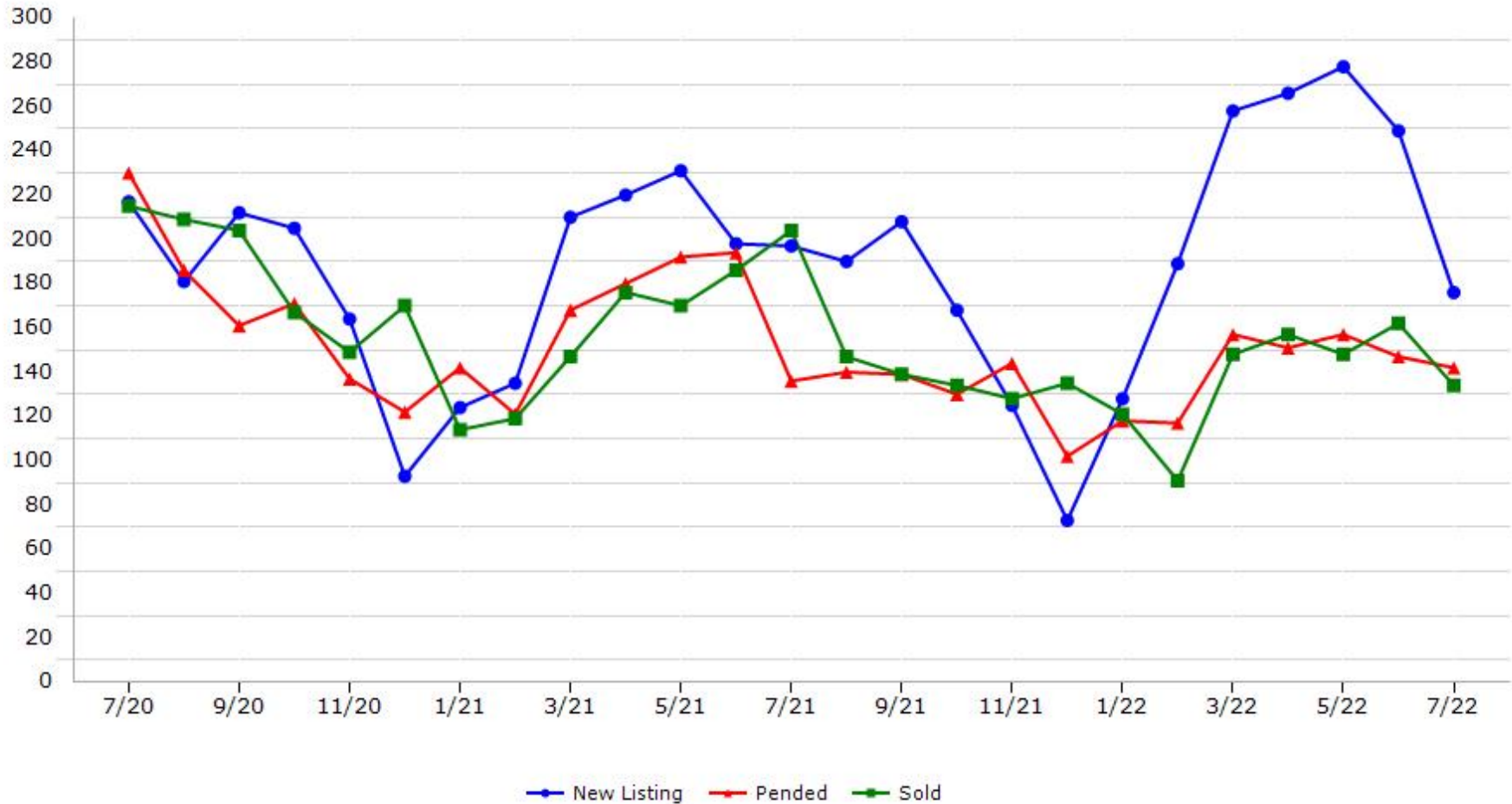
\*Data represents Residential Property class only.

\*Pended represents the number of properties that went into contract during the course of a calendar month.

# Trending Report: Jul 2020 - Jul 2022



## Nevada County



Data provided by **MetroList**® THE TRUE SOURCE Powered by **TrendGraphix** YOUR HOME FOR REAL ESTATE DATA

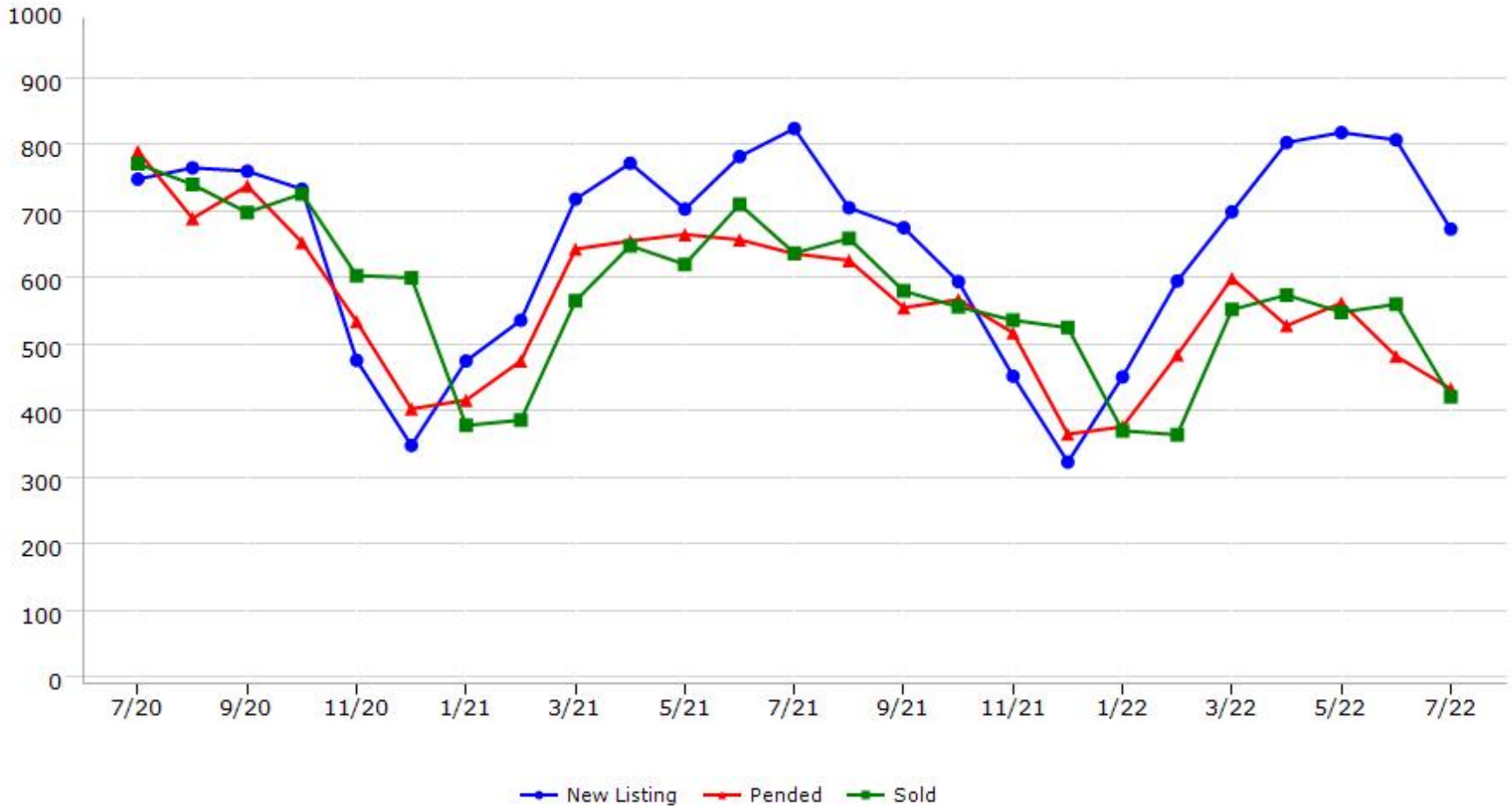
\*Data represents Residential Property class only.

\*Pended represents the number of properties that went into contract during the course of a calendar month.

# Trending Report: Jul 2020 - Jul 2022



## Placer County



Data provided by **MetroList**® THE TRUE SOURCE Powered by **TrendGraphix** YOUR HOME FOR REAL ESTATE DATA

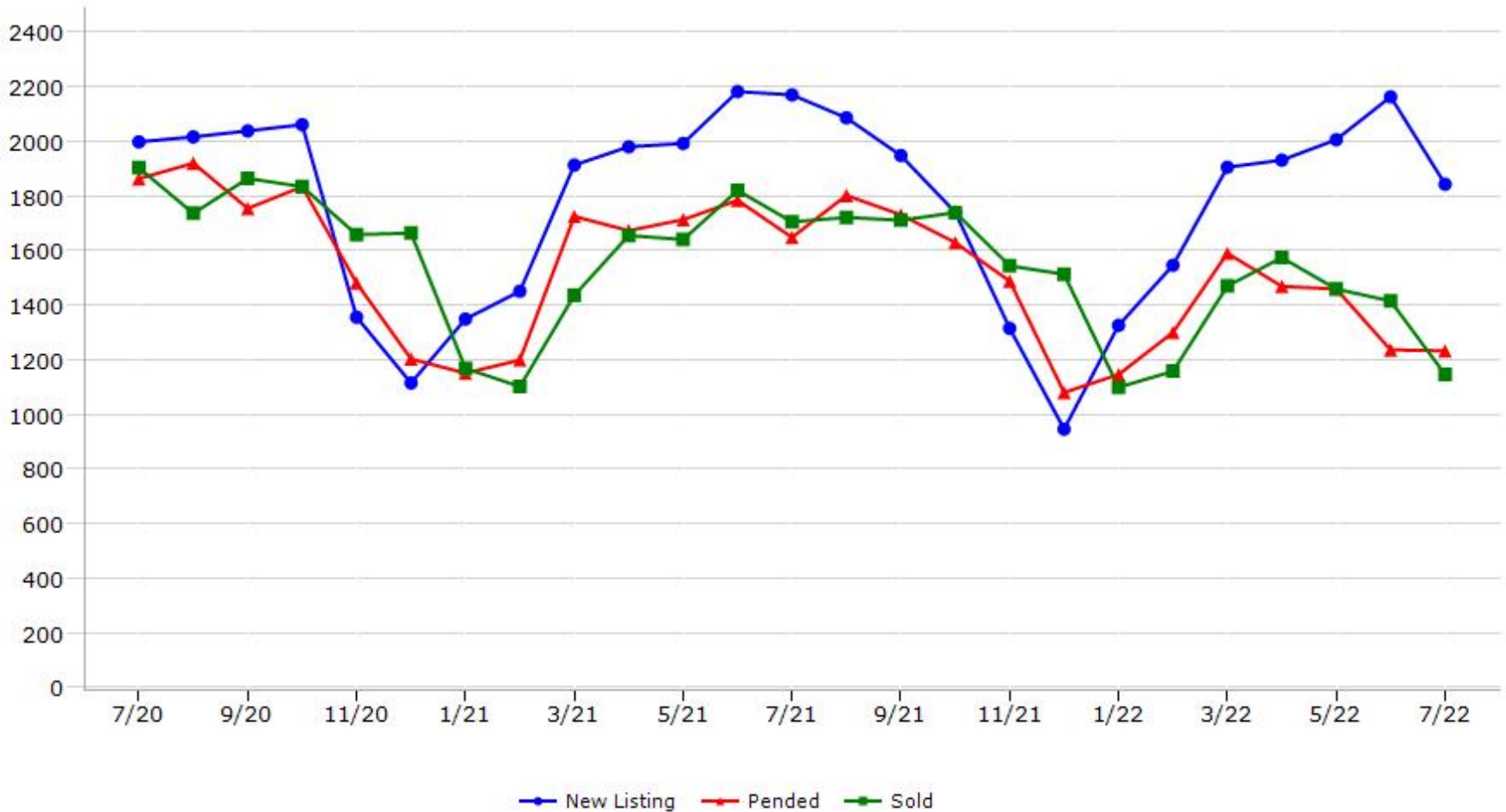
\*Data represents Residential Property class only.

\*Pended represents the number of properties that went into contract during the course of a calendar month.

# Trending Report: Jul 2020 - Jul 2022



## Sacramento County



Data provided by **MetroList**® THE TRUE SOURCE | Powered by **TrendGraphix** YOUR HOME FOR REAL ESTATE DATA

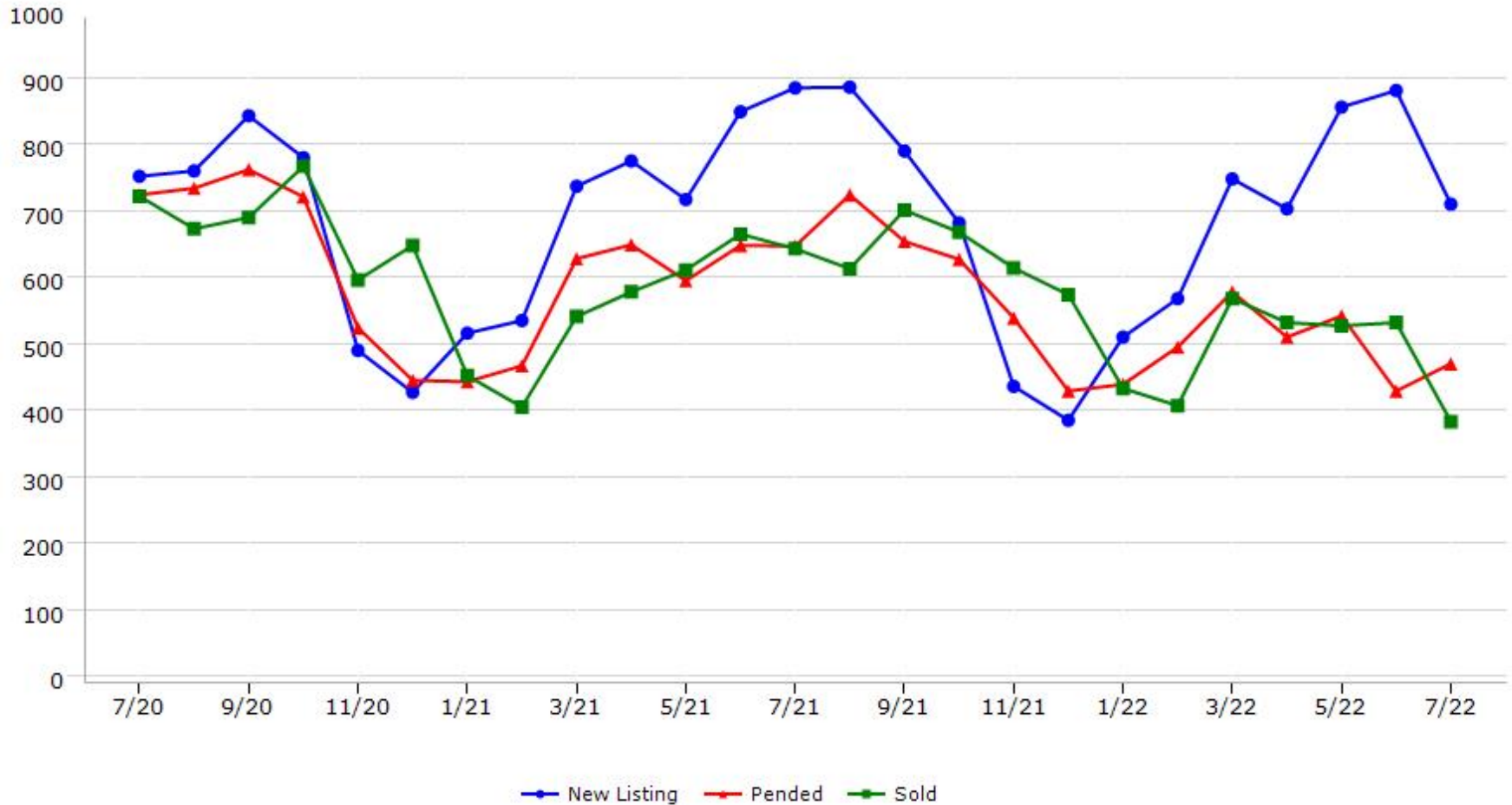
\*Data represents Residential Property class only.

\*Pended represents the number of properties that went into contract during the course of a calendar month.

# Trending Report: Jul 2020 - Jul 2022



## San Joaquin County



Data provided by **MetroList**® THE TRUE SOURCE Powered by **TrendGraphix** YOUR HOME FOR REAL ESTATE DATA

\*Data represents Residential Property class only.

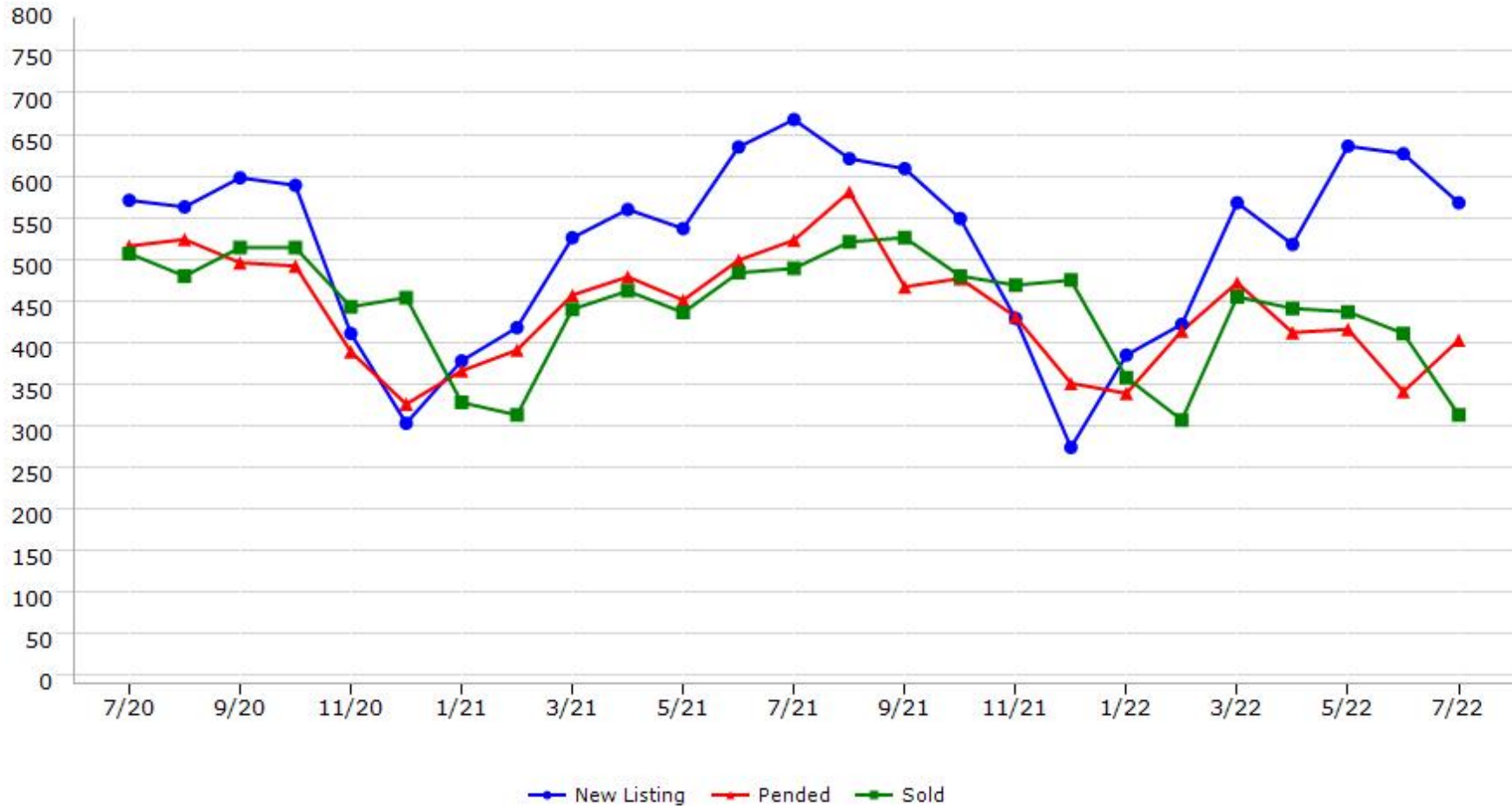
\*Pended represents the number of properties that went into contract during the course of a calendar month.

# Trending Report: Jul 2020 - Jul 2022



CALIFORNIA REAL ESTATE BROKERS, INC.

## Stanislaus County



Data provided by **MetroList**® THE TRUE SOURCE Powered by **TrendGraphix** YOUR HOME FOR REAL ESTATE DATA

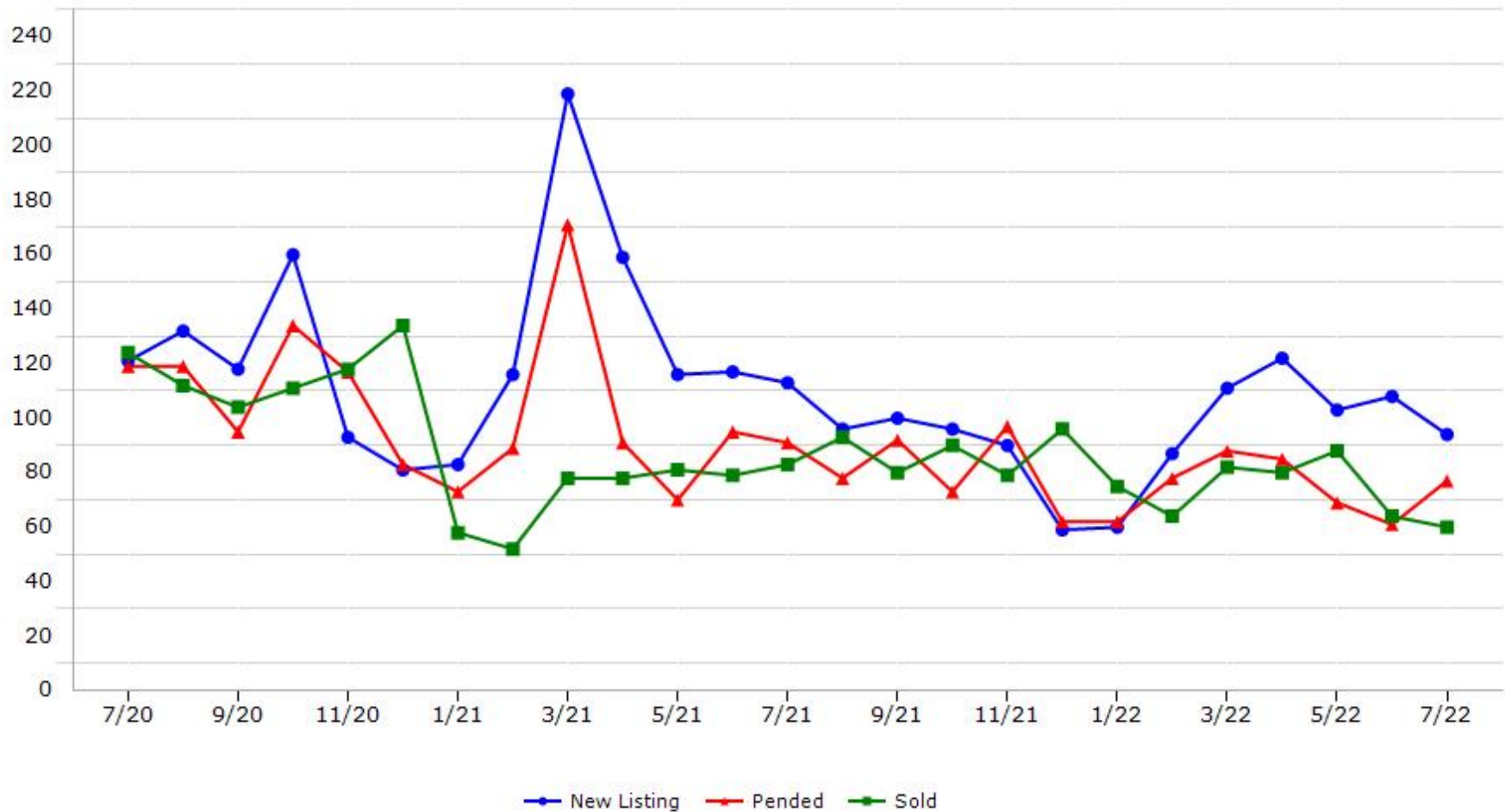
\*Data represents Residential Property class only.

\*Pended represents the number of properties that went into contract during the course of a calendar month.

# Trending Report: Jul 2020 - Jul 2022



## Sutter County



Data provided by **MetroList** THE TRUE SOURCE Powered by **TrendGraphix** YOUR HOME FOR REAL ESTATE DATA

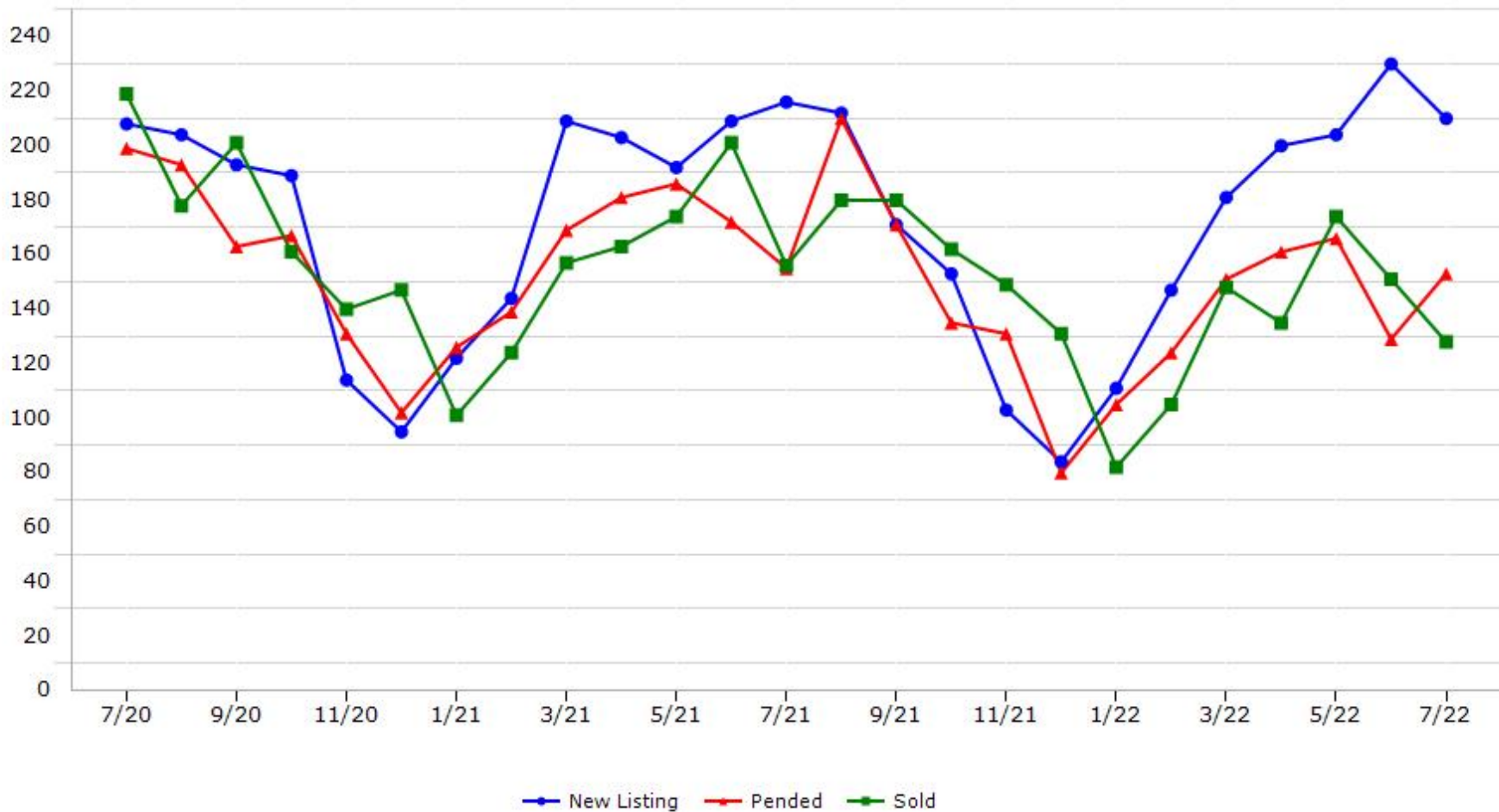
\*Data represents Residential Property class only.

\*Pended represents the number of properties that went into contract during the course of a calendar month.

# Trending Report: Jul 2020 - Jul 2022



## Yolo County



Data provided by **MetroList** THE TRUE SOURCE Powered by **TrendGraphix** YOUR HOME FOR REAL ESTATE DATA

\*Data represents Residential Property class only.

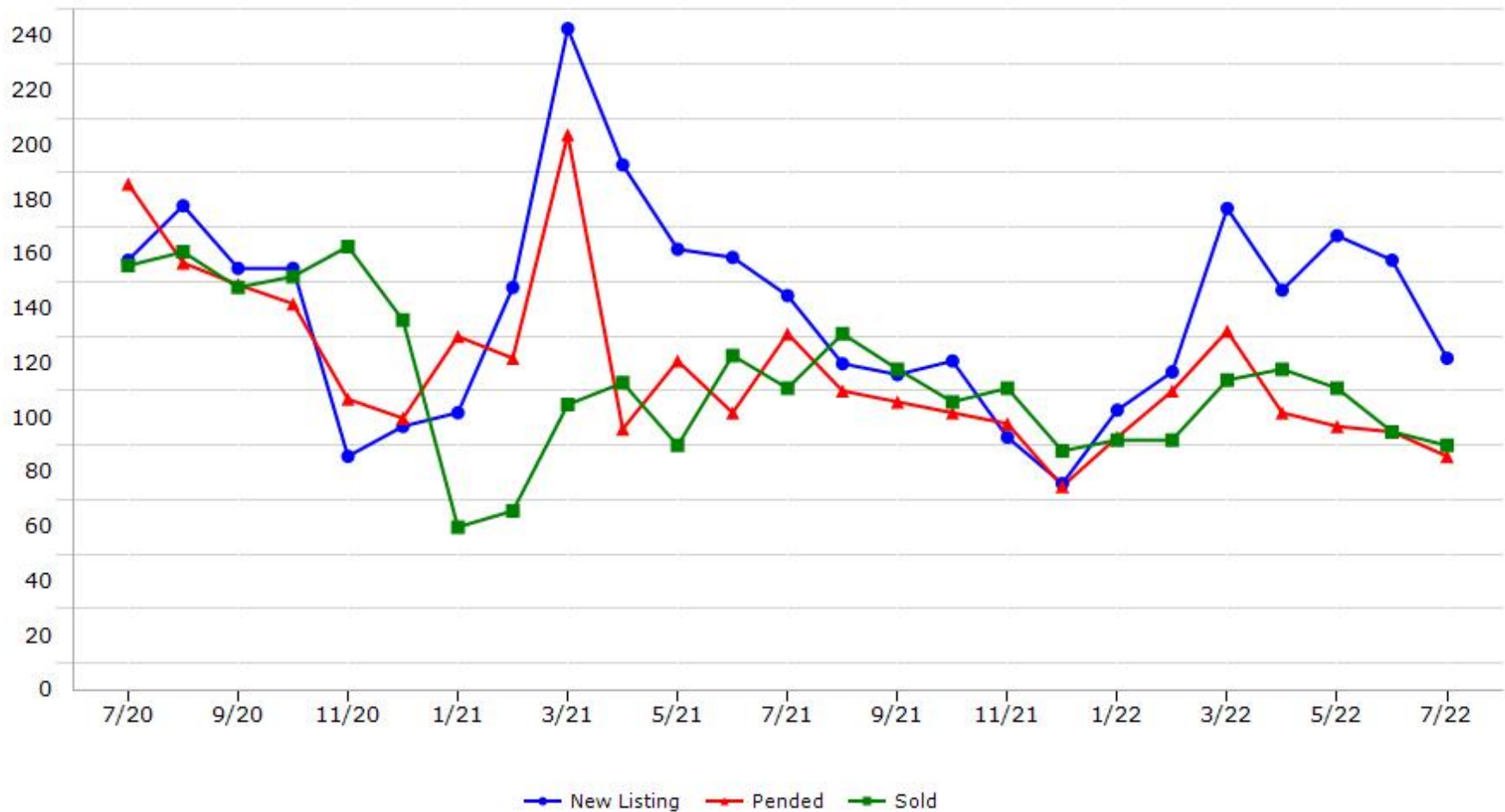
\*Pended represents the number of properties that went into contract during the course of a calendar month.



# Trending Report: Jul 2020 - Jul 2022



## Yuba County



Data provided by **MetroList**® THE TRUE SOURCE Powered by **TrendGraphix** YOUR HOME FOR REAL ESTATE DATA

\*Data represents Residential Property class only.

\*Pended represents the number of properties that went into contract during the course of a calendar month.