

# Monthly Market Report - June 2022



CALIFORNIA REAL ESTATE BROKERS, INC.

## MetroList All Areas

Jun 2022 vs May 2022

### New Listing

5979    6260    -4% ↓

### Pended

3783    4246    -11% ↓

### Sold

3924    4271    -8% ↓

### Avg DOM

16    15    7% ↑

### Month of Inventory

2    1.4    43% ↑

## New Listing By County

Jun 2022 vs May 2022

Amador	92	128	-28%	↓
Butte	44	44	0%	
Colusa	11	20	-45%	↓
El Dorado	330	395	-16%	↓
Merced	187	183	2%	↑
Nevada	232	276	-16%	↓
Placer	754	812	-7%	↓
Sacramento	2029	1979	3%	↑
San Joaquin	828	848	-2%	↓
Stanislaus	615	641	-4%	↓
Sutter	103	102	1%	↑
Yolo	205	183	12%	↑
Yuba	139	157	-11%	↓

## Pended By County

Jun 2022 vs May 2022

Amador	53	56	-5%	↓
Butte	22	27	-19%	↓
Colusa	6	12	-50%	↓
El Dorado	219	266	-18%	↓
Merced	115	115	0%	
Nevada	159	157	1%	↑
Placer	512	572	-10%	↓
Sacramento	1307	1471	-11%	↓
San Joaquin	471	545	-14%	↓
Stanislaus	382	427	-11%	↓
Sutter	64	71	-10%	↓
Yolo	126	158	-20%	↓
Yuba	97	93	4%	↑

## Sold By County

Jun 2022 vs May 2022

Amador	58	63	-8%	↓
Butte	24	25	-4%	↓
Colusa	10	12	-17%	↓
El Dorado	233	282	-17%	↓
Merced	115	129	-11%	↓
Nevada	155	148	5%	↑
Placer	534	549	-3%	↓
Sacramento	1334	1453	-8%	↓
San Joaquin	501	521	-4%	↓
Stanislaus	402	444	-9%	↓
Sutter	59	88	-33%	↓
Yolo	142	166	-14%	↓
Yuba	92	108	-15%	↓

Data provided by **MetroList**  
THE TRUE SOURCE

Powered by **TrendGraphix**  
YOUR HOME FOR REAL ESTATE DATA

\*Data represents Residential Property class only.

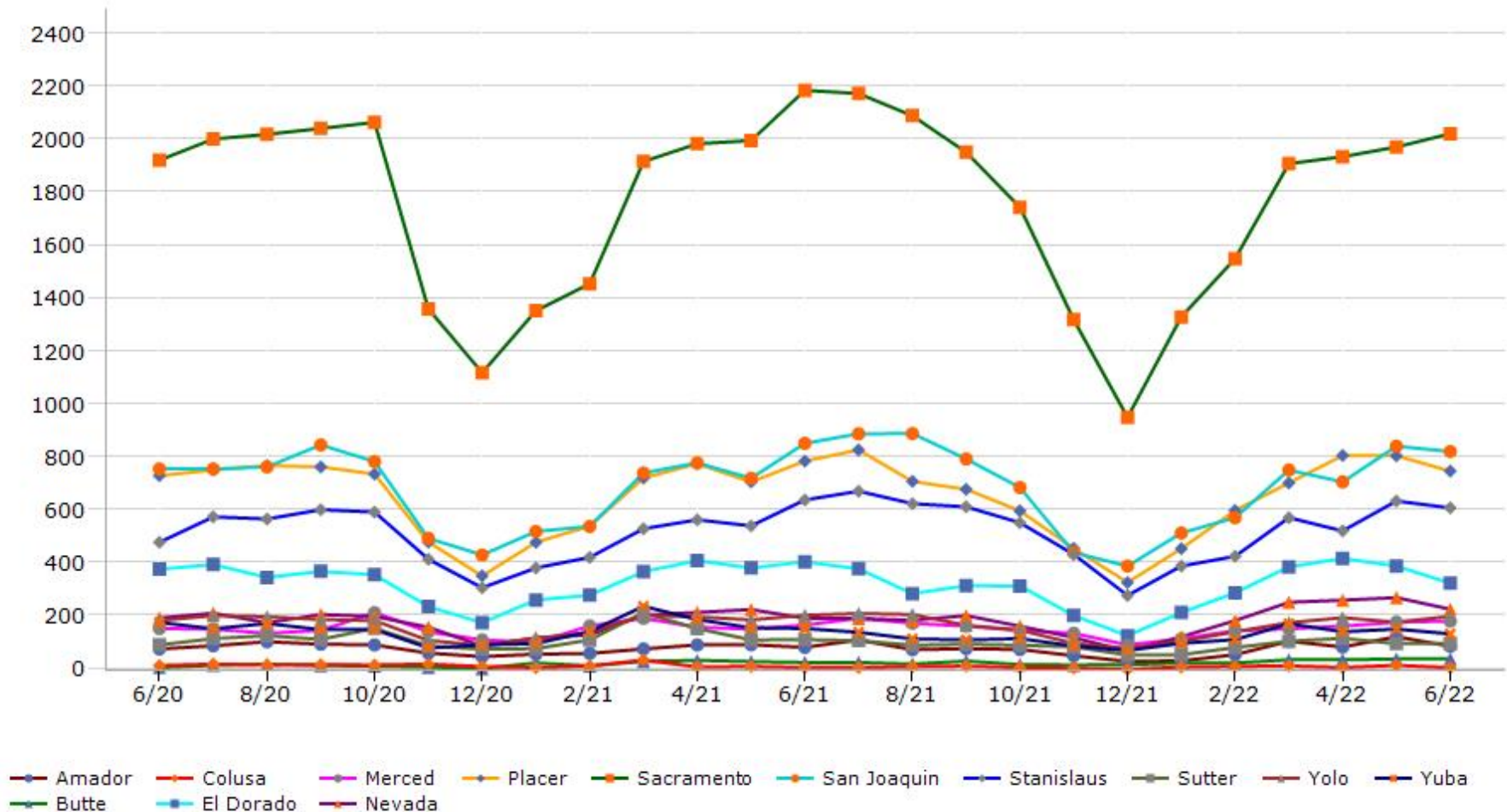
\*Pended represents the number of properties that went into contract during the course of a calendar month.

\*Month of Inventory is calculated by dividing the number of homes that went into contract in a given calendar month into the number of homes that were active at the end of a given calendar month.

# Trending Report: Jun 2020 - Jun 2022



## New Listing



Data provided by **MetroList**<sup>®</sup>  
THE TRUE SOURCE

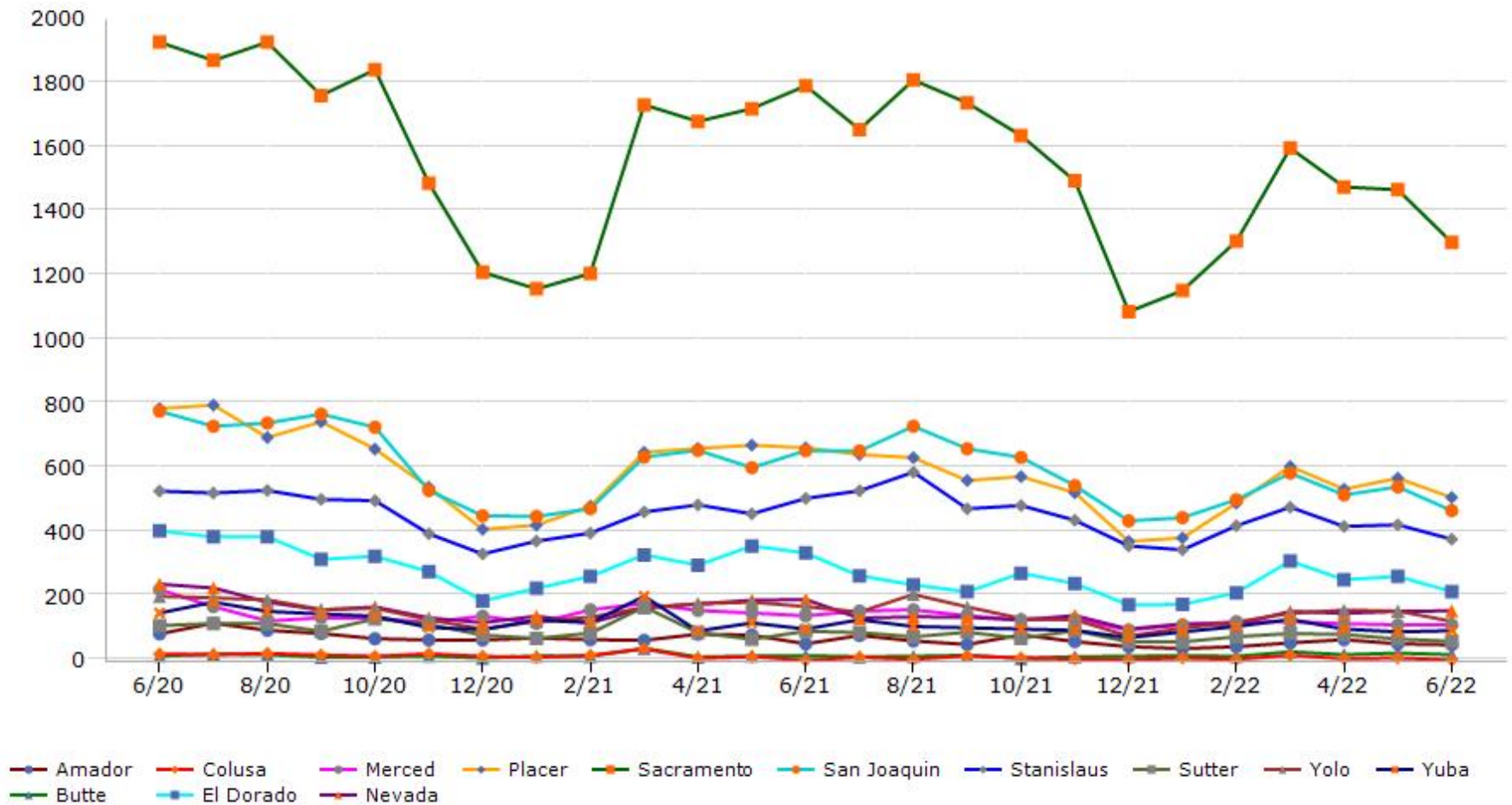
Powered by **TrendGraphix**  
YOUR HOME FOR REAL ESTATE DATA

\*Data represents Residential Property class only.

# Trending Report: Jun 2020 - Jun 2022



## Pended



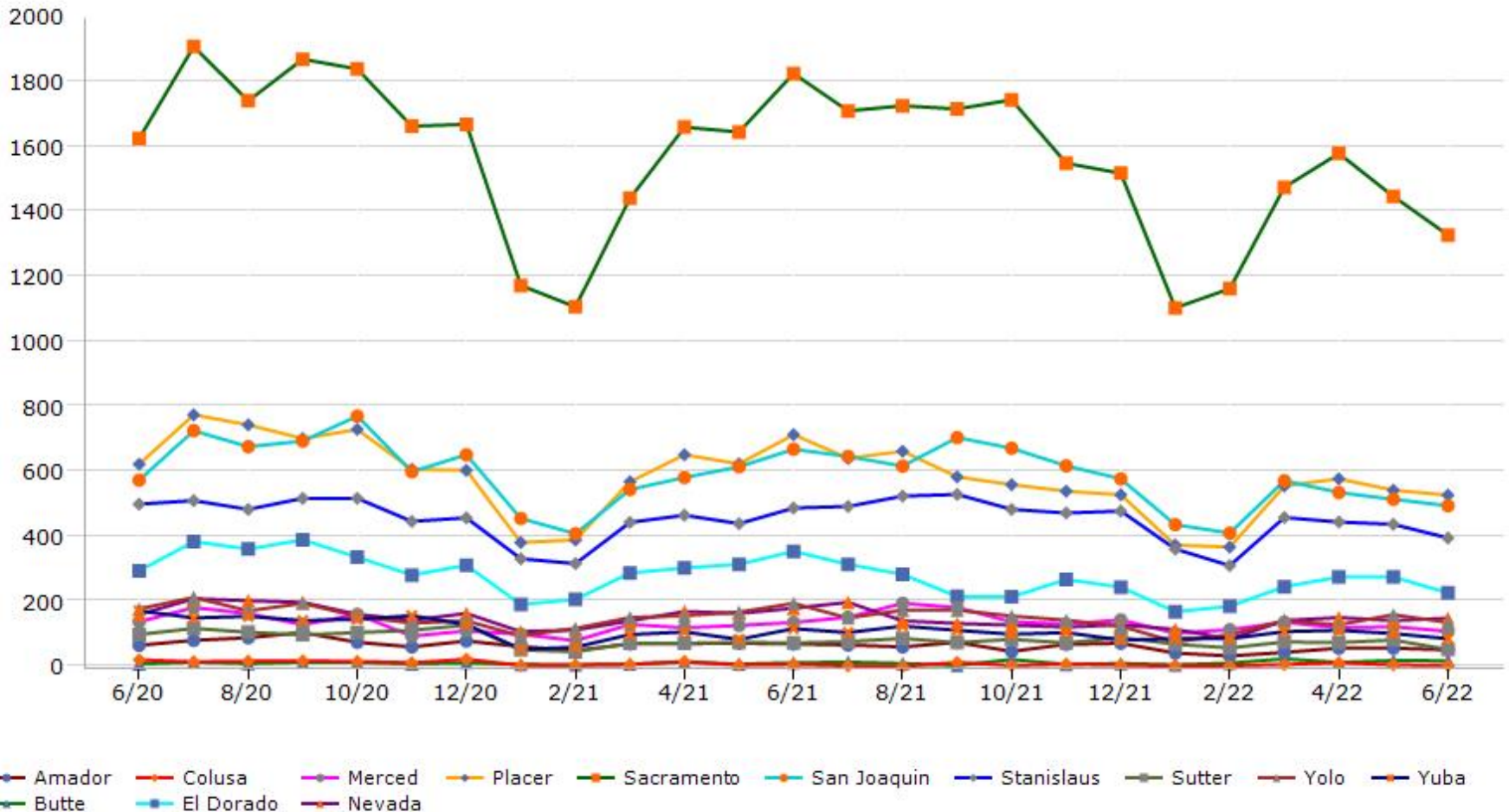
Data provided by **MetroList**® THE TRUE SOURCE | Powered by **TrendGraphix** YOUR HOME FOR REAL ESTATE DATA

\*Data represents Residential Property class only.  
 \*Pended represents the number of properties that went into contract during the course of a calendar month.

# Trending Report: Jun 2020 - Jun 2022



## Sold



Data provided by **MetroList**  
THE TRUE SOURCE

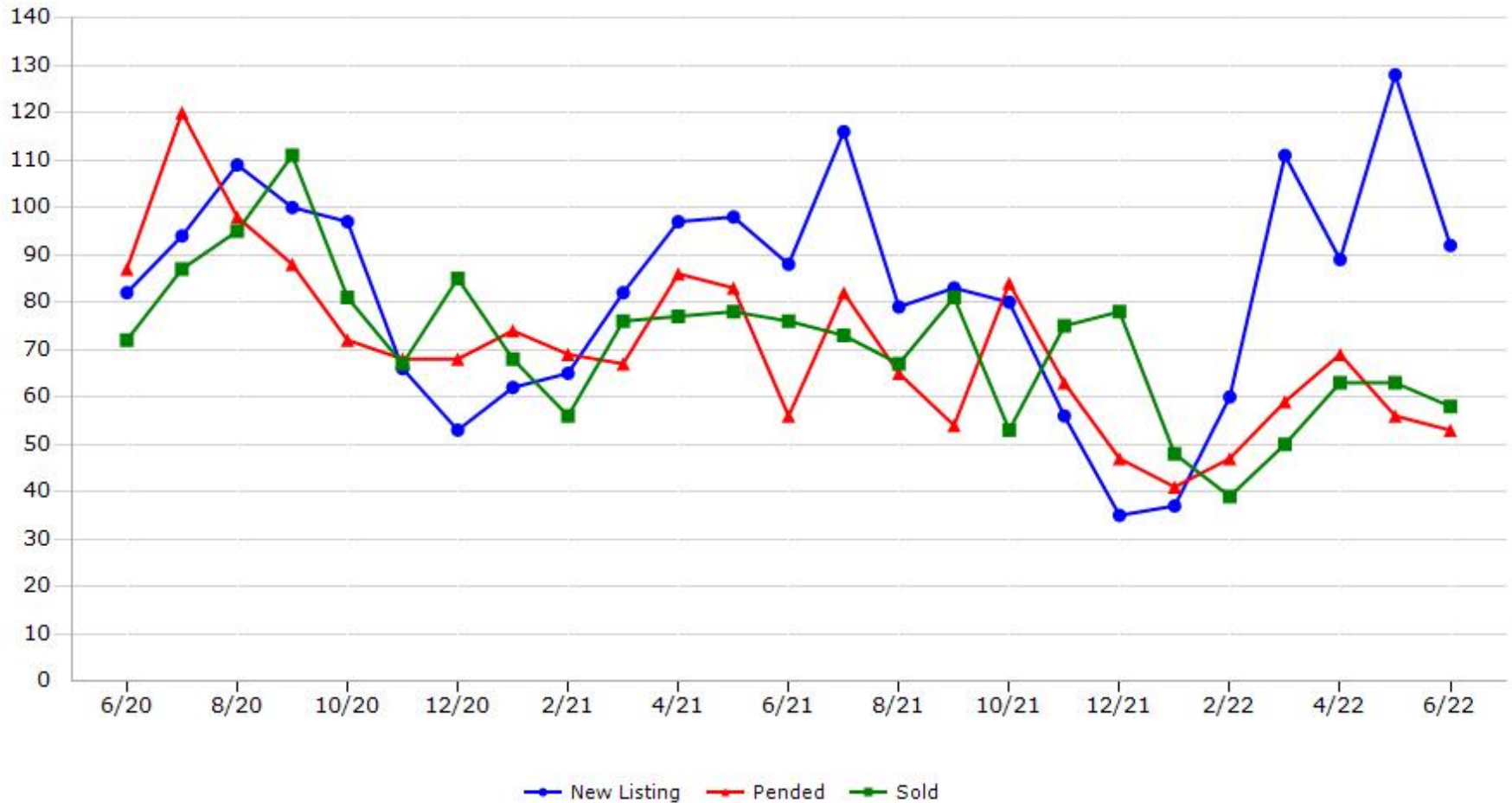
Powered by **TrendGraphix**  
YOUR HOME FOR REAL ESTATE DATA

\*Data represents Residential Property class only.

# Trending Report: Jun 2020 - Jun 2022



## Amador County



Data provided by **MetroList**® THE TRUE SOURCE    Powered by **TrendGraphix** YOUR HOME FOR REAL ESTATE DATA

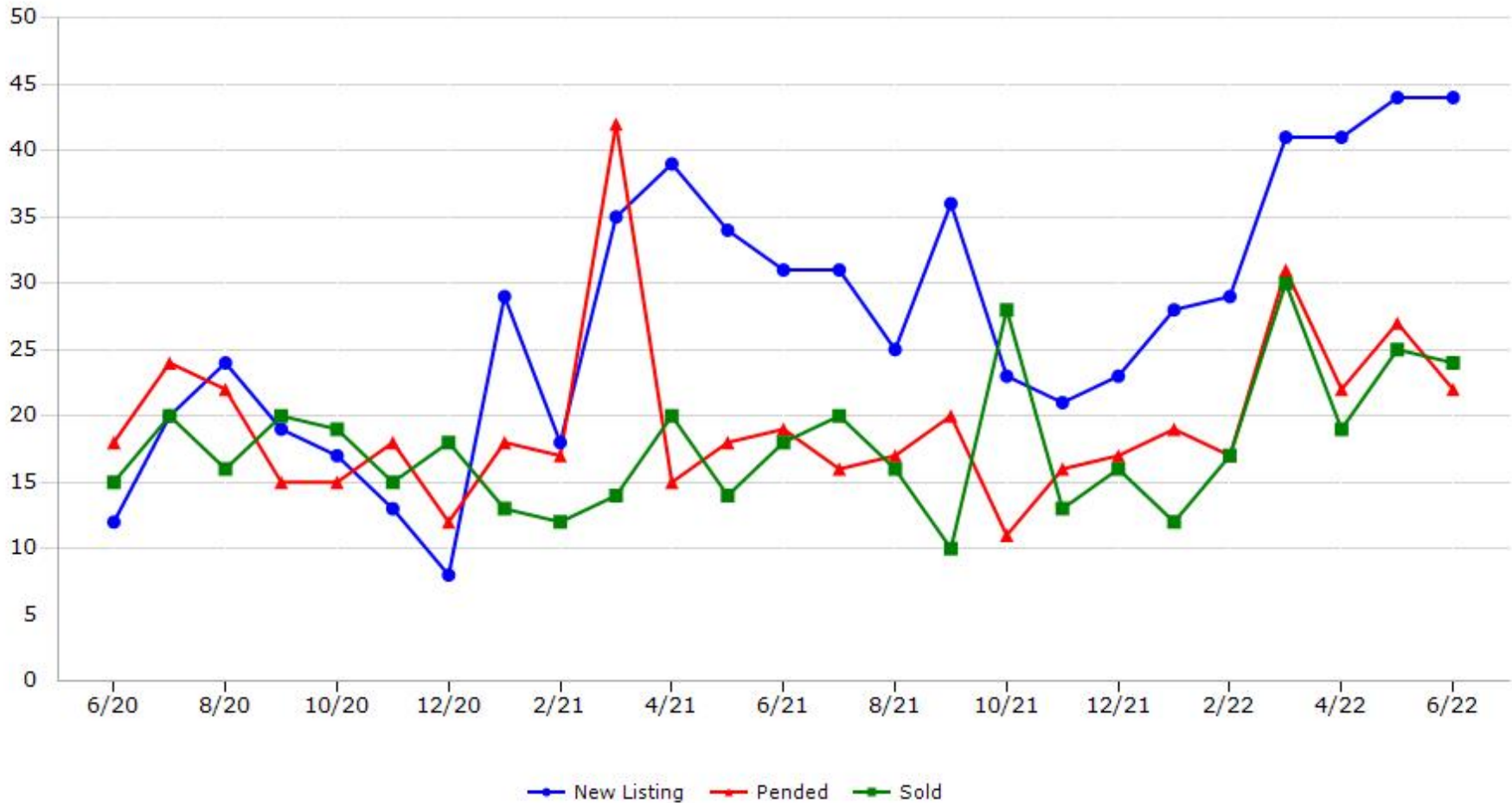
\*Data represents Residential Property class only.

\*Pended represents the number of properties that went into contract during the course of a calendar month.

# Trending Report: Jun 2020 - Jun 2022



## Butte County



Data provided by **MetroList**<sup>®</sup> THE TRUE SOURCE | Powered by **TrendGraphix** YOUR HOME FOR REAL ESTATE DATA

\*Data represents Residential Property class only.

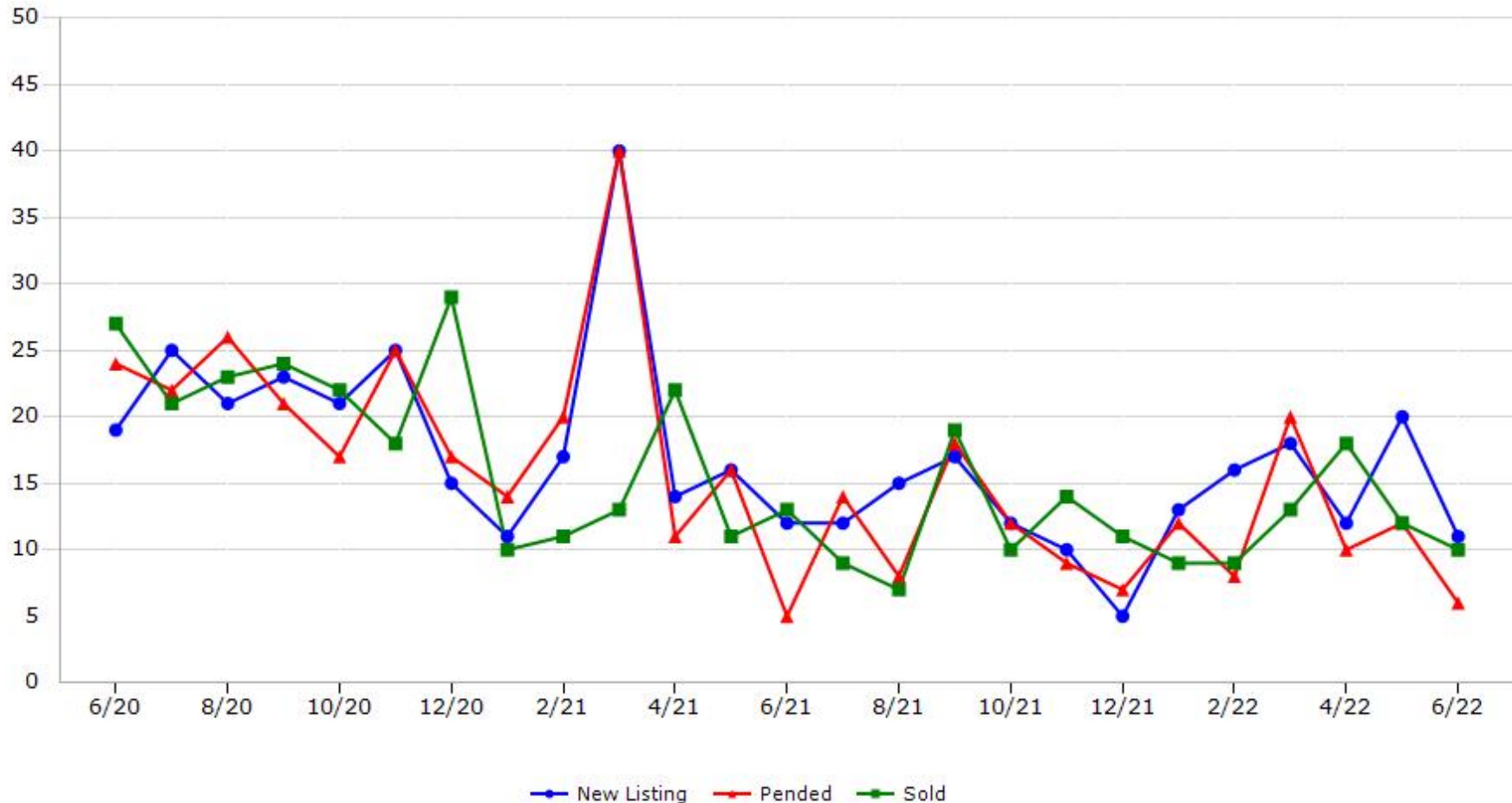
\*Pended represents the number of properties that went into contract during the course of a calendar month.

# Trending Report: Jun 2020 - Jun 2022



CALIFORNIA REAL ESTATE BROKERS, INC.

## Colusa County



Data provided by **MetroList**® THE TRUE SOURCE Powered by **TrendGraphix** YOUR HOME FOR REAL ESTATE DATA

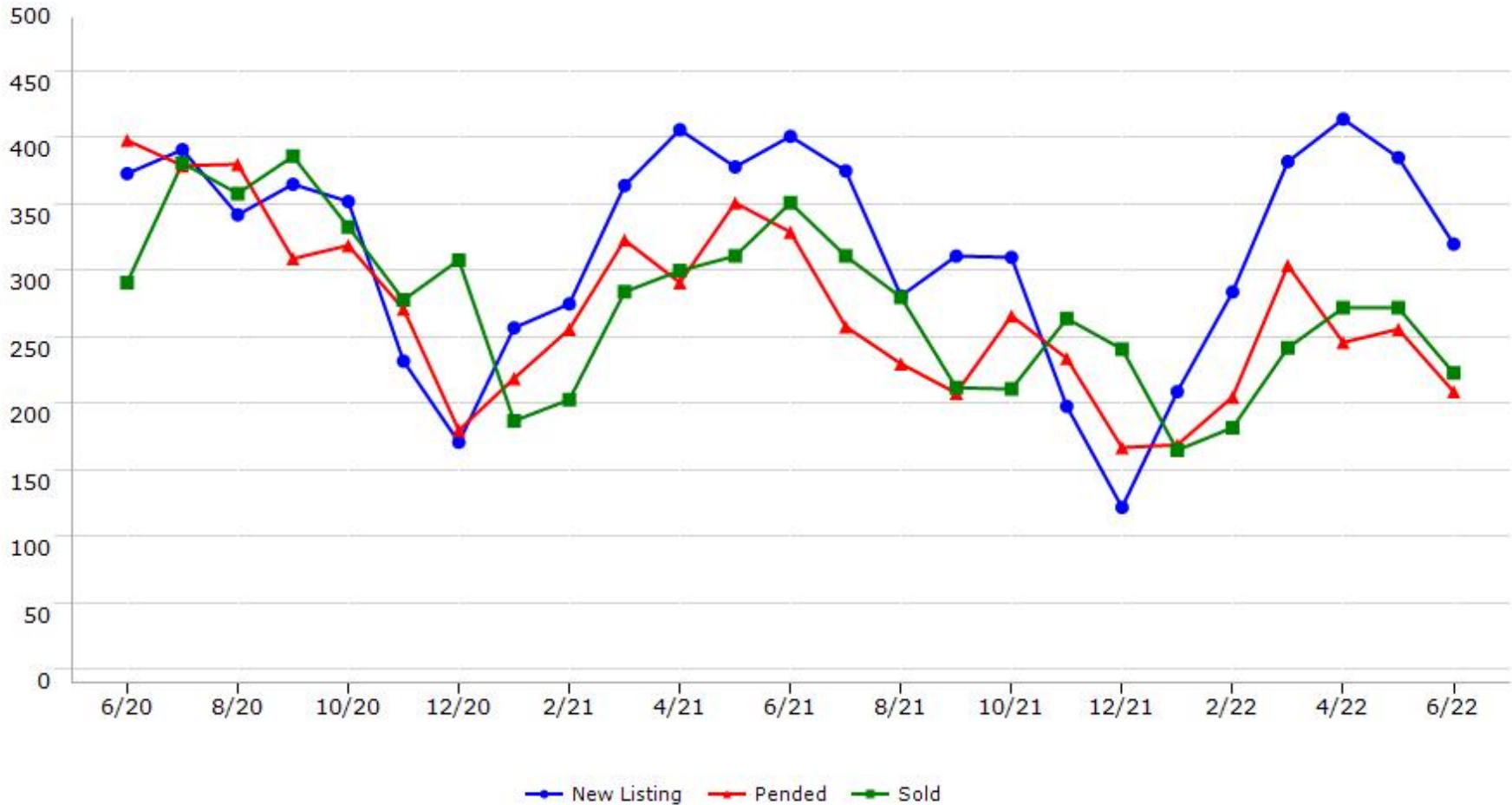
\*Data represents Residential Property class only.

\*Pended represents the number of properties that went into contract during the course of a calendar month.

# Trending Report: Jun 2020 - Jun 2022



## El Dorado County



Data provided by **MetroList**® THE TRUE SOURCE Powered by **TrendGraphix** YOUR HOME FOR REAL ESTATE DATA

\*Data represents Residential Property class only.

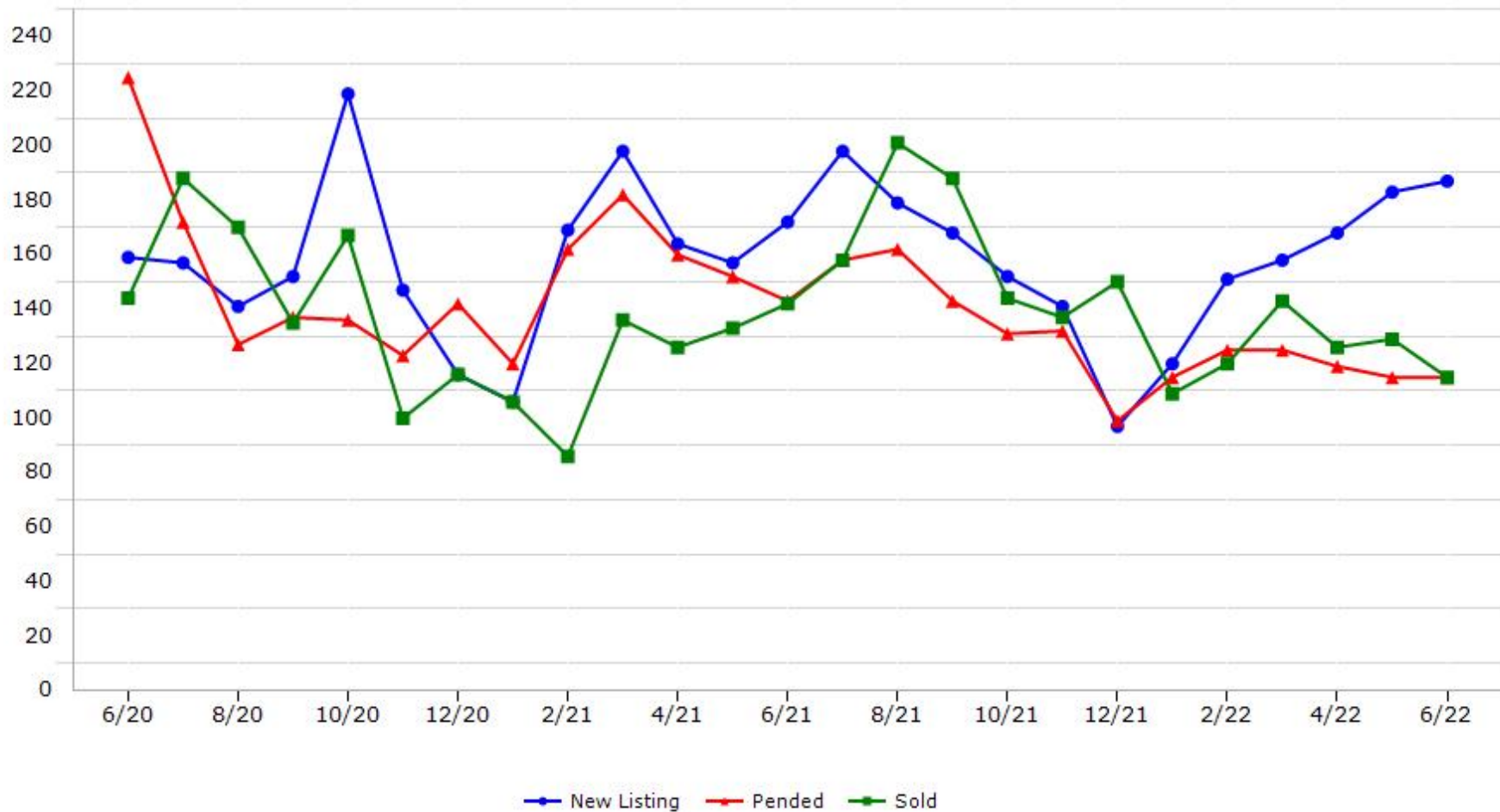
\*Pended represents the number of properties that went into contract during the course of a calendar month.



# Trending Report: Jun 2020 - Jun 2022



## Merced County



Data provided by **MetroList**® THE TRUE SOURCE Powered by **TrendGraphix** YOUR HOME FOR REAL ESTATE DATA

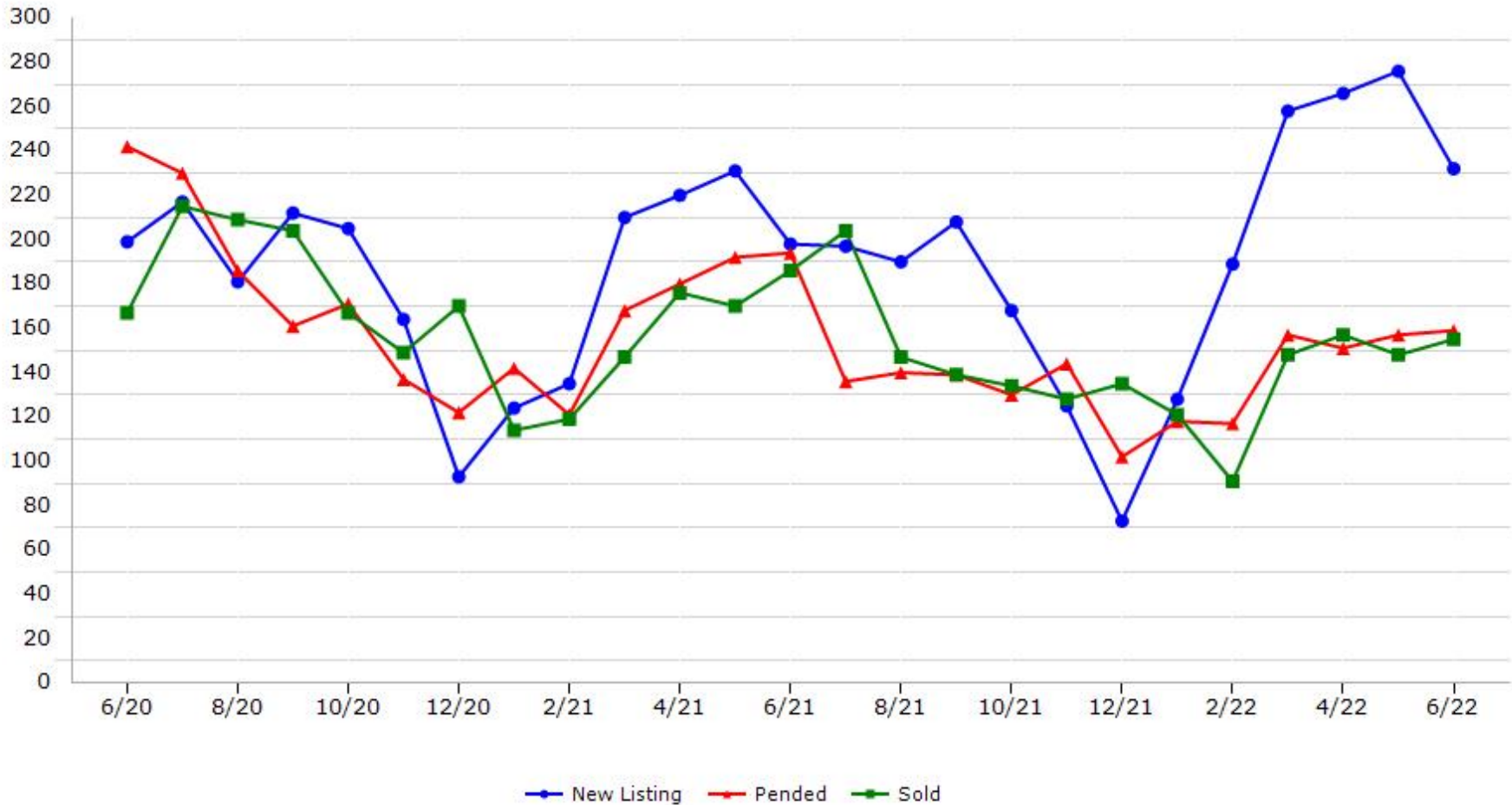
\*Data represents Residential Property class only.

\*Pended represents the number of properties that went into contract during the course of a calendar month.

# Trending Report: Jun 2020 - Jun 2022



## Nevada County



Data provided by **MetroList**® THE TRUE SOURCE Powered by **TrendGraphix** YOUR HOME FOR REAL ESTATE DATA

\*Data represents Residential Property class only.

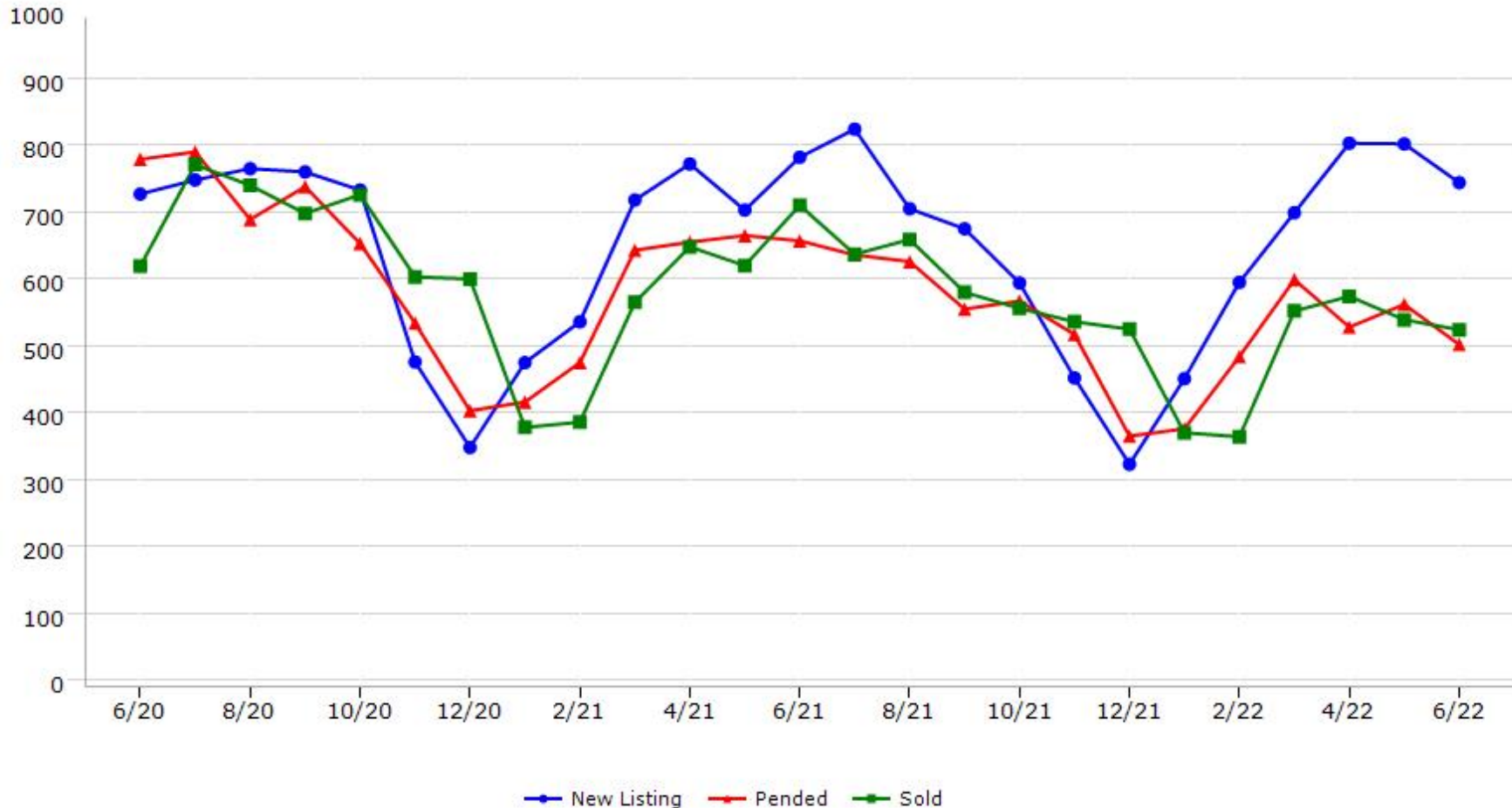
\*Pended represents the number of properties that went into contract during the course of a calendar month.

# Trending Report: Jun 2020 - Jun 2022



CALIFORNIA REAL ESTATE BROKERS, INC.

## Placer County



Data provided by **MetroList**® THE TRUE SOURCE Powered by **TrendGraphix** YOUR HOME FOR REAL ESTATE DATA

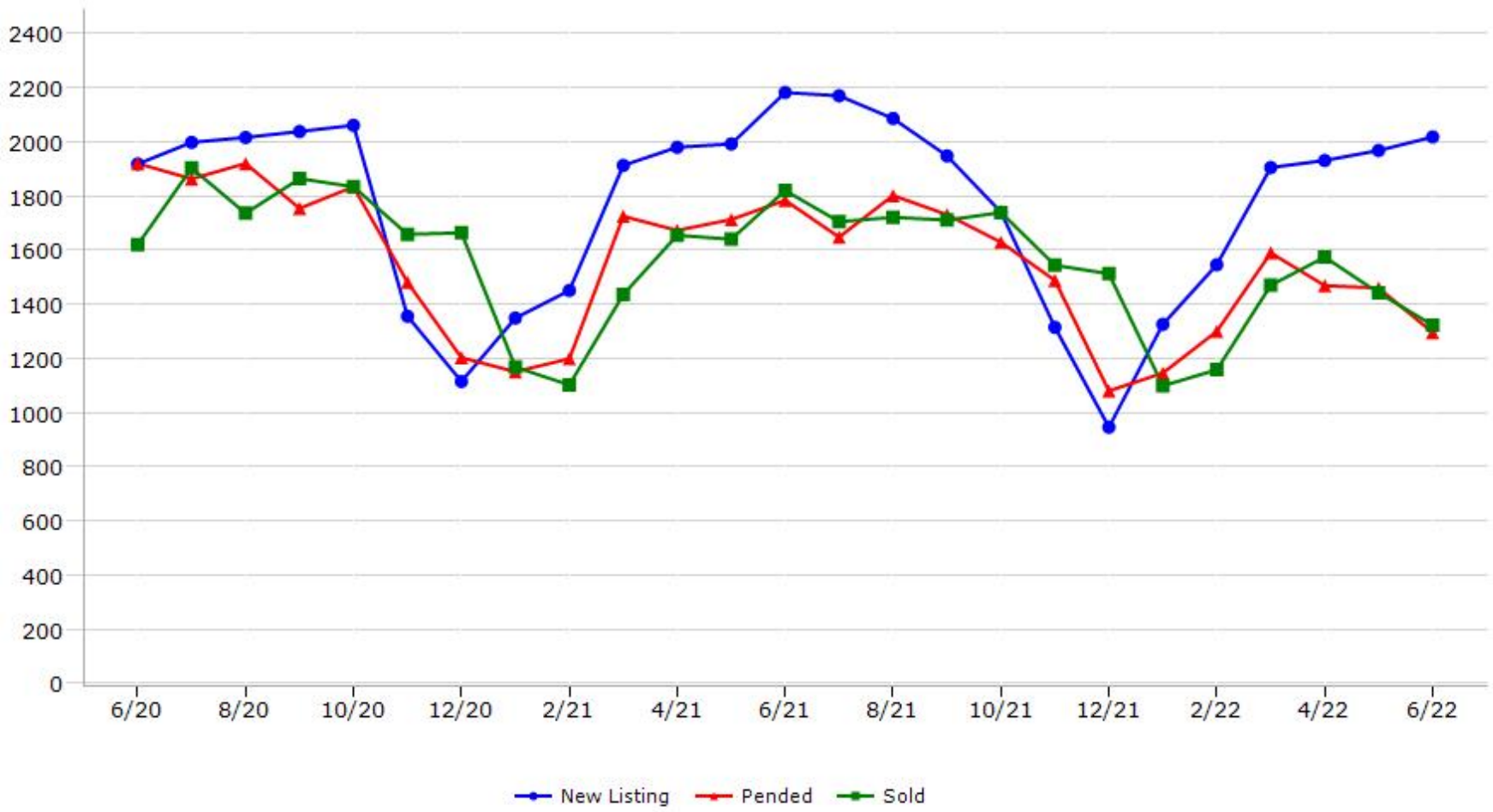
\*Data represents Residential Property class only.

\*Pended represents the number of properties that went into contract during the course of a calendar month.

# Trending Report: Jun 2020 - Jun 2022



## Sacramento County



Data provided by **MetroList** THE TRUE SOURCE Powered by **TrendGraphix** YOUR HOME FOR REAL ESTATE DATA

\*Data represents Residential Property class only.

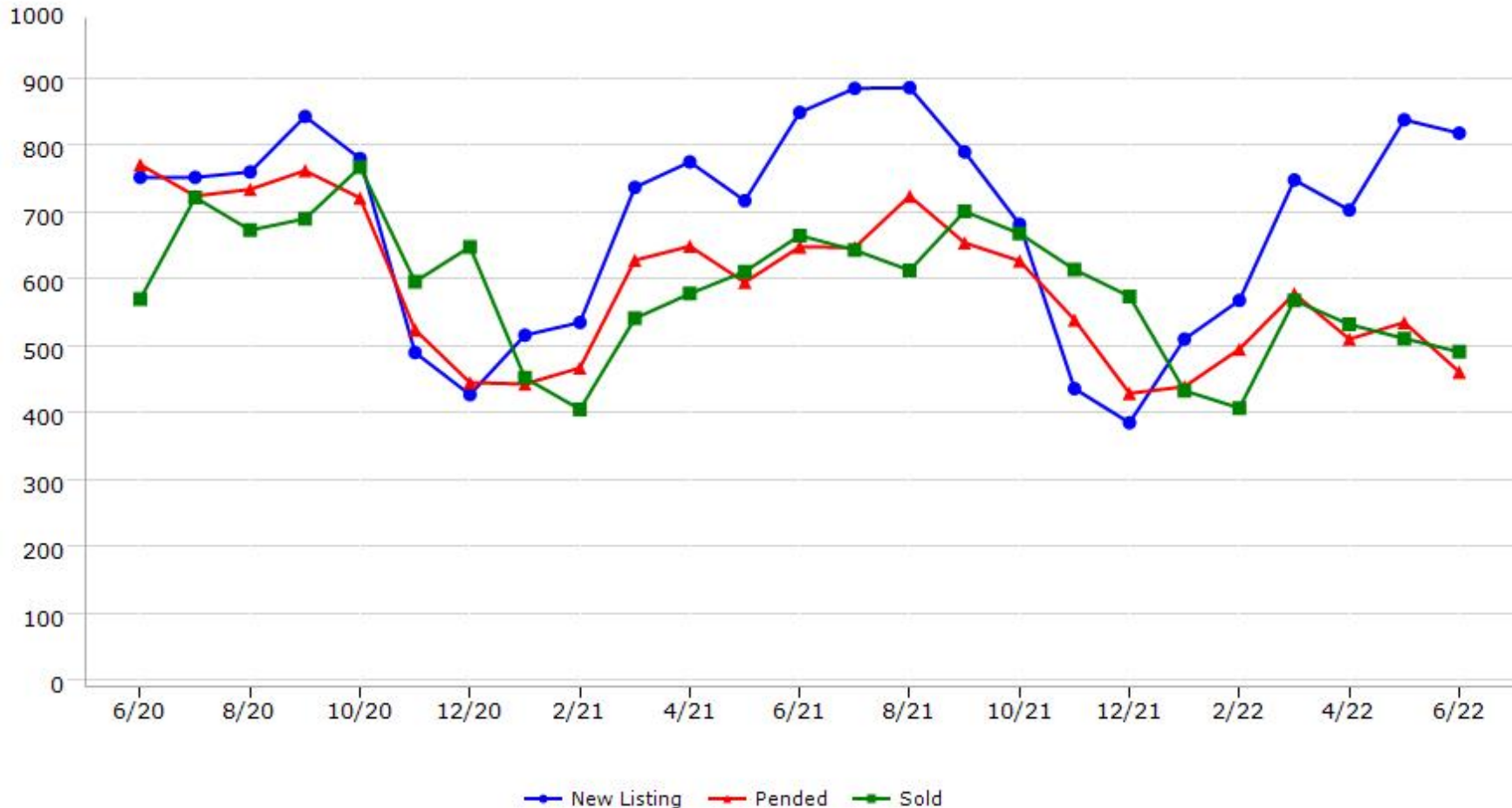
\*Pended represents the number of properties that went into contract during the course of a calendar month.

# Trending Report: Jun 2020 - Jun 2022



CALIFORNIA REAL ESTATE BROKERS, INC.

## San Joaquin County



Data provided by **MetroList**® THE TRUE SOURCE Powered by **TrendGraphix** YOUR HOME FOR REAL ESTATE DATA

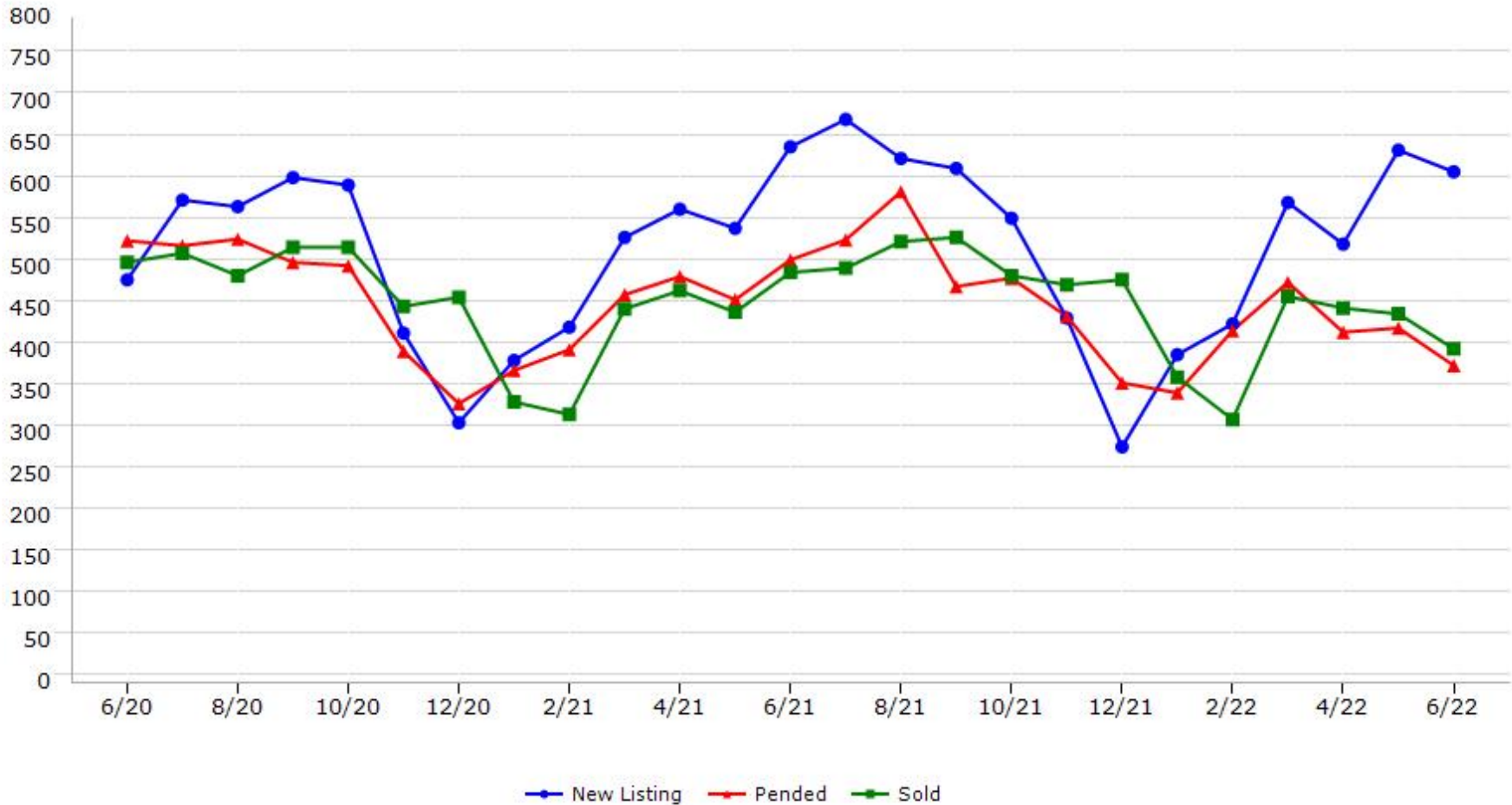
\*Data represents Residential Property class only.

\*Pended represents the number of properties that went into contract during the course of a calendar month.

# Trending Report: Jun 2020 - Jun 2022



## Stanislaus County



Data provided by **MetroList**® THE TRUE SOURCE | Powered by **TrendGraphix** YOUR HOME FOR REAL ESTATE DATA

\*Data represents Residential Property class only.

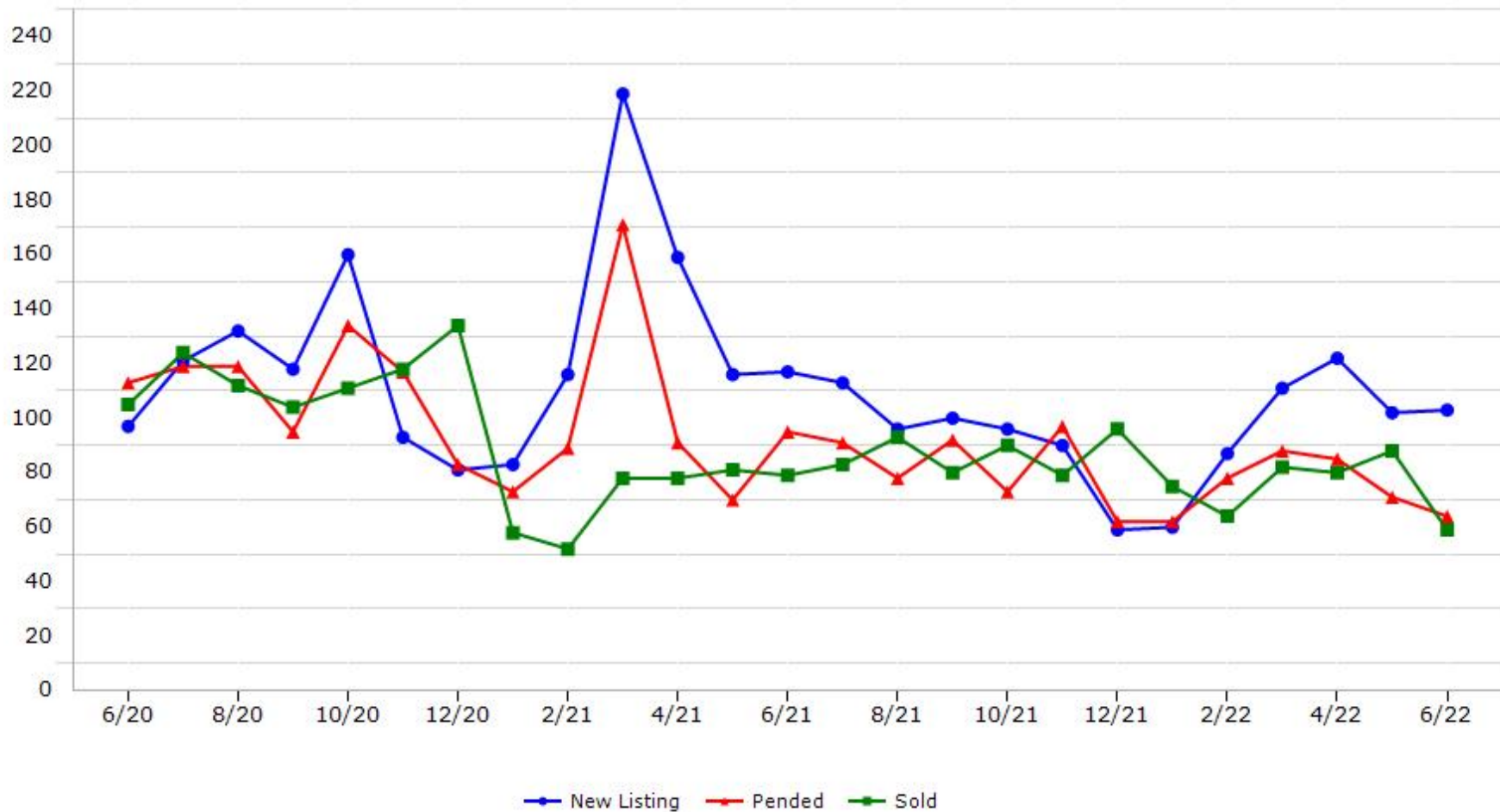
\*Pended represents the number of properties that went into contract during the course of a calendar month.

# Trending Report: Jun 2020 - Jun 2022



CALIFORNIA REAL ESTATE BROKERS, INC.

## Sutter County



Data provided by **MetroList**® THE TRUE SOURCE Powered by **TrendGraphix** YOUR HOME FOR REAL ESTATE DATA

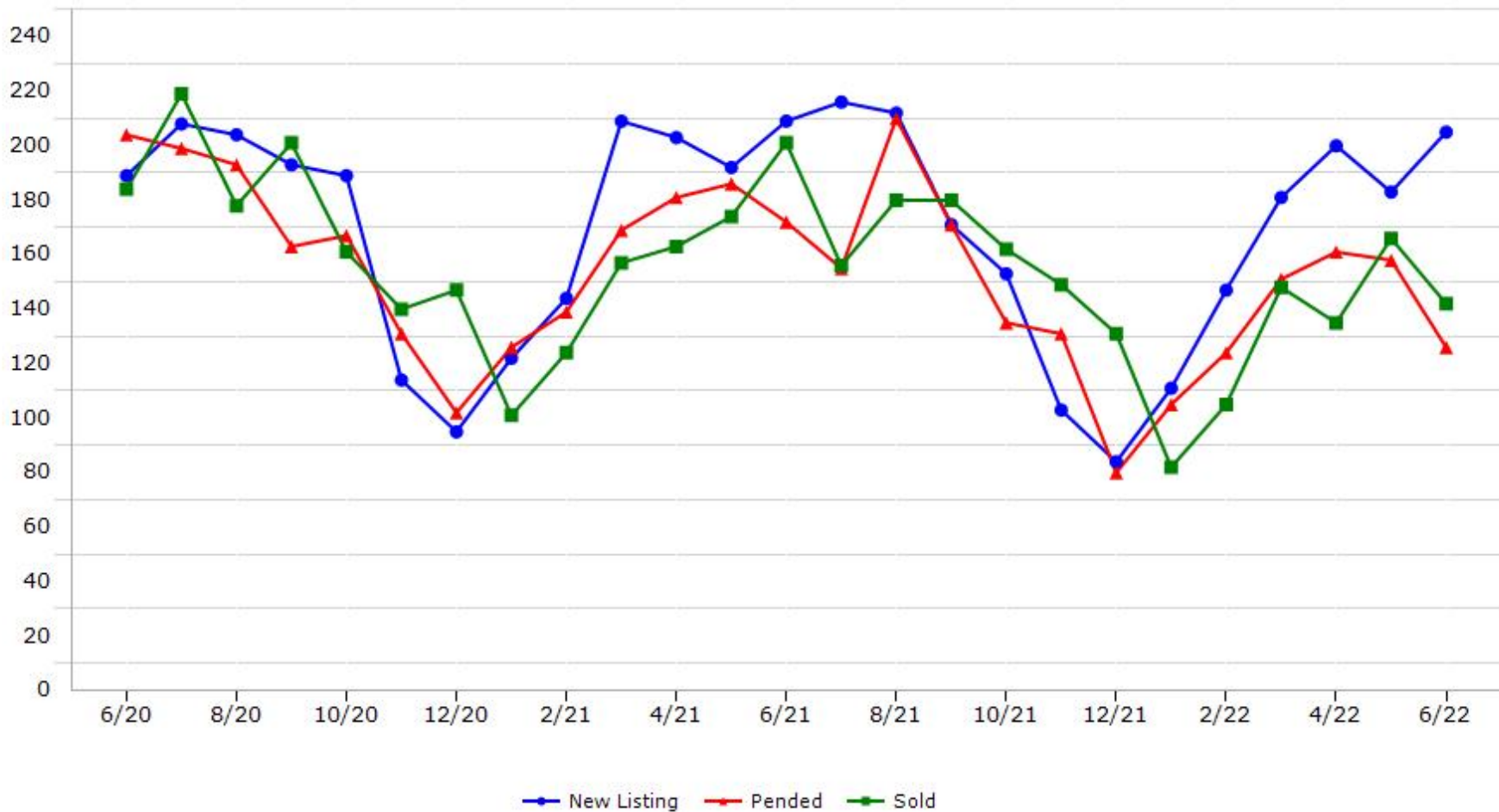
\*Data represents Residential Property class only.

\*Pended represents the number of properties that went into contract during the course of a calendar month.

# Trending Report: Jun 2020 - Jun 2022



## Yolo County



Data provided by **MetroList** THE TRUE SOURCE Powered by **TrendGraphix** YOUR HOME FOR REAL ESTATE DATA

\*Data represents Residential Property class only.

\*Pended represents the number of properties that went into contract during the course of a calendar month.

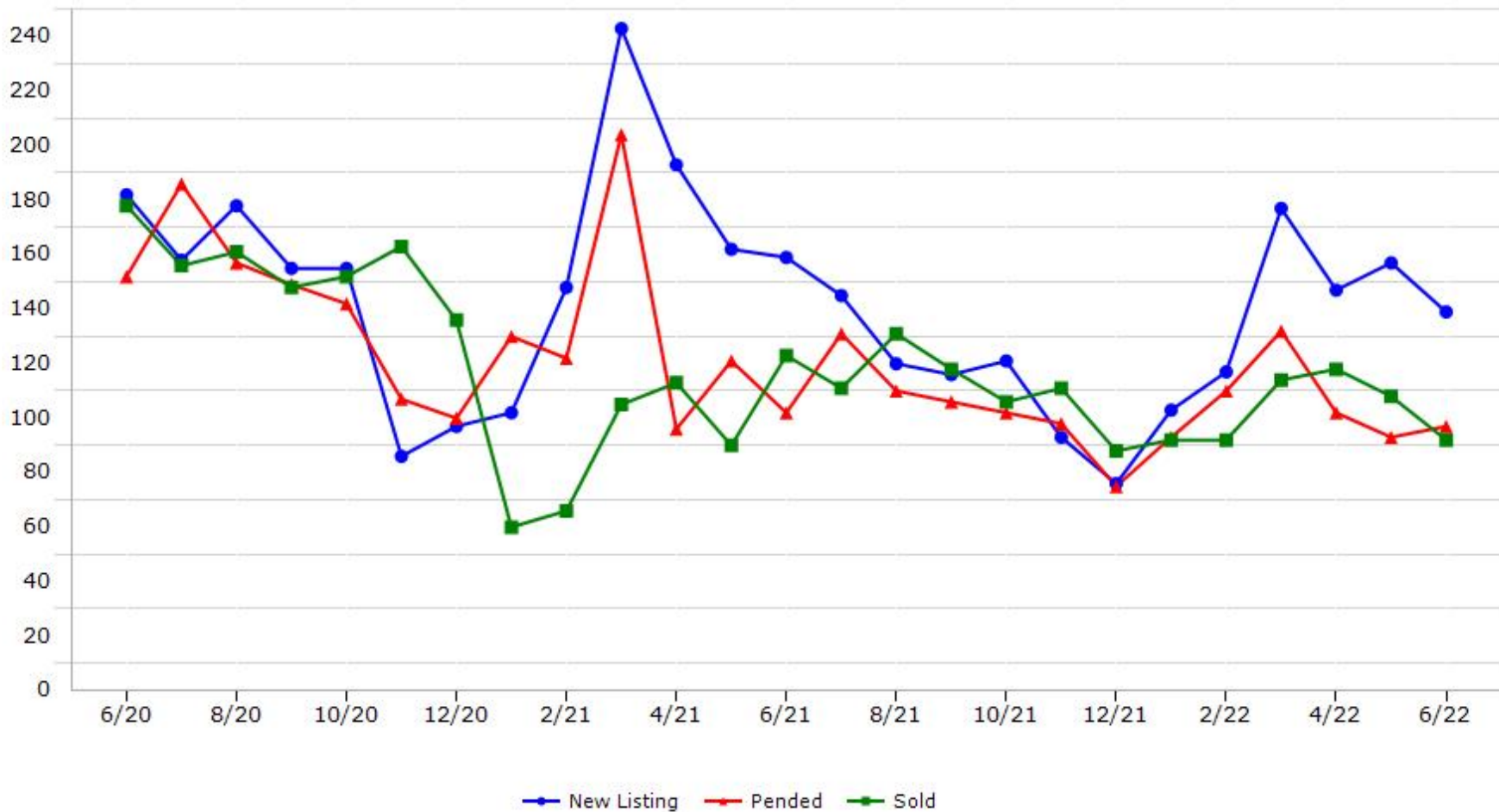


# Trending Report: Jun 2020 - Jun 2022



CALIFORNIA REAL ESTATE BROKERS, INC.

## Yuba County



Data provided by **MetroList**® THE TRUE SOURCE Powered by **TrendGraphix** YOUR HOME FOR REAL ESTATE DATA

\*Data represents Residential Property class only.

\*Pended represents the number of properties that went into contract during the course of a calendar month.